

T27S, R34W, 6th P.M.

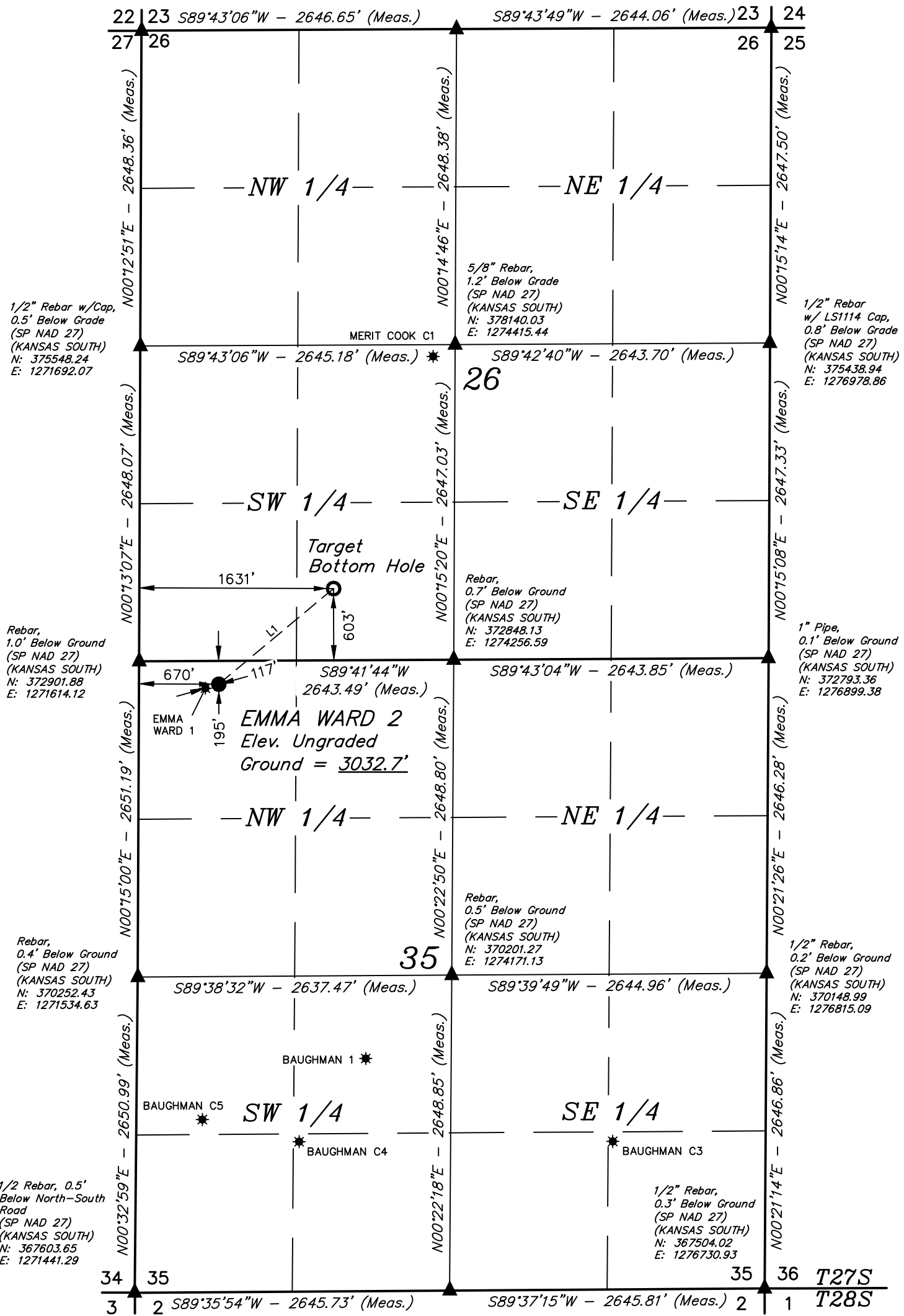
LEGEND:

- = PROPOSED WELLHEAD.
- = TARGET BOTTOM HOLE.
- ▲ = SECTION CORNERS LOCATED.
- * = EXISTING WELLS

Mag Nail & Washer,
at Grade.
(SP NAD 27)
(KANSAS SOUTH)
N: 378194.89
E: 1271769.83

Mag Nail & Washer,
at Grade.
(SP NAD 27)
(KANSAS SOUTH)
N: 378140.03
E: 1274415.44

Mag Nail & Washer,
at Grade.
(SP NAD 27)
(KANSAS SOUTH)
N: 378084.68
E: 1277058.42



1/2" Rebar w/Cap,
0.5' Below Grade
(SP NAD 27)
(KANSAS SOUTH)
N: 375548.24
E: 1271692.07

5/8" Rebar,
1.2' Below Grade
(SP NAD 27)
(KANSAS SOUTH)
N: 378140.03
E: 1274415.44

1/2" Rebar
w/ LS1114 Cap,
0.8' Below Grade
(SP NAD 27)
(KANSAS SOUTH)
N: 375438.94
E: 1276978.86

Rebar,
1.0' Below Ground
(SP NAD 27)
(KANSAS SOUTH)
N: 372901.88
E: 1271614.12

Rebar,
0.7' Below Ground
(SP NAD 27)
(KANSAS SOUTH)
N: 372848.13
E: 1274256.59

1" Pipe,
0.1' Below Ground
(SP NAD 27)
(KANSAS SOUTH)
N: 372793.36
E: 1276899.38

Rebar,
0.4' Below Ground
(SP NAD 27)
(KANSAS SOUTH)
N: 370252.43
E: 1271534.63

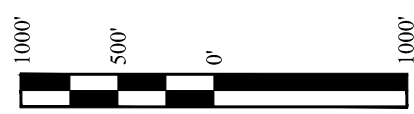
Rebar,
0.5' Below Ground
(SP NAD 27)
(KANSAS SOUTH)
N: 370201.27
E: 1274171.13

1/2" Rebar,
0.2' Below Ground
(SP NAD 27)
(KANSAS SOUTH)
N: 370148.99
E: 1276815.09

1/2" Rebar, 0.5'
Below North-South
Road
(SP NAD 27)
(KANSAS SOUTH)
N: 367603.65
E: 1271441.29

1/2" Rebar,
0.3' Below Ground
(SP NAD 27)
(KANSAS SOUTH)
N: 367504.02
E: 1276730.93

1/2" Rebar,
0.8' Below Ground
(SP NAD 27)
(KANSAS SOUTH)
N: 367554.35
E: 1274086.09



NOTE:
Distances referenced on plat to
section lines are perpendicular.

LINE TABLE		
LINE	DIRECTION	LENGTH
L1	N50°13'52"E	1254.28'

NAD 83 (SURFACE LOCATION)	NAD 83 (TARGET BOTTOM HOLE)
LATITUDE = 37°39'47.90" (37.663306)	LATITUDE = 37°39'55.84" (37.665512)
LONGITUDE = 101°00'53.11" (101.014752)	LONGITUDE = 101°00'41.13" (101.011426)
NAD 27 (SURFACE LOCATION)	NAD 27 (TARGET BOTTOM HOLE)
LATITUDE = 37°39'47.82" (37.663282)	LATITUDE = 37°39'55.76" (37.665489)
LONGITUDE = 101°00'51.50" (101.014306)	LONGITUDE = 101°00'39.53" (101.010980)
STATE PLANE NAD 83 (KANSAS SOUTH)	STATE PLANE NAD 83 (KANSAS SOUTH)
N: 1685047.45 E: 584500.22	N: 1685824.67 E: 585484.36
STATE PLANE NAD 27 (KANSAS SOUTH)	STATE PLANE NAD 27 (KANSAS SOUTH)
N: 372693.80 E: 1272277.85	N: 373471.00 E: 1273262.00

CERTIFICATE
THIS IS TO CERTIFY THAT THE ABOVE PLAT WAS PREPARED FROM FIELD NOTES OF ACTUAL SURVEYS MADE BY ME OR UNDER MY SUPERVISION AND THAT THE SAME ARE TRUE AND CORRECT TO THE BEST OF MY KNOWLEDGE AND BELIEF.

Justin Marc
REGISTERED LAND SURVEYOR
REGISTRATION NO. 18349
STATE OF KANSAS
2-19

REV: 1 03-12-19 S.C.S. (BOTTOM HOLE CHANGE)

BASIS OF BEARINGS
BASIS OF BEARINGS IS A G.P.S. OBSERVATION

BASIS OF ELEVATION

THE BASIS OF ELEVATION, ELEV: 2943.84' WAS DERIVED FROM AN OPUS SOLUTION AT LAT: 37°33'17.64" LONG: 100°53'21.35" AND HAS A DATUM OF NAVD88.



UELS, LLC
Corporate Office * 85 South 200 East
Vernal, UT 84078 * (435) 789-1017



MERIT ENERGY COMPANY

EMMA WARD 2
195' FNL 670' FWL
NW 1/4 NW 1/4, SECTION 35, T27S, R34W, 6th P.M.
HASKELL COUNTY, KANSAS

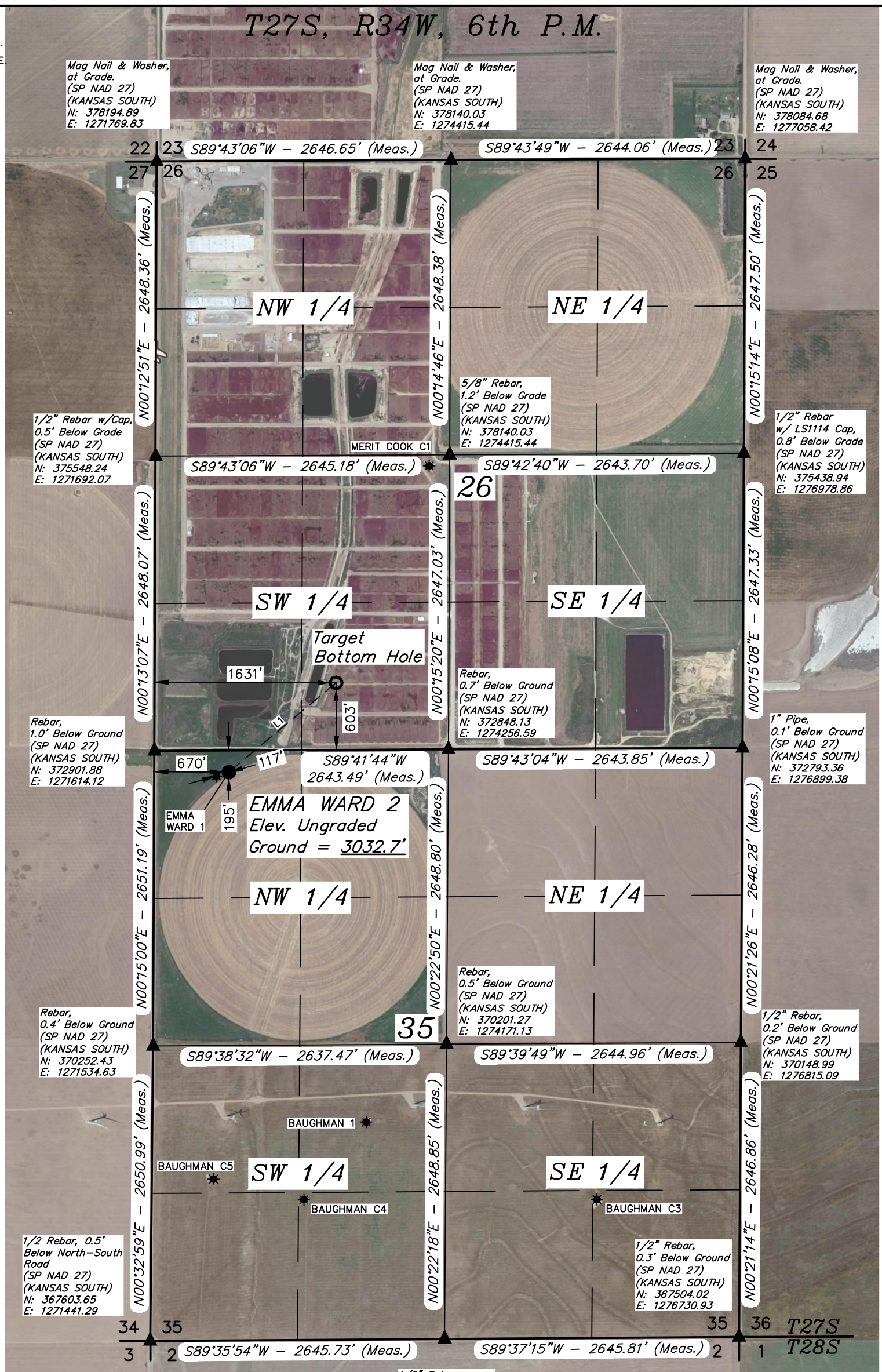
SURVEYED BY	B.L.	03-04-19	SCALE
DRAWN BY	S.C.S.	03-05-19	1" = 1000'

WELL LOCATION PLAT

LEGEND:

- = PROPOSED WELLHEAD.
- = TARGET BOTTOM HOLE.
- ▲ = SECTION CORNERS LOCATED.
- ★ = EXISTING WELLS

T27S, R34W, 6th P.M.



Mag Nail & Washer,
at Grade.
(SP NAD 27)
(KANSAS SOUTH)
N: 378194.89
E: 1271769.83

Mag Nail & Washer,
at Grade.
(SP NAD 27)
(KANSAS SOUTH)
N: 378140.03
E: 1274415.44

Mag Nail & Washer,
at Grade.
(SP NAD 27)
(KANSAS SOUTH)
N: 378084.68
E: 1277058.42

1/2" Rebar w/Cap,
0.5' Below Grade
(SP NAD 27)
(KANSAS SOUTH)
N: 375548.24
E: 1271692.07

5/8" Rebar,
1.2' Below Grade
(SP NAD 27)
(KANSAS SOUTH)
N: 378140.03
E: 1274415.44

1/2" Rebar
w/ LS1114 Cap,
0.8' Below Grade
(SP NAD 27)
(KANSAS SOUTH)
N: 375438.94
E: 1276978.86

Rebar,
1.0' Below Ground
(SP NAD 27)
(KANSAS SOUTH)
N: 372901.88
E: 1271614.12

Rebar,
0.7' Below Ground
(SP NAD 27)
(KANSAS SOUTH)
N: 372848.13
E: 1274256.59

1" Pipe,
0.1' Below Ground
(SP NAD 27)
(KANSAS SOUTH)
N: 372793.36
E: 1276899.38

Rebar,
0.4' Below Ground
(SP NAD 27)
(KANSAS SOUTH)
N: 370252.43
E: 1271534.63

Rebar,
0.5' Below Ground
(SP NAD 27)
(KANSAS SOUTH)
N: 370201.27
E: 1274171.13

1/2" Rebar,
0.2' Below Ground
(SP NAD 27)
(KANSAS SOUTH)
N: 370148.99
E: 1276815.09

1/2" Rebar, 0.5'
Below North-South
Road
(SP NAD 27)
(KANSAS SOUTH)
N: 367603.65
E: 1271441.29

1/2" Rebar,
0.3' Below Ground
(SP NAD 27)
(KANSAS SOUTH)
N: 367504.02
E: 1276730.93

1/2" Rebar,
0.8' Below Ground
(SP NAD 27)
(KANSAS SOUTH)
N: 367554.35
E: 1274086.09

NOTE:
Distances referenced on plat to
section lines are perpendicular.

LINE TABLE		
LINE	DIRECTION	LENGTH
L1	N50°13'52"E	1254.28'

NAD 83 (SURFACE LOCATION)	NAD 83 (TARGET BOTTOM HOLE)
LATITUDE = 37°39'47.90" (37.663306)	LATITUDE = 37°39'55.84" (37.665512)
LONGITUDE = 101°00'53.11" (101.014752)	LONGITUDE = 101°00'41.13" (101.011426)
NAD 27 (SURFACE LOCATION)	NAD 27 (TARGET BOTTOM HOLE)
LATITUDE = 37°39'47.82" (37.663282)	LATITUDE = 37°39'55.76" (37.665489)
LONGITUDE = 101°00'51.50" (101.014306)	LONGITUDE = 101°00'39.53" (101.010980)
STATE PLANE NAD 83 (KANSAS SOUTH)	STATE PLANE NAD 83 (KANSAS SOUTH)
N: 1685047.45 E: 584500.22	N: 1685824.67 E: 585484.36
STATE PLANE NAD 27 (KANSAS SOUTH)	STATE PLANE NAD 27 (KANSAS SOUTH)
N: 372693.80 E: 1272277.85	N: 373471.00 E: 1273262.00

CERTIFICATE
THIS IS TO CERTIFY THAT THE ABOVE PLAT WAS PREPARED FROM FIELD NOTES OF ACTUAL SURVEYS MADE BY ME OR UNDER MY SUPERVISION AND THAT THE SAME ARE TRUE AND CORRECT TO THE BEST OF MY KNOWLEDGE AND BELIEF.

JUSTIN M. MARCO
REGISTERED LAND SURVEYOR
REGISTRATION NO. 18349
STATE OF KANSAS
12-19



REV: 1 03-12-19 S.C.S. (BOTTOM HOLE CHANGE)

BASIS OF BEARINGS
BASIS OF BEARINGS IS A G.P.S. OBSERVATION

BASIS OF ELEVATION
THE BASIS OF ELEVATION, ELEV: 2943.84' WAS DERIVED FROM AN OPUS SOLUTION AT LAT: 37°33'17.64" LONG: 100°53'21.35" AND HAS A DATUM OF NAVD88.

UELS, LLC
Corporate Office * 85 South 200 East
Vernal, UT 84078 * (435) 789-1017



MERIT ENERGY COMPANY
EMMA WARD 2
195' FNL 670' FWL
NW 1/4 NW 1/4, SECTION 35, T27S, R34W, 6th P.M.
HASKELL COUNTY, KANSAS

SURVEYED BY	B.L.	03-04-19	SCALE
DRAWN BY	S.C.S.	03-05-19	1" = 1000'

WELL LOCATION PLAT

BEGINNING AT THE INTERSECTION OF HIGHWAY 56 AND INMAN STREET IN SUBLETTE, KANSAS PROCEED IN A SOUTHWESTERLY DIRECTION ALONG HIGHWAY 56 APPROXIMATELY 1.6 MILES TO THE JUNCTION OF THIS ROAD AND US-83 TO THE NORTH; TURN RIGHT AND PROCEED IN A NORTHERLY DIRECTION APPROXIMATELY 6.0 MILES TO THE JUNCTION OF THIS ROAD AND US-160 TO THE WEST; TURN LEFT AND PROCEED IN A WESTERLY DIRECTION APPROXIMATELY 8.0 MILES TO THE JUNCTION OF THIS ROAD AND COUNTY ROAD EE TO THE NORTH; TURN RIGHT AND PROCEED IN A NORTHERLY DIRECTION APPROXIMATELY 7.0 MILES TO THE JUNCTION OF THIS ROAD AND AN COUNTY ROAD 60 TO THE EAST; TURN RIGHT AND PROCEED IN AN EASTERLY DIRECTION APPROXIMATELY 0.1 MILES. FROM THIS POINT, THE PROPOSED WELL LOCATION IS APPROXIMATELY 228' SOUTHERLY.

TOTAL DISTANCE FROM SUBLETTE, KANSAS TO THE PROPOSED WELL LOCATION IS APPROXIMATELY 22.7 MILES.

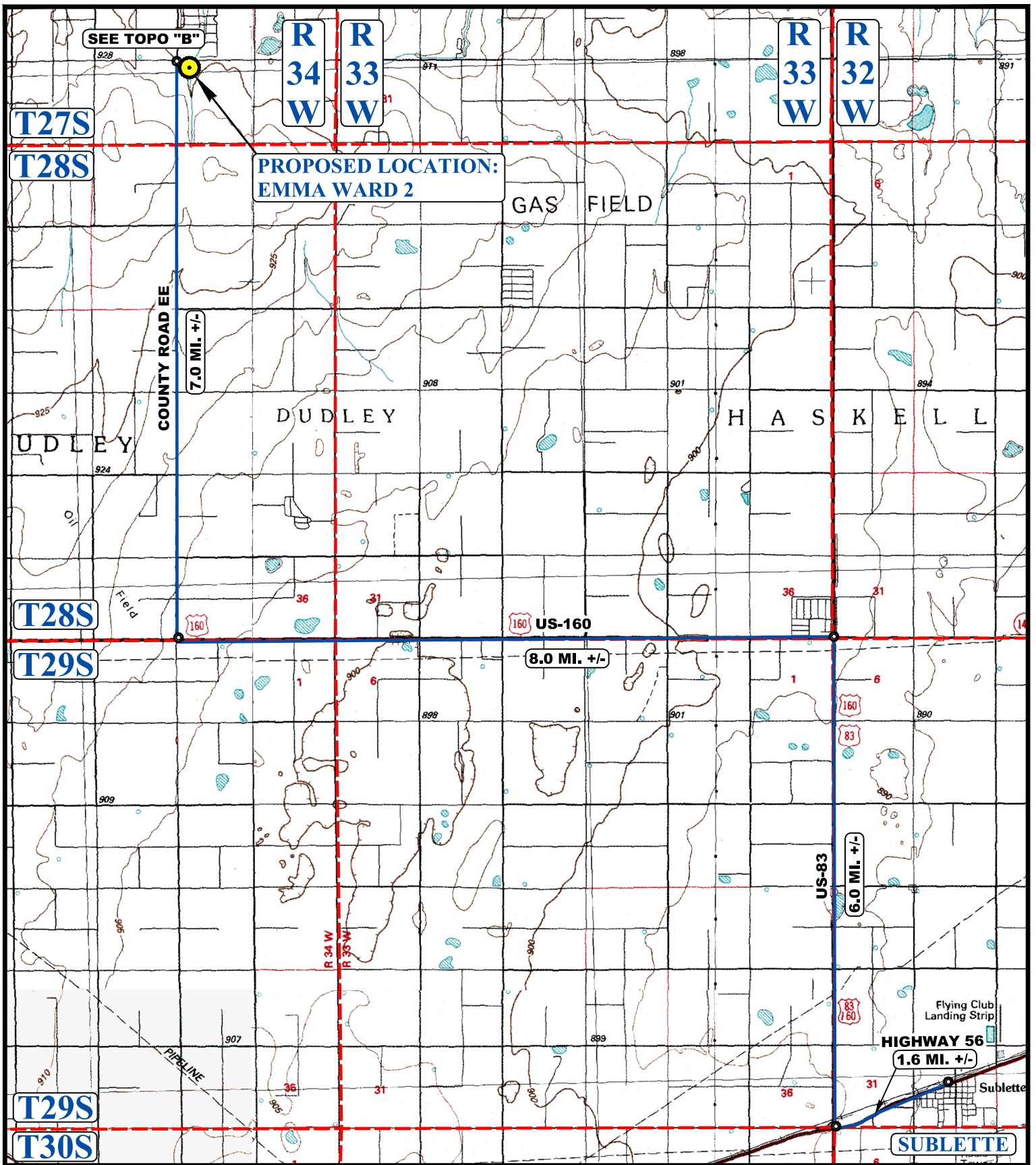
MERIT ENERGY COMPANY

**EMMA WARD 2
195' FNL 670' FWL
NW 1/4 NW 1/4, SECTION 35, T27S, R34W, 6th P.M.
HASKELL COUNTY, KANSAS**

SURVEYED BY	B.L.	03-04-19	
DRAWN BY	S.C.S.	03-05-19	
ROAD DESCRIPTION			



UELS, LLC
Corporate Office * 85 South 200 East
Vernal, UT 84078 * (435) 789-1017



SEE TOPO "B"

**PROPOSED LOCATION:
EMMA WARD 2**

GAS FIELD

DUDLEY

HASKELL

US-160

US-83

HIGHWAY 56

SUBLETTE

LEGEND:

 PROPOSED LOCATION



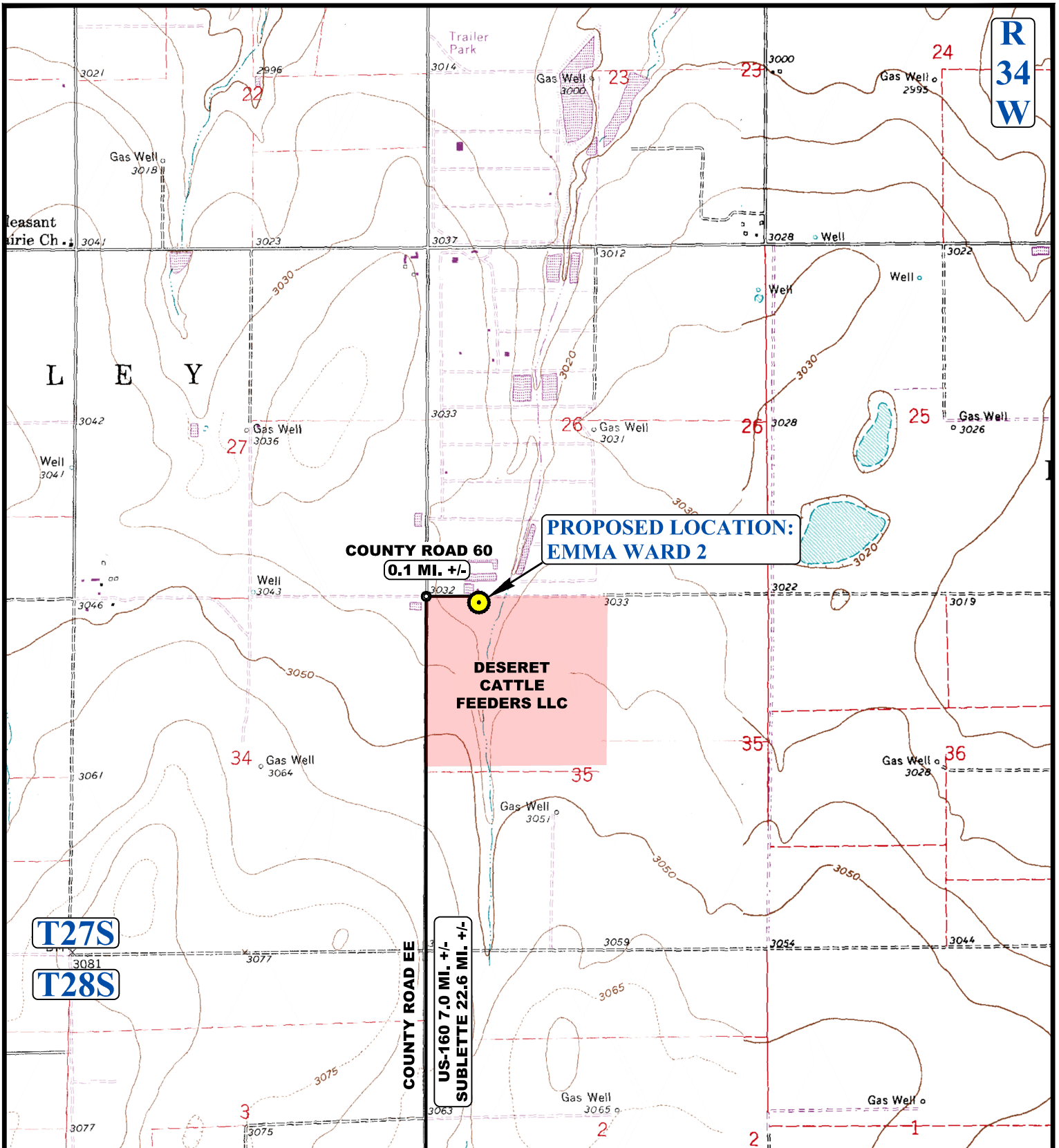
MERIT ENERGY COMPANY

EMMA WARD 2
 195' FNL 670' FWL
 NW 1/4 NW 1/4, SECTION 35, T27S, R34W, 6th P.M.
 HASKELL COUNTY, KANSAS



UELS, LLC
 Corporate Office * 85 South 200 East
 Vernal, UT 84078 * (435) 789-1017

SURVEYED BY	B.L.	03-04-19	SCALE
DRAWN BY	S.C.S.	03-05-19	1 : 100,000
ACCESS ROAD MAP			TOPO A



NOTE: PARCEL DATA SHOWN HAS BEEN OBTAINED FROM VARIOUS SOURCES AND SHOULD BE USED FOR MAPPING, GRAPHIC AND PLANNING PURPOSES ONLY. NO WARRANTY IS MADE BY UINTAH ENGINEERING AND LAND SURVEYING (UELS) FOR ACCURACY OF THE PARCEL DATA.

LEGEND:

— EXISTING ROAD



MERIT ENERGY COMPANY

EMMA WARD 2
 195' FNL 670' FWL
 NW 1/4 NW 1/4, SECTION 35, T27S, R34W, 6th P.M.
 HASKELL COUNTY, KANSAS

SURVEYED BY	B.L.	03-04-19	SCALE
DRAWN BY	S.C.S.	03-05-19	1 : 24,000
ACCESS ROAD MAP			TOPO B



UELS, LLC
 Corporate Office * 85 South 200 East
 Vernal, UT 84078 * (435) 789-1017