



Fall & Associates
 Stake and Elevation Service
 P.O. Box 222
 Pretty Prairie, KS. 67570
 785-243-7506

Date 4-5-19

Invoice Number 0404191

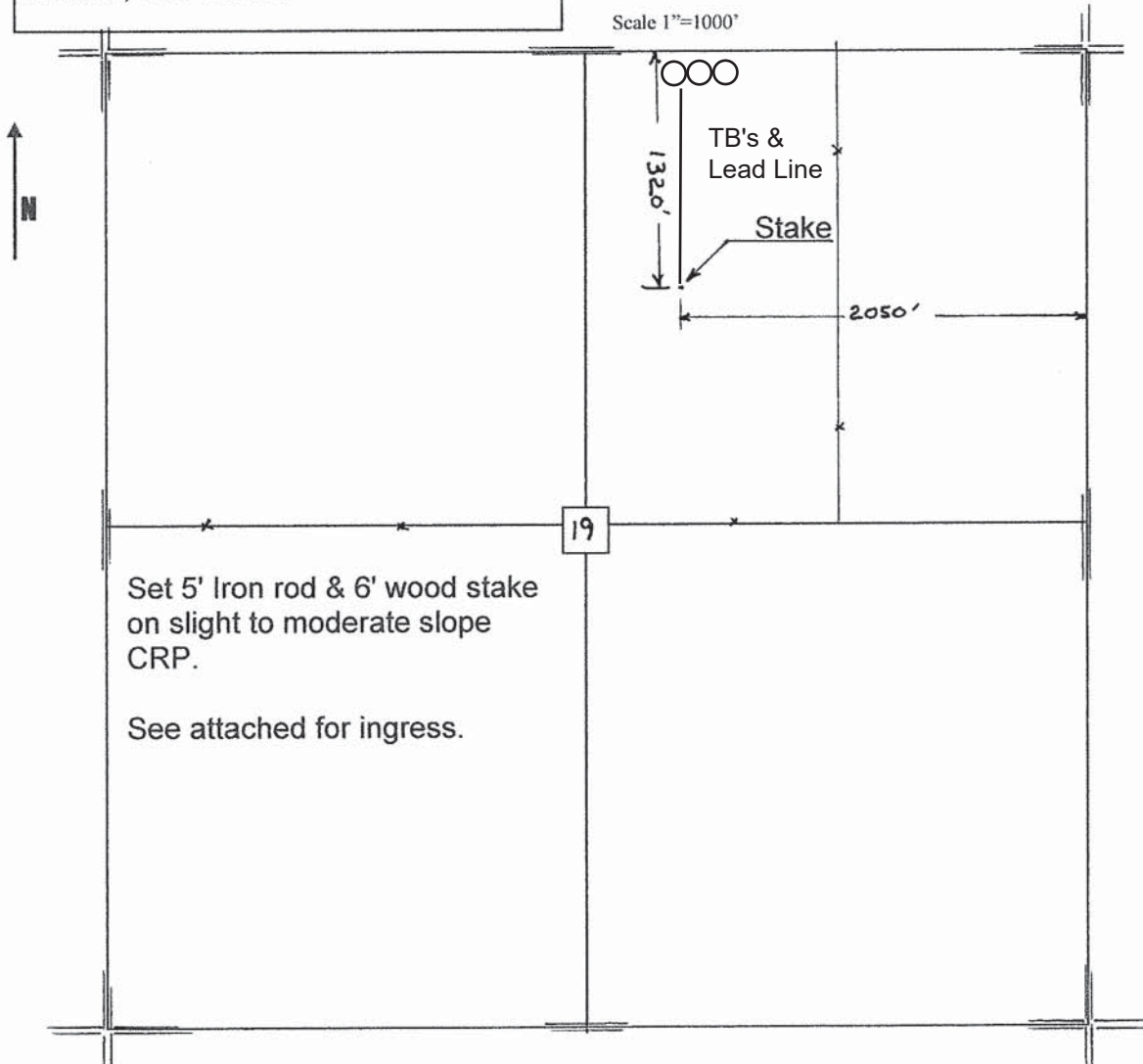
<u>MURFIN DRILLING</u>	<u>1-19</u>	<u>Stahl</u>
Operator	Number	Farm Name
<u>Rooks-KS</u>	<u>19</u> <u>9s</u> <u>19w</u>	<u>1320'FNL 2050'FEL</u>
County-State	S T R	Location

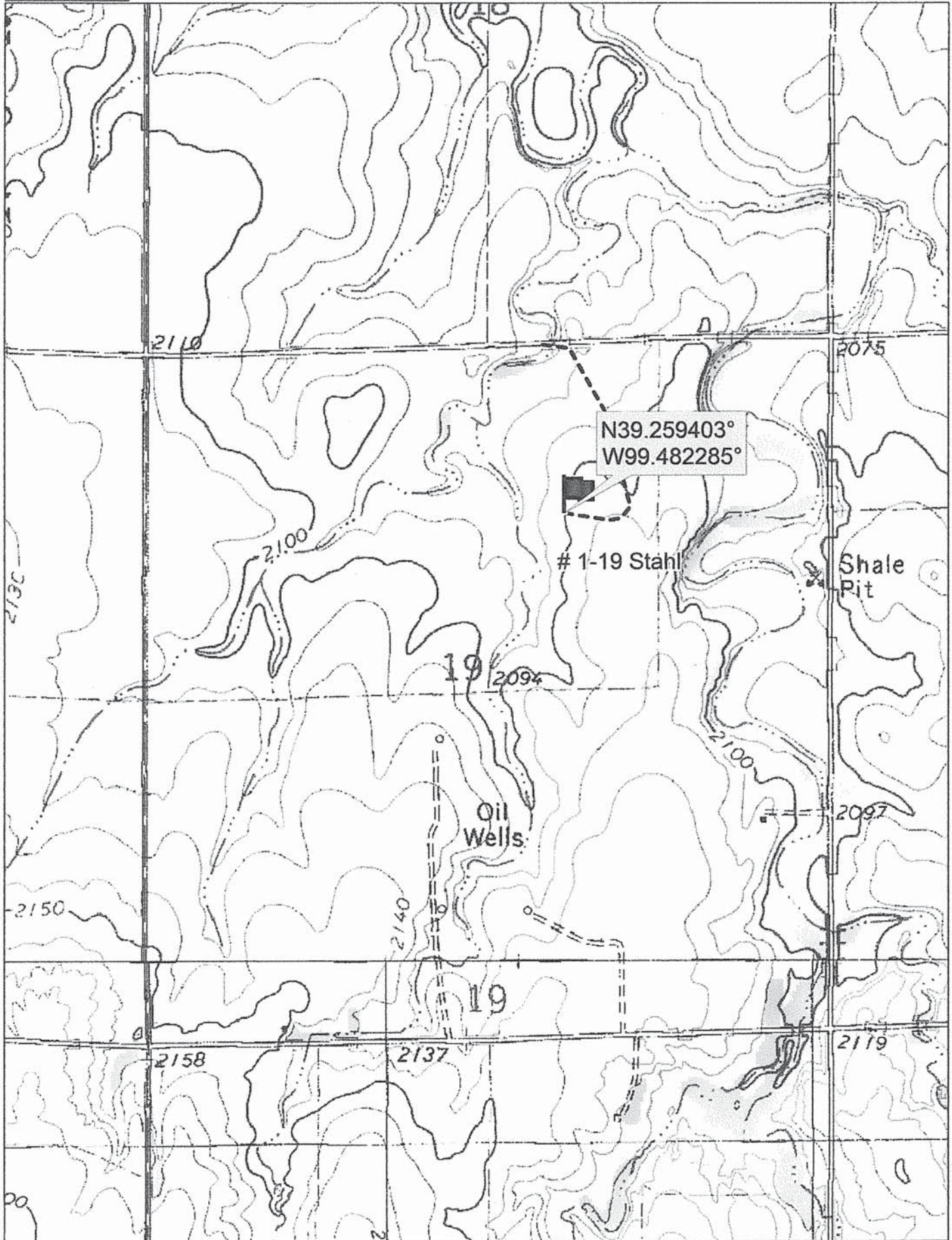
Murfin Drilling
 250 N. Water
 Suite 300
 Wichita, KS. 67202

Elevation 2101 Gr.

Ordered By: Shauna

Scale 1"=1000'





Data use subject to license.

© DeLorme. Topo North America™ 9.

www.delorme.com

