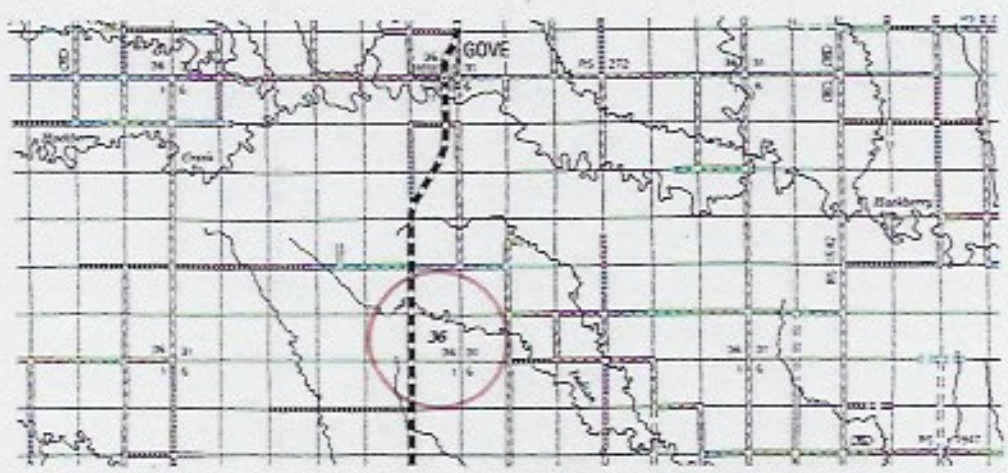
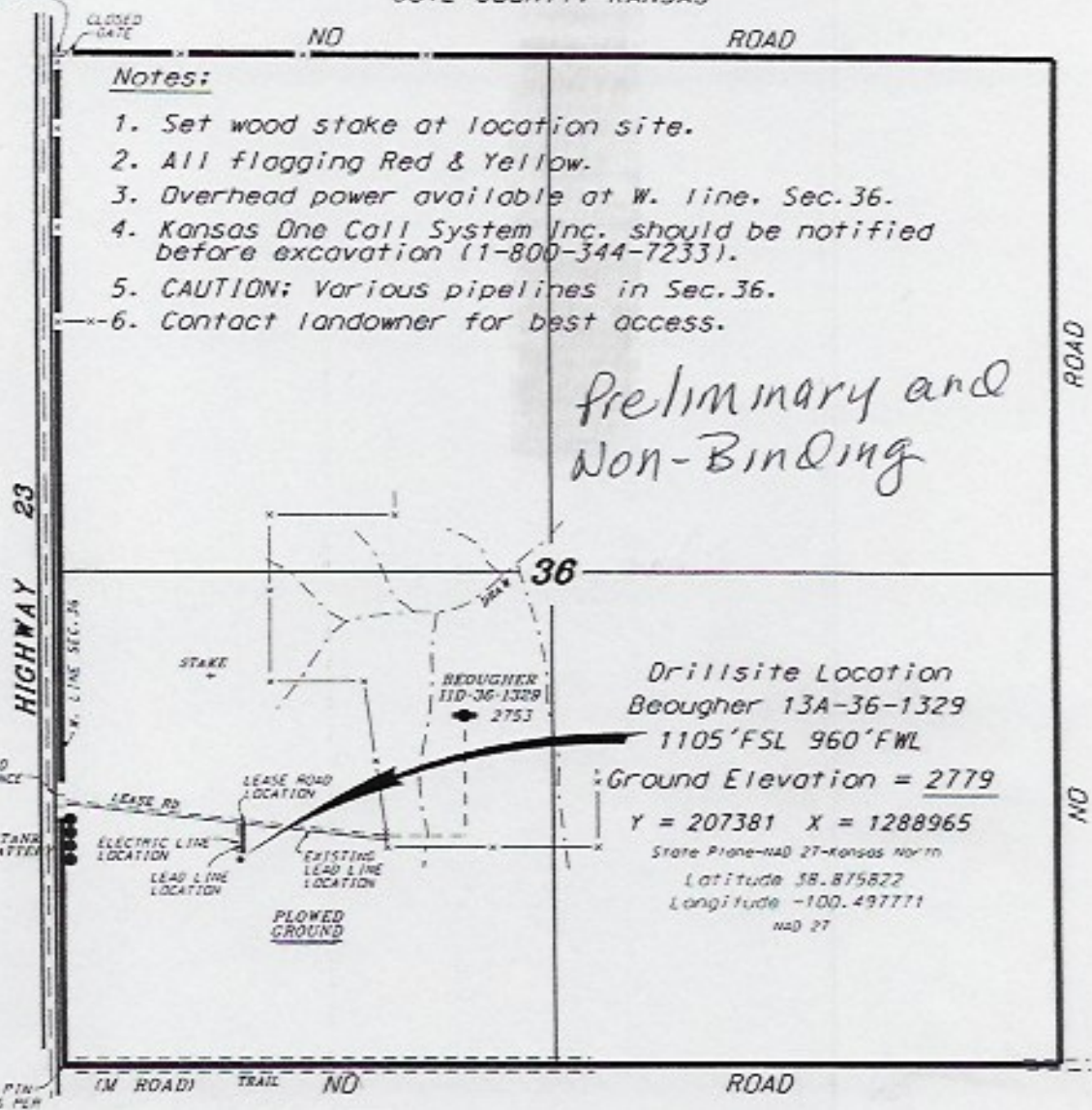


**US OIL RESOURCES, LLC
 BEOUGHIER LEASE
 SW. 1/4, SECTION 36, T13S, R29W
 GOVE COUNTY, KANSAS**

FOUND CAPPED IRON PIN
 AT NW COR. SEC. 36 PER
 K.D.O.T. REFERENCES
 Y = 211567 X = 1288155

*Ingress and egress to location as shown on this
 plot is for public use only and may not be legally
 obtained for public use. Contact landowner,
 tenant and county road department for access.

FOUND CAPPED IRON PIN
 AT SW COR. SEC. 36 PER
 K.D.O.T. REFERENCES
 120.5' E. OF CENTER LINE
 HIGHWAY 23
 Y = 207381 X = 1287965



• Contouring data is based upon the best maps and photographs available to us and upon a regular section of land containing 640 acres.
 • Approximate section lines were determined using the normal standard of care of drilled surveys and/or in the state of Kansas. The section corners, which establish the precise section lines, were not necessarily located, and the exact location of the drillsite location in the section is not guaranteed. Therefore, the operator securing this service and accepting this plot and all other services relating thereto agree to hold Central Kansas Oilfield Services, Inc., its officers and employees harmless from all claims, costs and expenses and civil liabilities (including any liability from negligence or consequential damage).
 • Elevations derived from National Geodetic Vertical Datum.

Date April 9, 2019

CENTRAL KANSAS OILFIELD SERVICES, INC. (620)792-1977