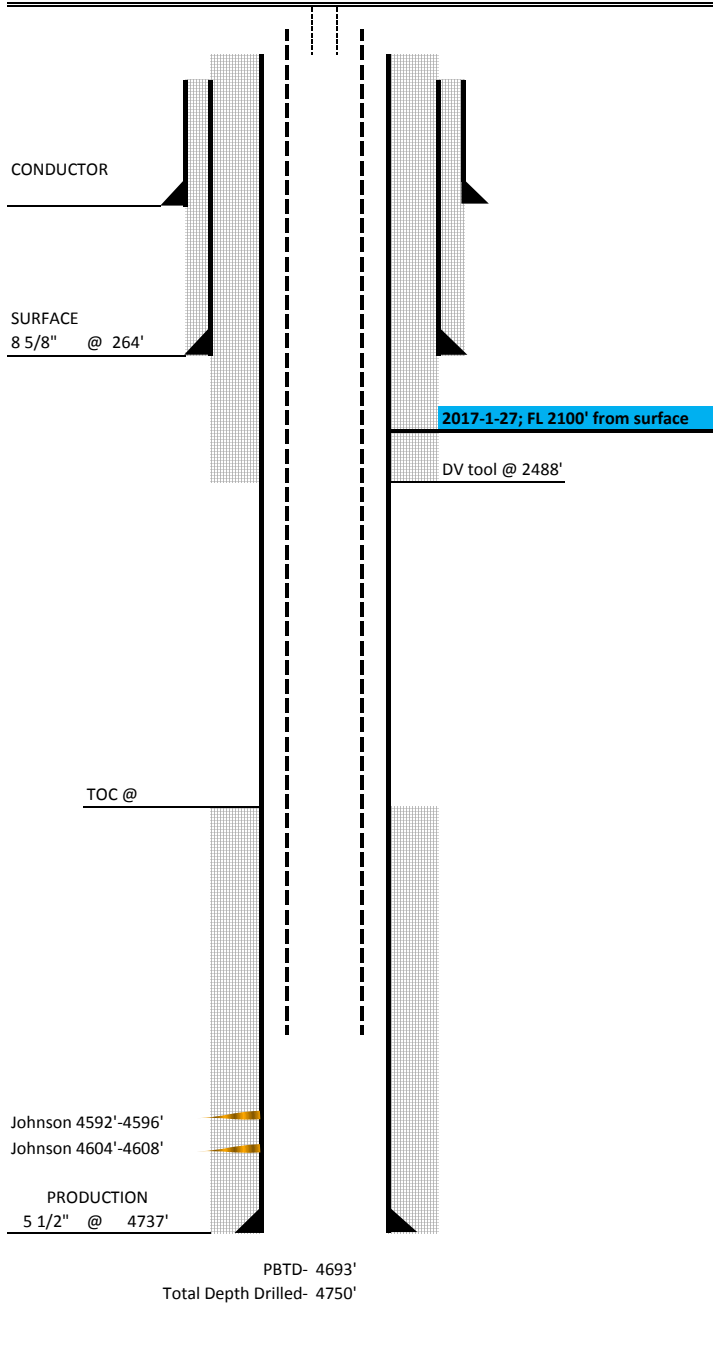


Well Name: **Denny #2**
 State: KS
 County: Logan
 Field:
 API: 15-109-21-195
 Location: 655' FNL & 415' FWL
 Operator: **NGO**

Elevations	
RKB	3021'
DF	
GL	3012'

Directional Data		
KOP		RKB
Max DEV	o	RKB
Max Dogleg	o	RKB
Dev @ Perfs	o	RKB
Return to Vertical		RKB

Last Update: 1/30/2017
 Schematic AS OF Date: 6/10/2014
 Spud: 7/9/2013
 TD: 7/19/2013
 Completion: 7/20/2013



CASING / CEMENT									
INTERVAL	HOLE	CSG	WT.	GR.	Depth Top	Depth Btm	LENGTH	CMT	TOC
COND.	-	-	-	-					
SURF.	12.25"	8 5/8"	24#	API		264'		200 sx	
Production	7.875"	5 1/2"	15.5#			4737'		Top 400sx Bottom 175	
DV Tool									
Tbg									
SN									
Rods									

Perf Data							
Stage #	Formation	Top Perf	Btm Perf	Length	Net ft	SPF	Total Holes
1	Johnson	4,592'	4,596'	4'	4'	6	24
2	Johnson	4,604'	4,608'	4'	4'	6	24

Stimulation Data												
Stage #	Water	Proppant					Acid	Avg R	Max R	Avg P	ISIP	FG

