

ROCK TYPES



ACCESSORIES

MINERAL

△ Chert White

FOSSIL

○ Oolite
⊕ Oomoldic

STRINGER

~ Chert
▨ Dolomite
▨ Limestone
••• Sandstone
••• Siltstone

TEXTURE

C Chalky

OTHER SYMBOLS

MISC

DR Daily Report
Digital Photo
Document
Folder
Link
Vertical Log File
Horizontal Log File
Core Log File
Drill Cuttings Rpt

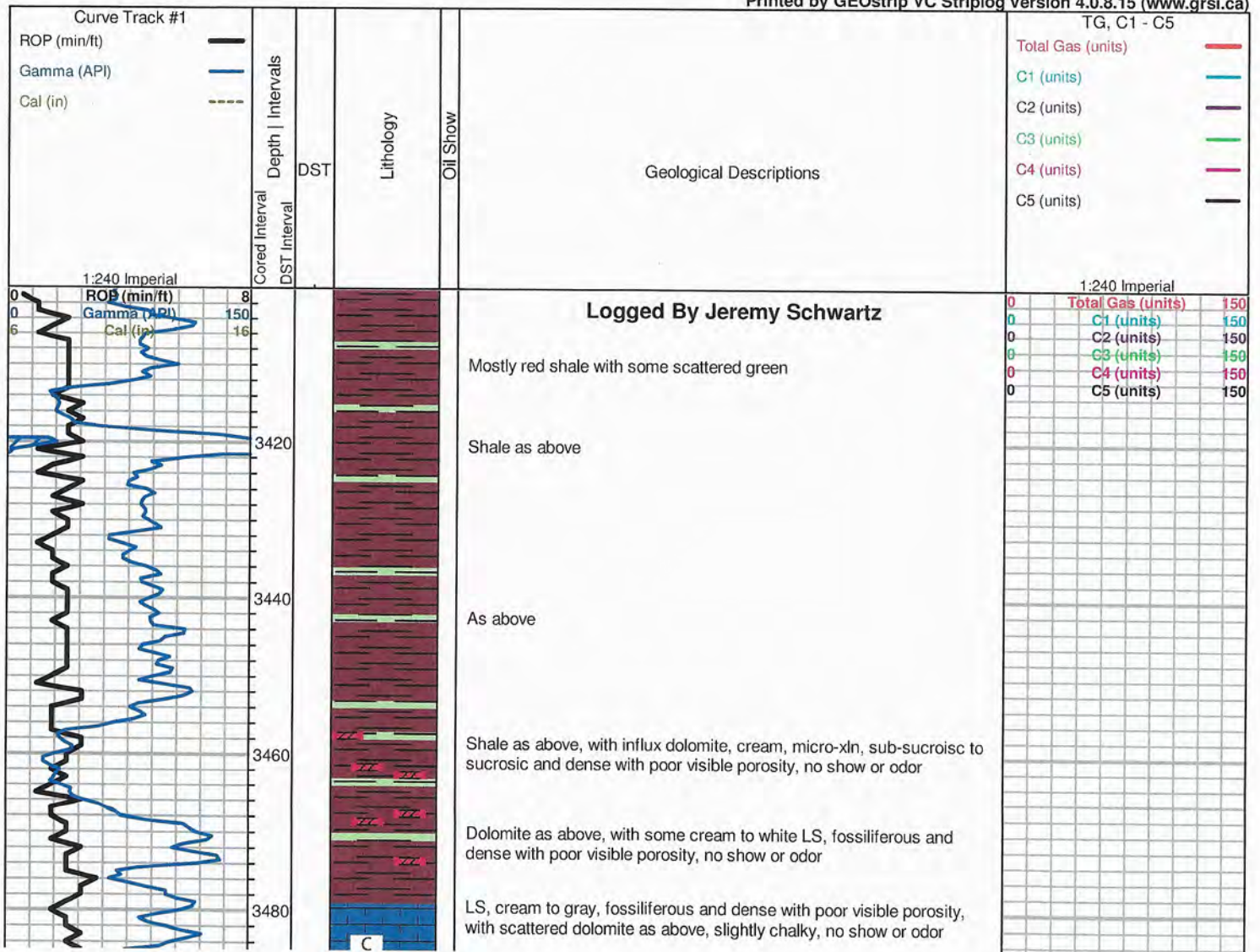
Oil Show

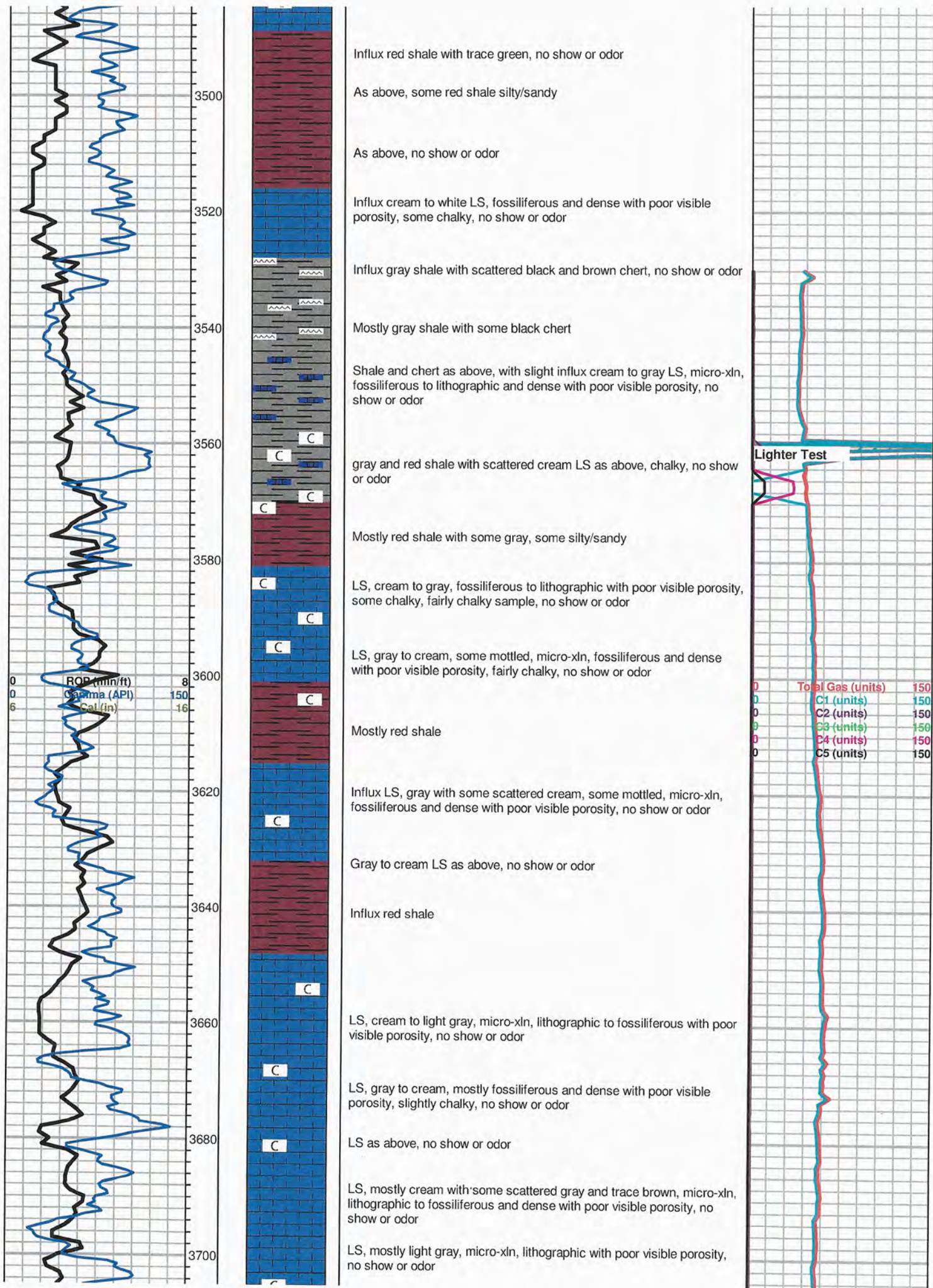
● Good Show
● Fair Show
● Poor Show
○ Spotted or Trace
○ Questionable Stn
D Dead Oil Stn
■ Fluorescence
* Gas

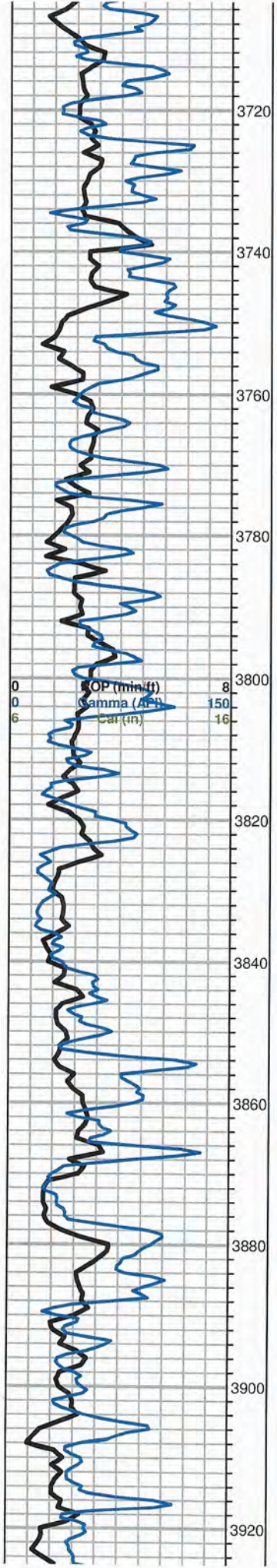
DST

■ DST Int
■ DST alt
■ Core
|| tail pipe

Printed by GEOstrip VC Striplog version 4.0.8.15 (www.grsi.ca)







LS as above, slightly chalky, no show or odor

LS, light gray to cream, micro-xln, mostly lithographic with poor visible porosity, no show or odor

LS as above, slightly chalky, no show or odor

LS, gray with some scattered cream and brown, lithographic with poor visible porosity, no show or odor

LS as above, no show or odor

LS, gray to brown with some scattered cream, micro-xln, lithographic and dense with poor visible porosity, no show or odor

LS, gray to cream, micro-xln, mostly lithographic with poor visible porosity, with some scattered white to cream, fossiliferous, chalky in part with scattered dead flaky to tarry black stain, NSFO upon break, fairly chalky sample, no fluor., or odor

LS, gray to cream with some scattered brown, micro-xln, lithographic to fossiliferous with poor visible porosity, slightly chalky, no show or odor

LS, cream, micro-xln, mostly lithographic with poor visible porosity, fairly chalky, no show or odor

LS as above, fairly chalky, no show or odor

LS, cream to white, micro-xln, lithographic with some scattered fossiliferous and oolitic, poor visible porosity, chalky, no show or odor

LS, cream to light gray, micro-xln, lithographic to fossiliferous, noticeably less chalky, no show or odor

LS, gray to cream, micro-xln, fossiliferous to lithographic with poor visible porosity, no show or odor

LS as above, no show or odor

LS, cream to light gray, micro-xln, lithographic to fossiliferous and dense with poor visible porosity, no show or odor

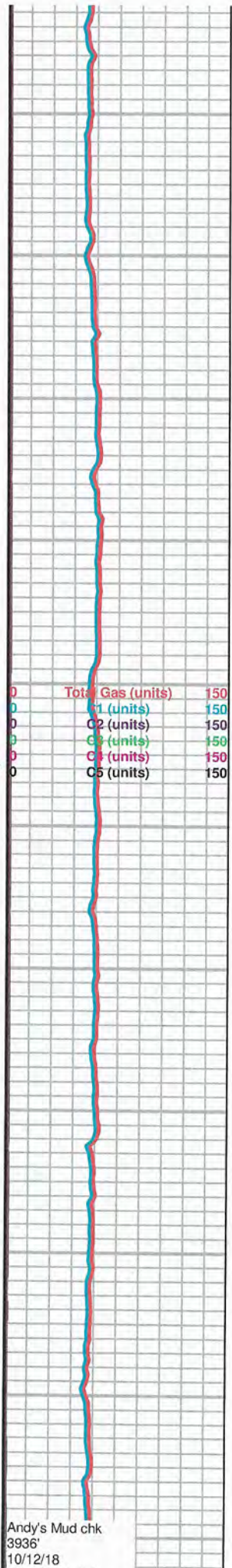
Topeka 3886 (-751)

LS, cream to light gray, micro-xln, lithographic to fossiliferous with poor visible porosity, no show or odor

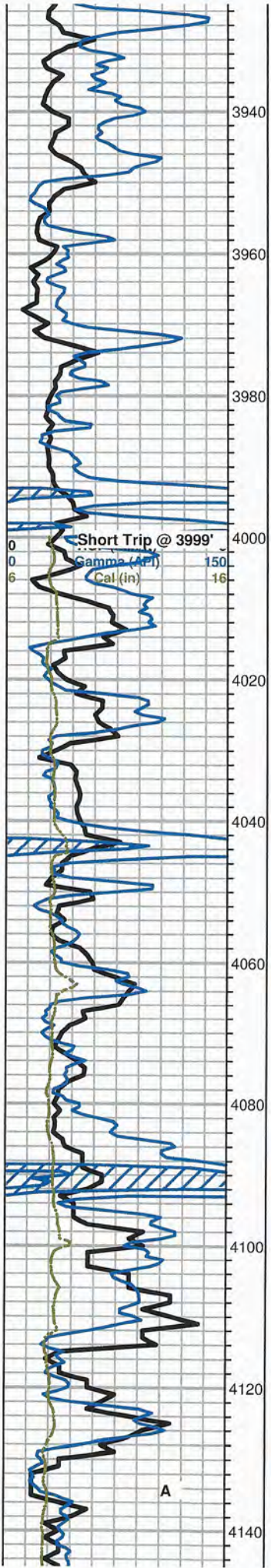
LS as above, slightly chalky, no show or odor

LS as above, slightly less chalky, no show or odor

LS, cream to light gray with some scattered white, micro-xln, lithographic to fossiliferous with poor visible porosity, some chalky in part, fairly chalky, no show or odor



Andy's Mud chk
3936'
10/12/18



part, fairly cherty, no show or odor

LS, cream, micro-xln, lithographic to fossiliferous with poor visible porosity, no show or odor

LS as above, with slight influx red, maroon, and gray shale, no show or odor

LS, cream to light gray, micro-xln, fossiliferous with poor visible porosity, very chalky, no show or odor

LS as above, very chalky, no show or odor

LS, cream to light gray and gray, micro-xln, lithographic to fossiliferous with poor visible porosity, fairly chalky, no show or odor

LS, mostly cream with some scattered light gray, micro-xln, lithographic to fossiliferous with poor visible porosity, fairly chalky, no show or odor

LS, cream, micro-xln, mostly fossiliferous with poor visible porosity, some chalky, slightly chalky sample, no show or odor

LS as above, with influx red and gray shale, no show or odor

LS, cream with some scattered white, micro-xln, fossiliferous to lithographic with poor visible porosity, some chalky, slightly chalky sample, no show or odor

LS, cream to light gray, micro-xln, mostly lithographic with poor visible porosity, slightly chalky sample, no show or odor

LS, cream to gray with some white, micro-xln, lithographic to fossiliferous with poor visible porosity, slightly chalky, no show or odor

LS as above, with slight influx cream to light gray crypto xln, poor visible porosity, no show or odor

LS, cream to gray, micro-xln, lithographic to fossiliferous with poor visible porosity, slightly chalky, no show or odor

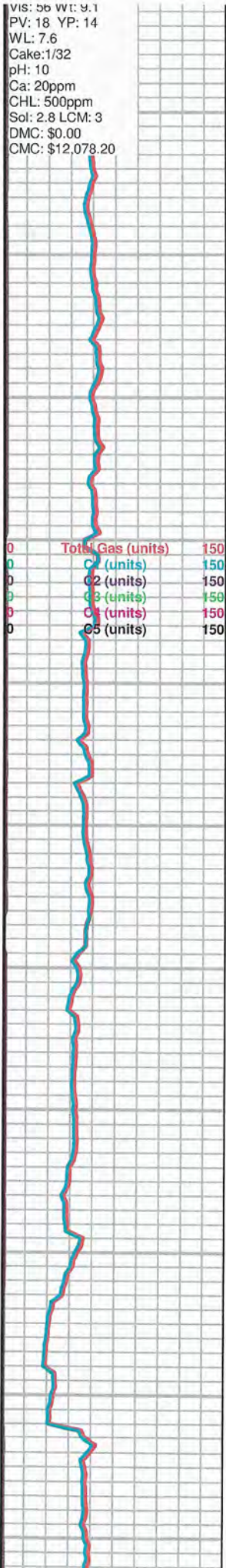
LS as above, fairly chalky, no show or odor

Heebner 4089 (-954)
Shale, black carbonaceous

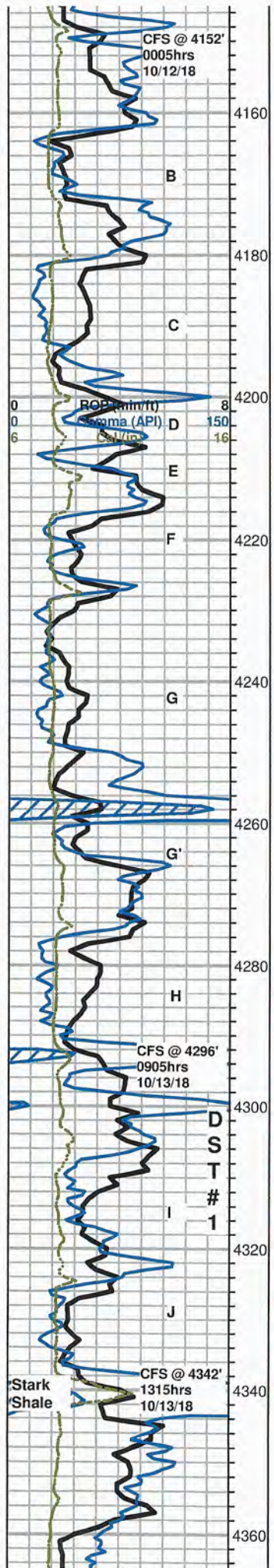
Toronto 4114 (-979)
LS, cream to white, micro-xln, mostly lithographic with poor visible porosity, fairly chalky, no show or odor

Lansing 4129 (-994)
LS, cream to light gray and white, micro-xln, mostly lithographic to slightly fossiliferous with poor visible porosity, some very scattered oolitic to oomoldic, dense with overall poor oomold porosity and barren, chalky, no show, fluor., or odor

4152' 30" LS, cream, micro-xln, mostly lithographic, some scattered oomoldic



VIS: 56 Wt: 9.1
PV: 18 YP: 14
WL: 7.6
Cake: 1/32
pH: 10
Ca: 20ppm
CHL: 500ppm
Sol: 2.8 LCM: 3
DMC: \$0.00
CMC: \$12,078.20



7102 00 LS, cream, micro-xln, mostly lithographic, some scattered oomoldic with mostly poor visible porosity, barren, chalky, no show or odor

4152' 60" LS as above, few chips cream, micro-xln, lithographic with few scattered small vugs, one chip with a large vug, with oomoldic as above, some very scattered fair oomold porosity, chalky, no show or odor

LS, cream to gray with some scattered white, micro-xln, mostly lithographic with poor visible porosity, slightly chalky, no show or odor

LS, gray to cream, micro-xln, mostly lithographic with poor visible porosity, slightly chalky, no show or odor

LS as above, slightly chalky, no show or odor

LS, mostly gray with some scattered cream, micro-xln, lithographic with poor visible porosity, no show or odor

LS, cream to white with some gray, some chalky in part, trace oolitic to oomoldic with poor oomold porosity, dense and barren, no show or odor

LS, white to cream with some scattered light gray, lithographic and dense with poor visible porosity, slightly chalky, no show or odor


LS, mostly same as above, slightly chalky, no show or odor

LS as above, with slight influx dark gray to brown, dense with poor visible porosity, very chalky, no show or odor

LS, brown to gray with some cream, micro-xln, lithographic to slightly fossiliferous and dense with poor visible porosity, no show or odor

LS, cream with some scattered white, micro-xln, mostly lithographic and dense with poor visible porosity, with some scattered green shale, slightly chalky, no show or odor

LS, light gray to cream with some scattered white, micro-xln, mostly lithographic and dense with poor visible porosity, fairly chalky, no show or odor

 Arcadian Jerone 1-31dst 1.jpg

4296' 30" & 60" LS, mostly same as above, fairly chalky, no show or odor

LS, cream to gray with some scattered white, mostly lithographic with poor visible porosity and barren, with some scattered chips cream to gray, some chalky in part, with very scattered to scattered mostly poor pinpoint porosity and scattered black stain around areas of porosity, upon break some chips show areas of fair inter-xln porosity with brown stain, NSFO, very slow weak cut with dull yellow fluor., one chip very slowly bleeding free oil to surface, too dense to break, fairly chalky sample, no odor in wet cup

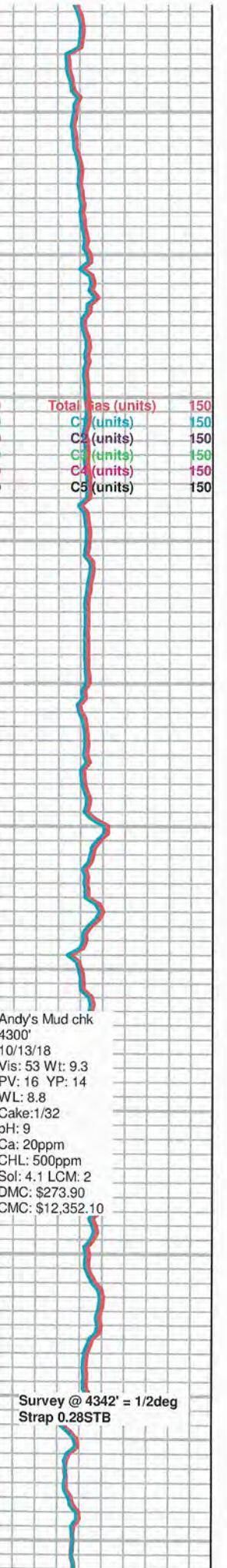
~4320' LS, cream to gray with some scattered white, mostly lithographic and dense with poor visible porosity, few very scattered chips with stain as above, one chip with scattered fair pinpoint porosity and scattered stain, slowly bleeding free oil to surface, upon agitation and break chip has GSFO, chalky, no odor

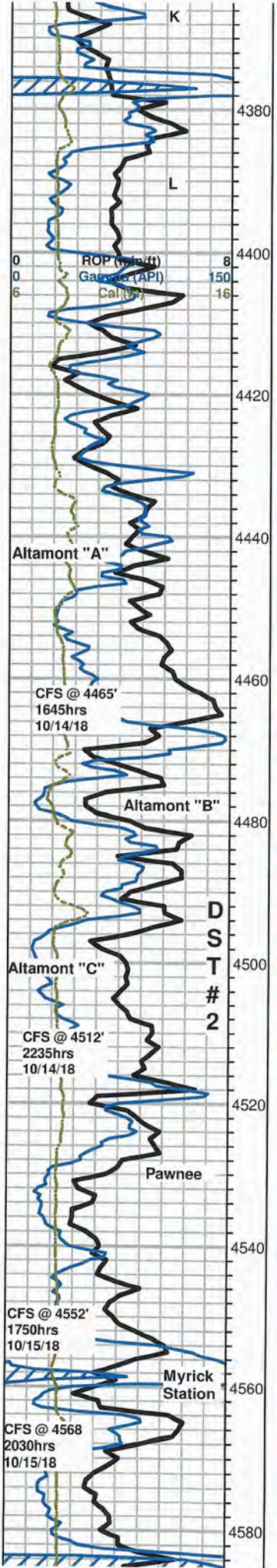
4342' 30" LS, cream to gray, micro-xln, lithographic and dense with poor visible porosity, no show or odor

4342' 60" As above, no show or odor

4350' Shale, gray to black and red

LS, cream to white, micro-xln, mostly lithographic with poor visible





porosity, some chalky, slightly chalky sample, no show or odor

LS as above, with influx gray, red, and trace green shale, no show or odor

LS, cream to light gray with some very scattered white, micro-crypto xkn, lithographic and dense with poor visible porosity, slightly chalky, no show or odor

BKC 4402 (-1267)

Shale, gray, red, black, and trace green

Shale as above, with some scattered SS, light gray to white, vf-f grained, mostly sub-rounded to rounded and well sorted, some fairly well cemented, some friable, barren, NSFO or odor

Marmaton 4424 (-1289)

LS, light gray to cream and white, micro-xln, mostly lithographic with poor visible porosity, slightly chalky, no show or odor

LS, cream to white, micro-xln, lithographic with poor visible porosity, some chalky, slightly chalky sample, no show, fluor., or odor

LS, light gray to cream, micro-xln, lithographic and dense with poor visible porosity, no show, fluor., or odor

LS as above, with influx gray LS, silty, dense to fairly soft, no show, fluor., or odor

4465' 30"&45' LS and silty LS as above, with slight influx maroon, red, and gray shale, no show, fluor., or odor

Mostly gray, red, maroon, and trace green shale, with some scattered cream to gray and brown LS, lithographic with poor visible porosity, no show or odor

LS, mostly light gray with some scattered cream and white, micro-xln, lithographic with poor visible porosity, some chalky in part, fairly chalky sample, no show or odor

Arcadian Jerone 1-31 dst 2.jpg

4512' 30" LS, mostly same as above, with some very scattered chips cream to white with few scattered small vugs to slightly vuggy areas with stain mostly confined to areas of porosity, few small chips with fair vuggy porosity and mostly saturated to saturated brown stain, some chalky in part, upon break chips have S-FSFO, chips with show have mostly even dull yellow fluor., slow streaming cut with bright white fluor., no odor

4512' 60" Mostly same as above, noticeable less shows, found several small chips cream, oolitic with mostly poor visible porosity and scattered inter-oolite staining, upon break several chips have GSFO, no odor

Mostly gray and red shale with trace green, with some scattered LS, cream, micro-xln, lithographic with poor visible porosity, with some scattered white, chalky in part, and trace tan chert, no show or odor

LS, cream to light gray with some scattered brown, micro-xln, mostly lithographic with poor visible porosity, some white chalky in part, with some very scattered white chert, no show or odor

4552' 30" LS, gray to cream, micro-xln, fossiliferous to lithographic with poor visible porosity, few very scattered small chips white and chalky, with very scattered spotty black stain, upon break SSFO, with some scattered white to brown chert, no fluor., or odor

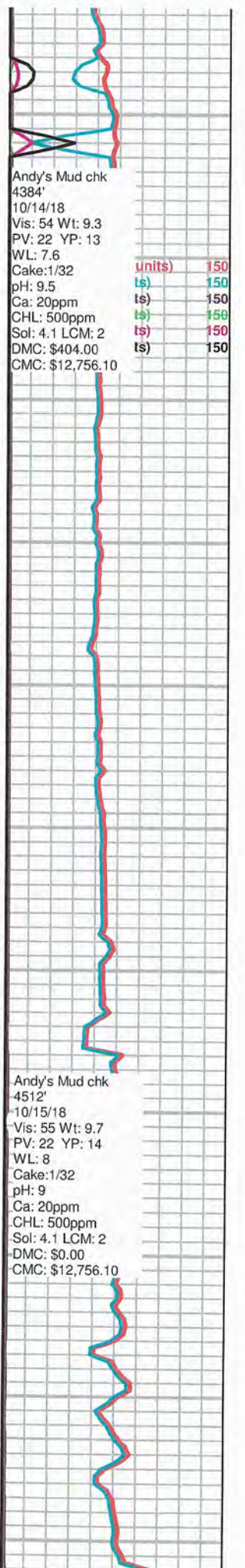
4552' 60" LS, brown to dark gray with some cream, micro-xln, lithographic to fossiliferous with trace oolitic, dense with poor visible porosity, with scattered white chert, no show or odor

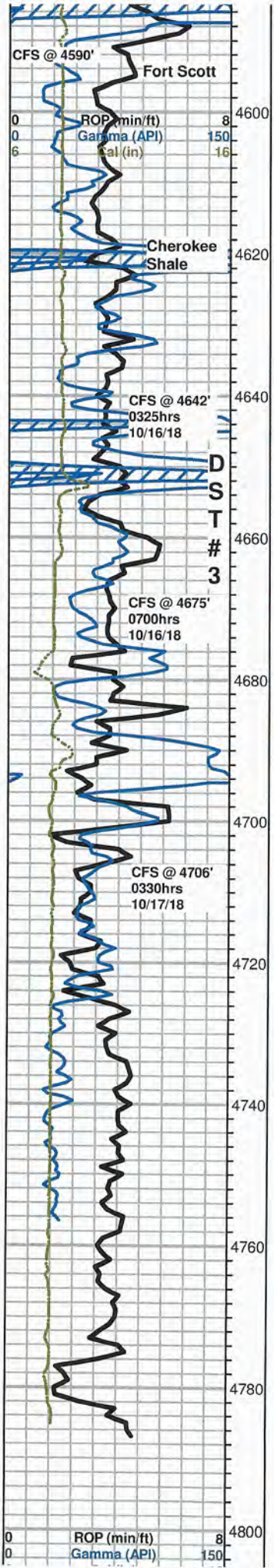
~4555' LS, mostly same as above, found one small chips cream, oolitic with poor visible porosity and very scattered inter-oolite stain, SSFO upon break, no odor

4568' 30" LS, gray to brown with some cream, micro-xln, fossiliferous to lithographic and dense with poor visible porosity, no odor

4568; 60" Mostly same as above, found few very scattered small chips white, chalky, with trace black stain and poor visible porosity, SSFO upon break, as well as one small chip cream, with areas of fair vuggy porosity and stain mostly confined to porosity, no odor

LS, cream, micro-xln, mostly lithographic with poor visible porosity, some





chalky, with some scattered gray to brown and white chert, influx black shale, no odor

4590' 30" & 60" LS, mostly cream, micro-xln, lithographic with poor visible porosity, some chalky, slightly chalky sample, with some scattered white to light gray chert, no shows, scattered dull fluor., no cut, no odor

LS, light gray to cream, micro-xln, lithographic with poor visible porosity, no show or odor

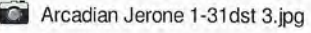
LS, brown to gray and cream, micro-xln, lithographic and dense with poor visible porosity, some very scattered secondary re-crystallization, with some brown to black chert and scattered black shale, no show or odor

LS, light gray to cream, micro-xln, mostly lithographic and dense with poor visible porosity, no show, scattered dull yellow fluor., no odor

4642' 30" LS, mostly cream with some scattered light gray, micro-xln, lithographic with poor visible porosity, no show or odor

4642' 60" LS as above, no show, scattered dull yellow fluor., no odor

LS, cream to gray with some scattered brown, micro-xln, lithographic with poor visible porosity, no show, very scattered dull yellow fluor., no odor

 Arcadian Jerone 1-31dst 3.jpg

LS, brown to cream, micro-xln, some lithographic with scattered vugs to areas of slightly vuggy porosity with stain mostly confined to porosity, some heavy black droplets bleeding to surface, upon break mostly N-SSFO, some with fair show gas bubbles, some chips too dense to break, slow streaming cut with milky white fluor., also with some chalky in part with scattered tarry black to wet black stain and occasional heavy black free oil droplets bleeding to surface, scattered dull fluor., FSFO in tray, fair odor

4675' stop sample, Mostly same as above, with increasing shows, upon break some show fair inter-xln porosity with saturated stain and S-FSFO, GSFO in tray, good odor

4675' 30" LS as above, shows noticeably decreasing, FSFO in tray, good odor

4675' 60" LS, cream to gray, micro-xln, lithographic with poor visible porosity, mostly barren, few scattered shows as above, gassy, poor fleeting odor

~4690' Mostly gray shale with cream LS, abundant LCM from mud system, fairly chalky sample, no show, fluor., or odor

Mississippian 4706 (-1571)

~4706' 30" Mix of LS, shale, and some scattered white to cream chert, with SS, gray to clear, most fine with some scattered medium quartz grains, mostly sub-rounded and well sorted, friable, with scattered dead black gislonitic stain, some clusters have very scattered areas of wet, tarry black stain, pyritic, very slow weak cut in some with dull milky white fluor., NSFO, no fluor., in tray, no odor

4706' 60" Mostly same as above, with slight influx medium-coarse grained SS clusters, mostly sub-rounded and poorly sorted, fairly well-cemented, with scattered dead black gislonitic to very scattered wet, tarry black stain, NSFO upon break, also with influx cream to white and trace orange chert, some fresh and sharp, some weathered, no fluor., or odor

~4710' Mostly same as above, with slight influx cream to light gray LS, lithographic with poor visible porosity, also with slight influx white SS clusters, v-f-grained, sub-rounded to sub-angular, most friable, some fairly well cemented and dense, chalky, barren, no show, fluor., or odor

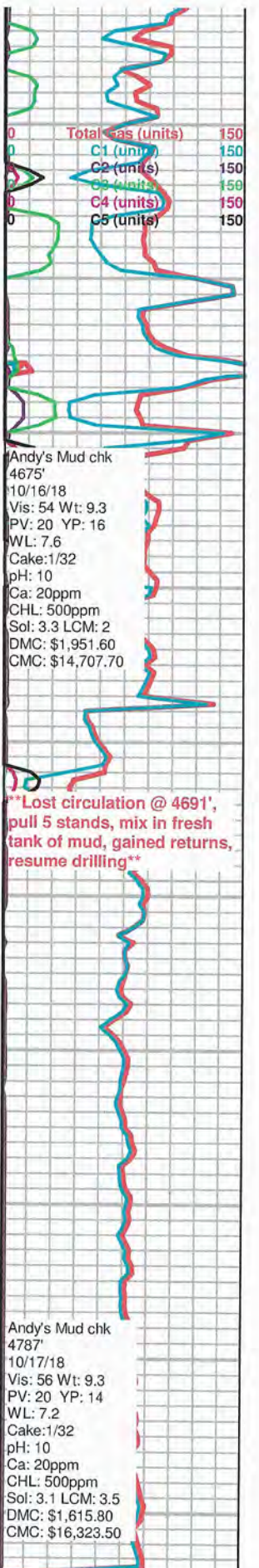
~4720' LS, mostly gray with some scattered cream, lithographic and dense with poor visible porosity, no show, fluor., or odor

~4730' Mostly same as above, with some scattered white. chalky in part, no show, fluor., or odor

~4740' LS, gray to cream, micro-xln, lithographic and dense with poor visible porosity, with scattered light gray to translucent with trace orange chert, no show, fluor., or odor

~4750'~4770' LS, gray to brown with some scattered cream, lithographic and dense with poor visible porosity, very scattered tan to white and translucent chert, no show or odor

LS, mostly cream to gray with influx dark gray, micro-xln, mostly lithographic and very dense with poor visible porosity, no show or odor



Rotary TD 4787' @ 0945hrs 10/17/18
Eli Wireline Services Logging TD @ 4790'
Complete Logging Operations @ 2030hrs 10/17/18
Geologist Jeremy Schwartz off location @ 2130hrs 10/17/18

Survey @ 4787' = 3/4deg

