

KANSAS CORPORATION COMMISSION
OIL & GAS CONSERVATION DIVISION

TEMPORARY ABANDONMENT WELL APPLICATION

OPERATOR: License#
Name:
Address 1:
Address 2:
City: State: Zip:
Contact Person:
Phone:
Contact Person Email:
Field Contact Person:
Field Contact Person Phone:

API No. 15-
Spot Description:
Sec. Twp. S. R.
GPS Location: Lat: Long:
Datum: NAD27 NAD83 WGS84
County: Elevation:
Lease Name: Well #:
Well Type: Oil Gas OG WSW Other:
SWD Permit #: ENHR Permit #:
Gas Storage Permit #:
Spud Date: Date Shut-In:

Table with 7 columns: Conductor, Surface, Production, Intermediate, Liner, Tubing. Rows include Size, Setting Depth, Amount of Cement, Top of Cement, Bottom of Cement.

Casing Fluid Level from Surface: How Determined? Date:
Casing Squeeze(s): to w / sacks of cement, to w / sacks of cement. Date:
Do you have a valid Oil & Gas Lease? Yes No
Depth and Type: Junk in Hole at Tools in Hole at Casing Leaks: Yes No Depth of casing leak(s):
Type Completion: ALT. I ALT. II Depth of: DV Tool: w / sacks of cement Port Collar: w / sack of cement
Packer Type: Size: Inch Set at: Feet
Total Depth: Plug Back Depth: Plug Back Method:

Geological Data:

Table with 4 columns: Formation Name, Formation Top, Formation Base, Completion Information. Rows 1 and 2.

UNDER PENALTY OF PERJURY I HEREBY ATTEST THAT THE INFORMATION CONTAINED HEREIN IS TRUE AND CORRECT TO THE BEST OF MY KNOWLEDGE

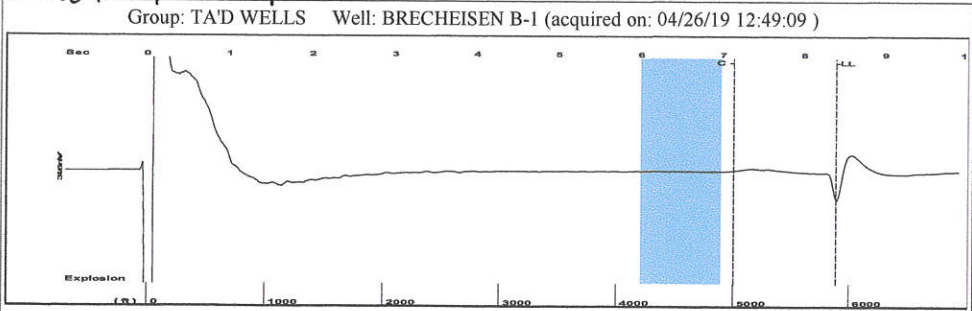
Submitted Electronically

Do NOT Write in This Space - KCC USE ONLY
Date Tested: Results: Date Plugged: Date Repaired: Date Put Back in Service:
Review Completed by: Comments:
TA Approved: Yes Denied Date:

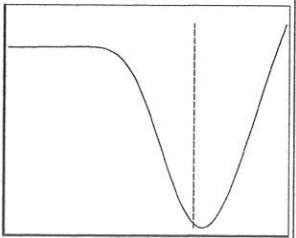
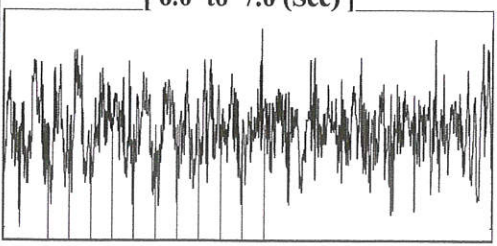
Mail to the Appropriate KCC Conservation Office:

Map of Kansas with 4 numbered regions. Table with 2 columns: Office Address, Phone Number. Rows 1-4.

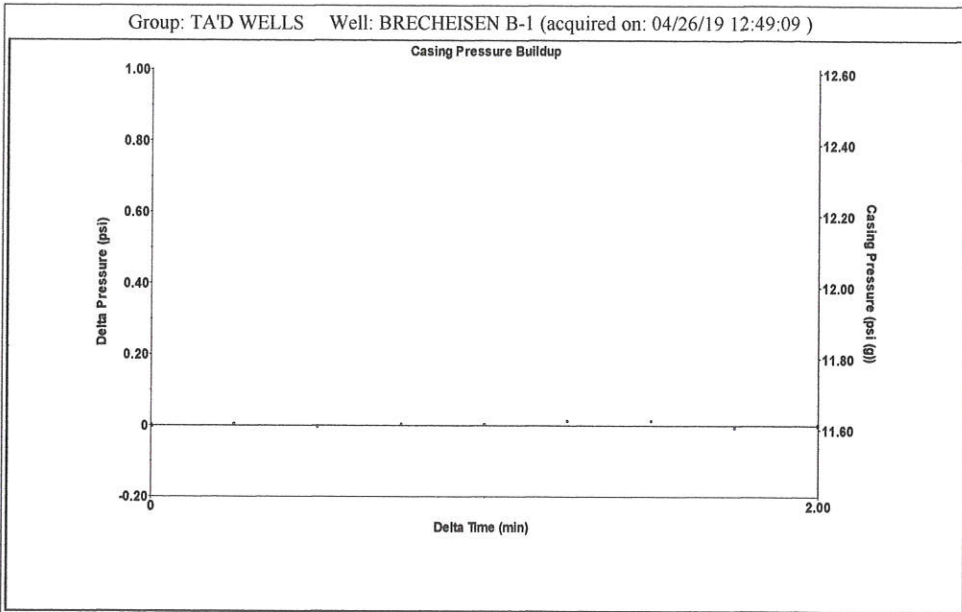
Shot at 350PSI



Filter Type High Pass Automatic Collar Count Yes Time 8.393 sec  
 Manual Acoustic Velo 1427.93 ft/s Manual JTS/sec 22.5225 Joints 185.751 Jts  
 Depth 5888.30 ft



Analysis Method: Automatic



Change in Pressure -0.00 psi PT10857  
 Range 0 - ? psi  
 Change in Time 2.00 min

Group: TA'D WELLS Well: BRECHEISEN B-1 (acquired on: 04/26/19 12:49:09)

Production Current	Potential	Casing Pressure	Producing
Oil -*- BBL/D	-*- BBL/D	11.6 psi (g)	Annular Gas Flow
Water -*- BBL/D	-*- BBL/D	Casing Pressure Buildup	0 Mscf/D
Gas -*- Mscf/D	-*- Mscf/D	-0.001 psi	% Liquid
		2.00 min	100 %
IPR Method Vogel	Gas/Liquid Interface Pressure		
PBHP/SBHP -*-	15.0 psi (g)		
Production Efficiency 0.0			
Oil 40 deg.API	Liquid Level Depth		
Water 1.05 Sp.Gr.H2O	5888.30 ft		
Gas 0.62 Sp.Gr.AIR	Pump Intake Depth		
Acoustic Velocity 1403.15 ft/s	6386.00 ft		
	Formation Depth		
	6685.00 ft		
Formation Submergence			
Total Gaseous Liquid Column HT (TVD)	498 ft		
Equivalent Gas Free Liquid HT (TVD)	498 ft		
Acoustic Test			

Group: TA'D WELLS Well: BRECHEISEN B-1 (acquired on: 04/26/19 12:49:09)

Acoustic Velocity	1403.15 ft/s	Joints counted	152
Joints Per Second	22.1316 jts/sec	Joints to liquid level	185.751
Depth to liquid level	5888.3 ft	Filter Width	20.5225
Automatic Collar Count	Yes	Time to 1st Collar	0.264
			7.132

Conservation Division  
District Office No. 1  
210 E. Frontview, Suite A  
Dodge City, KS 67801



Phone: 620-682-7933  
<http://kcc.ks.gov/>

Dwight D. Keen, Chair  
Shari Feist Albrecht, Commissioner  
Jay Scott Emler, Commissioner

Laura Kelly, Governor

May 07, 2019

Katherine McClurkan  
Merit Energy Company, LLC  
13727 Noel Road, Suite 1200  
Dallas, TX 75240

Re: Temporary Abandonment  
API 15-189-22400-00-00  
Brecheisen B 1  
SE/4 Sec.33-34S-38W  
Stevens County, Kansas

Dear Katherine McClurkan:

"Your temporary abandonment (TA) application for the well listed above has been approved. In accordance with K.A.R. 82-3-111 the TA status of this well will expire 05/07/2020.

- \* If you return this well to service or plug it, please notify the District Office.
- \* If you sell this well you are required to file a Transfer of Operator form, T-1.
- \* If the well will remain temporarily abandoned, you must submit a new TA application, CP-111, before 05/07/2020.

You may contact me at the number above if you have questions.

Very truly yours,

Michael Maier"