

KANSAS CORPORATION COMMISSION
OIL & GAS CONSERVATION DIVISION

TEMPORARY ABANDONMENT WELL APPLICATION

OPERATOR: License#
Name:
Address 1:
Address 2:
City: State: Zip:
Contact Person:
Phone:
Contact Person Email:
Field Contact Person:
Field Contact Person Phone:

API No. 15-
Spot Description:
Sec. Twp. S. R.
feet from N / S Line of Section
feet from E / W Line of Section
GPS Location: Lat: , Long:
Datum: NAD27 NAD83 WGS84
County: Elevation: GL KB
Lease Name: Well #:
Well Type: Oil Gas OG WSW Other:
SWD Permit #: ENHR Permit #:
Gas Storage Permit #:
Spud Date: Date Shut-In:

Table with 7 columns: Conductor, Surface, Production, Intermediate, Liner, Tubing. Rows include Size, Setting Depth, Amount of Cement, Top of Cement, Bottom of Cement.

Casing Fluid Level from Surface: How Determined? Date:
Casing Squeeze(s): to w / sacks of cement, to w / sacks of cement. Date:
Do you have a valid Oil & Gas Lease? Yes No
Depth and Type: Junk in Hole at Tools in Hole at Casing Leaks: Yes No Depth of casing leak(s):
Type Completion: ALT. I ALT. II Depth of: DV Tool: w / sacks of cement Port Collar: w / sack of cement
Packer Type: Size: Inch Set at: Feet
Total Depth: Plug Back Depth: Plug Back Method:

Geological Data:

Table with 4 columns: Formation Name, Formation Top, Formation Base, Completion Information. Rows 1 and 2.

UNDER PENALTY OF PERJURY I HEREBY ATTEST THAT THE INFORMATION CONTAINED HEREIN IS TRUE AND CORRECT TO THE BEST OF MY KNOWLEDGE

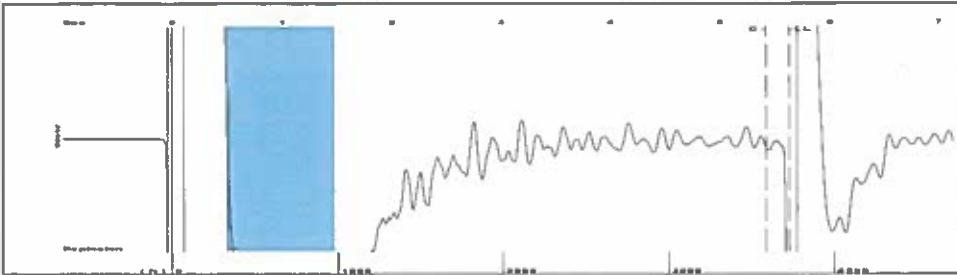
Submitted Electronically

Do NOT Write in This Space - KCC USE ONLY
Date Tested: Results: Date Plugged: Date Repaired: Date Put Back in Service:
Review Completed by: Comments:
TA Approved: Yes Denied Date:

Mail to the Appropriate KCC Conservation Office:

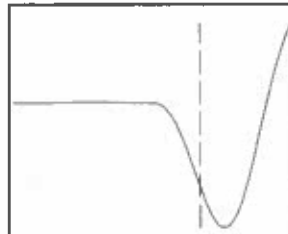
Table with 3 columns: District Office, Address, Phone. Rows for District Office #1, #2, #3, #4.

Group: SUBLETTE Well: Becker Trust 5B (acquired on: 05/01/19 12:21:48 )



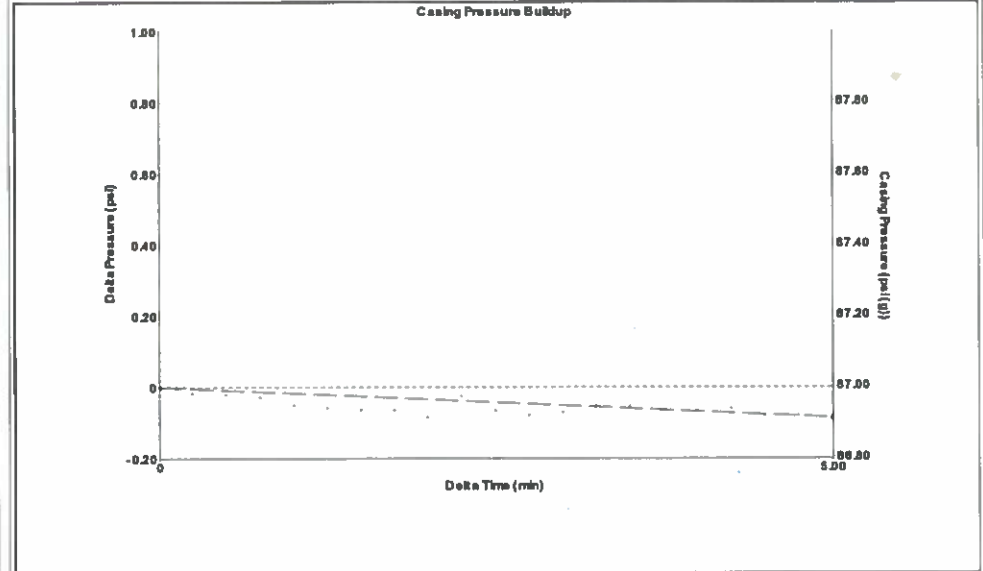
Filter Type High Pass Automatic Collar Count Yes Time 5.637 sec  
 Manual Acoustic Velo 1297.65 ft/s Manual JTS/sec 19.6078 Joints 112.696 Jts  
 Depth 3729.12 ft

[ 0.5 to 1.5 (Sec) ]



Analysis Method: Automatic

Group: SUBLETTE Well: Becker Trust 5B (acquired on: 05/01/19 12:21:48 )



Change in Pressure -0.09 psi PT14679  
 Range 0 - ? psi  
 Change in Time 5.00 min

Group: SUBLETTE Well: Becker Trust 5B (acquired on: 05/01/19 12:21:48 )

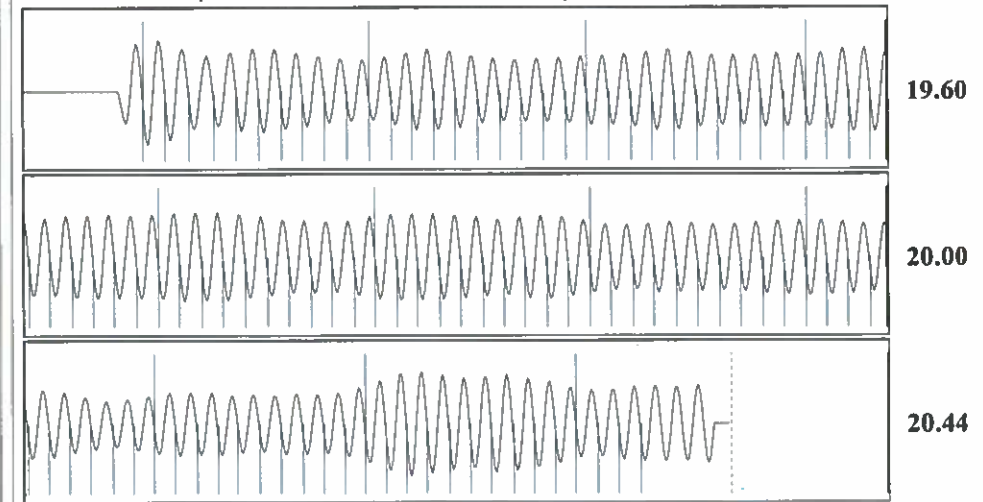
<b>Production</b>			<b>Casing Pressure</b>	87.0 psi (g)
Current	Potential	BBL/D	Casing Pressure Buildup	-0.1 psi
Oil -*-	-*-	BBL/D	5.00 min	
Water -*-	-*-	BBL/D	Gas/Liquid Interface Pressure	96.1 psi (g)
Gas -*-	-*-	Mscf/D	Liquid Level Depth	3729.12 ft
			Pump Intake Depth	5394.00 ft
			Formation Depth	5400.00 ft
<b>IPR Method</b>	Vogel		<b>Pump Intake</b>	647.2 psi (g)
PBHP/SBHP	-*-		Producing BHP	649.9 psi (g)
Production Efficiency	0.0		Static BHP	-*- psi (g)
Oil 40 deg.API				
Water 1.05 Sp.Gr.H2O				
Gas 0.67 Sp.Gr.AIR				
Acoustic Velocity	1323.09 ft/s			
Formation Submergence				
Total Gaseous Liquid Column HT (TVD)	1665 ft			
Equivalent Gas Free Liquid HT (TVD)	1665 ft			
Acoustic Test				



**Producing**

Annular Gas Flow 0 Mscf/D  
 % Liquid 100 %

Group: SUBLETTE Well: Becker Trust 5B (acquired on: 05/01/19 12:21:48 )



Acoustic Velocity	1323.09 ft/s	Joints counted	103
Joints Per Second	19.9922 jts/sec	Joints to liquid level	112.696
Depth to liquid level	3729.12 ft	Filter Width	17.6078
Automatic Collar Count	Yes	Time to 1st Collar	0.276
			21.6078
			5.428

Conservation Division  
District Office No. 1  
210 E. Frontview, Suite A  
Dodge City, KS 67801



Phone: 620-682-7933  
<http://kcc.ks.gov/>

Dwight D. Keen, Chair  
Shari Feist Albrecht, Commissioner  
Jay Scott Emler, Commissioner

Laura Kelly, Governor

May 07, 2019

Katherine McClurkan  
Merit Energy Company, LLC  
13727 Noel Road, Suite 1200  
Dallas, TX 75240

Re: Temporary Abandonment  
API 15-175-22120-00-01  
Becker Trust 5-B21-31-33  
NE/4 Sec.21-31S-33W  
Seward County, Kansas

Dear Katherine McClurkan:

"Your temporary abandonment (TA) application for the well listed above has been approved. In accordance with K.A.R. 82-3-111 the TA status of this well will expire 05/07/2020.

- \* If you return this well to service or plug it, please notify the District Office.
- \* If you sell this well you are required to file a Transfer of Operator form, T-1.
- \* If the well will remain temporarily abandoned, you must submit a new TA application, CP-111, before 05/07/2020.

You may contact me at the number above if you have questions.

Very truly yours,

Michael Maier"