

KANSAS CORPORATION COMMISSION
OIL & GAS CONSERVATION DIVISION

TEMPORARY ABANDONMENT WELL APPLICATION

OPERATOR: License#
Name:
Address 1:
Address 2:
City: State: Zip:
Contact Person:
Phone:
Contact Person Email:
Field Contact Person:
Field Contact Person Phone:

API No. 15-
Spot Description:
Sec. Twp. S. R.
GPS Location: Lat, Long
Datum: NAD27, NAD83, WGS84
County: Elevation:
Lease Name: Well #:
Well Type: Oil, Gas, OG, WSW, Other
SWD Permit #: ENHR Permit #:
Gas Storage Permit #:
Spud Date: Date Shut-In:

Table with 7 columns: Conductor, Surface, Production, Intermediate, Liner, Tubing. Rows include Size, Setting Depth, Amount of Cement, Top of Cement, Bottom of Cement.

Casing Fluid Level from Surface: How Determined? Date:
Casing Squeeze(s): to w / sacks of cement, to w / sacks of cement. Date:
Do you have a valid Oil & Gas Lease? Yes No
Depth and Type: Junk in Hole at Tools in Hole at Casing Leaks: Yes No Depth of casing leak(s):
Type Completion: ALT. I ALT. II Depth of: DV Tool: w / sacks of cement Port Collar: w / sack of cement
Packer Type: Size: Inch Set at: Feet
Total Depth: Plug Back Depth: Plug Back Method:

Geological Data:

Table with 4 columns: Formation Name, Formation Top, Formation Base, Completion Information. Rows 1 and 2.

UNDER PENALTY OF PERJURY I HEREBY ATTEST THAT THE INFORMATION CONTAINED HEREIN IS TRUE AND CORRECT TO THE BEST OF MY KNOWLEDGE

Submitted Electronically

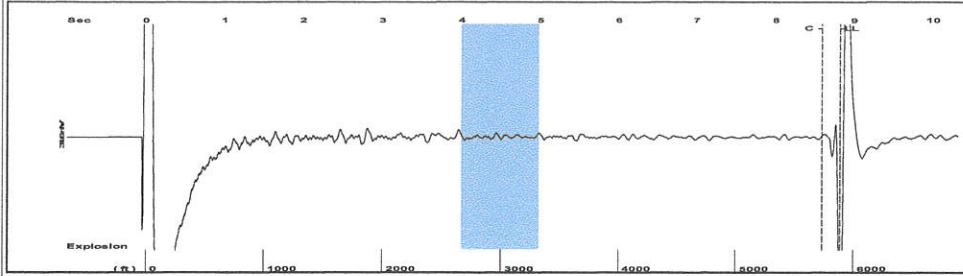
Do NOT Write in This Space - KCC USE ONLY
Date Tested: Results: Date Plugged: Date Repaired: Date Put Back in Service:
Review Completed by: Comments:
TA Approved: Yes Denied Date:

Mail to the Appropriate KCC Conservation Office:

Table with 3 columns: District Office #, Address, Phone. Rows 1-4.

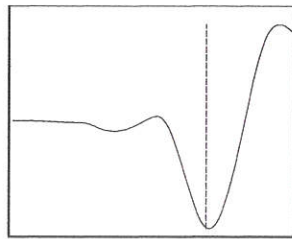
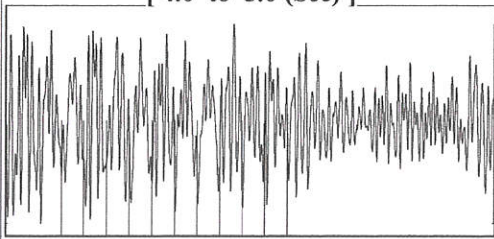
Perry A-2

Group: TA'D WELLS Well: PERRY A-2 (acquired on: 06/20/19 14:20:57)



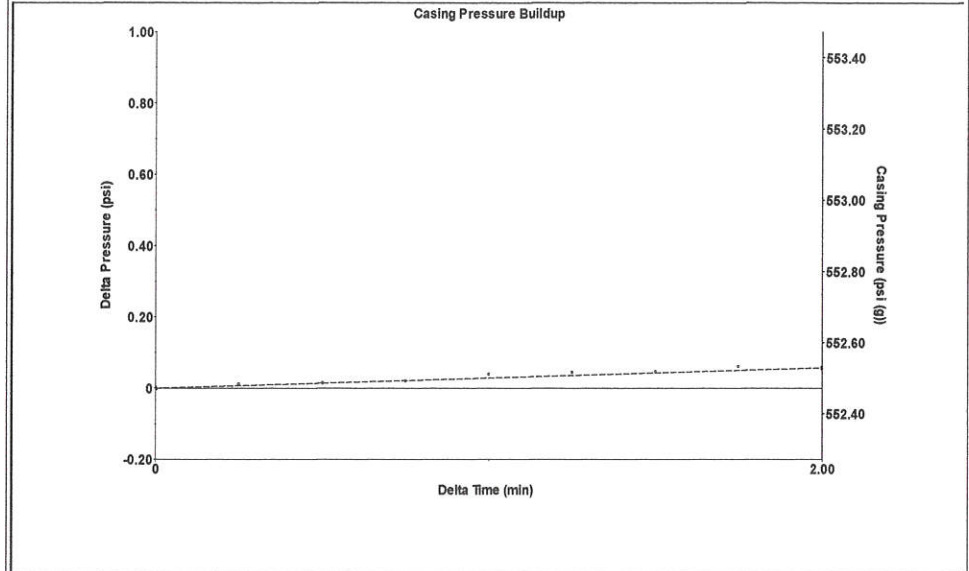
Filter Type High Pass Automatic Collar Count Yes Time 8.821 sec
 Manual Acoustic Velo 1336.91 ft/s Manual JTS/sec 21.4592 Joints 188.991 Jts
 Depth 5887.07 ft

[4.0 to 5.0 (Sec)]



Analysis Method: Automatic

Group: TA'D WELLS Well: PERRY A-2 (acquired on: 06/20/19 14:20:57)



Change in Pressure 0.06 psi PT16755
 Change in Time 2.00 min Range 0 - ? psi

Group: TA'D WELLS Well: PERRY A-2 (acquired on: 06/20/19 14:20:57)

Production Current Potential
 Oil - * - - * - BBL/D
 Water - * - - * - BBL/D
 Gas - * - - * - Mscf/D

IPR Method Vogel
 PBHP/SBHP - * -
 Production Efficiency 0.0

Oil 40 deg.API
 Water 1.05 Sp.Gr.H2O
 Gas 0.63 Sp.Gr.AIR

Acoustic Velocity 1334.79 ft/s

Formation Submergence
 Total Gaseous Liquid Column HT (TVD) 220 ft
 Equivalent Gas Free Liquid HT (TVD) 205 ft

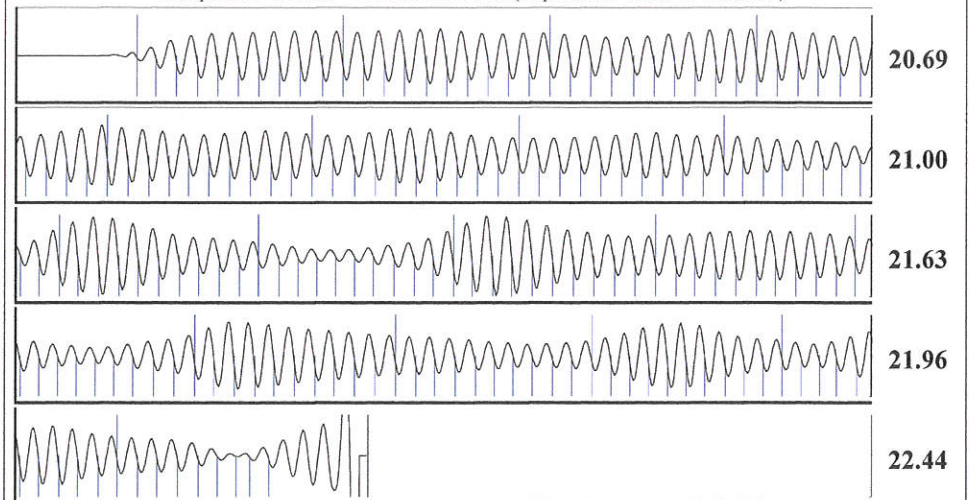
Acoustic Test

Casing Pressure 552.5 psi (g)
 Casing Pressure Buildup 0.057 psi
 2.00 min
 Gas/Liquid Interface Pressure 634.1 psi (g)
 Liquid Level Depth 5887.07 ft
 Pump Intake Depth 6107.00 ft
 Formation Depth 6186.00 ft



Producing
 Annular Gas Flow 2 Mscf/D
 % Liquid 93 %
 Pump Intake 700.0 psi (g)
 Producing BHP 734.1 psi (g)
 Static BHP - * - psi (g)

Group: TA'D WELLS Well: PERRY A-2 (acquired on: 06/20/19 14:20:57)



Acoustic Velocity 1334.79 ft/s Joints counted 178
 Joints Per Second 21.4251 jts/sec Joints to liquid level 188.991
 Depth to liquid level 5887.07 ft Filter Width 19.4592 23.4592
 Automatic Collar Count Yes Time to 1st Collar 0.28 8.588

June 25, 2019

Katherine McClurkan
Merit Energy Company, LLC
446 South Road M
DALLAS, TX 75240

Re: Temporary Abandonment
API 15-189-21612-00-00
Perry A 2
NE/4 Sec.04-33S-38W
Stevens County, Kansas

Dear Katherine McClurkan:

"Your temporary abandonment (TA) application for the well listed above has been approved. In accordance with K.A.R. 82-3-111 the TA status of this well will expire 06/25/2020.

- * If you return this well to service or plug it, please notify the District Office.
- * If you sell this well you are required to file a Transfer of Operator form, T-1.
- * If the well will remain temporarily abandoned, you must submit a new TA application, CP-111, before 06/25/2020.

You may contact me at the number above if you have questions.

Very truly yours,

Michael Maier"