

KANSAS CORPORATION COMMISSION
OIL & GAS CONSERVATION DIVISION

TEMPORARY ABANDONMENT WELL APPLICATION

OPERATOR: License#
Name:
Address 1:
Address 2:
City: State: Zip:
Contact Person:
Phone:
Contact Person Email:
Field Contact Person:
Field Contact Person Phone:

API No. 15-
Spot Description:
Sec. Twp. S. R.
GPS Location: Lat: Long:
Datum: NAD27 NAD83 WGS84
County: Elevation:
Lease Name: Well #:
Well Type: Oil Gas OG WSW Other:
SWD Permit #: ENHR Permit #:
Gas Storage Permit #:
Spud Date: Date Shut-In:

Table with 7 columns: Conductor, Surface, Production, Intermediate, Liner, Tubing. Rows include Size, Setting Depth, Amount of Cement, Top of Cement, Bottom of Cement.

Casing Fluid Level from Surface: How Determined? Date:
Casing Squeeze(s): to w / sacks of cement, to w / sacks of cement. Date:
Do you have a valid Oil & Gas Lease? Yes No
Depth and Type: Junk in Hole at Tools in Hole at Casing Leaks: Yes No Depth of casing leak(s):
Type Completion: ALT. I ALT. II Depth of: DV Tool: w / sacks of cement Port Collar: w / sack of cement
Packer Type: Size: Inch Set at: Feet
Total Depth: Plug Back Depth: Plug Back Method:

Geological Date:

Table with 4 columns: Formation Name, Formation Top, Formation Base, Completion Information. Rows 1 and 2.

UNDER PENALTY OF PERJURY I HEREBY ATTEST THAT THE INFORMATION CONTAINED HEREIN IS TRUE AND CORRECT TO THE BEST OF MY KNOWLEDGE

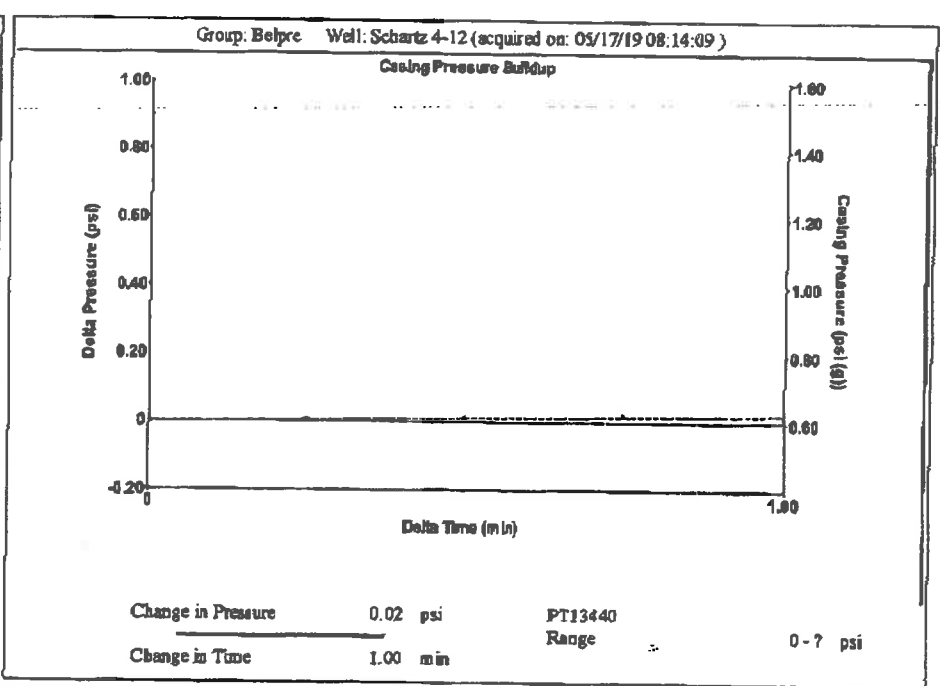
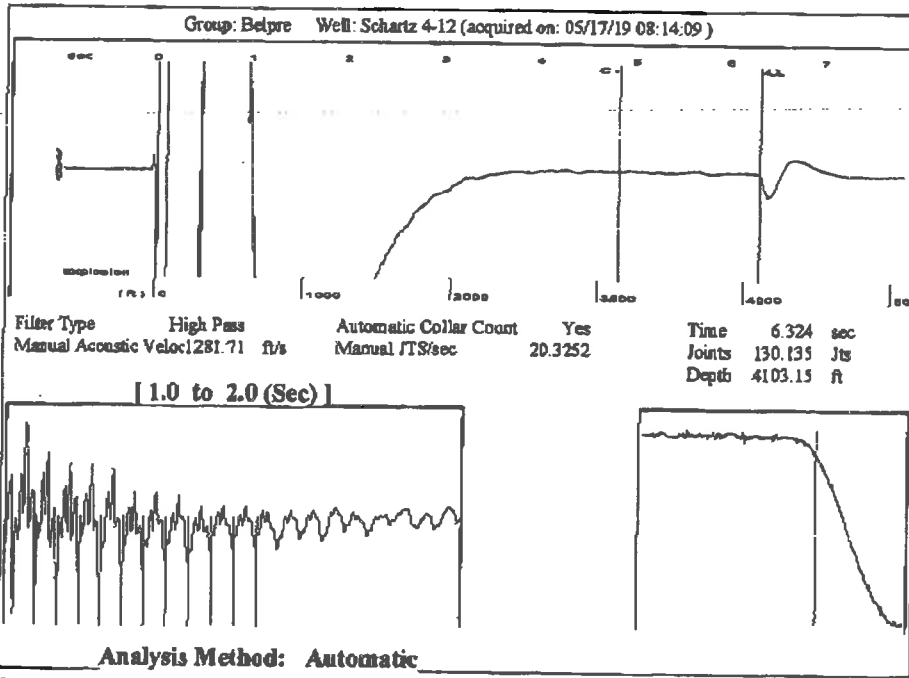
Submitted Electronically

Do NOT Write in This Space - KCC USE ONLY
Date Tested: Results: Date Plugged: Date Repaired: Date Put Back in Service:
Review Completed by: Comments:
TA Approved: Yes Denied Date:

Mail to the Appropriate KCC Conservation Office:

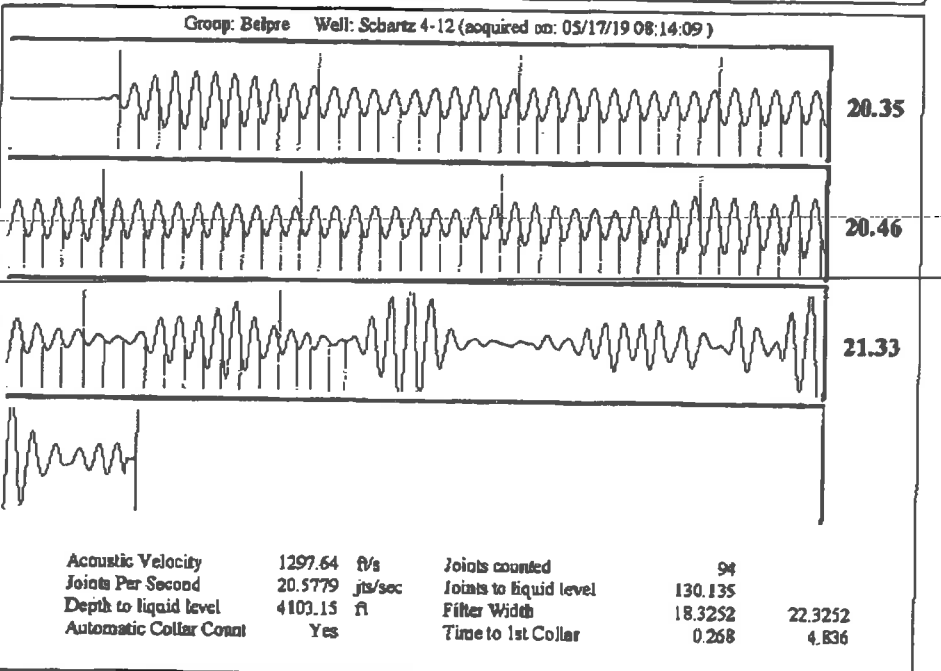
Table with 2 columns: Office Address, Phone. Rows for KCC District Office #1, #2, #3, #4.





Group: Belpre Well: Scharz 4-12 (acquired on: 05/17/19 08:14:09)

Production Current	Potential	Casing Pressure	Producing
Oil - - -	- - - BBL/D	0.6 psi (g)	
Water - - -	- - - BBL/D	Casing Pressure Buildup	
Gas - - -	- - - Misc/D	0.020 psi	
		1.00 min	Angular Gas Flow
JFR Method	Vogel	Gas/Liquid Interface Pressure	0 Misc/D
PBHP/SBHP	- - -	2.2 psi (g)	% Liquid
Production Efficiency	0.0		98 %
Oil 40 deg API		Liquid Level Depth	
Water 1.05 Sp.Gr H2O		4103.15 ft	
Gas 0.71 Sp.Gr AIR		Pump Intake Depth	
Acoustic Velocity	1297.64 ft/s	4351.00 ft	
		Formation Depth	
		4311.00 ft	
Formation Submergence			
Total Gaseous Liquid Column HT (TVD)		248 ft	
Equivalent Gas Free Liquid HT (TVD)		244 ft	
Acoustic Test			
		Pump Intake	
		84.6 psi (g)	
		Producing BHP	
		71.1 psi (g)	
		Static BHP	
		- - - psi (g)	



May 21, 2019

Loveness Mpanje
F. G. Holl Company L.L.C.
9431 E CENTRAL STE 100
WICHITA, KS 67206-2563

Re: Temporary Abandonment
API 15-047-21031-00-00
SCHARTZ 4-12
SE/4 Sec.12-24S-17W
Edwards County, Kansas

Dear Loveness Mpanje:

"Your temporary abandonment (TA) application for the well listed above has been approved. In accordance with K.A.R. 82-3-111 the TA status of this well will expire 05/21/2020.

- * If you return this well to service or plug it, please notify the District Office.
- * If you sell this well you are required to file a Transfer of Operator form, T-1.
- * If the well will remain temporarily abandoned, you must submit a new TA application, CP-111, before 05/21/2020.

You may contact me at the number above if you have questions.

Very truly yours,

Michael Maier"