

KANSAS CORPORATION COMMISSION
OIL & GAS CONSERVATION DIVISION

TEMPORARY ABANDONMENT WELL APPLICATION

OPERATOR: License#
Name:
Address 1:
Address 2:
City: State: Zip:
Contact Person:
Phone:
Contact Person Email:
Field Contact Person:
Field Contact Person Phone:

API No. 15-
Spot Description:
Sec. Twp. S. R.
GPS Location: Lat: Long:
Datum: NAD27 NAD83 WGS84
County: Elevation:
Lease Name: Well #:
Well Type: Oil Gas OG WSW Other:
SWD Permit #: ENHR Permit #:
Gas Storage Permit #:
Spud Date: Date Shut-In:

Table with 7 columns: Conductor, Surface, Production, Intermediate, Liner, Tubing. Rows include Size, Setting Depth, Amount of Cement, Top of Cement, Bottom of Cement.

Casing Fluid Level from Surface: How Determined? Date:
Casing Squeeze(s): to w / sacks of cement, to w / sacks of cement. Date:
Do you have a valid Oil & Gas Lease? Yes No
Depth and Type: Junk in Hole at Tools in Hole at Casing Leaks: Yes No Depth of casing leak(s):
Type Completion: ALT. I ALT. II Depth of: DV Tool: w / sacks of cement Port Collar: w / sack of cement
Packer Type: Size: Inch Set at: Feet
Total Depth: Plug Back Depth: Plug Back Method:

Geological Date:

Table with 4 columns: Formation Name, Formation Top, Formation Base, Completion Information. Rows 1 and 2.

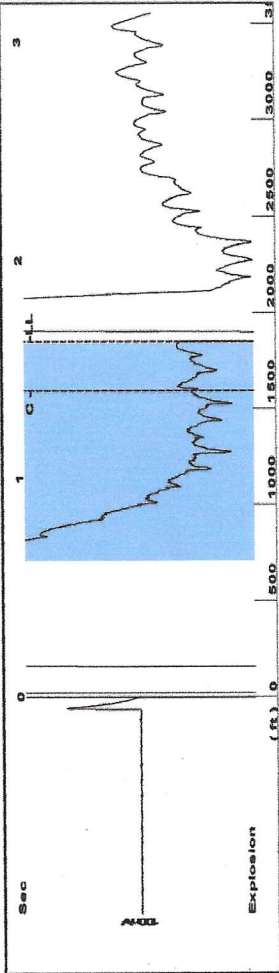
UNDER PENALTY OF PERJURY I HEREBY ATTEST THAT THE INFORMATION CONTAINED HEREIN IS TRUE AND CORRECT TO THE BEST OF MY KNOWLEDGE

Submitted Electronically

Do NOT Write in This Space - KCC USE ONLY
Date Tested: Results: Date Plugged: Date Repaired: Date Put Back in Service:
Review Completed by: Comments:
TA Approved: Yes Denied Date:

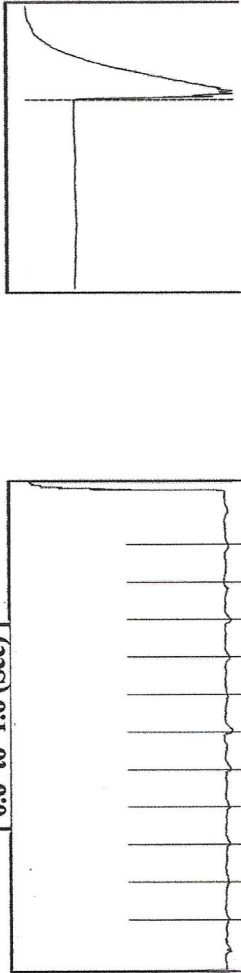
Mail to the Appropriate KCC Conservation Office:

Table with 2 columns: Office Address, Phone. Rows for District Office #1, #2, #3, #4.



Filter Type High Pass Automatic Collar Count Yes
 Manual Acoustic Velo 2216.43 ft/s Manual JTS/sec 13.0378
 Time 1.63 sec
 Joints 21.7527 Jts
 Depth 1848.98 ft

[0.6 to 1.6 (Sec)]



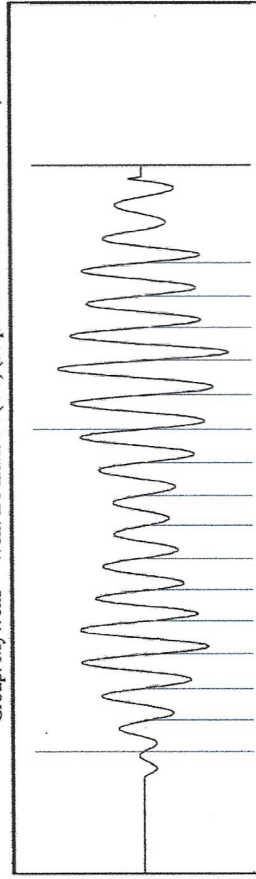
Analysis Method: Automatic

Production	Potential	Casing Pressure	Producing
Oil 0	- * - BBL/D -0.4 psi (g)	Casing Pressure Buildup -0.036 psi	Annular Gas Flow - * - Mscf/D
Water 0	- * - BBL/D -0.036 psi	1.00 min	% Liquid 100 %
Gas 0.0	- * - Mscf/D	Cas/Liquid Interface Pressure 0.1 psi (g)	
IPR Method Vogel		Liquid Level Depth 1848.98 ft	
PBHP/SBHP - * -		Pump Intake Depth - * - ft	
Production Efficiency 0.0		Formation Depth 4424.00 ft	
Oil 39 deg API			
Water 1.05 Sp.Gr.H2O			
Gas 0.55 Sp.Gr.AIR			
Acoustic Velocity 2268.68 ft/s			
Formation Submergence			
Total Gaseous Liquid Column HT (TVD) 2575 ft			
Equivalent Gas Free Liquid HT (TVD) 2575 ft			
Acoustic Test			

NO PRESSURE DATA AVAILABLE

Change in Pressure -0.04 psi PT15504 Range
 Change in Time 1.00 min

0 - ? psi



Acoustic Velocity 2268.68 ft/s Joints counted 15
 Joints Per Second 13.3452 jts/sec Joints to liquid level 11.7527
 Depth to liquid level 1848.98 ft Filter Width 11.0378
 Automatic Collar Count Yes Time to 1st Collar 1.404

May 28, 2019

Kent Strube
Hartman Oil Co., Inc.
10500 E BERKELEY SQ PKWY STE 100
WICHITA, KS 67206

Re: Temporary Abandonment
API 15-055-20417-00-00
MAUNE L 4
SE/4 Sec.30-21S-33W
Finney County, Kansas

Dear Kent Strube:

"Your temporary abandonment (TA) application for the well listed above has been approved. In accordance with K.A.R. 82-3-111 the TA status of this well will expire 05/28/2020.

- * If you return this well to service or plug it, please notify the District Office.
- * If you sell this well you are required to file a Transfer of Operator form, T-1.
- * If the well will remain temporarily abandoned, you must submit a new TA application, CP-111, before 05/28/2020.

You may contact me at the number above if you have questions.

Very truly yours,

Michael Maier"