

ADVANTAGE ELEVATIONS

OIL FIELD SURVEYORS

BOX 8604 - PRATT, KS 67124
(620) 672-6491

422191

INVOICE NO.

INDIAN OIL CO INC

OPERATOR

1

NO.

RETA

FARM

BARBER

COUNTY

17

S

30s

T

13w

R

330' FNL & 330' FEL of Sec.

LOCATION

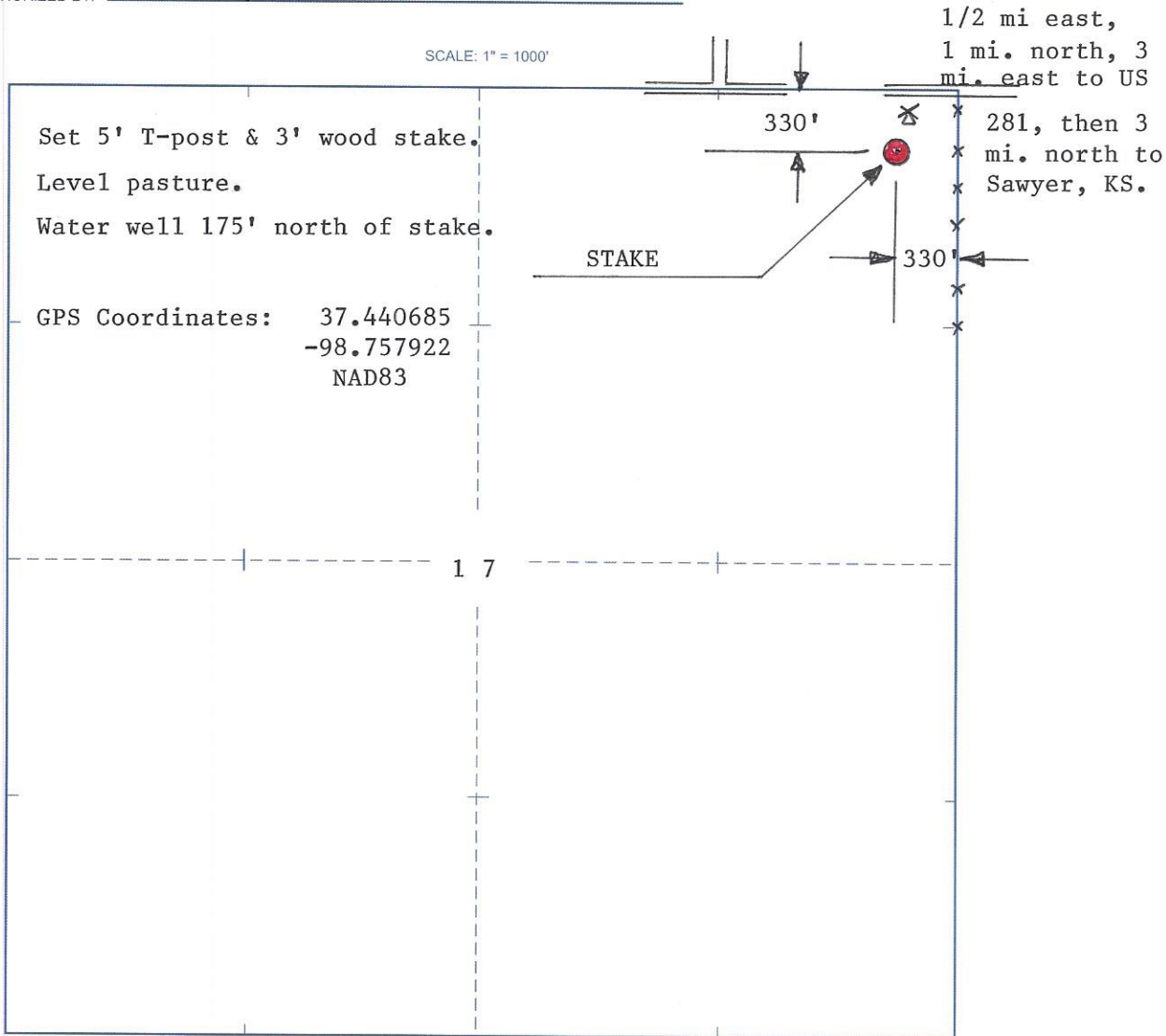
ELEVATION: 1834' GR



INDIAN OIL CO INC
PO BOX 209
MEDICINE LODGE, KS 67104-0209

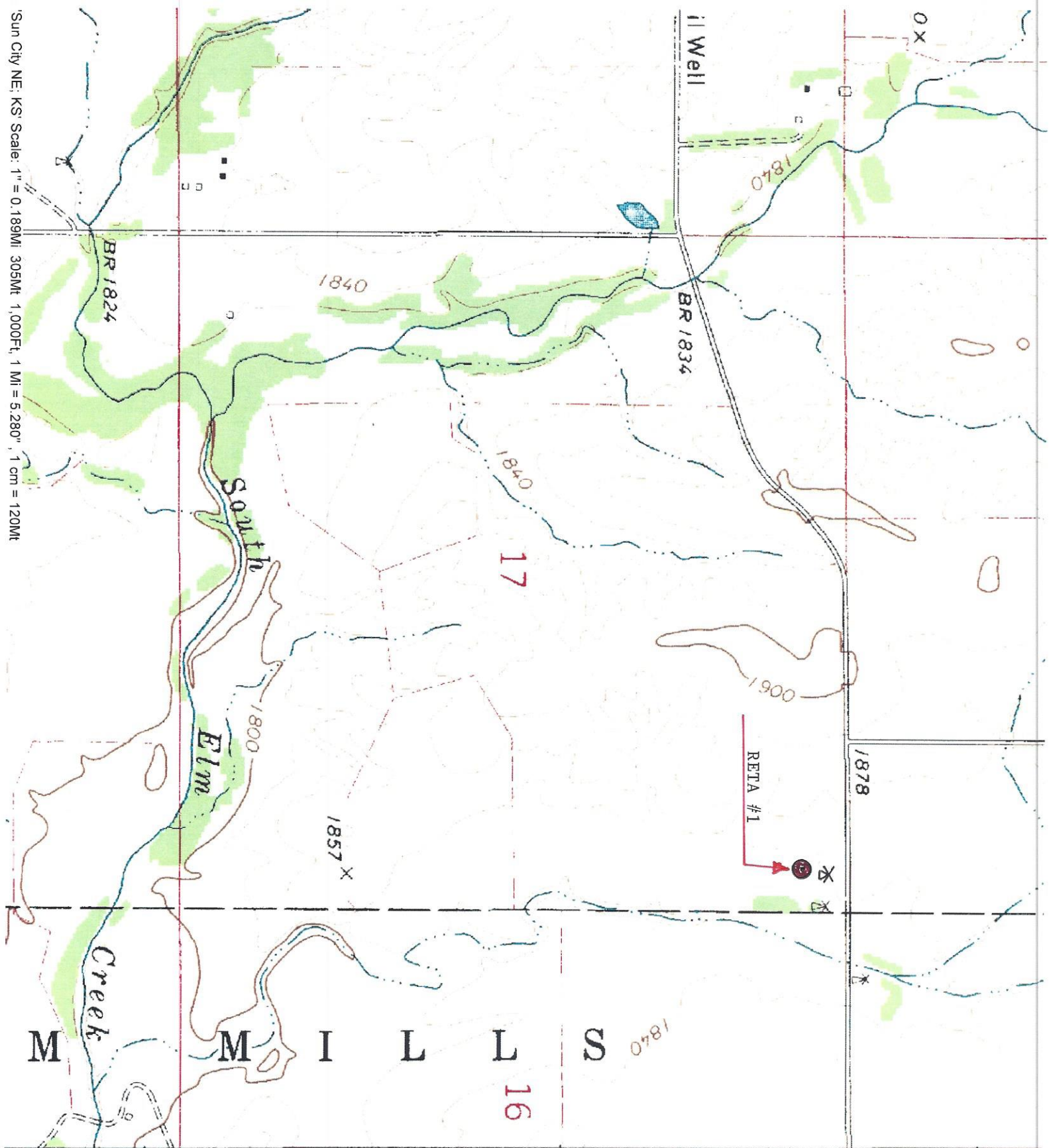
AUTHORIZED BY: Anthony Farrar

SCALE: 1" = 1000'



DATE STAKED: 4/24/19

Sun City NE, KS Scale: 1" = 0.189MI 305MT, 1.000FT, 1 MI = 5.280", 1 cm = 120MT



M I L L S
 4142
 4143 (SAWYER)
 6258 / NW
 4144

INDIAN OIL CO INC

RETA 1

330' FNL & 330' FEL OF SEC.

SEC 17-30s-13w

BARBER CO. KS

GPS COORDINATES: NAD83

Legend



37.440685 -98.7579212

Pinto Rd

NW Elm Mills

 37.440685 -98.7579212

900 ft



© 2018 Google

Google Earth

© 2018 Google