



Fall & Associates
 Stake and Elevation Service
 P.O. Box 222
 Pretty Prairie, KS. 67570
 785-243-7506

Date 5-6-19

Invoice Number 050119

MURFIN DRILLING

3-22

Banister 'A'

Operator

Number

Farm Name

Cheyenne-KS

22

2s

37w

2310'FSL 330'FWL

County-State

S

T

R

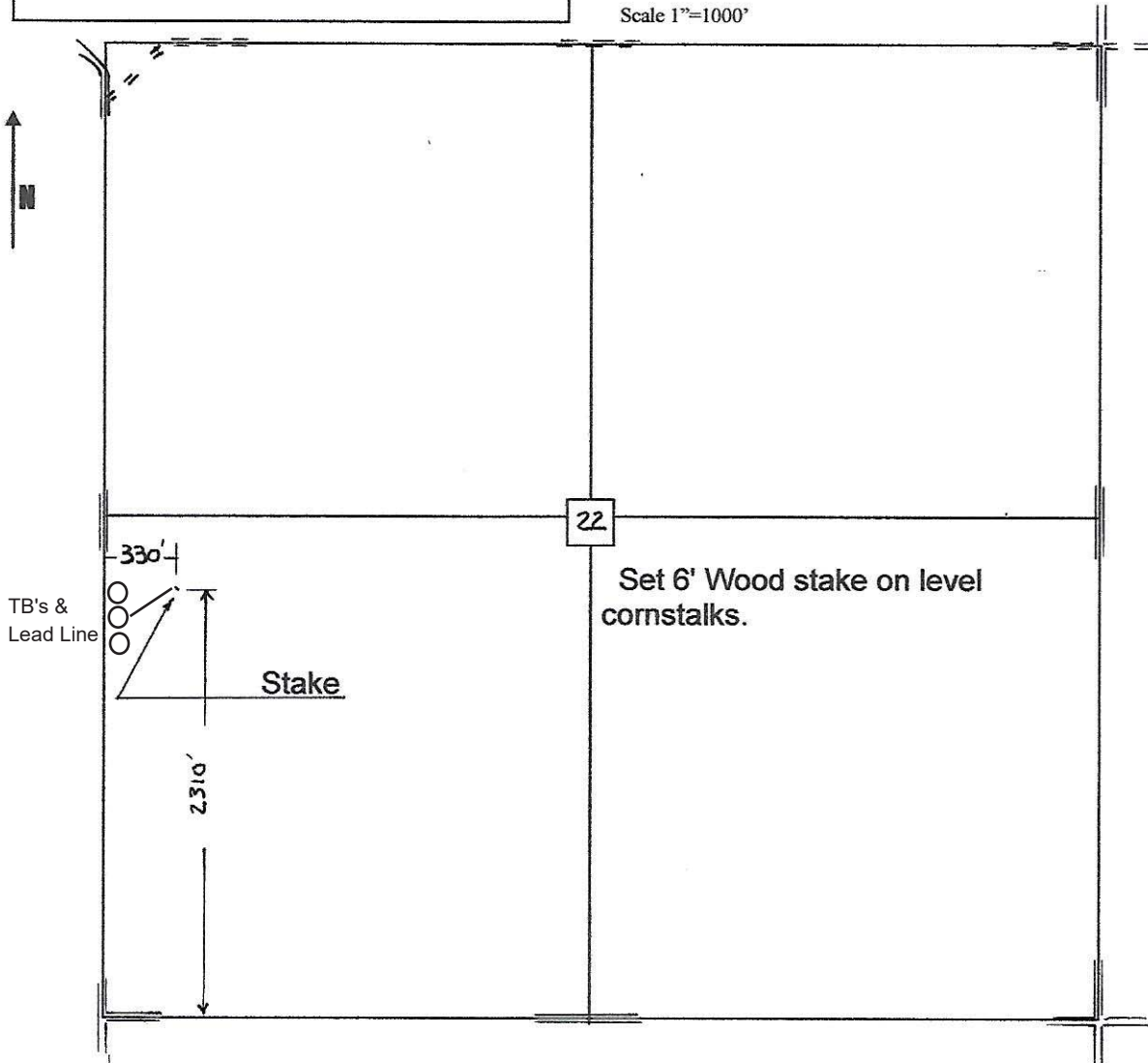
Location

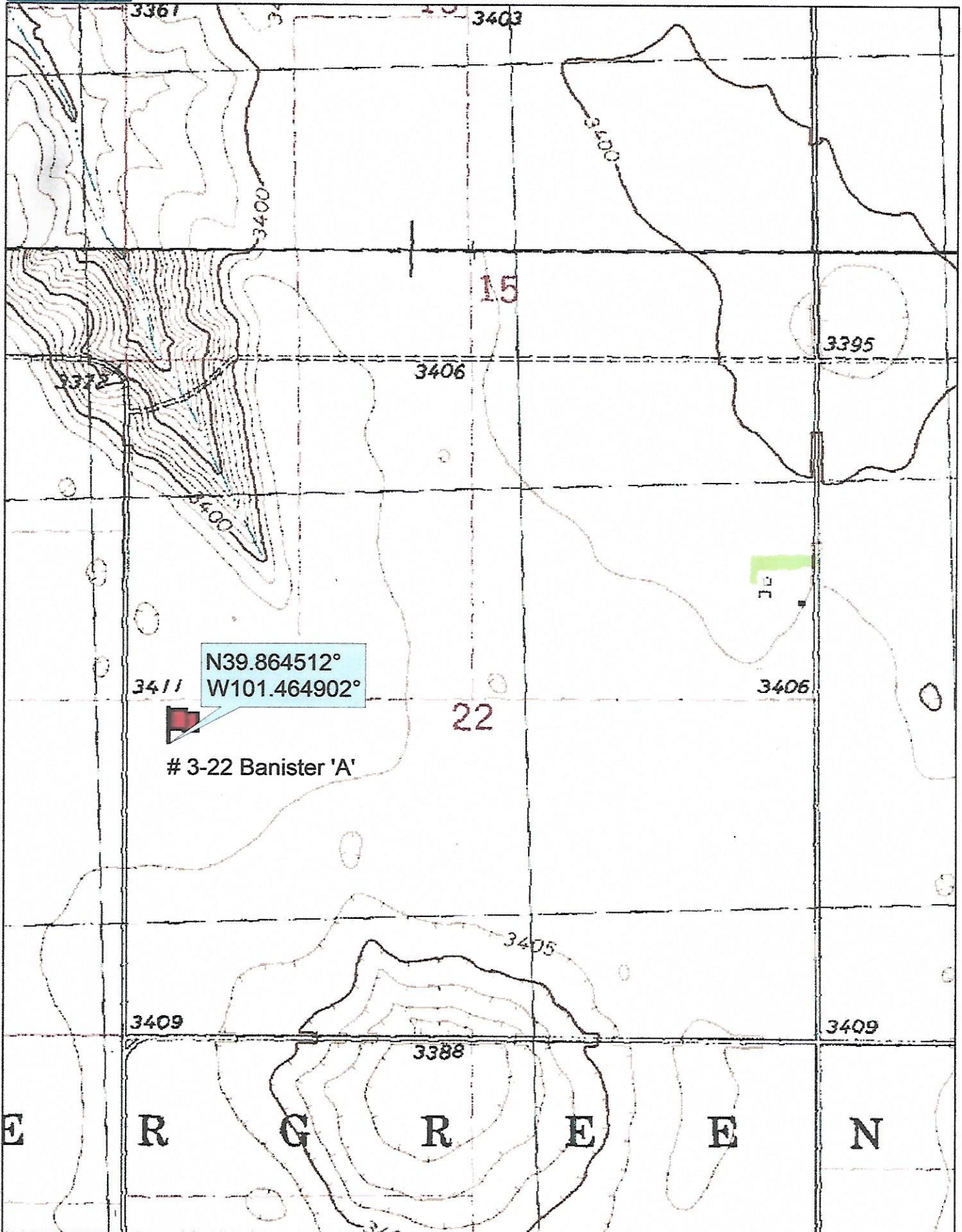
Murfin Drilling
 250 N Water
 Suite 300
 Wichita, KS. 67202

Elevation 3411 Gr.

Ordered By: Shauna

Scale 1"=1000'





N39.864512°
W101.464902°

3-22 Banister 'A'

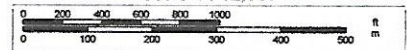
Data use subject to license.

© DeLorme. Topo North America™ 9.

www.delorme.com



Scale 1 : 12,000



1" = 1,000.0 ft

Data Zoom 13-1