

DRILL STEM TEST REPORT

Prepared For: **Palomino Petroleum Inc**

4924 SE 84th St
Newton KS 67114+8827

ATTN: Andrew Stenzel

Wu #1

17-18s-24w Ness,KS

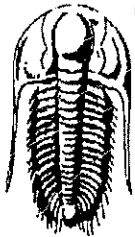
Start Date: 2019.01.16 @ 17:22:00

End Date: 2019.01.17 @ 06:27:00

Job Ticket #: 57083 DST #: 1

Trilobite Testing, Inc
1515 Commerce Parkway Hays, KS 67601
ph: 785-625-4778 fax: 785-625-5620

Printed: 2019.01.21 @ 10:37:41



**TRILOBITE
TESTING, INC**

DRILL STEM TEST REPORT

TOOL DIAGRAM

Palomino Petroleum Inc
4924 SE 84th St
New ton KS 67114+8827
ATTN: Andrew Stenzel

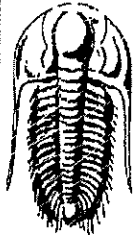
17-18s-24w Ness,KS
Wu #1
Job Ticket: 57083 DST#: 1
Test Start: 2019.01.16 @ 17:22:00

Tool Information

Drill Pipe:	Length: 4117.00 ft	Diameter: 3.82 inches	Volume: 58.36 bbl	Tool Weight: 2500.00 lb
Heavy Wt. Pipe:	Length: 0.00 ft	Diameter: 2.75 inches	Volume: 0.00 bbl	Weight set on Packer: 25000.00 lb
Drill Collar:	Length: 117.00 ft	Diameter: 2.25 inches	Volume: 0.58 bbl	Weight to Pull Loose: 65000.00 lb
			<u>Total Volume: 58.94 bbl</u>	Tool Chased ft
Drill Pipe Above KB:	23.00 ft			String Weight: Initial 62000.00 lb
Depth to Top Packer:	4238.00 ft			Final 64000.00 lb
Depth to Bottom Packer:	ft			
Interval between Packers:	82.00 ft			
Tool Length:	109.00 ft			
Number of Packers:	1	Diameter: 6.75 inches		

Tool Comments:

Tool Description	Length (ft)	Serial No.	Position	Depth (ft)	Accum. Lengths
Change Over Sub	1.00			4212.00	
Shut In Tool	5.00			4217.00	
Hydraulic tool	5.00			4222.00	
Jars	5.00			4227.00	
Safety Joint	2.00			4229.00	
Packer	5.00			4234.00	27.00 Bottom Of Top Packer
Packer	4.00			4238.00	
Stubb	1.00			4239.00	
Recorder	0.00	8018	Inside	4239.00	
Recorder	0.00	8677	Inside	4239.00	
Perforations	1.00			4240.00	
Change Over Sub	1.00			4241.00	
Drill Pipe	61.00			4302.00	
Change Over Sub	1.00			4303.00	
Perforations	14.00			4317.00	
Bullnose	3.00			4320.00	82.00 Bottom Packers & Anchor
Total Tool Length:	109.00				



TRILOBITE
TESTING, INC.

DRILL STEM TEST REPORT

FLUID SUMMARY

Palomino Petroleum Inc
4924 SE 84th St
New ton KS 67114+8827
ATTN: Andrew Stenzel

17-18s-24w Ness,KS
Wu #1
Job Ticket: 57083 DST#: 1
Test Start: 2019.01.16 @ 17:22:00

Mud and Cushion Information

Mud Type: Gel Chem	Cushion Type:	Oil API:	32 deg API
Mud Weight: 9.00 lb/gal	Cushion Length: ft	Water Salinity:	ppm
Viscosity: 57.00 sec/qt	Cushion Volume: bbl		
Water Loss: 8.76 in ³	Gas Cushion Type:		
Resistivity: ohm.m	Gas Cushion Pressure: psig		
Salinity: 7600.00 ppm			
Filter Cake: inches			

Recovery Information

Recovery Table

Length ft	Description	Volume bbl
380.00	GHMCO 20%G 30%M 50%O	4.304
190.00	GO 30%G 70%O	2.693
0.00	63' GIP 100%G	0.000

Total Length: 570.00 ft Total Volume: 6.997 bbl
 Num Fluid Samples: 0 Num Gas Bombs: 0 Serial #:
 Laboratory Name: Laboratory Location:
 Recovery Comments: 1#LCM

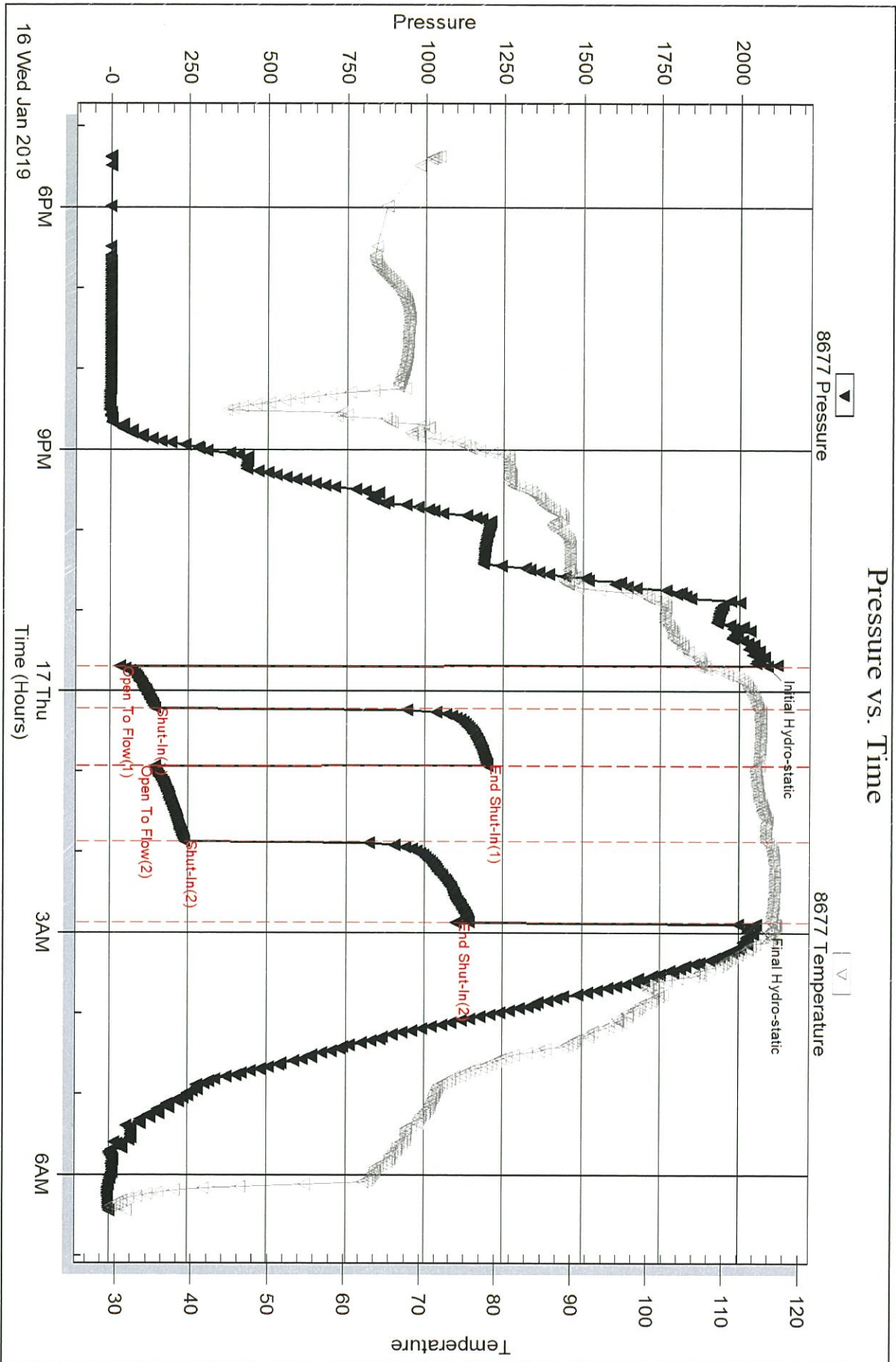
Serial #: 8677

Inside

Palomino Petroleum Inc

Wu #1

DST Test Number: 1



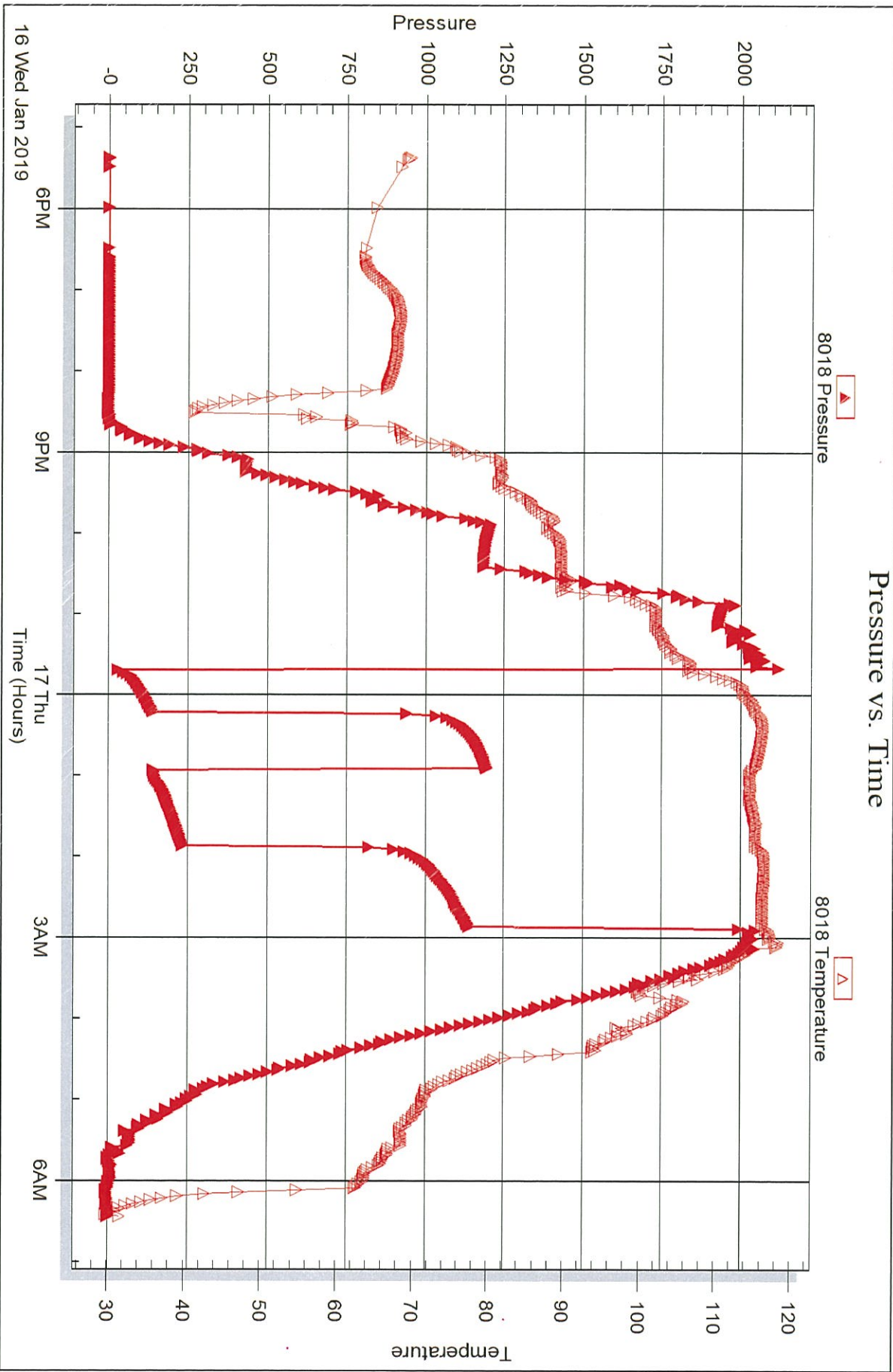
Serial #: 8018

Inside

Palomino Petroleum Inc

Wu #1

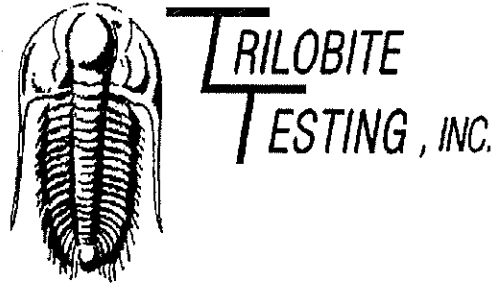
DST Test Number: 1



Triobite Testing, Inc

Ref. No: 57083

Printed: 2019.01.21 @ 10:37:42



DRILL STEM TEST REPORT

Prepared For: **Palomino Petroleum Inc**

4924 SE 84th St
Newton KS 67114+8827

ATTN: Andrew Stenzel

Wu #1

17-18s-24w Ness,KS

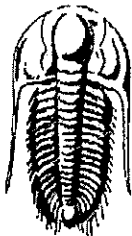
Start Date: 2019.01.17 @ 13:45:05

End Date: 2019.01.17 @ 22:33:30

Job Ticket #: DST #: 2

Trilobite Testing, Inc
1515 Commerce Parkway Hays, KS 67601
ph: 785-625-4778 fax: 785-625-5620

Printed: 2019.01.21 @ 10:35:06



**TRILOBITE
TESTING, INC.**

DRILL STEM TEST REPORT

Palomino Petroleum Inc
4924 SE 84th St
New ton KS 67114+8827
ATTN: Andrew Stenzel

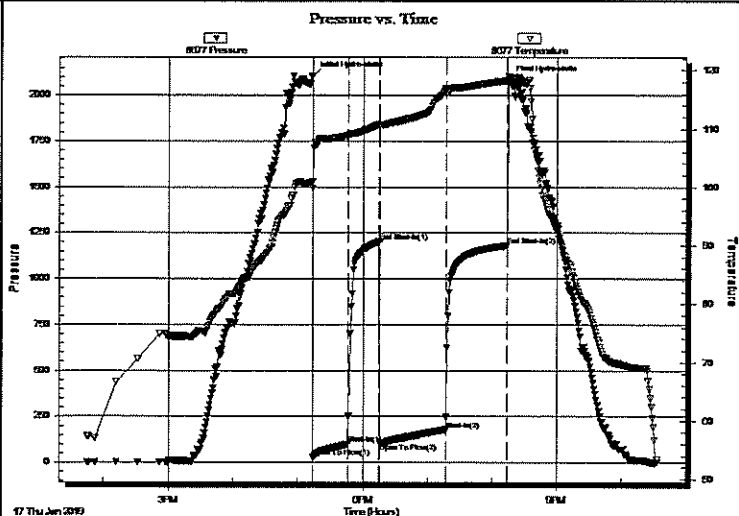
17-18s-24w Ness,KS
Wu #1
Job Ticket: DST#: 2
Test Start: 2019.01.17 @ 13:45:05

GENERAL INFORMATION:

Formation: **Miss**
Deviated: No Whipstock: ft (KB)
Time Tool Opened: 17:13:45
Time Test Ended: 22:33:30
Test Type: Conventional Bottom Hole (Reset)
Tester: Spencer J Staab
Unit No: 67
Interval: **4318.00 ft (KB) To 4328.00 ft (KB) (TVD)**
Reference Elevations: 2299.00 ft (KB)
Total Depth: 4320.00 ft (KB) (TVD) 2287.00 ft (CF)
Hole Diameter: 7.88 inches Hole Condition: Fair KB to GR/CF: 12.00 ft

Serial #: 8677 Inside
Press@RunDepth: 177.55 psig @ 4319.00 ft (KB) Capacity: 8000.00 psig
Start Date: 2019.01.17 End Date: 2019.01.17 Last Calib.: 2019.01.17
Start Time: 13:45:05 End Time: 22:33:30 Time On Btm: 2019.01.17 @ 17:13:15
Time Off Btm: 2019.01.17 @ 20:15:14

TEST COMMENT: 30 IFP BOB in 23 mins Built to 13 1/2"
30 ISI Weak blow built to 1"
60 FFP BOB in 25 min built to 21"
60 FSI Weak blow back built to 3/4"



PRESSURE SUMMARY

Time (Min.)	Pressure (psig)	Temp (deg F)	Annotation
0	2102.47	100.92	Initial Hydro-static
1	26.01	99.85	Open To Flow (1)
33	99.26	108.84	Shut-In(1)
62	1200.59	110.73	End Shut-In(1)
62	103.63	110.69	Open To Flow (2)
124	177.55	116.83	Shut-In(2)
181	1180.57	118.27	End Shut-In(2)
182	2083.69	118.95	Final Hydro-static

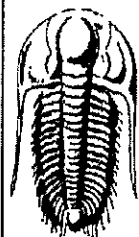
Recovery

Length (ft)	Description	Volume (bbl)
250.00	GSOCMW 10%G 5%O 65%W 20%M	2.46
160.00	GO 40%g 60%o	2.27
0.00	120' GIP	0.00

Gas Rates

	Choke (inches)	Pressure (psig)	Gas Rate (Mcf/d)

* Recovery from multiple tests



TRILOBITE
TESTING, INC.

DRILL STEM TEST REPORT

TOOL DIAGRAM

Palomino Petroleum Inc
4924 SE 84th St
New ton KS 67114+8827
ATTN: Andrew Stenzel

17-18s-24w Ness,KS
Wu #1
Job Ticket: DST#: 2
Test Start: 2019.01.17 @ 13:45:05

Tool Information

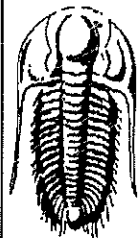
Drill Pipe:	Length: 4208.00 ft	Diameter: 3.82 inches	Volume: 59.65 bbl	Tool Weight: 2500.00 lb
Heavy Wt. Pipe:	Length: 0.00 ft	Diameter: 2.75 inches	Volume: 0.00 bbl	Weight set on Packer: 25000.00 lb
Drill Collar:	Length: 117.00 ft	Diameter: 2.25 inches	Volume: 0.58 bbl	Weight to Pull Loose: 78000.00 lb
			<u>Total Volume: 60.23 bbl</u>	Tool Chased 0.00 ft
Drill Pipe Above KB:	34.00 ft			String Weight: Initial 63000.00 lb
Depth to Top Packer:	4318.00 ft			Final 65000.00 lb
Depth to Bottom Packer:	ft			
Interval between Packers:	10.00 ft			
Tool Length:	37.00 ft			
Number of Packers:	1	Diameter: 6.75 inches		

Tool Comments:

Tool-Description

Tool-Description	Length (ft)	Serial No.	Position	Depth (ft)	Accum. Lengths
Change Over Sub	1.00			4292.00	
Shut In Tool	5.00			4297.00	
Hydraulic tool	5.00			4302.00	
Jars	5.00			4307.00	
Safety Joint	2.00			4309.00	
Packer	5.00			4314.00	27.00 Bottom Of Top Packer
Packer	4.00			4318.00	
Stubb	1.00			4319.00	
Recorder	0.00	8018	Inside	4319.00	
Recorder	0.00	8677	Inside	4319.00	
Perforations	6.00			4325.00	
Bullnose	3.00			4328.00	10.00 Bottom Packers & Anchor

Total Tool Length: 37.00



**TRILOBITE
TESTING, INC.**

DRILL STEM TEST REPORT

FLUID SUMMARY

Palomino Petroleum Inc
4924 SE 84th St
New ton KS 67114+8827
ATTN: Andrew Stenzel

17-18s-24w Ness,KS
Wu #1
Job Ticket: DST#: 2
Test Start: 2019.01.17 @ 13:45:05

Mud and Cushion Information

Mud Type: Gel Chem	Cushion Type:	Oil API: 31 deg API
Mud Weight: 9.00 lb/gal	Cushion Length: ft	Water Salinity: 48000 ppm
Viscosity: 47.00 sec/qt	Cushion Volume: bbl	
Water Loss: 9.18 in ³	Gas Cushion Type:	
Resistivity: ohm.m	Gas Cushion Pressure: psig	
Salinity: 7900.00 ppm		
Filter Cake: inches		

Recovery Information

Recovery Table

Length ft	Description	Volume bbl
250.00	GSOCMW 10%G 5%O 65%W 20%M	2.461
160.00	GO 40%g 60%o	2.268
0.00	120' GIP	0.000

Total Length: 410.00 ft Total Volume: 4.729 bbl
 Num Fluid Samples: 0 Num Gas Bombs: 0 Serial #:
 Laboratory Name: Laboratory Location:
 Recovery Comments: .359 @ 29 deg

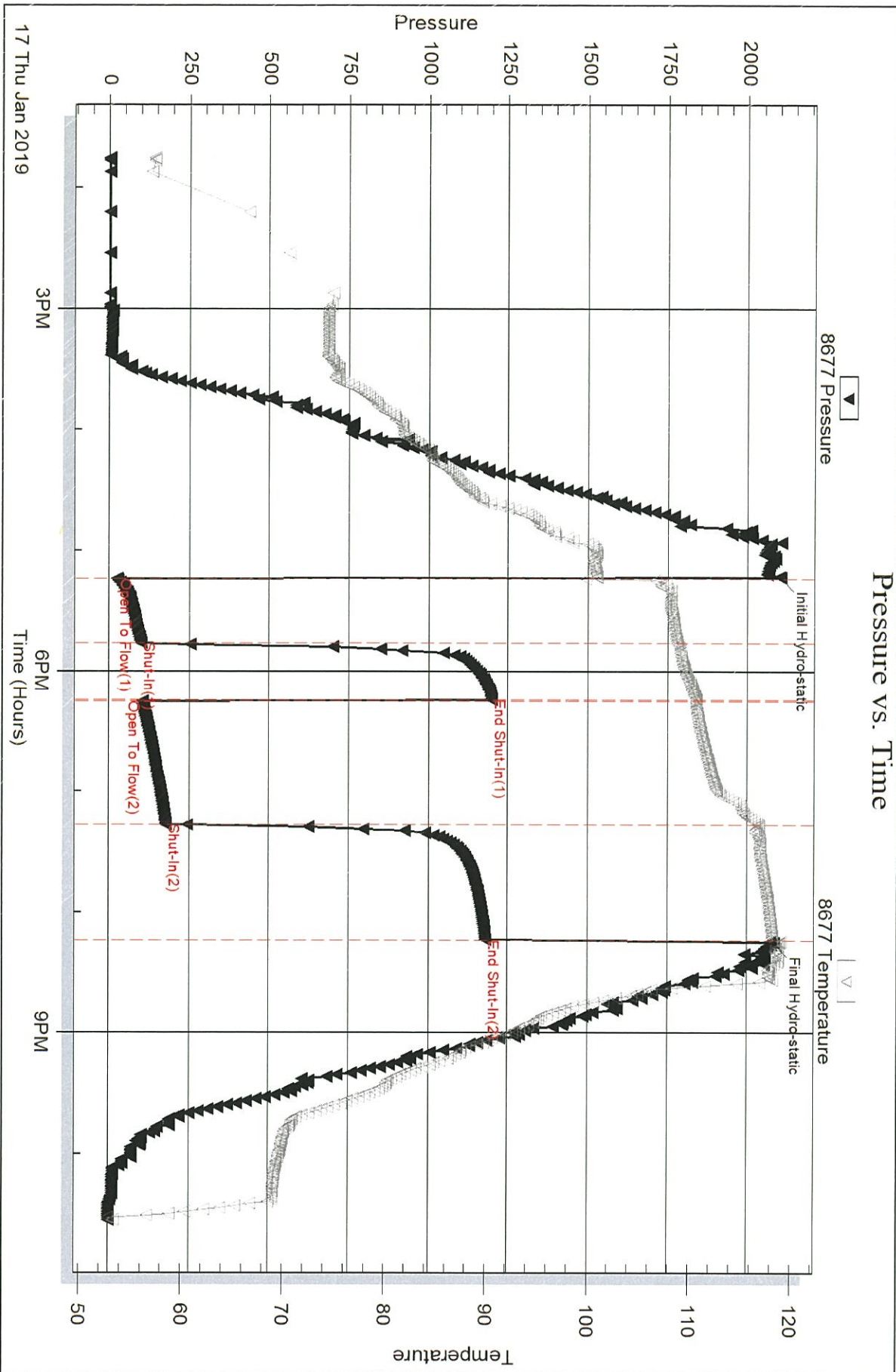
Serial #: 8677

Inside

Palomino Petroleum Inc

Wu #1

DST Test Number: 2



Triobite Testing, Inc

Ref. No:

Printed: 2019.01.21 @ 10:35:07

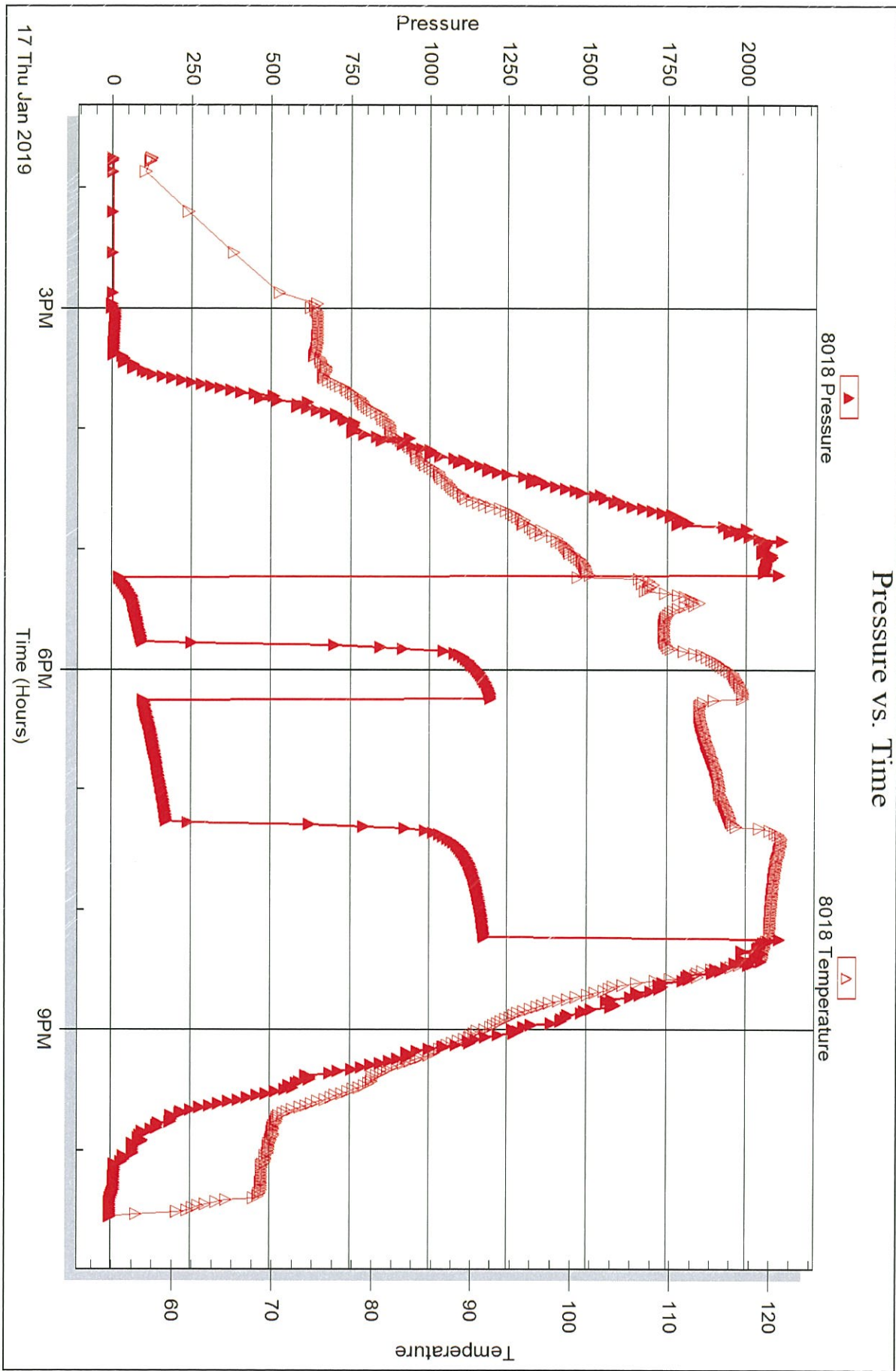
Serial #: 8018

Inside

Palomino Petroleum Inc

Wu #1

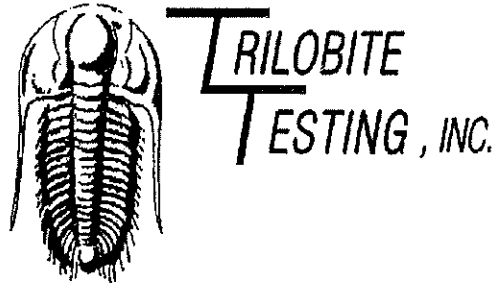
DST Test Number: 2



Tribolite Testing, Inc

Ref. No:

Printed: 2019.01.21 @ 10:35:07



DRILL STEM TEST REPORT

Prepared For: **Palomino Petroleum Inc**

4924 SE 84th St
Newton KS 67114+8827

ATTN: Andrew Stenzel

Wu #1

17-18s-24w Ness,KS

Start Date: 2019.01.18 @ 13:35:00

End Date: 2019.01.18 @ 22:01:00

Job Ticket #: 57085 DST #: 3

Trilobite Testing, Inc
1515 Commerce Parkway Hays, KS 67601
ph: 785-625-4778 fax: 785-625-5620

Printed: 2019.01.21 @ 10:34:28



**TRILOBITE
TESTING, INC.**

DRILL STEM TEST REPORT

TOOL DIAGRAM

Palomino Petroleum Inc
4924 SE 84th St
New ton KS 67114+8827

ATTN: Andrew Stenzel

17-18s-24w Ness,KS

Wu #1
Job Ticket: 57085 DST#: 3
Test Start: 2019.01.18 @ 13:35:00

Tool Information

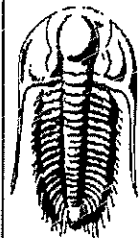
Drill Pipe:	Length: 4080.00 ft	Diameter: 3.82 inches	Volume: 57.84 bbl	Tool Weight: 2500.00 lb
Heavy Wt. Pipe:	Length: 0.00 ft	Diameter: 2.75 inches	Volume: 0.00 bbl	Weight set on Packer: 25000.00 lb
Drill Collar:	Length: 117.00 ft	Diameter: 2.25 inches	Volume: 0.58 bbl	Weight to Pull Loose: 72000.00 lb
			<u>Total Volume: 58.42 bbl</u>	Tool Chased ft
Drill Pipe Above KB:	34.00 ft			String Weight: Initial 64000.00 lb
Depth to Top Packer:	4190.00 ft			Final 65000.00 lb
Depth to Bottom Packer:	ft			
Interval between Packers:	242.00 ft			
Tool Length:	269.00 ft			
Number of Packers:	1	Diameter: 6.75 inches		

Tool Comments:

Tool Description

Tool Description	Length (ft)	Serial No.	Position	Depth (ft)	Accum. Lengths
Change Over Sub	1.00			4164.00	
Shut In Tool	5.00			4169.00	
Hydraulic tool	5.00			4174.00	
Jars	5.00			4179.00	
Safety Joint	2.00			4181.00	
Packer	5.00			4186.00	27.00 Bottom Of Top Packer
Packer	4.00			4190.00	
Stubb	1.00			4191.00	
Change Over Sub	1.00			4192.00	
Recorder	0.00	8018	Inside	4192.00	
Recorder	0.00	8677	Inside	4192.00	
Drill Pipe	32.00			4224.00	
Change Over Sub	1.00			4225.00	
Perforations	17.00			4242.00	
blank Off Sub	1.00			4243.00	
packer	5.00			4248.00	
Perforations	23.00			4271.00	
Change Over Sub	1.00			4272.00	
Recorder	0.00	8675	Below	4272.00	
Drill Pipe	156.00			4428.00	
Change Over Sub	1.00			4429.00	
Bullnose	3.00			4432.00	242.00 Bottom Packers & Anchor

Total Tool Length: 269.00



**TRILOBITE
TESTING, INC.**

DRILL STEM TEST REPORT

FLUID SUMMARY

Palomino Petroleum Inc
4924 SE 84th St
New ton KS 67114+8827
ATTN: Andrew Stenzel

17-18s-24w Ness,KS
Wu #1
Job Ticket: 57085 DST#: 3
Test Start: 2019.01.18 @ 13:35:00

Mud and Cushion Information

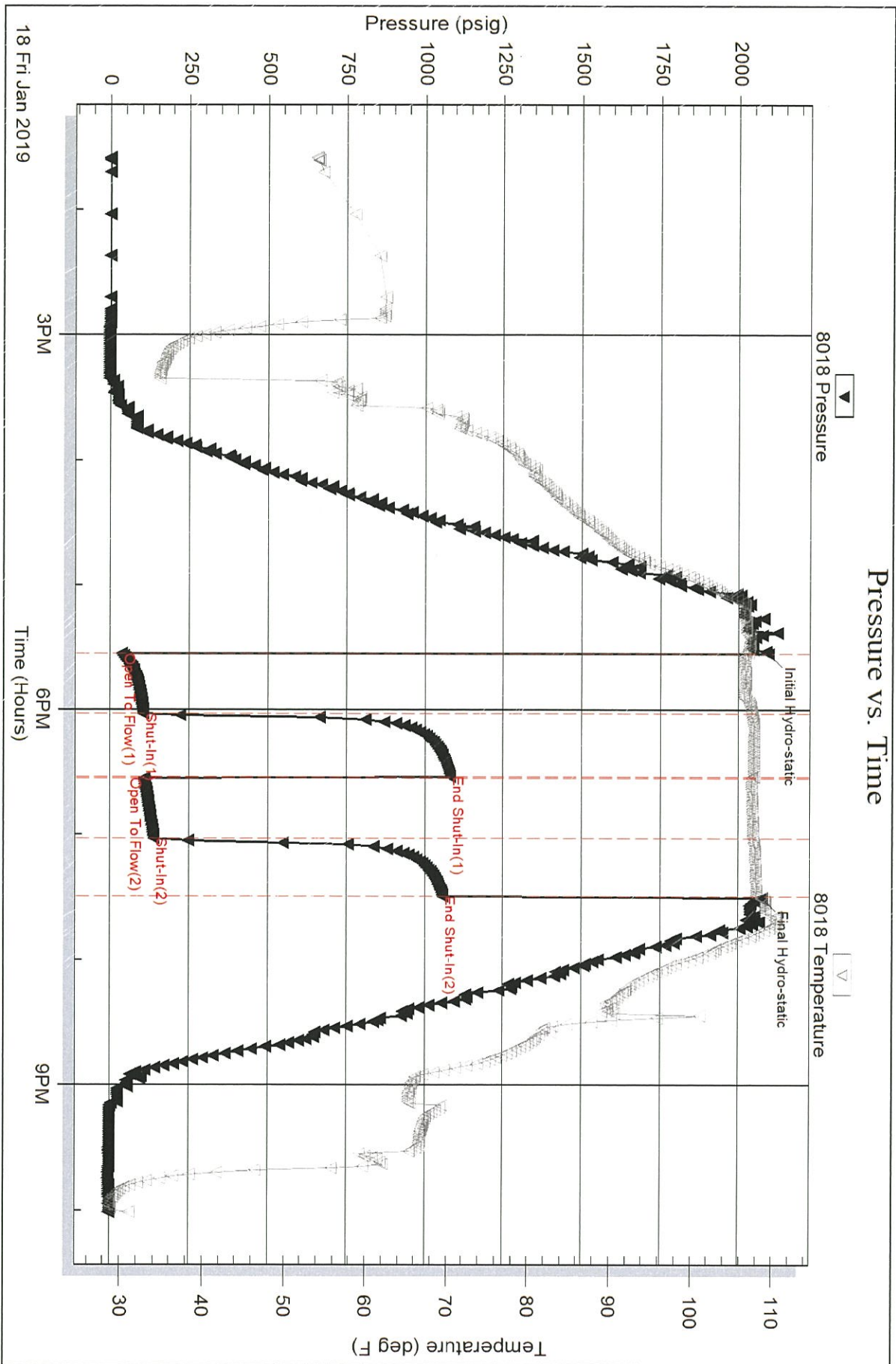
Mud Type: Gel Chem	Cushion Type:	Oil API:	deg API
Mud Weight: 9.00 lb/gal	Cushion Length: ft	Water Salinity:	65000 ppm
Viscosity: 52.00 sec/qt	Cushion Volume: bbl		
Water Loss: 9.99 in ³	Gas Cushion Type:		
Resistivity: ohm.m	Gas Cushion Pressure: psig		
Salinity: 8200.00 ppm			
Filter Cake: inches			

Recovery Information

Recovery Table

Length ft	Description	Volume bbl
120.00	Water 100%W	0.618
60.00	MW 40% M 60%W	0.851
10.00	MO 50%M 50%O	0.142

Total Length: 190.00 ft Total Volume: 1.611 bbl
 Num Fluid Samples: 0 Num Gas Bombs: 0 Serial #:
 Laboratory Name: Laboratory Location:
 Recovery Comments: 1#LCM
 RW=.334@25F



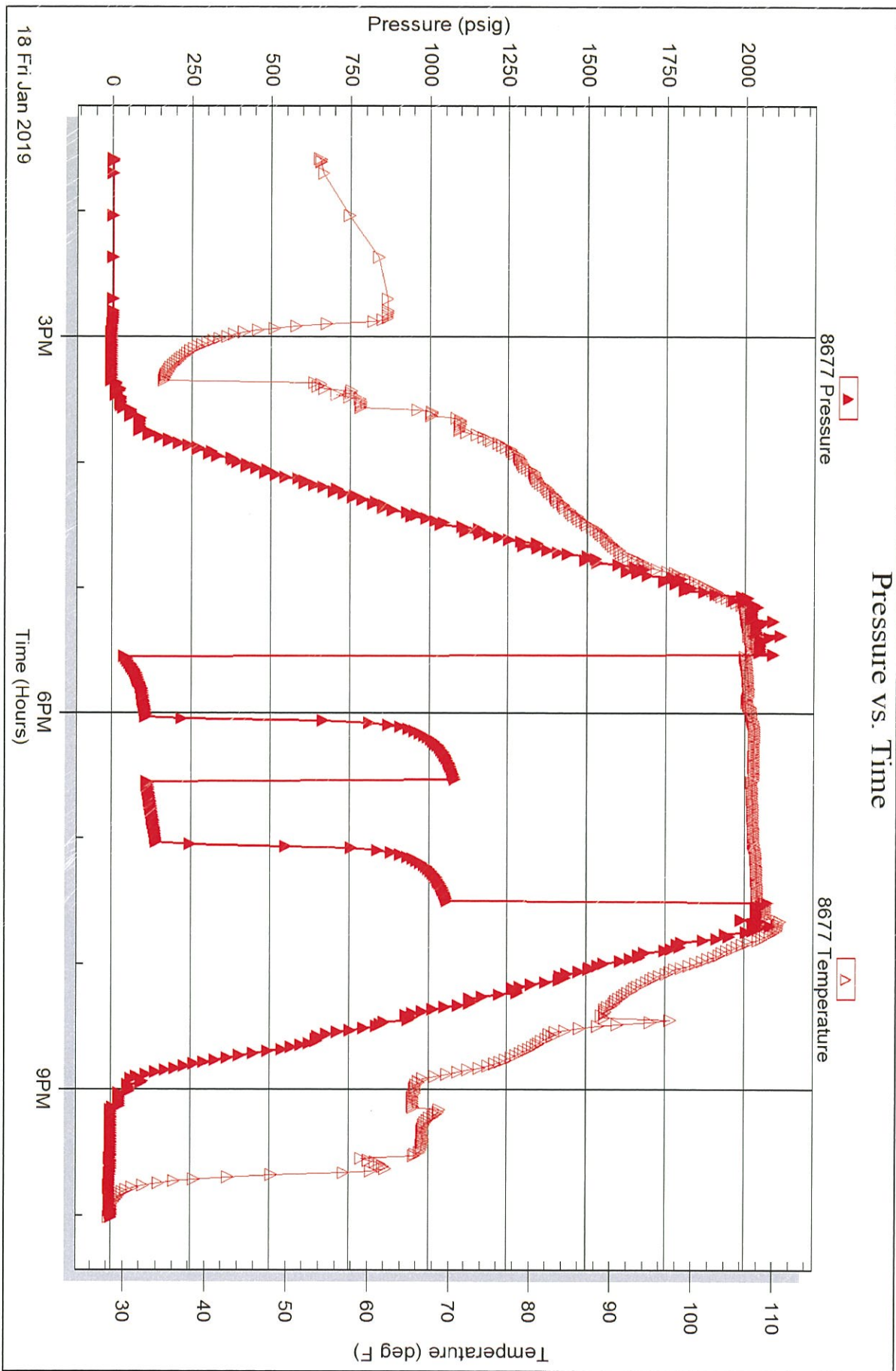
Serial #: 8677

Inside

Palomino Petroleum Inc

WU #1

DST Test Number: 3



Triobite Testing, Inc

Ref. No: 57085

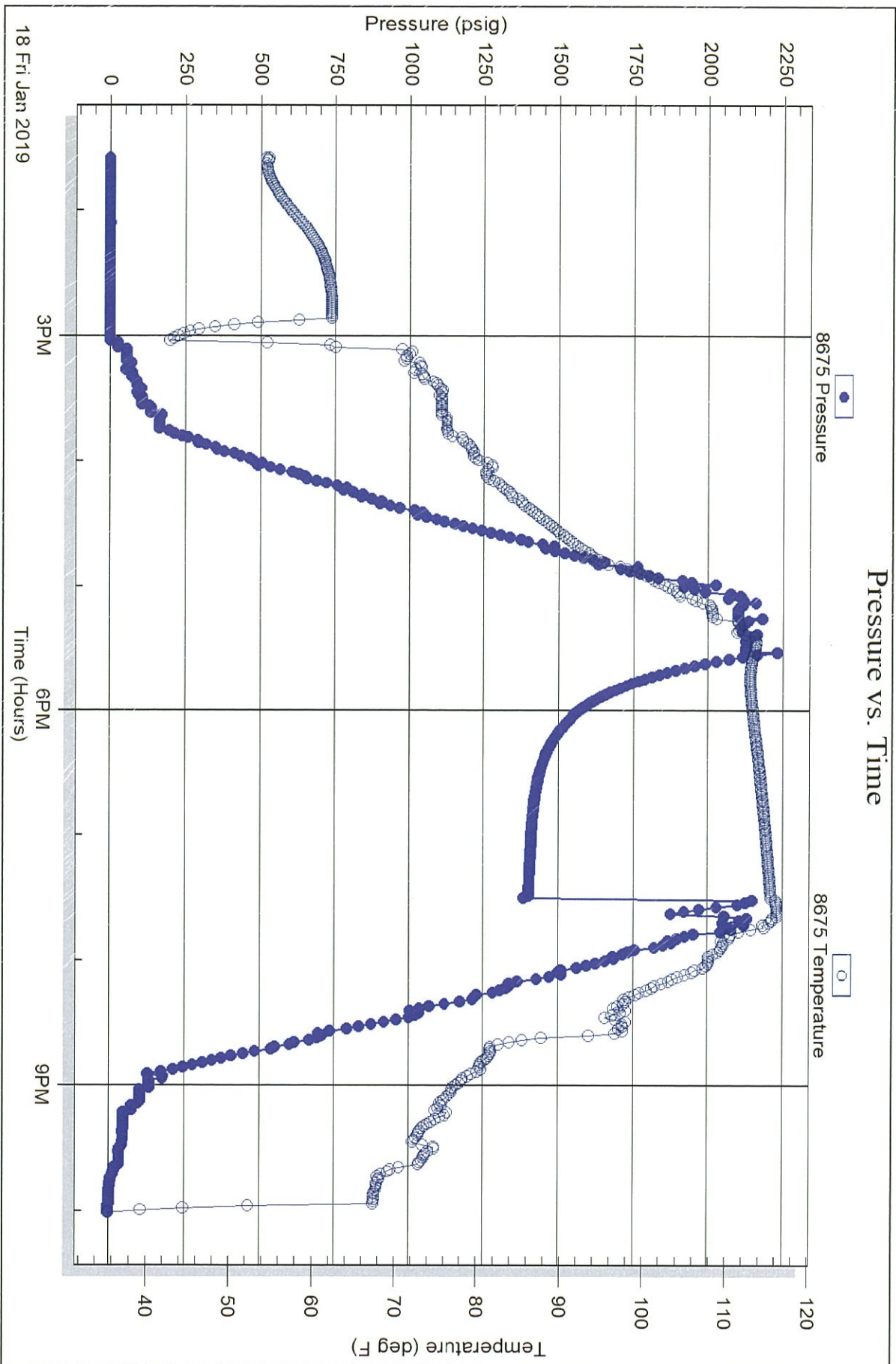
Printed: 2019.01.21 @ 10:34:29

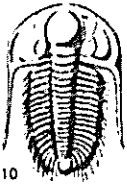
Serial #: 8675

Below (Stratton) Petroleum Inc

Well #1

DST Test Number: 3





TRILOBITE TESTING INC.

1515 Commerce Parkway • Hays, Kansas 67601

Test Ticket

NO. 57083

Well Name & No. 2021 #1 Test No. 1 Date 01/16/2019
 Company Talomo Petroleum Inc Elevation 2799 KB 2387 GL
 Address 4924 SE 84th St Newton KS 67114-1827
 Co. Rep / Geo. Andrew Stempel Rig 2021 #22
 Location: Sec. 17 Twp. 18S Rge. 24W Co. Neos State KS

Interval Tested 4238' - 4320' Zone Tested Mississippi
 Anchor Length 82' Drill Pipe Run 4118' Mud Wt. 9.2
 Top Packer Depth 4233' Drill Collars Run 117' Vis 57
 Bottom Packer Depth 4238' Wt. Pipe Run - WL 8.8
 Total Depth 4320' Chlorides 7600 ppm System LCM 1H

Blow Description 77- BOPB 14 mins; Built to 21"
75A- Weak; Built to 1/4"
77- BOPB 16 mins; Built to 31"
75A- Weak; Built to 4"

Rec	Feet of	%gas	%oil	%water	%mud
<u>350'</u>	<u>TRMCP</u>	<u>20</u>	<u>50</u>	<u>30</u>	
<u>190'</u>	<u>10'</u>	<u>30</u>	<u>70</u>		
<u>65'</u>	<u>GIP</u>	<u>100</u>			

Rec Total 570' BHT 116° Gravity 31° API RW - @ - °F Chlorides - ppm

(A) Initial Hydrostatic <u>2088</u>	<input checked="" type="checkbox"/> Test <u>1150</u>	T-On Location <u>16:35</u>
(B) First Initial Flow <u>32</u>	<input checked="" type="checkbox"/> Jars <u>250</u>	T-Started <u>17:22</u>
(C) First Final Flow <u>143</u>	<input checked="" type="checkbox"/> Safety Joint <u>75</u>	T-Open <u>23:41</u>
(D) Initial Shut-In <u>1199</u>	<input type="checkbox"/> Circ Sub	T-Pulled <u>02:41</u>
(E) Second Initial Flow <u>144</u>	<input checked="" type="checkbox"/> Hourly Standby <u>x4 3h 240</u>	T-Out <u>06:26</u>
(F) Second Final Flow <u>236</u>	<input checked="" type="checkbox"/> Mileage <u>13027 104rt</u>	Comments <u></u>
(G) Final Shut-In <u>1101</u>	<input type="checkbox"/> Sampler	
(H) Final Hydrostatic <u>2053</u>	<input type="checkbox"/> Straddle	<input type="checkbox"/> Ruined Shale Packer
	<input type="checkbox"/> Shale Packer	<input type="checkbox"/> Ruined Packer
	<input type="checkbox"/> Extra Packer	<input type="checkbox"/> Extra Copies
	<input type="checkbox"/> Extra Recorder	Sub Total <u>0</u>
	<input type="checkbox"/> Day Standby	Total <u>1819</u>
	<input type="checkbox"/> Accessibility	MP/DST Disc't <u></u>
	Sub Total <u>1819</u>	

Initial Open 30
 Initial Shut-In 30
 Final Flow 60
 Final Shut-In 60

Approved By _____ Our Representative Spencer J. Jacob Thanks

Trilobite Testing Inc. shall not be liable for damaged of any kind of the property or personnel of the one for whom a test is made, or for any loss, suffered or sustained, directly or indirectly, through the use of its equipment, or its statements or opinion concerning the results of any test, tools lost or damaged in the hole shall be paid for at cost by the party for whom the test is made.

700 200 mch



TRILOBITE TESTING INC.

1515 Commerce Parkway • Hays, Kansas 67601

Test Ticket

NO. 57086

Well Name & No. Wu #1 Test No. 2 Date 01/17/2019
 Company Talonia Petroleum Inc Elevation 2299 KB 8287 GL
 Address 4924 SE 84th St Newton KS 67114 + 8327
 Co. Rep / Geo. Andrew Stengel Rig 2020-#22
 Location: Sec. 17 Twp. 18N Rge. 24E Co. 9SS State KS

Interval Tested 4318' - 4328' Zone Tested Mississippi
 Anchor Length 10' Drill Pipe Run 4208' Mud Wt. 9.4
 Top Packer Depth 4313' Drill Collars Run 117' Vis 47
 Bottom Packer Depth 4318' Wt. Pipe Run - WL 9.2
 Total Depth 4328' Chlorides 7900 ppm System LCM 1H

Blow Description 17- BOB 23 mins; Built to 13 1/2"
1st Weak; Built to 1"
47- BOB 25 mins; Built to 21"
7st Weak; Built to 3/4"

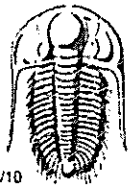
Rec	Feet of	%gas	%oil	%water	%mud
<u>250'</u>	<u>GOC 911 LI</u>	<u>10</u>	<u>5</u>	<u>65</u>	<u>20</u>
<u>166'</u>	<u>GO</u>	<u>40</u>	<u>60</u>		
<u>1</u>	<u>120' GIV</u>				

Rec Total 410' BHT 1180 Gravity 310 API RW 359 @ 28 °F Chlorides 48000 ppm

(A) Initial Hydrostatic 2100 Test 1150 T-On Location 13:05
 (B) First Initial Flow 26 Jars 250 T-Started 13:45
 (C) First Final Flow 99 Safety Joint 75 T-Open 17:09
 (D) Initial Shut-In 1200 Circ Sub _____ T-Pulled 20:09
 (E) Second Initial Flow 103 Hourly Standby _____ T-Out 22:28
 (F) Second Final Flow 177 Mileage 130R7 104 Comments _____
 (G) Final Shut-In 1180 Sampler _____
 (H) Final Hydrostatic 2090 Straddle _____ Ruined Shale Packer _____
 Shale Packer _____ Ruined Packer _____
 Extra Packer _____ Extra Copies _____
 Extra Recorder _____ Sub Total 0
 Day Standby _____ Total 1819
 Accessibility _____ MP/DST Disc't _____

Initial Open 30
 Initial Shut-In 30
 Final Flow 60
 Final Shut-In 60
 Sub Total 1819

Approved By _____ Our Representative James J. Grab - Leno
 Trilobite Testing Inc. shall not be liable for damaged of any kind of the property or personnel of the one for whom a test is made, or for any loss suffered or sustained, directly or indirectly, through the use of its equipment, or its statements or opinion concerning the results of any test, tools lost or damaged in the hole shall be paid for at cost by the party for whom the test is made.
 700-719-1111



TRILOBITE TESTING INC.

1515 Commerce Parkway • Hays, Kansas 67601

Test Ticket

NO. 57085

Well Name & No. Wu #1 Test No. 3 Date 01/18/2019
 Company Palomares Petroleum Inc Elevation 2299 KB 2287 GL
 Address 4924 SE 84th St Newton KS 67114 + 5527
 Co. Rep / Geo. Andrew Stempel Rig 209W #30
 Location: Sec. 17 Twp. 18A Rge. 24w Co. Miss State Ks

Interval Tested 4190 - 4245' Zone Tested H. Scott
 Anchor Length 55' ca. 1 = 155' Drill Pipe Run 4080' Mud Wt. 9.2
 Top Packer Depth 4190 Drill Collars Run 117' Vis 52
 Bottom Packer Depth 4245' Wt. Pipe Run - WL 10.0
 Total Depth 4430' Chlorides 5200 ppm System LCM #

Blow Description: 17' Weak; Built to 7'
18' No Return
27' Weak; Built to 5 1/2"
35' No Return

Rec	Feet of	%gas	%oil	%water	%mud
120'	W			100%	
60'	MW			60%	40%
10'	MC		50%		50%

Rec Total 190' BHT 1083 Gravity - API RW 534@ 25° F Chlorides 5200 ppm

(A) Initial Hydrostatic 2095 Test 1150 T-On Location 12:35
 (B) First Initial Flow 37 Jars 250 T-Started 13:35
 (C) First Final Flow 105 Safety Joint 75 T-Open 17:30
 (D) Initial Shut-In 1083 Circ Sub _____ T-Pulled 19:30
 (E) Second Initial Flow 108 Hourly Standby _____ T-Out 21:59
 (F) Second Final Flow 138 Mileage 13027 104 Comments _____
 (G) Final Shut-In 1057 Sampler _____
 (H) Final Hydrostatic 2075 Straddle 600 Ruined Shale Packer _____
 Shale Packer 250 Ruined Packer _____
 Initial Open 30 Extra Packer _____ Extra Copies _____
 Initial Shut-In 30 Extra Recorder _____ Sub Total 0
 Final Flow 30 Day Standby _____ Total 2429
 Final Shut-In 30 Accessibility _____ MP/DST Disc't _____
 Sub Total 2429

Approved By _____ Our Representative James J. Smith Thanks
 Trilobite Testing Inc. shall not be liable for damaged of any kind of the property or personnel of the one for whom a test is made, or for any loss suffered or sustained, directly or indirectly, through the use of its equipment, or its statements or opinion concerning the results of any test, tools lost or damaged in the hole shall be paid for at cost by the party for whom the test is made.

780-209-1156