

Sean Deenihan

Petroleum Geologist

GEOLOGIST'S REPORT DRILLING TIME AND SAMPLE LOG

COMPANY Palomino Petroleum, Inc.
 LEASE Rocking R Farms #3
 FIELD Wildcat
 LOCATION 2164' FNL & 702' FEL
 SEC 16 TWSP 20 S RGE 34 W
 COUNTY Scott STATE Kansas
 CONTRACTOR WW Drilling Rig #2
 SPUD 1/13/19 COMP 1/24/19
 RTD 4960' LTD 4960'
 MUD UP _____ TYPE MUD Chemical

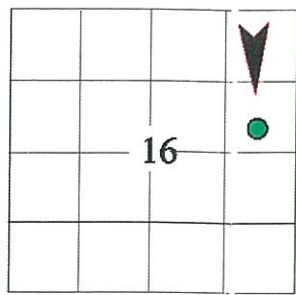
ELEVATIONS
 KB 3082'
 DF _____
 GL 3077'
 Measurements Are All
 From Kelly Bushing

CASING
 CONDUCTOR _____
 SURFACE 8-5/8" at 219'
 PRODUCTION 5.5" @ 4958

ELECTRICAL SURVEYS
Pioneer
CND/DIL/MIC

SAMPLES SAVED FROM 3600' TO RTD
 DRILLING TIME KEPT FROM 3600' TO RTD
 SAMPLES EXAMINED FROM 3600' TO RTD
 GEOLOGICAL SUPERVISION FROM 3650'
 REFERENCE WELL _____

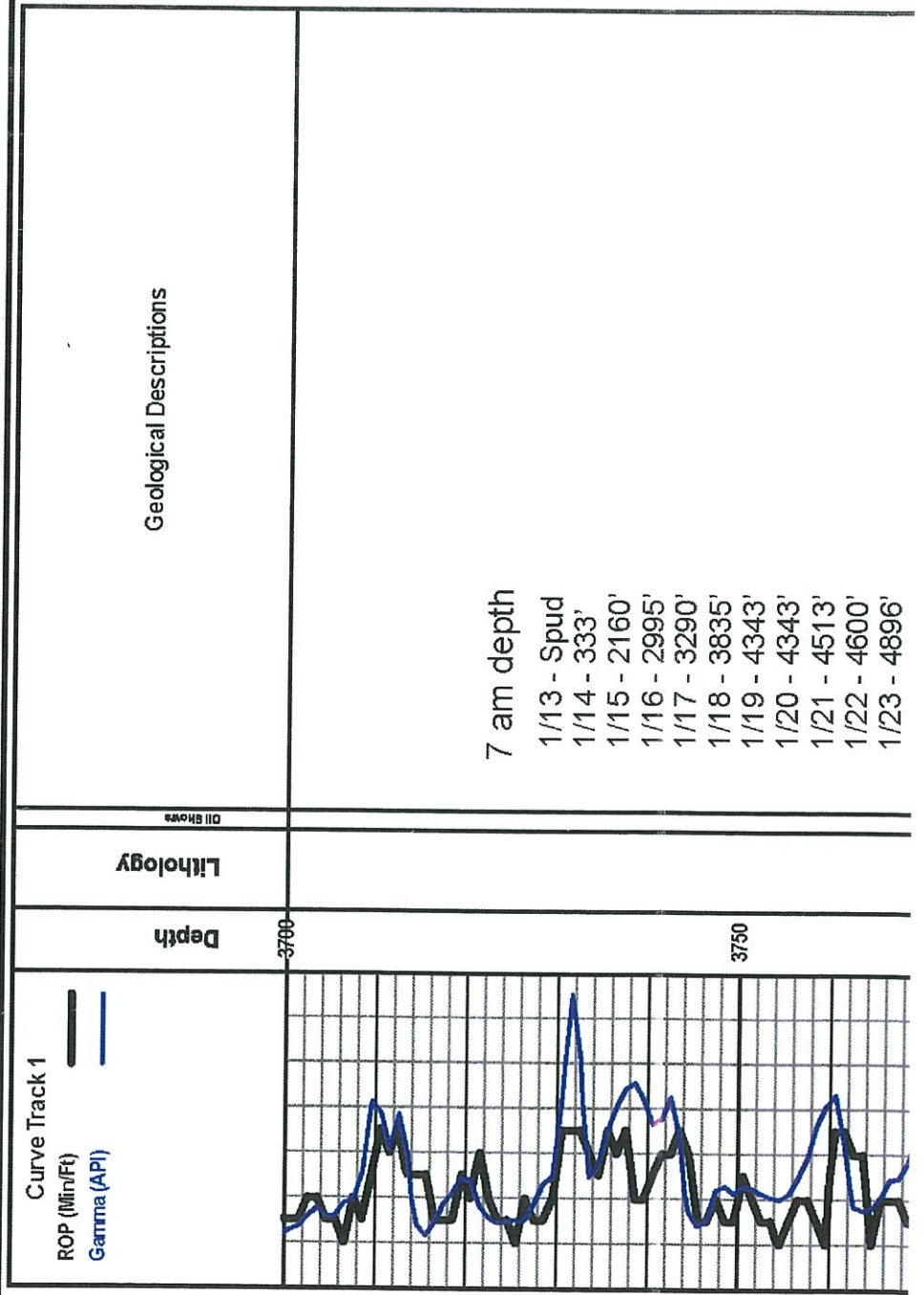
Formation	Sample Tops	E-log Tops	Struct Pos.
B/Anhydrite		2270 (+812)	
Heebner Sh.		3946 (-864)	
Lansing		3994 (-912)	
Stark		4306 (-1224)	
BKC		4440 (-1358)	
Morrow SSt		4858 (-1776)	
Mississippi		4877 (-1795)	



REMARKS Based on sample, log, and DST analysis, the Rocking R Farms #3 will be further evaluated through production casing.

Respectfully Submitted,

Sean P. Deenihan



1/17 - 3290'
1/18 - 3835'
1/19 - 4343'
1/20 - 4343'
1/21 - 4513'
1/22 - 4600'
1/23 - 4896'
1/24 - 4960' TD

Sh., dk gy, blk

Ls., wh, gy, vf gr, sdy, sme chlkly, no show

Sh., gy, silty

Sh., gy, dk gy, sft, gummy

Ls., lt tr, vf gr, fr intgran Por, barren, no odr,

Ls., crm, fos, vf gr, drse, sme fresh gy Chk, p intgran Por, no odr

Ls., wh, crm, occ chlkly, p-f gr, Fos - Fus & od, p-occ fr intfos Por, no odr, dull fluor

Heebner Sh. 3946 (-864)

Sh., gy, dk gy, blk

Ls., tn, gy, vf gr, drse, p intgran Por, p intfos Por, firm, no show

Ls., crm, vf gr, p intgran Por, no show

Sh., gy

Lansing 3994 (-912)

Ls., crm, vf gr, p intgran Por, lr Ool, firm, no show

3750

3800

3850

3900

3950

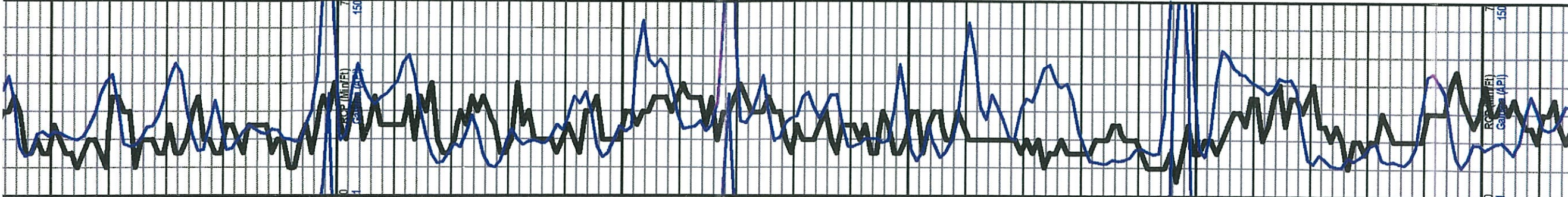
4000

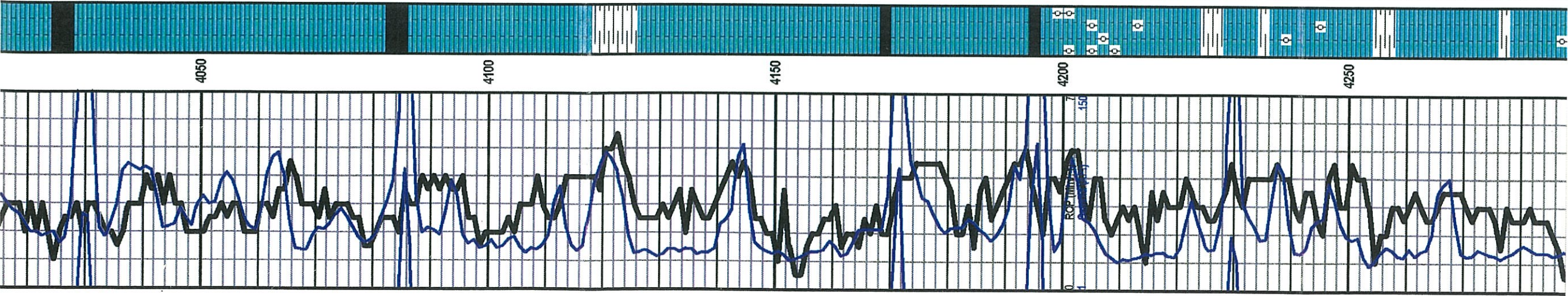
ROP (Min FE)

Case (Min FE)

ROP (Min FE)

Case (Min FE)





4050

4100

4150

4200

4250

Ls., crm, f gr, fos, p-occ fr intgran Por, sme chlkly, no show

Ls., crm, vf gr, P intgran Por, no show

Ls., crm, vf gr, fos, re-xd, dnse, no show

Ls., wh, gy, v chlkly, soft

Ls., crm, vf gr, fos, hd

Sh., dk gy-blk

Ls., crm, vf gr; tr Ool., fos, p intgran Por, no show, gassy odr, dull fluor

Ls., crm, xf-vf gr, hd

Sh., dk gy, silty, sme gummy

Ls., crm, vf gr; p intgran Por, re-xd, firm, no show

Ls., wh, v chlkly IP, mostly dnse, sing, vf gr; p intgran Por, no show

Ls., wh, chlkly, vsft, gummy

Ls., wh, gy, v chlkly, p intgran Por, no show

Muncie Creek 4194 (-1112)

Ls., tn, crm, Ool., p-gd oom Por, barren, abd sft chlkly Ls., no show

Ls., crm, gy, Ool IP, p-fr oom Por, hd, sme chlkly, fi, no show

Ls., crm, gy, dnse, sil chlkly, firm, no odr

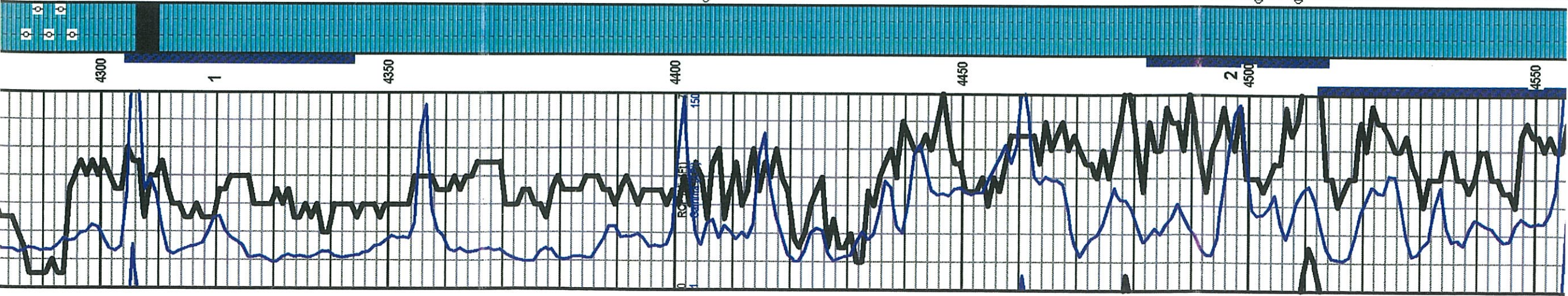
Ls., crm, vf gr; p intgran Por, sme Ool, dnse, p intfos Por, no show

Ls., crm, vf gr; p intgran Por, sil chlkly, fos, no show

Ls., wh, lt gy, v chlkly IP, p intgran Por, sme blk O strn, no odr;

Ls., wh-lt gy, vf gr, fos, sil chlkly, pred dnse, sme fresh Cht, no show

DST #1
 4306' - 4343'
 15-30-15-30"
 IF: BOB 2.5"
 No BB
 FF: 3.5"
 No BB
 Rec: 540' MCW,
 940 MCW w/ Oil
 Show



Ls., crm, fr-gd Oom Por; fin, barren, no show

Ls., gy, vf gr, hd

Stark Sh. 4306 (-1224)

Ls., wh-gy, vf gr, hd, inc. Pyr, sli cherty- fresh, gy, fos, no show

Ls., lt gy, vf gr, dnse, p vis Por, sme chiky, wh Ls., soft, no show

Ls., crm, tn, gy, vf gr, p intgran Por, abd fresh, gy, Cht, NVP, no odr

Ls., gy, tn, dk gy, vf gr, p intgran Por; fos, dnse, hd, no show

Sl., gy, gm, soft

Ls., gy, vf gr, p intgran Por, dnse, ir fos, Pyr, no show

Ls., tn, iriso vug Por, dnse, PSFO - brn-dk brn, ft odr

Ls., tn, vf gr; fr intgran por; fin, PSFO- lt brn, fluor

Ls., wh, chiky, barren

Ls., gy, vf gr, vhd, no show

Ls., wh, gy, vf gr, sli fos, sli chiky, pred dnse, p intgran Por, no show, no odr

Ls., a, a w/ inc. chert

Ls., brn, tn, fos x' gr, p intgran Por, vhd, no show, no odr

Ls., crm, Ool, p-frintool Por, FSFO - dk brn, gd odr, fluor

Ls., crm, fos, dnse, p intfos Por, PSFO, gd odr

Ls., tn, brn, Ool, re-xl, NVP, hd, no odr; no show

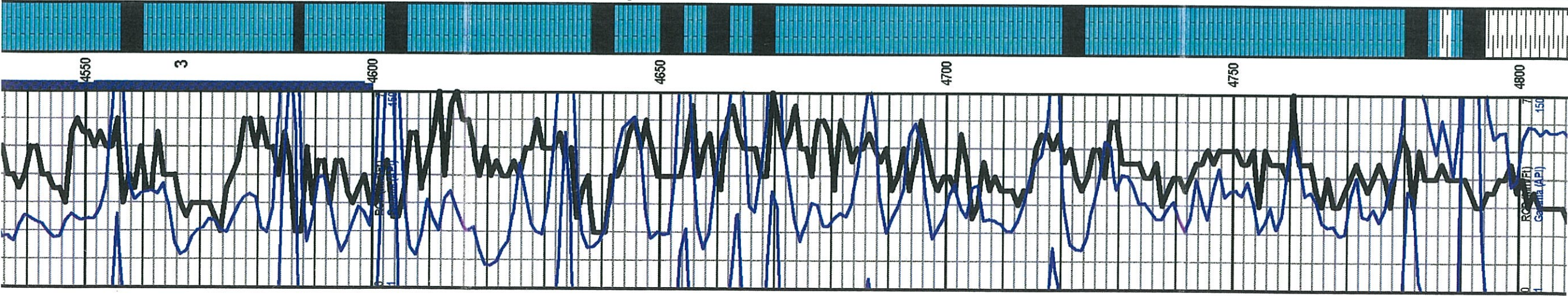
Ls., tn, Ool, NVP, no show

Ls., gy, tn, x'-vf gr, dnse, hd

Show
IFP: 130-440#
FFP: 461-689#
SIP: 1068-1061#

DST #2
4483' - 4513'
30-30-60-60"
IF: BOB 8.5 min
2" BB
FF: BOB 8 min
7" BB
Rec: 1750' GIP,
180' SGCO,
(3%G, 97%O), 20'
SGMCO (5G, 74%O
21M), 120' SGOCM
(6%G, 42%O, 52M)
IFP: 20-71#
FFP: 76-134#
SIP: 1026-935#

DST #3
4512' - 4600'
30-30-30-30"



Ls., tn, Col, NVP, no show

Ls., gy, tn, xf-vf gr, dnse, hd

Ls., wh, cm, vf gr, fos, p intgran Por, vug, firm, PSFO - ft odr; fluor

Sh., blk

Ls., gy, fos, vf gr; firm hd, p intgran Por, dnse, sil chiky, Pyr, no show

Ls., tn, bm, vf gr, fos, p intfos Por, iso vug Por, dnse, no show

Ls., tn, gy, vf gr, dnse, p intgran Por; no show

Ls., aa

Ls., gy, vf gr, vug, PSFO-dk bm, no odr

Sh., gy

Ls., wh, gy, xf gr, fos, NVP, hd

Sh., gy, dk gy, blk

Sh., gy, yellow, sft, gummy

Ls., gy, xf gr, dnse, no show

Siltstone, cl-gr, fi, fr-gd intgran Por, sme unconsolidated SS in tray, no odr, no show

Sh., gy, dk gy, gm, silty

Ls., wh, lt gy, cm, vf gr, fos, sil chiky, pred firm, no show

Sh., gy, dk gy, gummy, soft

Ls., wh, gm, xf-vf gr, dnse, sil dotc, sil dk bm, O str, no odr

Ss., cl-wh, lt gy, vf gr, rd-sbrd, well sorted, gd intgran Por, barren, no odr, no show

Ls., cm, lt gm, gy, vf gr, dnse, suc-dnse, vhd, no odr

Ft. Scott 4606 (-1524)

Morrow Sh. 4790 (-1708)

DST #3
 4512' - 4600'
 30-30-30-30"
 IF: 1"
 NO BB
 FF: Surface
 NO BB
 Rec: 65' SOCM,
 (1%O, 98%M)
 IFP: 26-44#
 FFP: 46-59#
 SIP: 1188-1002#

4650

3

4600

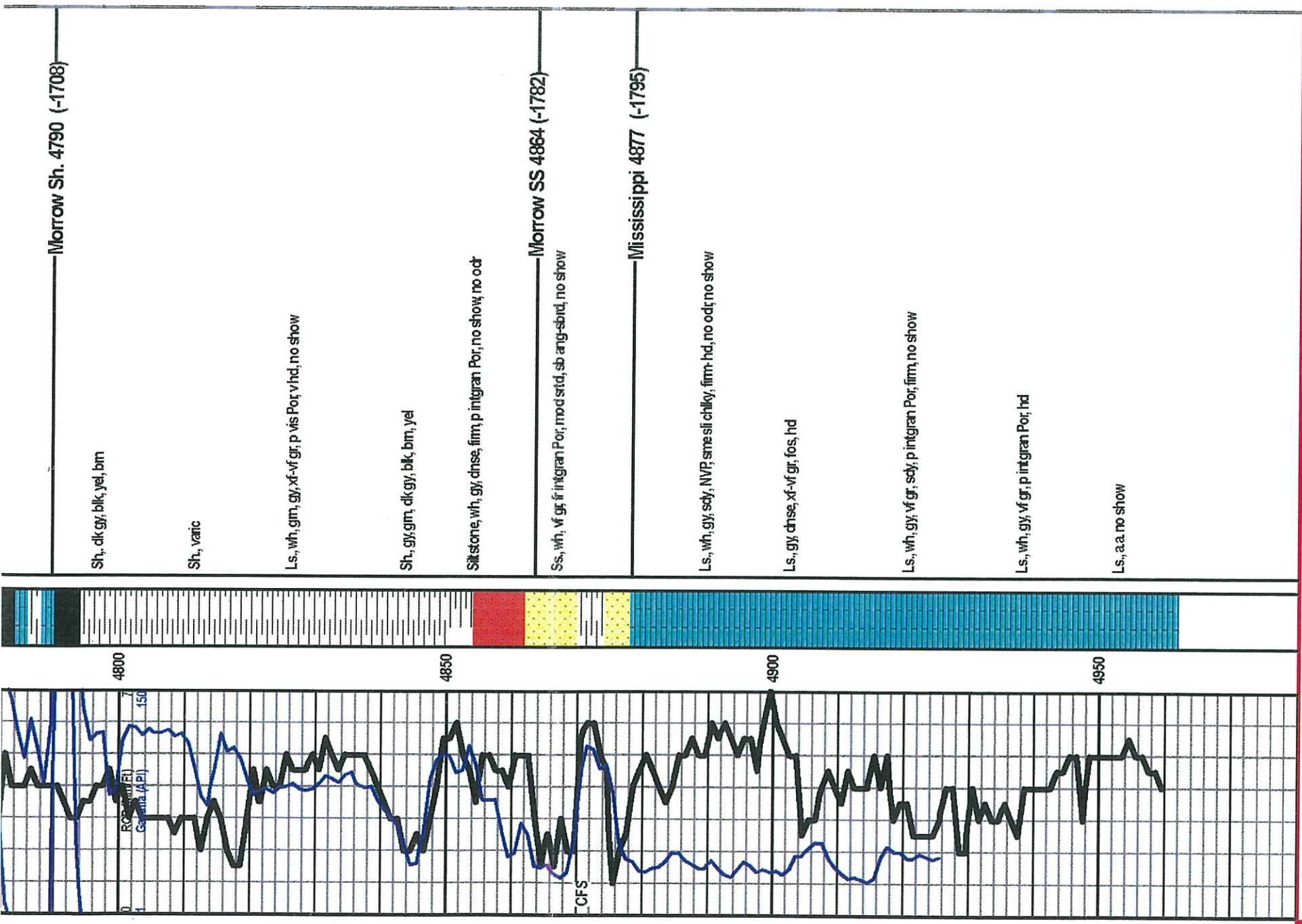
4650

4700

4750

4800

RC
 Gamma (API)



RTD: 4960'
LTD: 4960'

Palomino Petroleum, Inc.
Rocking R Farms #3
16 - 20S - 34W
Scott Co., KS

KB: 3082'