

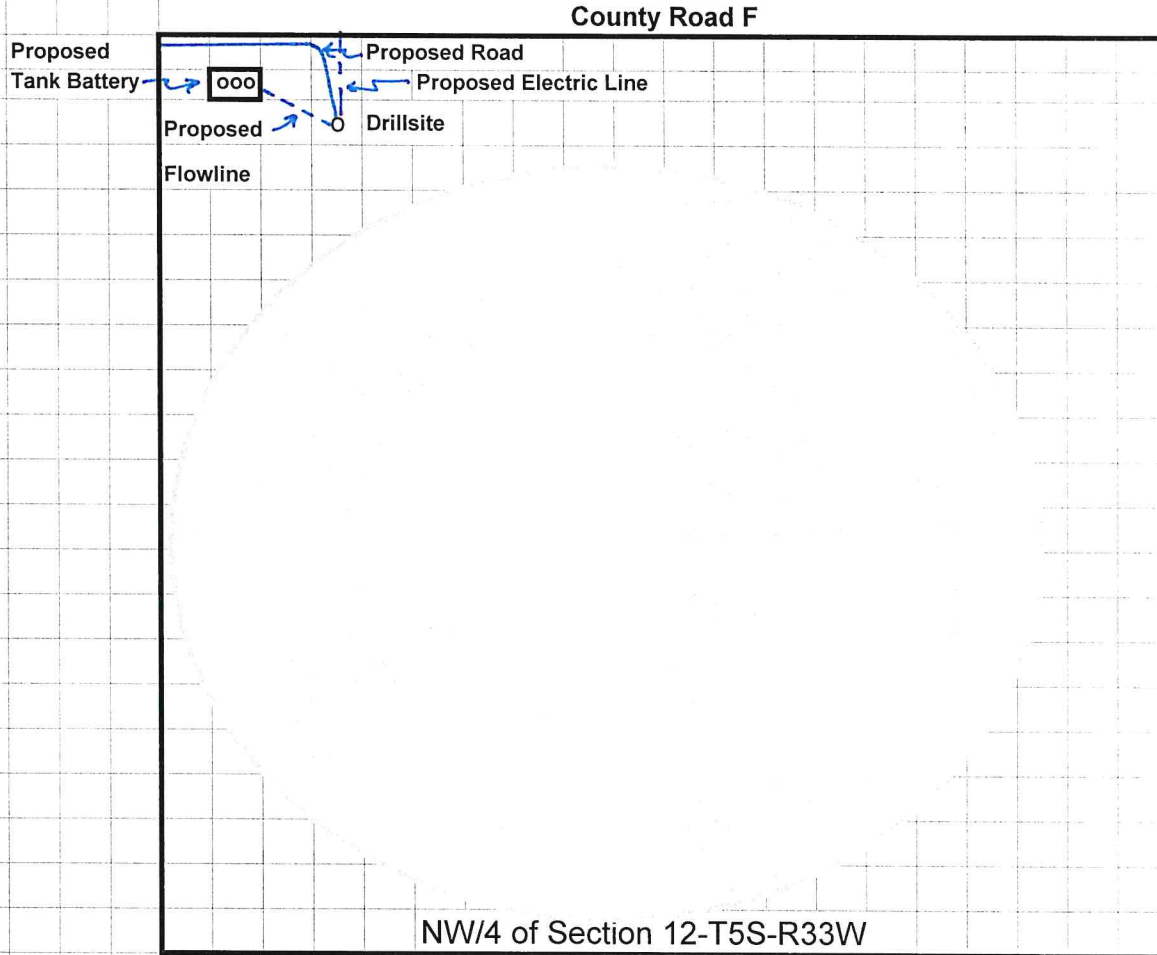
Mull Drilling Company, Inc.
Proposed Location of Roads, Lines and Tank Battery

Well Name: Cooper #1-12
Well Location: *242' FNL & 581' FWL
Section 12-T5S-R33W
Rawlins County, KS

*Note: Lease covers the SW/4 of Section 1 and NW/4 of Section 12, so we are 581' from nearest lease line.



North



Scale



660'