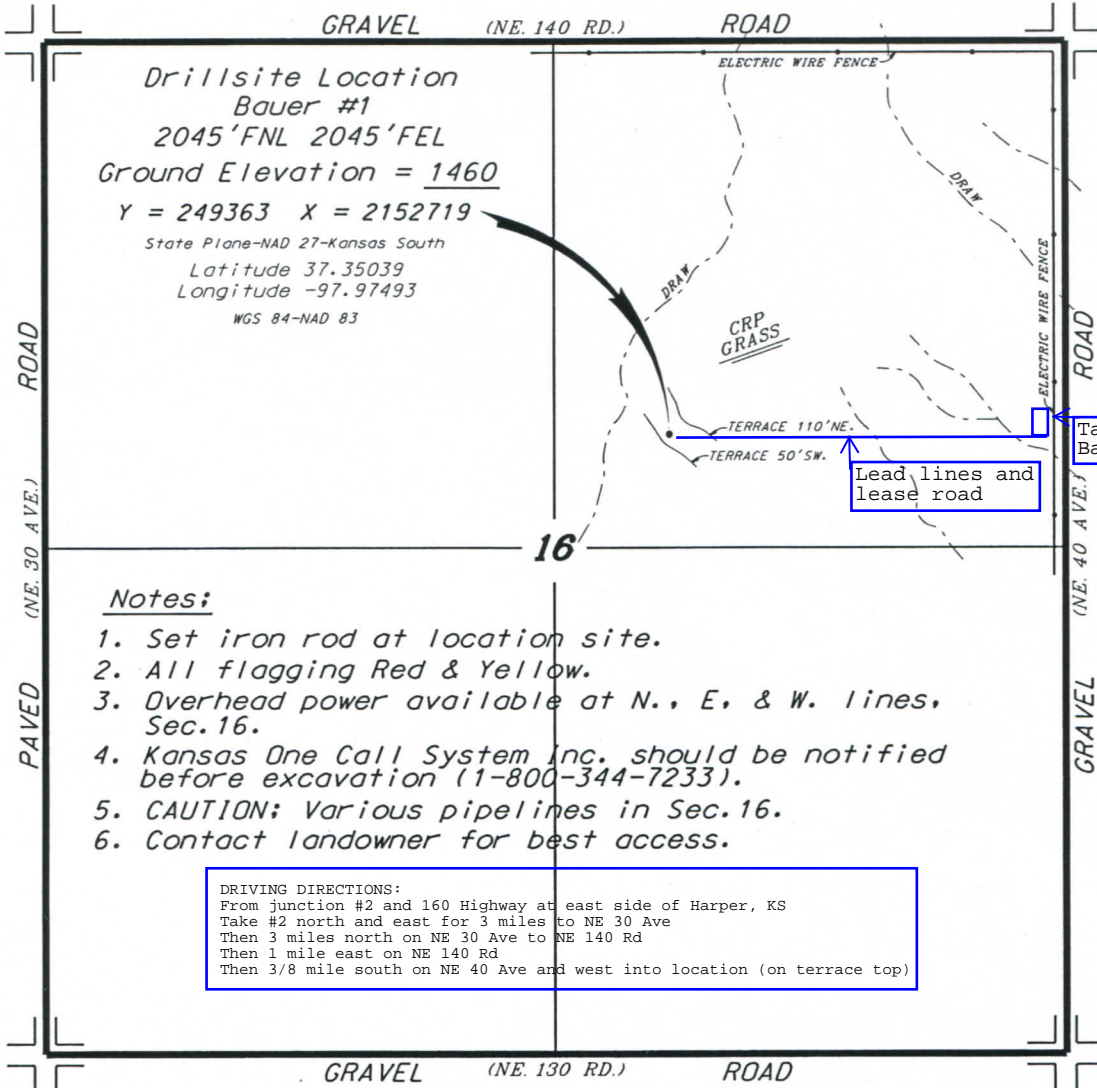


WOOLSEY OPERATING COMPANY, LLC
 BAUER LEASE
 NE. 1/4, SECTION 16, T31S, R6W
 HARPER COUNTY, KANSAS

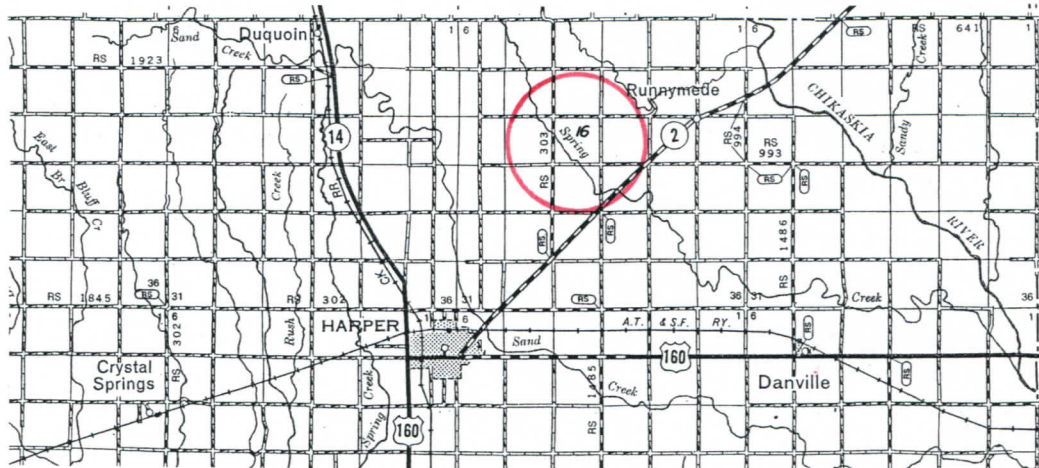


Drillsite Location
 Bauer #1
 2045'FNL 2045'FEL
 Ground Elevation = 1460
 Y = 249363 X = 2152719
 State Plane-NAD 27-Kansas South
 Latitude 37.35039
 Longitude -97.97493
 WGS 84-NAD 83

Notes:

1. Set iron rod at location site.
2. All flagging Red & Yellow.
3. Overhead power available at N., E., & W. lines, Sec. 16.
4. Kansas One Call System Inc. should be notified before excavation (1-800-344-7233).
5. CAUTION; Various pipelines in Sec. 16.
6. Contact landowner for best access.

DRIVING DIRECTIONS:
 From junction #2 and 160 Highway at east side of Harper, KS
 Take #2 north and east for 3 miles to NE 30 Ave
 Then 3 miles north on NE 30 Ave to NE 140 Rd
 Then 1 mile east on NE 140 Rd
 Then 3/8 mile south on NE 40 Ave and west into location (on terrace top)



* Controlling data is based upon the best maps and photographs available to us and upon a regular section of land containing 640 acres.
 * Approximate section lines were determined using the normal standard of care of oilfield surveyors practicing in the state of Kansas. The section corners, which establish the precise section lines, were not necessarily located, and the exact location of the drillsite location in the section is not guaranteed. Therefore, the operator securing this service and accepting this plat and all other parties relying thereon agree to hold Central Kansas Oilfield Services, Inc., its officers and employees harmless from all losses, costs and expenses and said entities released from any liability from incidental or consequential damages.
 * Elevations derived from National Geodetic Vertical Datum.

Date June 20, 2019

* Ingress and egress to location as shown on this plat is per usage only and may not be legally opened for public use. Contact landowner, tenant and county road department for access.

4136000m N.

