

KANSAS CORPORATION COMMISSION
OIL & GAS CONSERVATION DIVISION

TEMPORARY ABANDONMENT WELL APPLICATION

OPERATOR: License#
Name:
Address 1:
Address 2:
City: State: Zip:
Contact Person:
Phone:
Contact Person Email:
Field Contact Person:
Field Contact Person Phone:

API No. 15-
Spot Description:
Sec. Twp. S. R.
GPS Location: Lat: Long:
Datum: NAD27 NAD83 WGS84
County: Elevation:
Lease Name: Well #:
Well Type: Oil Gas OG WSW Other:
SWD Permit #: ENHR Permit #:
Gas Storage Permit #:
Spud Date: Date Shut-In:

Table with 7 columns: Conductor, Surface, Production, Intermediate, Liner, Tubing. Rows include Size, Setting Depth, Amount of Cement, Top of Cement, Bottom of Cement.

Casing Fluid Level from Surface: How Determined? Date:
Casing Squeeze(s): to w / sacks of cement, to w / sacks of cement. Date:
Do you have a valid Oil & Gas Lease? Yes No
Depth and Type: Junk in Hole at Tools in Hole at Casing Leaks: Yes No Depth of casing leak(s):
Type Completion: ALT. I ALT. II Depth of: DV Tool: w / sacks of cement Port Collar: w / sack of cement
Packer Type: Size: Inch Set at: Feet
Total Depth: Plug Back Depth: Plug Back Method:

Geological Date:

Table with 4 columns: Formation Name, Formation Top, Formation Base, Completion Information. Rows 1 and 2.

UNDER PENALTY OF PERJURY I HEREBY ATTEST THAT THE INFORMATION CONTAINED HEREIN IS TRUE AND CORRECT TO THE BEST OF MY KNOWLEDGE

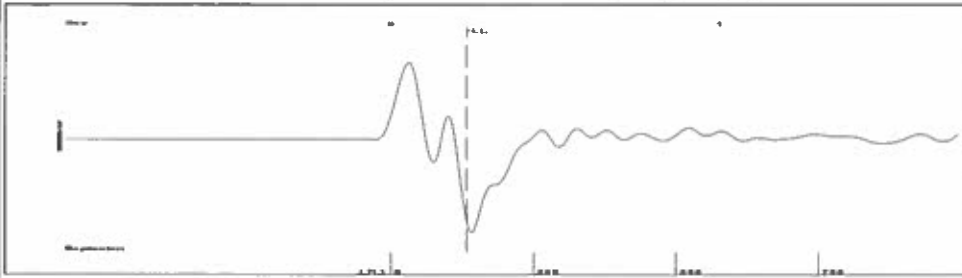
Submitted Electronically

Form with fields: Do NOT Write in This Space - KCC USE ONLY, Date Tested, Results, Date Plugged, Date Repaired, Date Put Back in Service, Review Completed by, Comments, TA Approved: Yes Denied, Date.

Mail to the Appropriate KCC Conservation Office:

Table with 2 columns: Office Address, Phone. Rows for KCC District Office #1, #2, #3, #4.

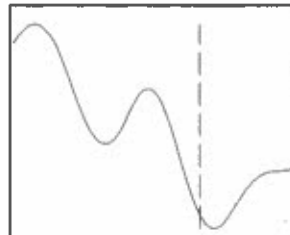
Group: SUBLETTE Well: SWLVLU 20 (acquired on: 05/29/19 15:04:04)



Time 0.231 sec
 Joints 4.19006 Jts
 Depth 132.83 ft

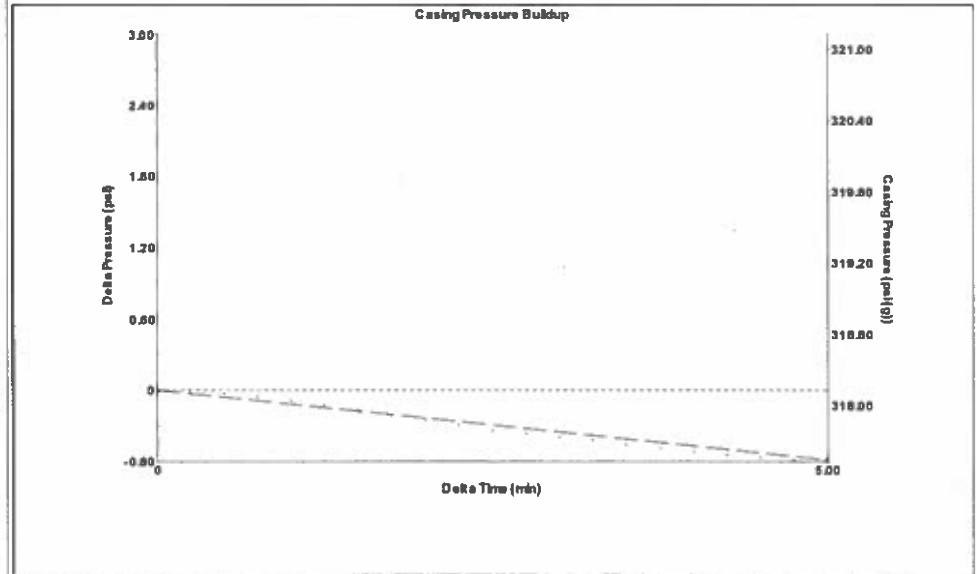
Liquid level calculated with user supplied Acoustic Velocity

Acoustic Velocity 1150 ft/s



Analysis Method: Acoustic Velocity

Group: SUBLETTE Well: SWLVLU 20 (acquired on: 05/29/19 15:04:04)



Change in Pressure -0.59 psi PT14679
 Range 0 - ? psi
 Change in Time 5.00 min

Group: SUBLETTE Well: SWLVLU 20 (acquired on: 05/29/19 15:04:04)

Production
 Current Potential
 Oil - * - - * - BBL/D
 Water - * - - * - BBL/D
 Gas - * - - * - Mscf/D

IPR Method Vogel
 PBHP/SBHP - * -
 Production Efficiency 0.0

Oil 40 deg.API
 Water 1.05 Sp.Gr.H2O
 Gas 0.80 Sp.Gr.AIR

Acoustic Velocity 1150 ft/s

Casing Pressure 318.1 psi (g)
 Casing Pressure Buildup -0.6 psi
 5.00 min
 Gas/Liquid Interface Pressure 319.5 psi (g)
 Liquid Level Depth 132.83 ft
 Pump Intake Depth 4150.00 ft
 Formation Depth 4132.00 ft



Producing
 Annular Gas Flow 0 Mscf/D
 % Liquid 100 %
 Pump Intake 1577.2 psi (g)
 Producing BHP 1572.0 psi (g)
 Static BHP - * - psi (g)

Formation Submergence
 Total Gaseous Liquid Column HT (TVD) 4017 ft
 Equivalent Gas Free Liquid HT (TVD) 4017 ft

Acoustic Test

Group: SUBLETTE Well: SWLVLU 20 (acquired on: 05/29/19 15:04:04)

Entered Acoustic Velocity for Liquid Level depth determination

June 04, 2019

Katherine McClurkan
Merit Energy Company, LLC
13727 Noel Road, Suite 1200
Dallas, TX 75240

Re: Temporary Abandonment
API 15-081-21737-00-00
SWLVLU 20
NW/4 Sec.30-30S-33W
Haskell County, Kansas

Dear Katherine McClurkan:

Your application for Temporary Abandonment (TA) for the above-listed well is denied for the following reasons(s):

High Fluid Level

Pursuant to K.A.R. 82-3-111, the well must be plugged, or returned to service, or obtain temporary abandonment status by July 02, 2019.

This deadline does NOT override any compliance deadline given to you in any Commission Order.

You may contact me if you have any questions.

Sincerely,
Michael Maier
KCC DISTRICT 1