

KANSAS CORPORATION COMMISSION
OIL & GAS CONSERVATION DIVISION

TEMPORARY ABANDONMENT WELL APPLICATION

OPERATOR: License#
Name:
Address 1:
Address 2:
City: State: Zip:
Contact Person:
Phone:
Contact Person Email:
Field Contact Person:
Field Contact Person Phone:

API No. 15-
Spot Description:
Sec. Twp. S. R.
GPS Location: Lat: Long:
Datum: NAD27 NAD83 WGS84
County: Elevation:
Lease Name: Well #:
Well Type: Oil Gas OG WSW Other:
SWD Permit #: ENHR Permit #:
Gas Storage Permit #:
Spud Date: Date Shut-In:

Table with 7 columns: Conductor, Surface, Production, Intermediate, Liner, Tubing. Rows include Size, Setting Depth, Amount of Cement, Top of Cement, Bottom of Cement.

Casing Fluid Level from Surface: How Determined? Date:
Casing Squeeze(s): to w / sacks of cement, to w / sacks of cement. Date:
Do you have a valid Oil & Gas Lease? Yes No
Depth and Type: Junk in Hole at Tools in Hole at Casing Leaks: Yes No Depth of casing leak(s):
Type Completion: ALT. I ALT. II Depth of: DV Tool: w / sacks of cement Port Collar: w / sack of cement
Packer Type: Size: Inch Set at: Feet
Total Depth: Plug Back Depth: Plug Back Method:

Geological Date:

Table with 4 columns: Formation Name, Formation Top, Formation Base, Completion Information. Rows 1 and 2.

UNDER PENALTY OF PERJURY I HEREBY ATTEST THAT THE INFORMATION CONTAINED HEREIN IS TRUE AND CORRECT TO THE BEST OF MY KNOWLEDGE

Submitted Electronically

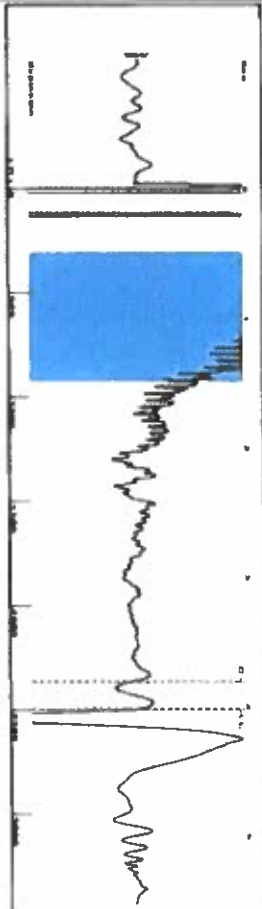
Do NOT Write in This Space - KCC USE ONLY
Date Tested: Results: Date Plugged: Date Repaired: Date Put Back in Service:
Review Completed by: Comments:
TA Approved: Yes Denied Date:

Mail to the Appropriate KCC Conservation Office:

Table with 3 columns: District Office #, Address, Phone. Rows 1-4.

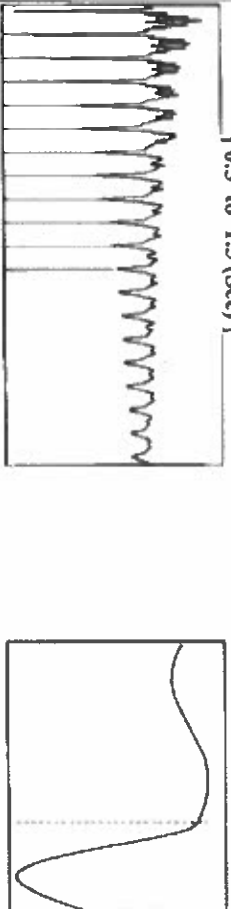


Group: MyWells Well: tmu 201 (acquired on: 06/17/19 14:13:49)



Filter Type High Pass Automatic Collar Count Yes
 Manual Acoustic Velo 1231.46 ft/s Manual JTS/sec 19.4553
 Time 4.019 sec
 Joints 78.6921 Jts
 Depth 2494.54 ft

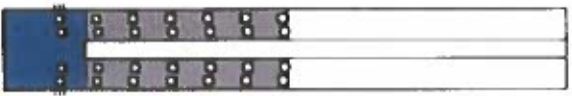
0.5 to 1.5 (Sec) |



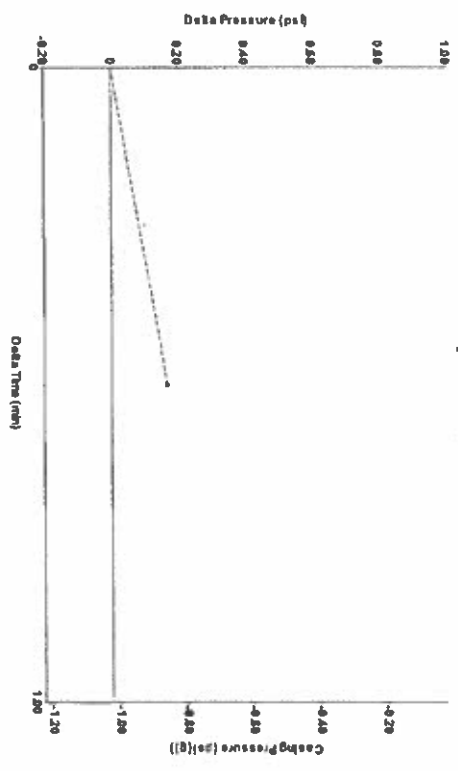
Analysis Method: Automatic

Group: MyWells Well: tmu 201 (acquired on: 06/17/19 14:13:49)

Production	Potential	Casing Pressure	Producing
Current	•••••	-1.0 psi (g)	Annular
Oil	•••••	Casing Pressure Buildup	Gas Flow
Water	•••••	0.2 psi	% Liquid
Gas	•••••	0.50 min	% Misc/D
IPR Method	Vogel	Gas/Liquid Interface Pressure	
PBHP/SBHP	•••••	-0.1 psi (g)	
Production Efficiency	0.0	Liquid Level Depth	
Oil	40 deg API	2494.54 ft	
Water	1.05 Sp.Gr:H2O	Pump Intake Depth	
Gas	0.75 Sp.Gr:AIR	4756.00 ft	
Acoustic Velocity	1241.37 ft/s	Formation Depth	
		5051.00 ft	
Formation Submergence			
Total Gaseous Liquid Column HT (TVD)			
Equivalent Gas Frc Liquid HT (TVD)			
Acoustic Test			

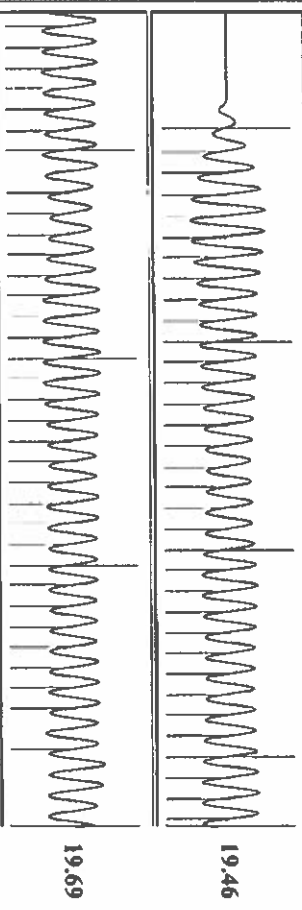


Group: MyWells Well: tmu 201 (acquired on: 06/17/19 14:13:49)



Change in Pressure 0.17 psi
 Change in Time 0.50 min
 PT9424 Range 0.7 psi

Group: MyWells Well: tmu 201 (acquired on: 06/17/19 14:13:49)



Acoustic Velocity 1241.37 ft/s
 Joints Per Second 19.58 Jts/sec
 Depth to liquid level 2494.54 ft
 Automatic Collar Count Yes
 Joints counted 69
 Joints to liquid level 78.6921
 Filter Width 17.4553
 Time to 1st Collar 0.284
 21.4553
 3.808

June 18, 2019

Katherine McClurkan
Merit Energy Company, LLC
13727 Noel Road, Suite 1200
Dallas, TX 75240-7362

Re: Temporary Abandonment
API 15-129-20902-00-01
Turmorrow Morrow Unit 201
SW/4 Sec.08-33S-43W
Morton County, Kansas

Dear Katherine McClurkan:

"Your temporary abandonment (TA) application for the well listed above has been approved. In accordance with K.A.R. 82-3-111 the TA status of this well will expire 06/18/2020.

- * If you return this well to service or plug it, please notify the District Office.
- * If you sell this well you are required to file a Transfer of Operator form, T-1.
- * If the well will remain temporarily abandoned, you must submit a new TA application, CP-111, before 06/18/2020.

You may contact me at the number above if you have questions.

Very truly yours,

Michael Maier"