

KANSAS CORPORATION COMMISSION
OIL & GAS CONSERVATION DIVISION

TEMPORARY ABANDONMENT WELL APPLICATION

OPERATOR: License# \_\_\_\_\_
Name: \_\_\_\_\_
Address 1: \_\_\_\_\_
Address 2: \_\_\_\_\_
City: \_\_\_\_\_ State: \_\_\_\_\_ Zip: \_\_\_\_\_ + \_\_\_\_\_
Contact Person: \_\_\_\_\_
Phone:( \_\_\_\_\_ ) \_\_\_\_\_
Contact Person Email: \_\_\_\_\_
Field Contact Person: \_\_\_\_\_
Field Contact Person Phone: ( \_\_\_\_\_ ) \_\_\_\_\_

API No. 15- \_\_\_\_\_
Spot Description: \_\_\_\_\_
- - - - - Sec. \_\_\_\_\_ Twp. \_\_\_\_\_ S. R. \_\_\_\_\_ E W
\_\_\_\_\_ feet from N / S Line of Section
\_\_\_\_\_ feet from E / W Line of Section
GPS Location: Lat: \_\_\_\_\_, Long: \_\_\_\_\_
Datum: NAD27 NAD83 WGS84
County: \_\_\_\_\_ Elevation: \_\_\_\_\_ GL KB
Lease Name: \_\_\_\_\_ Well #: \_\_\_\_\_
Well Type: (check one) Oil Gas OG WSW Other: \_\_\_\_\_
SWD Permit #: \_\_\_\_\_ ENHR Permit #: \_\_\_\_\_
Gas Storage Permit #: \_\_\_\_\_
Spud Date: \_\_\_\_\_ Date Shut-In: \_\_\_\_\_

Table with 7 columns: Conductor, Surface, Production, Intermediate, Liner, Tubing. Rows include Size, Setting Depth, Amount of Cement, Top of Cement, Bottom of Cement.

Casing Fluid Level from Surface: \_\_\_\_\_ How Determined? \_\_\_\_\_ Date: \_\_\_\_\_
Casing Squeeze(s): \_\_\_\_\_ to \_\_\_\_\_ w / \_\_\_\_\_ sacks of cement, \_\_\_\_\_ to \_\_\_\_\_ w / \_\_\_\_\_ sacks of cement. Date: \_\_\_\_\_
Do you have a valid Oil & Gas Lease? Yes No
Depth and Type: Junk in Hole at \_\_\_\_\_ Tools in Hole at \_\_\_\_\_ Casing Leaks: Yes No Depth of casing leak(s): \_\_\_\_\_
Type Completion: ALT. I ALT. II Depth of: DV Tool: \_\_\_\_\_ w / \_\_\_\_\_ sacks of cement Port Collar: \_\_\_\_\_ w / \_\_\_\_\_ sack of cement
Packer Type: \_\_\_\_\_ Size: \_\_\_\_\_ Inch Set at: \_\_\_\_\_ Feet
Total Depth: \_\_\_\_\_ Plug Back Depth: \_\_\_\_\_ Plug Back Method: \_\_\_\_\_

Geological Date:

Table with 4 columns: Formation Name, Formation Top, Formation Base, Completion Information. Rows 1 and 2.

UNDER PENALTY OF PERJURY I HEREBY ATTEST THAT THE INFORMATION CONTAINED HEREIN IS TRUE AND CORRECT TO THE BEST OF MY KNOWLEDGE

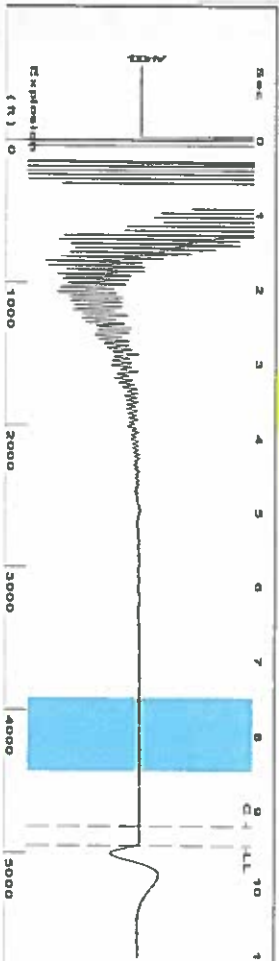
Submitted Electronically

Do NOT Write in This Space - KCC USE ONLY
Date Tested: \_\_\_\_\_ Results: \_\_\_\_\_ Date Plugged: \_\_\_\_\_ Date Repaired: \_\_\_\_\_ Date Put Back in Service: \_\_\_\_\_
Review Completed by: \_\_\_\_\_ Comments: \_\_\_\_\_
TA Approved: Yes Denied Date: \_\_\_\_\_

Mail to the Appropriate KCC Conservation Office:

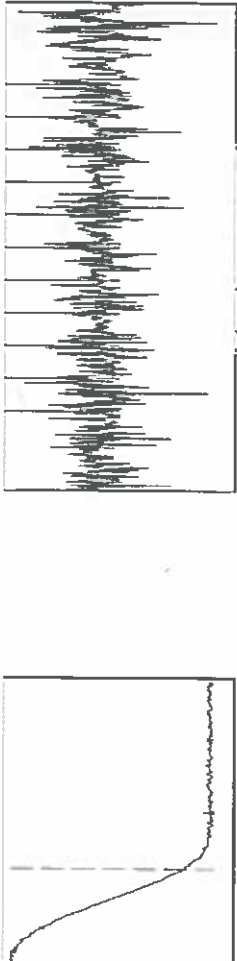
Table with 3 columns: District Office #, Address, Phone. Rows 1-4.

Group: TAVD Well: week farm a-2 (acquired on: 06/17/19 11:06:27)



Filter Type: High Pass  
 Manual Acoustic Velocity: 943.452 ft/s  
 Automatic Collar Count: Yes  
 Manual JTS/sec: 14.881  
 Time: 9.474 sec  
 Joints: 156.2 Jts  
 Depth: 4951.54 ft

7.5 to 8.5 (Sec) |



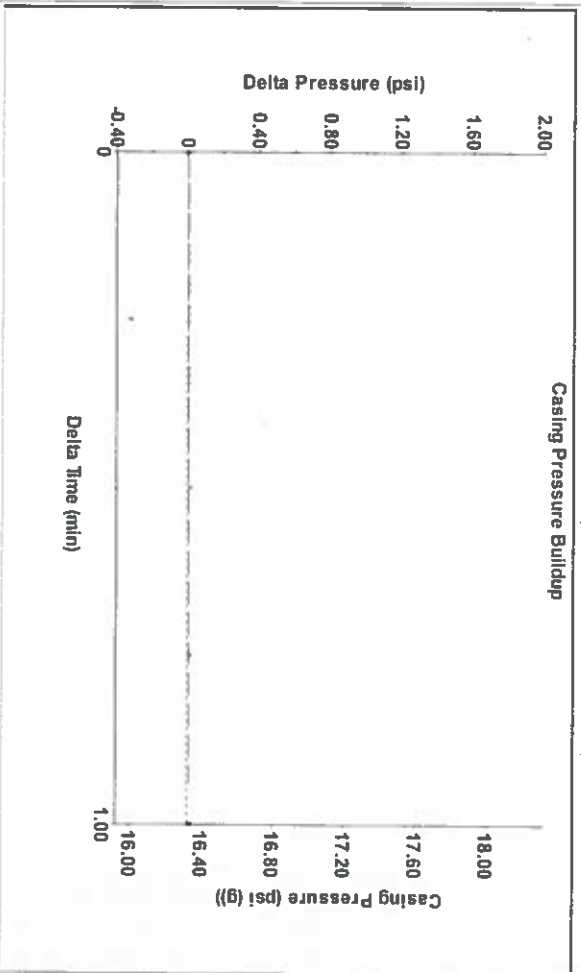
Analysis Method: Automatic

Group: TAVD Well: week farm a-2 (acquired on: 06/17/19 11:06:27)

Production	Potential	Casing Pressure	Producing
Current	Oil: -*- Water: -*- Gas: -*-	Oil: 16.3 psi (g) Water: -*- Gas: 0.015 psi	Annular Gas Flow: 0 Mscf/D % Liquid: 99 %
IPR Method: PBHP/SBHP	Vogel: -*-	Gas/Liquid Interface Pressure: 21.6 psi (g)	Liquid Stream Below Tubing: 0 % Oil: 0 % Water: 100 %
Production Efficiency: 0.0	Liquid Level Depth: 4951.54 ft	Pump Intake Depth: 5419.00 ft	Liquid Below Tubing: -*- %
Oil: 40 deg API	Formation Depth: 5435.00 ft		Pump Intake: 231.4 psi (g) Producing BHP: 238.6 psi (g) Static BHP: -*- psi (g)
Water: 1.05 Sp.Gr.H2O			
Gas: 0.94 Sp.Gr.AIR			
Acoustic Velocity: 1045.29 ft/s			

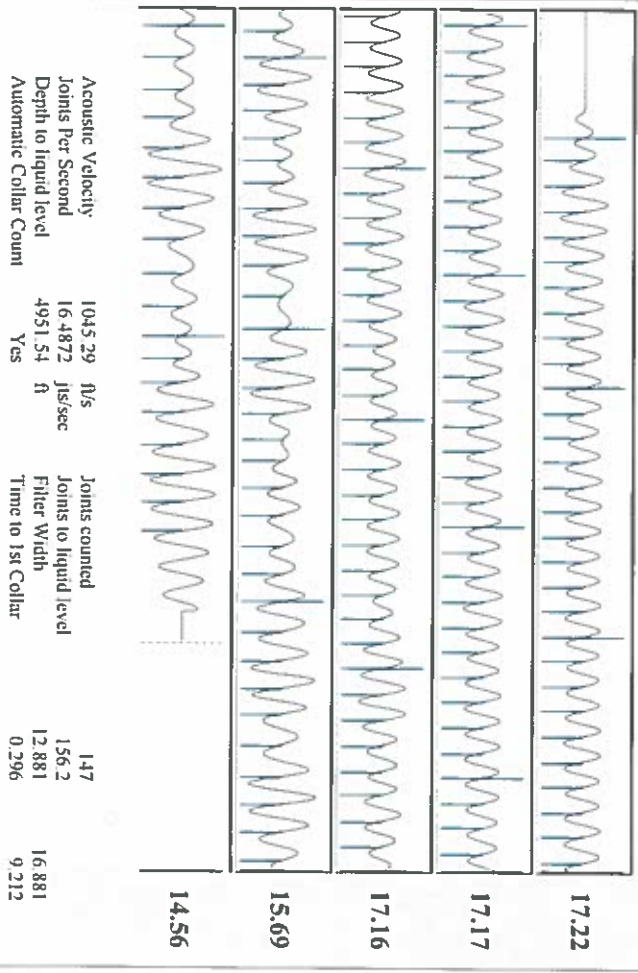


Group: TAVD Well: week farm a-2 (acquired on: 06/17/19 11:06:27)



Change in Pressure: 0.02 psi  
 Change in Time: 1.00 min  
 Range: PT8197  
 0 - 2 psi

Group: TAVD Well: week farm a-2 (acquired on: 06/17/19 11:06:27)



Parameter	Value	Parameter	Value
Acoustic Velocity	1045.29 ft/s	Joints counted	147
Joints Per Second	16.4872 Jts/sec	Joints to liquid level	156.2
Depth to liquid level	4951.54 ft	Filter Width	12.881
Automatic Collar Count	Yes	Time to 1st Collar	0.296

June 18, 2019

Katherine McClurkan  
Merit Energy Company, LLC  
13727 Noel Road, Suite 1200  
Dallas, TX 75240-7362

Re: Temporary Abandonment  
API 15-081-21509-00-00  
Weeks Farm A-2  
NW/4 Sec.11-30S-34W  
Haskell County, Kansas

Dear Katherine McClurkan:

"Your temporary abandonment (TA) application for the well listed above has been approved. In accordance with K.A.R. 82-3-111 the TA status of this well will expire 06/18/2020.

- \* If you return this well to service or plug it, please notify the District Office.
- \* If you sell this well you are required to file a Transfer of Operator form, T-1.
- \* If the well will remain temporarily abandoned, you must submit a new TA application, CP-111, before 06/18/2020.

You may contact me at the number above if you have questions.

Very truly yours,

Michael Maier"