

KANSAS CORPORATION COMMISSION
OIL & GAS CONSERVATION DIVISION

TEMPORARY ABANDONMENT WELL APPLICATION

OPERATOR: License#
Name:
Address 1:
Address 2:
City: State: Zip:
Contact Person:
Phone:
Contact Person Email:
Field Contact Person:
Field Contact Person Phone:

API No. 15-
Spot Description:
Sec. Twp. S. R.
GPS Location: Lat: Long:
Datum: NAD27 NAD83 WGS84
County: Elevation:
Lease Name: Well #:
Well Type: Oil Gas OG WSW Other:
SWD Permit #: ENHR Permit #:
Gas Storage Permit #:
Spud Date: Date Shut-In:

Table with 7 columns: Conductor, Surface, Production, Intermediate, Liner, Tubing. Rows include Size, Setting Depth, Amount of Cement, Top of Cement, Bottom of Cement.

Casing Fluid Level from Surface: How Determined? Date:
Casing Squeeze(s): to w / sacks of cement, to w / sacks of cement. Date:
Do you have a valid Oil & Gas Lease? Yes No
Depth and Type: Junk in Hole at Tools in Hole at Casing Leaks: Yes No Depth of casing leak(s):
Type Completion: ALT. I ALT. II Depth of: DV Tool: w / sacks of cement Port Collar: w / sack of cement
Packer Type: Size: Inch Set at: Feet
Total Depth: Plug Back Depth: Plug Back Method:

Geological Date:

Table with 4 columns: Formation Name, Formation Top, Formation Base, Completion Information. Rows 1 and 2.

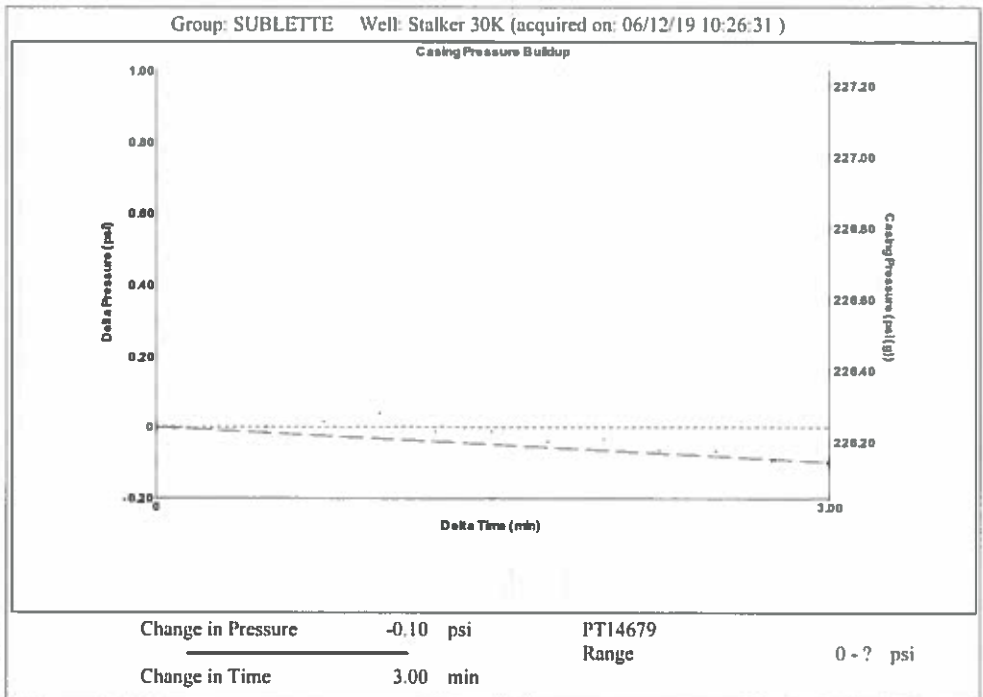
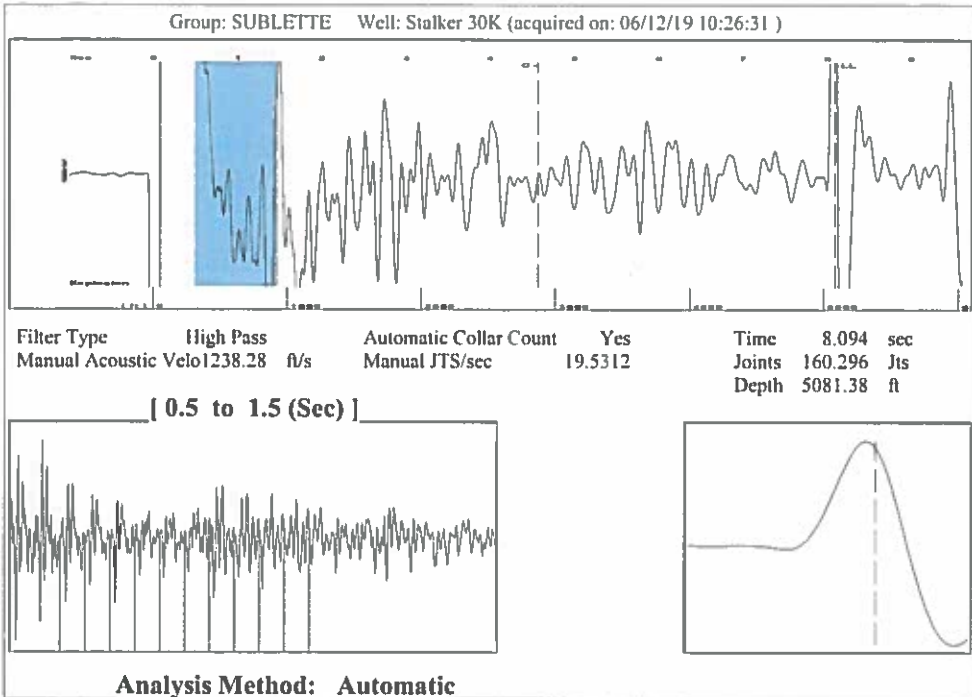
UNDER PENALTY OF PERJURY I HEREBY ATTEST THAT THE INFORMATION CONTAINED HEREIN IS TRUE AND CORRECT TO THE BEST OF MY KNOWLEDGE

Submitted Electronically

Do NOT Write in This Space - KCC USE ONLY
Date Tested: Results: Date Plugged: Date Repaired: Date Put Back in Service:
Review Completed by: Comments:
TA Approved: Yes Denied Date:

Mail to the Appropriate KCC Conservation Office:

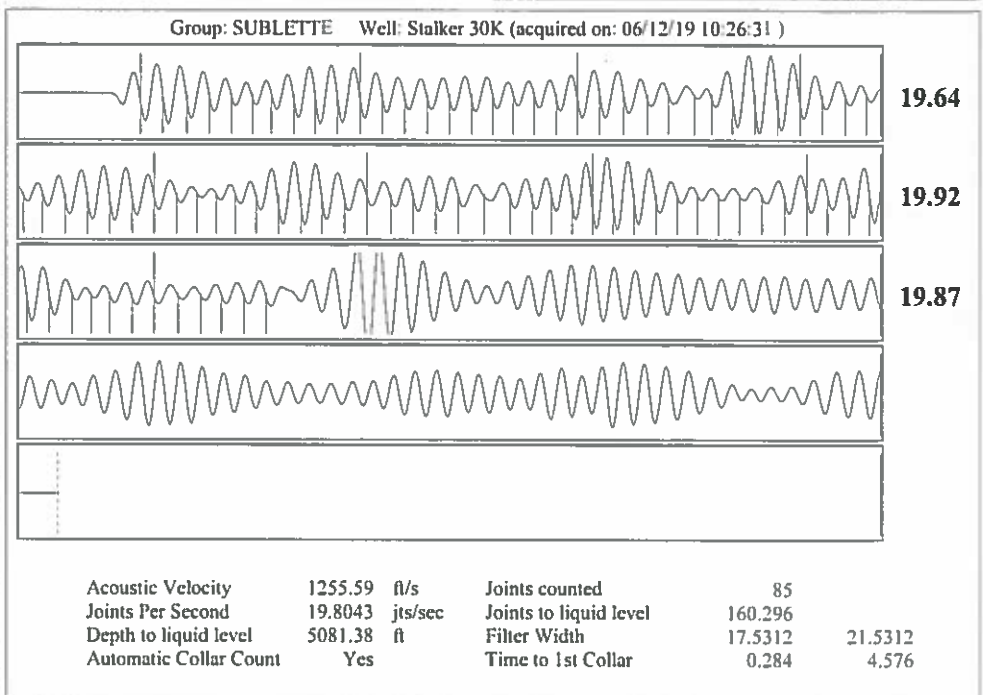
Map of Kansas with 4 numbered districts. Table with 2 columns: Office Address, Phone Number. Rows for District Office #1, #2, #3, #4.



Group: SUBLETTE Well: Stalker 30K (acquired on: 06/12/19 10:26:31)

Production				
Current	Potential	Casing Pressure	Producing	
Oil -*-	-*- BBL/D	226.2 psi (g)		
Water -*-	-*- BBL/D	Casing Pressure Buildup	Annular	
Gas -*-	-*- Mscf/D	-0.097 psi	Gas Flow	0 Mscf/D
		3.00 min	% Liquid	100 %
IPR Method	Vogel	Gas/Liquid Interface Pressure		
PBHP/SBHP	-*-	258.8 psi (g)		
Production Efficiency	0.0	Liquid Level Depth		
		5081.38 ft		
Oil 40 deg API		Pump Intake Depth		
Water 1.05 Sp.Gr.H2O		5167.00 ft		
Gas 0.72 Sp.Gr.AIR		Formation Depth		
		5103.00 ft		
Acoustic Velocity	1255.59 ft/s			
Formation Submergence				
Total Gaseous Liquid Column HIT (TVD)	86 ft			
Equivalent Gas Free Liquid HIT (TVD)	86 ft			
Acoustic Test				

Pump Intake 287.3 psi (g)
Producing BHP 266.0 psi (g)
Static BHP -*- psi (g)



June 18, 2019

Katherine McClurkan
Merit Energy Company, LLC
13727 Noel Road, Suite 1200
Dallas, TX 75240-7362

Re: Temporary Abandonment
API 15-081-21620-00-00
Stalker ET AL 30-K30-30-33
SW/4 Sec.30-30S-33W
Haskell County, Kansas

Dear Katherine McClurkan:

"Your temporary abandonment (TA) application for the well listed above has been approved. In accordance with K.A.R. 82-3-111 the TA status of this well will expire 06/18/2020.

- * If you return this well to service or plug it, please notify the District Office.
- * If you sell this well you are required to file a Transfer of Operator form, T-1.
- * If the well will remain temporarily abandoned, you must submit a new TA application, CP-111, before 06/18/2020.

You may contact me at the number above if you have questions.

Very truly yours,

Michael Maier"