

KANSAS CORPORATION COMMISSION
OIL & GAS CONSERVATION DIVISION

TEMPORARY ABANDONMENT WELL APPLICATION

OPERATOR: License#
Name:
Address 1:
Address 2:
City: State: Zip:
Contact Person:
Phone:
Contact Person Email:
Field Contact Person:
Field Contact Person Phone:

API No. 15-
Spot Description:
Sec. Twp. S. R.
GPS Location: Lat: Long:
Datum: NAD27 NAD83 WGS84
County: Elevation:
Lease Name: Well #:
Well Type: Oil Gas OG WSW Other:
SWD Permit #: ENHR Permit #:
Gas Storage Permit #:
Spud Date: Date Shut-In:

Table with 7 columns: Conductor, Surface, Production, Intermediate, Liner, Tubing. Rows include Size, Setting Depth, Amount of Cement, Top of Cement, Bottom of Cement.

Casing Fluid Level from Surface: How Determined? Date:
Casing Squeeze(s): to w / sacks of cement, to w / sacks of cement. Date:
Do you have a valid Oil & Gas Lease? Yes No
Depth and Type: Junk in Hole at Tools in Hole at Casing Leaks: Yes No Depth of casing leak(s):
Type Completion: ALT. I ALT. II Depth of: DV Tool: w / sacks of cement Port Collar: w / sack of cement
Packer Type: Size: Inch Set at: Feet
Total Depth: Plug Back Depth: Plug Back Method:

Geological Data:

Table with 4 columns: Formation Name, Formation Top, Formation Base, Completion Information. Rows 1 and 2.

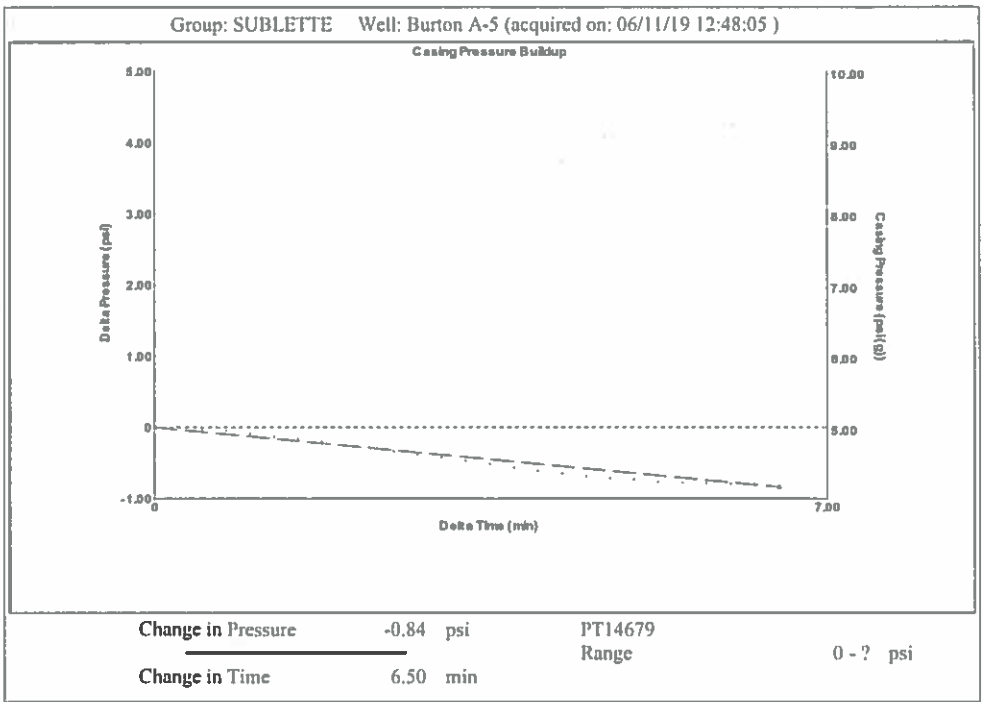
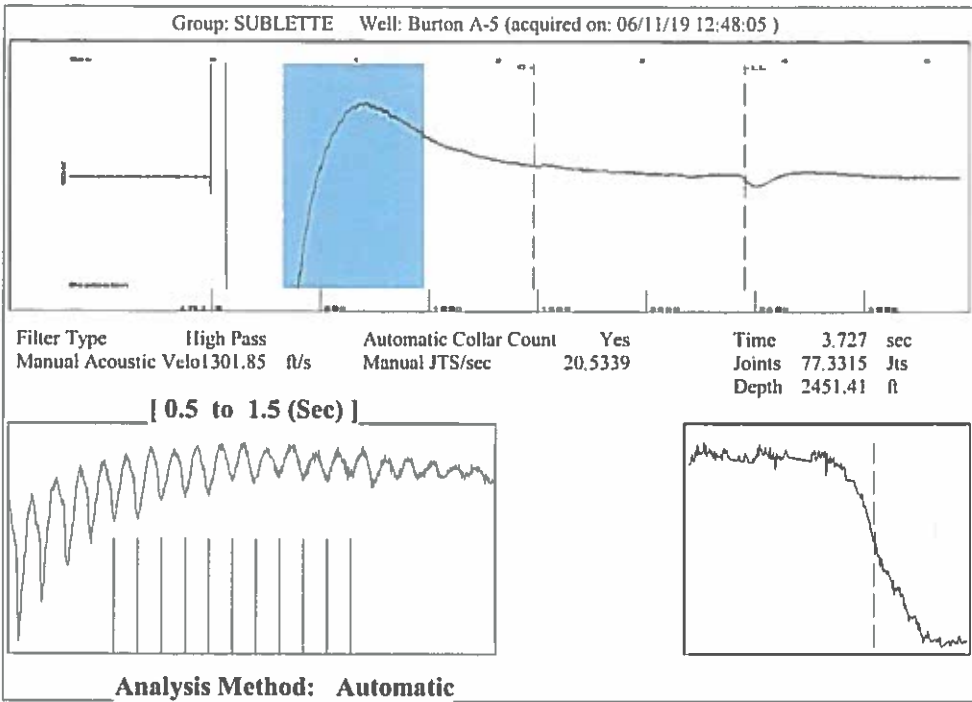
UNDER PENALTY OF PERJURY I HEREBY ATTEST THAT THE INFORMATION CONTAINED HEREIN IS TRUE AND CORRECT TO THE BEST OF MY KNOWLEDGE

Submitted Electronically

Do NOT Write in This Space - KCC USE ONLY
Date Tested: Results: Date Plugged: Date Repaired: Date Put Back in Service:
Review Completed by: Comments:
TA Approved: Yes Denied Date:

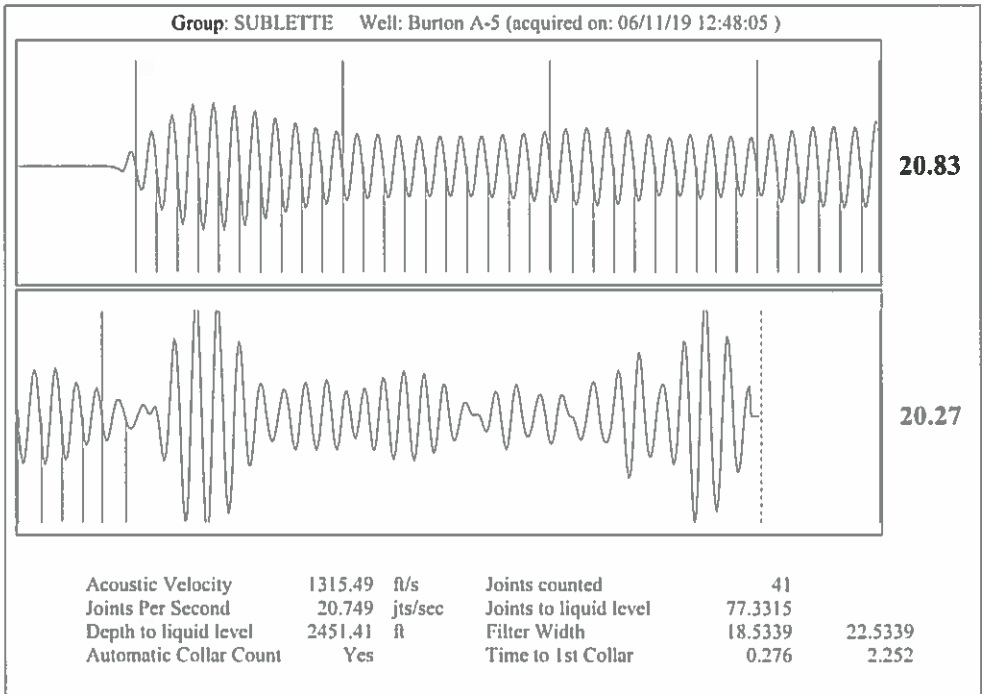
Mail to the Appropriate KCC Conservation Office:

Table with 2 columns: Office Address, Phone. Rows for District Office #1, #2, #3, #4.



Group: SUBLETTE Well: Burton A-5 (acquired on: 06/11/19 12:48:05)

Production Current	Potential	Casing Pressure	Producing
Oil -*-	-*- BBL/D	5.0 psi (g)	Annular Gas Flow 0 Mscf/D
Water -*-	-*- BBL/D	Casing Pressure Buildup -0.840 psi	% Liquid 100 %
Gas -*-	-*- Mscf/D	6.50 min	
IPR Method	Vogel	Gas/Liquid Interface Pressure 6.2 psi (g)	
PBHP/SBHP	-*-		
Production Efficiency	0.0		
Oil 40 deg.API		Liquid Level Depth 2451.41 ft	
Water 1.05 Sp.Gr.H2O		Pump Intake Depth 2972.00 ft	
Gas 0.69 Sp.Gr.AIR		Formation Depth 2881.00 ft	
Acoustic Velocity 1315.49 ft/s			
Formation Submergence		Pump Intake 181.7 psi (g)	
Total Gaseous Liquid Column HT (TVD) 521 ft		Producing BHP 151.2 psi (g)	
Equivalent Gas Free Liquid HT (TVD) 521 ft		Static BHP -*- psi (g)	
Acoustic Test			



June 18, 2019

Katherine McClurkan
Merit Energy Company, LLC
13727 Noel Road, Suite 1200
Dallas, TX 75240-7362

Re: Temporary Abandonment
API 15-081-21471-00-00
Burton A 5
NE/4 Sec.06-29S-34W
Haskell County, Kansas

Dear Katherine McClurkan:

"Your temporary abandonment (TA) application for the well listed above has been approved. In accordance with K.A.R. 82-3-111 the TA status of this well will expire 06/18/2020.

- * If you return this well to service or plug it, please notify the District Office.
- * If you sell this well you are required to file a Transfer of Operator form, T-1.
- * If the well will remain temporarily abandoned, you must submit a new TA application, CP-111, before 06/18/2020.

You may contact me at the number above if you have questions.

Very truly yours,

Michael Maier"