

KANSAS CORPORATION COMMISSION
OIL & GAS CONSERVATION DIVISION

TEMPORARY ABANDONMENT WELL APPLICATION

OPERATOR: License#
Name:
Address 1:
Address 2:
City: State: Zip:
Contact Person:
Phone:
Contact Person Email:
Field Contact Person:
Field Contact Person Phone:

API No. 15-
Spot Description:
Sec. Twp. S. R.
GPS Location: Lat: Long:
Datum: NAD27 NAD83 WGS84
County: Elevation:
Lease Name: Well #:
Well Type: Oil Gas OG WSW Other:
SWD Permit #: ENHR Permit #:
Gas Storage Permit #:
Spud Date: Date Shut-In:

Table with 7 columns: Conductor, Surface, Production, Intermediate, Liner, Tubing. Rows include Size, Setting Depth, Amount of Cement, Top of Cement, Bottom of Cement.

Casing Fluid Level from Surface: How Determined? Date:
Casing Squeeze(s): to w / sacks of cement, to w / sacks of cement. Date:
Do you have a valid Oil & Gas Lease? Yes No
Depth and Type: Junk in Hole at Tools in Hole at Casing Leaks: Yes No Depth of casing leak(s):
Type Completion: ALT. I ALT. II Depth of: DV Tool: w / sacks of cement Port Collar: w / sack of cement
Packer Type: Size: Inch Set at: Feet
Total Depth: Plug Back Depth: Plug Back Method:

Geological Data:

Table with 4 columns: Formation Name, Formation Top, Formation Base, Completion Information. Rows 1 and 2.

UNDER PENALTY OF PERJURY I HEREBY ATTEST THAT THE INFORMATION CONTAINED HEREIN IS TRUE AND CORRECT TO THE BEST OF MY KNOWLEDGE

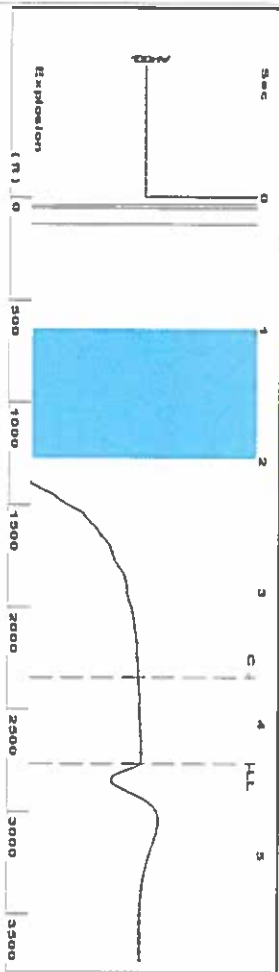
Submitted Electronically

Do NOT Write in This Space - KCC USE ONLY
Date Tested: Results: Date Plugged: Date Repaired: Date Put Back in Service:
Review Completed by: Comments:
TA Approved: Yes Denied Date:

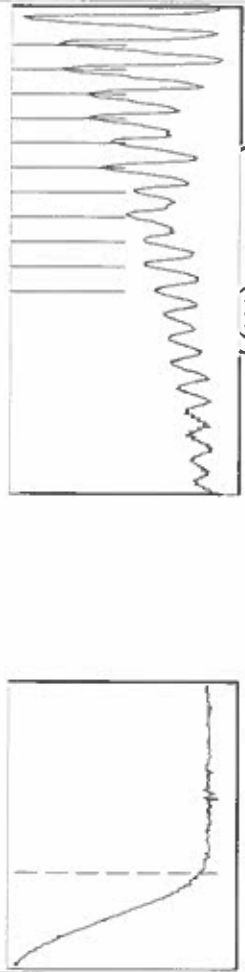
Mail to the Appropriate KCC Conservation Office:

Map of Kansas with 4 numbered districts. Table with 2 columns: Office Address, Phone Number. Rows for District Office #1, #2, #3, #4.

Group: TAVD Well: alexander g-2 (acquired on: 06/07/19 10:59:10)



Filter Type High Pass Automatic Collar Count Yes
 Manual Acoustic Veloid 1252.96 ft/s Manual JTS/sec 19.7628
 Time 4.307 sec
 Joints 87.266 ft/s
 Depth 2766.33 ft



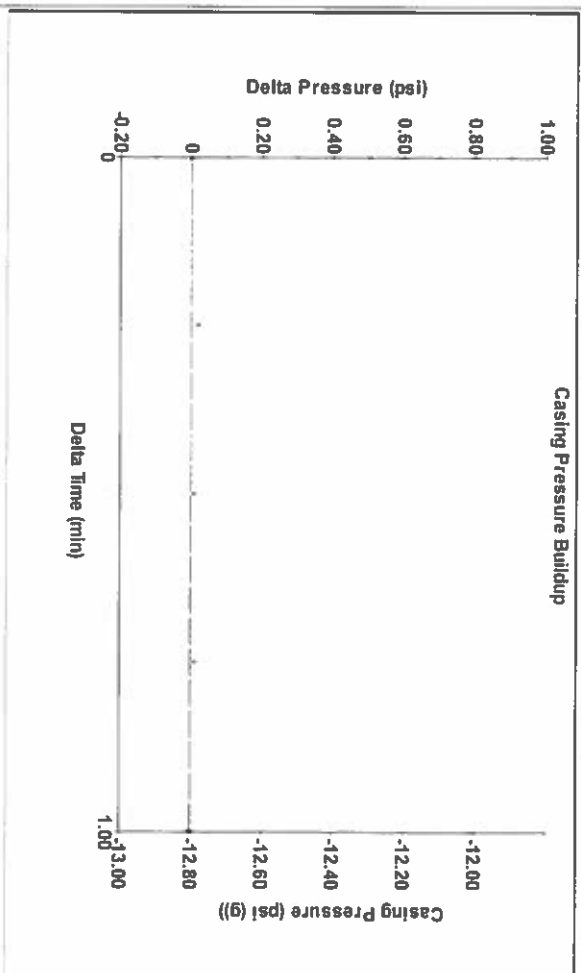
Analysis Method: Automatic

Group: TAVD Well: alexander g-2 (acquired on: 06/07/19 10:59:10)

Production	Potential	Casing Pressure	Producing
Oil -*-	-*-	-12.8 psi (g)	Annular Gas Flow 0 Mscf/D
Water -*-	-*-	Casing Pressure Buildup -0.001 psi	% Liquid 100 %
Gas -*-	-*-	1.00 min	Liquid Stream Below Tubing Oil 0 %
IPR Method PBH/PSBHP	Vogel -*-	Gas/Liquid Interface Pressure -12.7 psi (g)	Water 100 %
Production Efficiency 0.0		Liquid Level Depth 2766.33 ft	Liquid Below Tubing 100 %
Oil 40 deg API		Pump Intake Depth 2931.00 ft	Pump Intake 43.2 psi (g)
Water 1.05 Sp.Gr.1120		Formation Depth 2943.00 ft	Producing BHP 48.6 psi (g)
Gas 0.72 Sp.Gr.AIR			Static BHP -*- psi (g)
Acoustic Velocity 1284.58 ft/s			

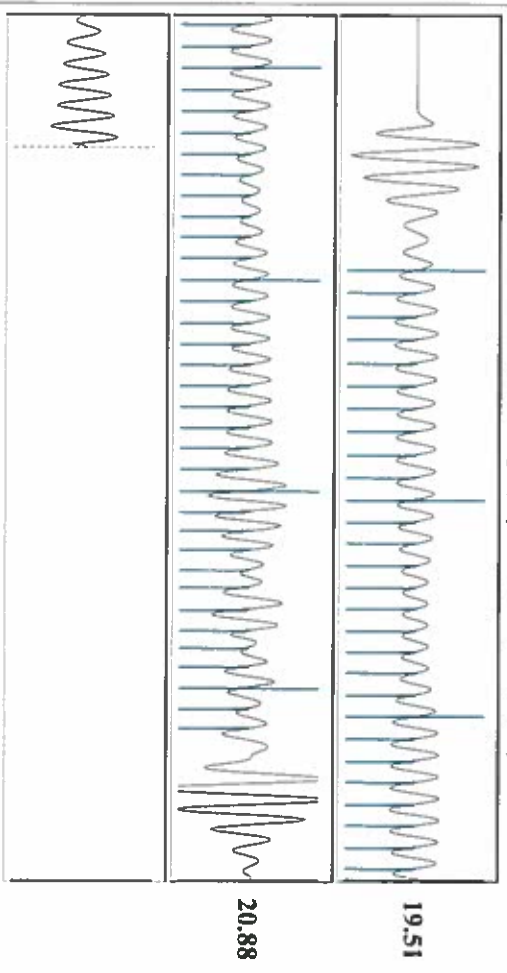


Group: TAVD Well: alexander g-2 (acquired on: 06/07/19 10:59:10)



Change in Pressure -0.00 psi
 Change in Time 1.00 min
 PT8197 Range
 0 - 2 psi

Group: TAVD Well: alexander g-2 (acquired on: 06/07/19 10:59:10)



Acoustic Velocity	1284.58 ft/s	Joints counted	62
Joints Per Second	20.2614 ft/sec	Joints to liquid level	87.266
Depth to liquid level	2766.33 ft	Filter Width	17.7628
Automatic Collar Count	Yes	Time to 1st Collar	0.588

June 18, 2019

Katherine McClurkan
Merit Energy Company, LLC
13727 Noel Road, Suite 1200
Dallas, TX 75240-7362

Re: Temporary Abandonment
API 15-067-20420-00-00
ALEXANDER G 2
SE/4 Sec.15-27S-35W
Grant County, Kansas

Dear Katherine McClurkan:

"Your temporary abandonment (TA) application for the well listed above has been approved. In accordance with K.A.R. 82-3-111 the TA status of this well will expire 06/18/2020.

- * If you return this well to service or plug it, please notify the District Office.
- * If you sell this well you are required to file a Transfer of Operator form, T-1.
- * If the well will remain temporarily abandoned, you must submit a new TA application, CP-111, before 06/18/2020.

You may contact me at the number above if you have questions.

Very truly yours,

Michael Maier"