

KANSAS CORPORATION COMMISSION  
OIL & GAS CONSERVATION DIVISION

TEMPORARY ABANDONMENT WELL APPLICATION

OPERATOR: License# \_\_\_\_\_  
 Name: \_\_\_\_\_  
 Address 1: \_\_\_\_\_  
 Address 2: \_\_\_\_\_  
 City: \_\_\_\_\_ State: \_\_\_\_\_ Zip: \_\_\_\_\_ + \_\_\_\_\_  
 Contact Person: \_\_\_\_\_  
 Phone: ( \_\_\_\_\_ ) \_\_\_\_\_  
 Contact Person Email: \_\_\_\_\_  
 Field Contact Person: \_\_\_\_\_  
 Field Contact Person Phone: ( \_\_\_\_\_ ) \_\_\_\_\_

API No. 15- \_\_\_\_\_  
 Spot Description: \_\_\_\_\_  
 \_\_\_\_\_ - \_\_\_\_\_ - \_\_\_\_\_ - \_\_\_\_\_ Sec. \_\_\_\_\_ Twp. \_\_\_\_\_ S. R. \_\_\_\_\_  E  W  
 \_\_\_\_\_ feet from  N /  S Line of Section  
 \_\_\_\_\_ feet from  E /  W Line of Section  
 GPS Location: Lat: \_\_\_\_\_, Long: \_\_\_\_\_  
(e.g. xx.xxxxx) (e.g. -xxx.xxxxx)  
 Datum:  NAD27  NAD83  WGS84  
 County: \_\_\_\_\_ Elevation: \_\_\_\_\_  GL  KB  
 Lease Name: \_\_\_\_\_ Well #: \_\_\_\_\_  
 Well Type: (check one)  Oil  Gas  OG  WSW  Other: \_\_\_\_\_  
 SWD Permit #: \_\_\_\_\_  ENHR Permit #: \_\_\_\_\_  
 Gas Storage Permit #: \_\_\_\_\_  
 Spud Date: \_\_\_\_\_ Date Shut-In: \_\_\_\_\_

	Conductor	Surface	Production	Intermediate	Liner	Tubing
Size						
Setting Depth						
Amount of Cement						
Top of Cement						
Bottom of Cement						

Casing Fluid Level from Surface: \_\_\_\_\_ How Determined? \_\_\_\_\_ Date: \_\_\_\_\_  
 Casing Squeeze(s): \_\_\_\_\_ to \_\_\_\_\_ w / \_\_\_\_\_ sacks of cement, \_\_\_\_\_ to \_\_\_\_\_ w / \_\_\_\_\_ sacks of cement. Date: \_\_\_\_\_  
(top) (bottom) (top) (bottom)  
 Do you have a valid Oil & Gas Lease?  Yes  No  
 Depth and Type:  Junk in Hole at \_\_\_\_\_  Tools in Hole at \_\_\_\_\_ Casing Leaks:  Yes  No Depth of casing leak(s): \_\_\_\_\_  
(depth) (depth)  
 Type Completion:  ALT. I  ALT. II Depth of:  DV Tool: \_\_\_\_\_ w / \_\_\_\_\_ sacks of cement  Port Collar: \_\_\_\_\_ w / \_\_\_\_\_ sack of cement  
(depth) (depth)  
 Packer Type: \_\_\_\_\_ Size: \_\_\_\_\_ Inch Set at: \_\_\_\_\_ Feet  
 Total Depth: \_\_\_\_\_ Plug Back Depth: \_\_\_\_\_ Plug Back Method: \_\_\_\_\_

**Geological Data:**

Formation Name	Formation Top	Formation Base	Completion Information
1. _____	At: _____	to _____ Feet	Perforation Interval _____ to _____ Feet or Open Hole Interval _____ to _____ Feet
2. _____	At: _____	to _____ Feet	Perforation Interval _____ to _____ Feet or Open Hole Interval _____ to _____ Feet

UNDER PENALTY OF PERJURY I HEREBY ATTEST THAT THE INFORMATION CONTAINED HEREIN IS TRUE AND CORRECT TO THE BEST OF MY KNOWLEDGE

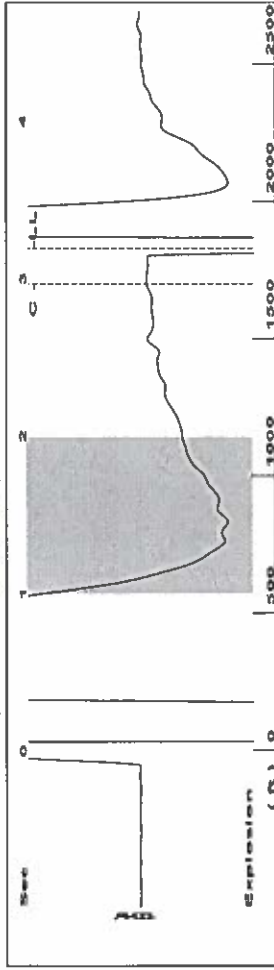
Submitted Electronically

<b>Do NOT Write in This Space - KCC USE ONLY</b>	Date Tested: _____	Results: _____	Date Plugged: _____	Date Repaired: _____	Date Put Back in Service: _____
	Review Completed by: _____ Comments: _____				
TA Approved: <input type="checkbox"/> Yes <input type="checkbox"/> Denied Date: _____					

Mail to the Appropriate KCC Conservation Office:

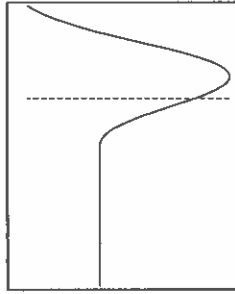
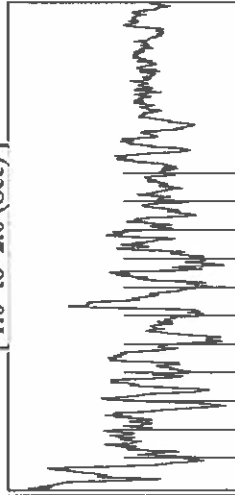
	KCC District Office #1 - 210 E. Frontview, Suite A, Dodge City, KS 67801	Phone 620.682.7933
	KCC District Office #2 - 3450 N. Rock Road, Building 600, Suite 601, Wichita, KS 67226	Phone 316.337.7400
	KCC District Office #3 - 137 E. 21st St., Chanute, KS 66720	Phone 620.902.6450
	KCC District Office #4 - 2301 E. 13th Street, Hays, KS 67601-2651	Phone 785.261.6250

Group: TAD Well: Tait A4 (acquired on: 06/12/19 13:02:34)



Filter Type High Pass Automatic Collar Count Yes  
 Manual Acoustic Velocity 085.62 ft/s Manual JTS/sec 17.1233  
 Time 3.191 sec  
 Joints 57.7034 Jts  
 Depth 1829.20 ft

1.0 to 2.0 (Sec)

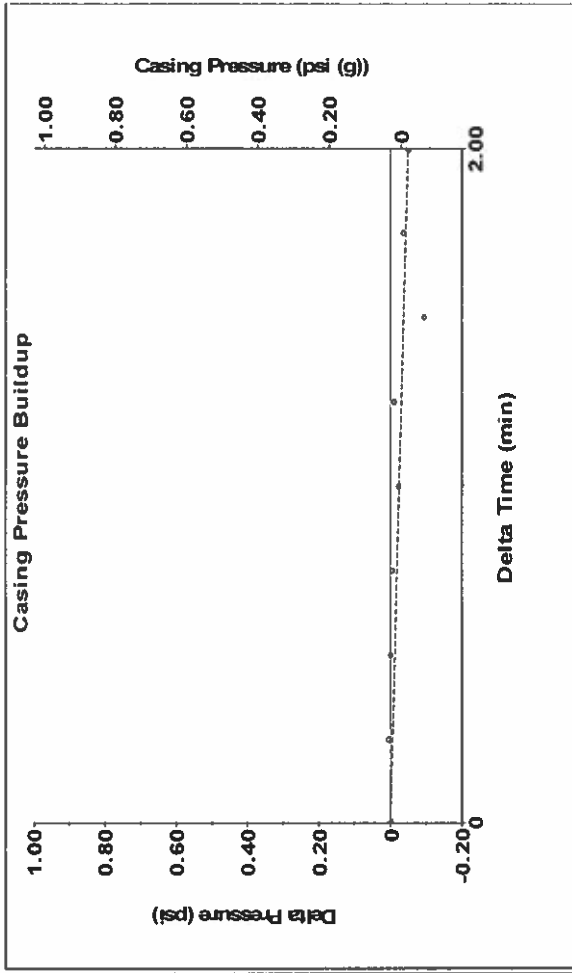


**Analysis Method: Automatic**

Group: TAD Well: Tait A4 (acquired on: 06/12/19 13:02:34)

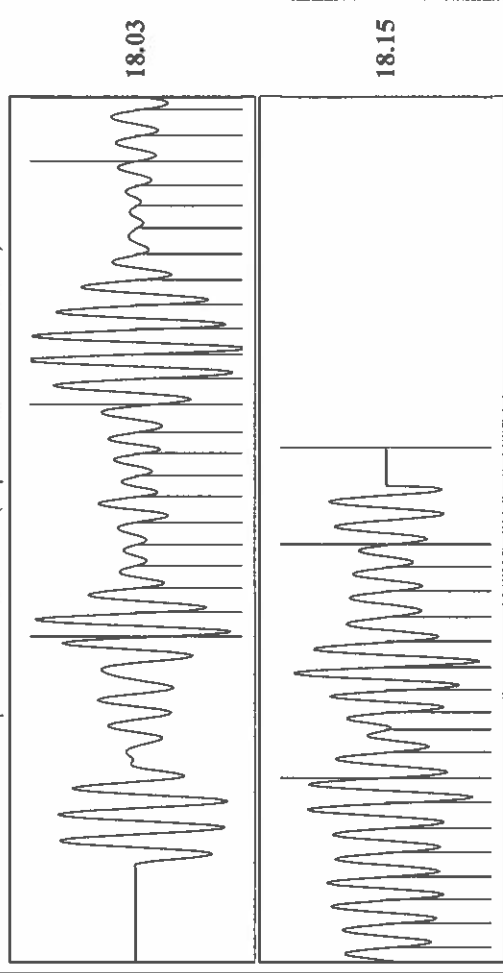
Production	Potential	Casing Pressure	0.0 psi (g)
Oil	0.0 BBL/D	Casing Pressure Buildup	-0.0 psi
Water	0.0 BBL/D	Gas/Liquid Interface Pressure	1146.47 ft
Gas	0.0 Mscf/D	Liquid Level Depth	1829.20 ft
IPR Method	Vogel	Pump Intake Depth	5054.00 ft
PBHP/SBHP	0.0	Formation Depth	5054.00 ft
Production Efficiency	0.0	Acoustic Velocity	1146.47 ft/s
Oil	40 deg API	Formation Submergence	- - - ft
Water	1.05 Sp.Gr:H2O	Total Gaseous Liquid Column HT (TVD)	- - - ft
Gas	0.83 Sp.Gr:AIR	Equivalent Gas Free Liquid HT (TVD)	- - - ft
Acoustic Test		Acoustic Velocity	1146.47 ft/s
		Joints Per Second	18.0832 jts/sec
		Depth to liquid level	1829.2 ft
		Automatic Collar Count	Yes
		Time to 1st Collar	0.752
		Joints counted	40
		Joints to liquid level	57.7034
		Filter Width	15.1233
		Time to 1st Collar	2.964

Group: TAD Well: Tait A4 (acquired on: 06/12/19 13:02:34)



Change in Pressure -0.05 psi  
 Change in Time 2.00 min  
 PT 6902 Range

Group: TAD Well: Tait A4 (acquired on: 06/12/19 13:02:34)



Acoustic Velocity 1146.47 ft/s  
 Joints Per Second 18.0832 jts/sec  
 Depth to liquid level 1829.2 ft  
 Automatic Collar Count Yes  
 Time to 1st Collar 0.752  
 Joints counted 40  
 Joints to liquid level 57.7034  
 Filter Width 15.1233  
 Time to 1st Collar 2.964

July 02, 2019

Katherine McClurkan  
Merit Energy Company, LLC  
13727 Noel Road, Suite 1200  
DALLAS, TX 75240

Re: Temporary Abandonment  
API 15-055-22349-01-00  
Tait A 4  
NW/4 Sec.10-25S-33W  
Finney County, Kansas

Dear Katherine McClurkan:

"Your temporary abandonment (TA) application for the well listed above has been approved. In accordance with K.A.R. 82-3-111 the TA status of this well will expire 07/02/2020.

- \* If you return this well to service or plug it, please notify the District Office.
- \* If you sell this well you are required to file a Transfer of Operator form, T-1.
- \* If the well will remain temporarily abandoned, you must submit a new TA application, CP-111, before 07/02/2020.

You may contact me at the number above if you have questions.

Very truly yours,

Scott Alberg"