

KANSAS CORPORATION COMMISSION
OIL & GAS CONSERVATION DIVISION

Form must be Typed
Form must be signed

TEMPORARY ABANDONMENT WELL APPLICATION

All blanks must be complete

OPERATOR: License#
Name:
Address 1:
Address 2:
City: State: Zip:
Contact Person:
Phone:
Contact Person Email:
Field Contact Person:
Field Contact Person Phone:

API No. 15-
Spot Description:
Sec. Twp. S. R.
feet from N / S Line of Section
feet from E / W Line of Section
GPS Location: Lat: , Long:
Datum: NAD27 NAD83 WGS84
County: Elevation: GL KB
Lease Name: Well #:
Well Type: Oil Gas OG WSW Other:
SWD Permit #: ENHR Permit #:
Gas Storage Permit #:
Spud Date: Date Shut-In:

Table with 7 columns: Conductor, Surface, Production, Intermediate, Liner, Tubing. Rows include Size, Setting Depth, Amount of Cement, Top of Cement, Bottom of Cement.

Casing Fluid Level from Surface: How Determined? Date:
Casing Squeeze(s): to w / sacks of cement, to w / sacks of cement. Date:
Do you have a valid Oil & Gas Lease? Yes No
Depth and Type: Junk in Hole at Tools in Hole at Casing Leaks: Yes No Depth of casing leak(s):
Type Completion: ALT. I ALT. II Depth of: DV Tool: w / sacks of cement Port Collar: w / sack of cement
Packer Type: Size: Inch Set at: Feet
Total Depth: Plug Back Depth: Plug Back Method:

Geological Date:

Table with 4 columns: Formation Name, Formation Top, Formation Base, Completion Information. Rows 1 and 2.

UNDER PENALTY OF PERJURY I HEREBY ATTEST THAT THE INFORMATION CONTAINED HEREIN IS TRUE AND CORRECT TO THE BEST OF MY KNOWLEDGE

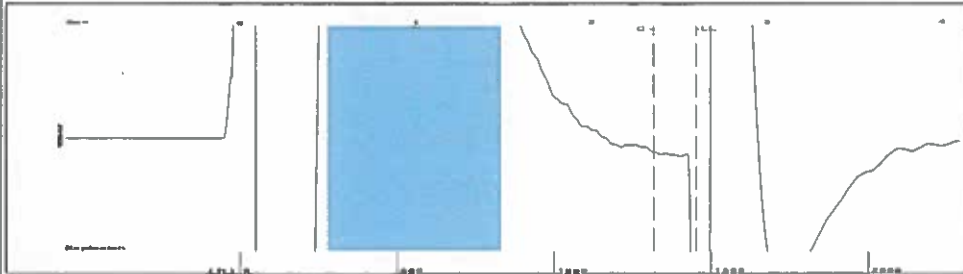
Submitted Electronically

Do NOT Write in This Space - KCC USE ONLY
Date Tested: Results: Date Plugged: Date Repaired: Date Put Back in Service:
Review Completed by: Comments:
TA Approved: Yes Denied Date:

Mail to the Appropriate KCC Conservation Office:

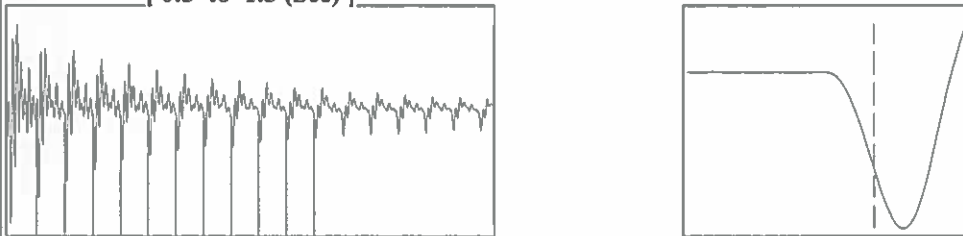
Table with 3 columns: District Office, Address, Phone. Rows for District Office #1, #2, #3, #4.

Group: Ulysses East Well: Moody E-1 (acquired on: 07/09/19 15:06:38)



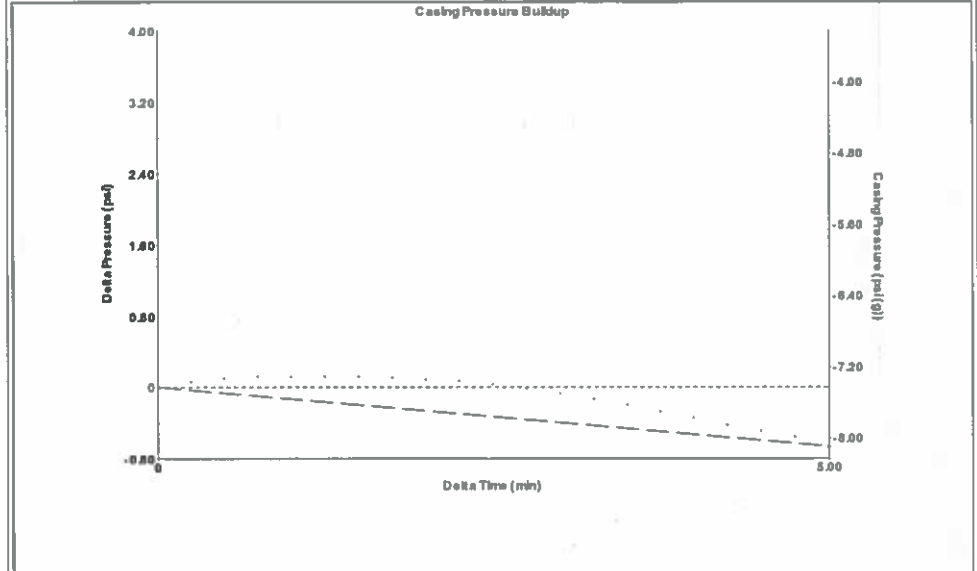
Filter Type High Pass Automatic Collar Count Yes
 Manual Acoustic Velocity 114.24 ft/s Manual JTS/sec 17.5747
 Time 2.594 sec
 Joints 45.7765 Jts
 Depth 1451.11 ft

[0.5 to 1.5 (Sec)]



Analysis Method: Automatic

Group: Ulysses East Well: Moody E-1 (acquired on: 07/09/19 15:06:38)

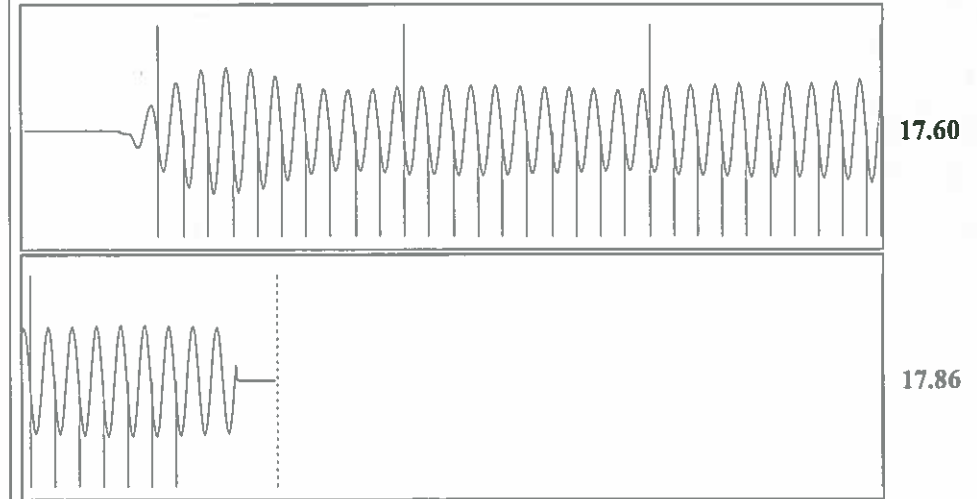


Change in Pressure -0.66 psi PT14679
 Change in Time 5.00 min Range 0 - ? psi

Group: Ulysses East Well: Moody E-1 (acquired on: 07/09/19 15:06:38)

Production	Potential	Casing Pressure	Producing
Oil -*-	-*- BBL/D	-7.4 psi (g)	
Water -*-	-*- BBL/D	Casing Pressure Buildup	Annular Gas Flow
Gas -*-	-*- Mscf/D	-0.7 psi	0 Mscf/D
		5.00 min	% Liquid
		Gas/Liquid Interface Pressure	100 %
		-7.1 psi (g)	
IPR Method	Vogel	Liquid Level Depth	
PBHP/SBHP	-*-	1451.11 ft	
Production Efficiency	0.0	Pump Intake Depth	
		3975.00 ft	
Oil 40 deg.API		Formation Depth	
Water 1.05 Sp.Gr.H2O		3963.00 ft	
Gas 0.86 Sp.Gr.AIR			
Acoustic Velocity	1118.82 ft/s		
		Pump Intake	
		830.4 psi (g)	
		Producing BHIP	
		826.7 psi (g)	
		Static BHIP	
		-*- psi (g)	
Formation Submergence			
Total Gaseous Liquid Column HIT (TVD)	2524 ft		
Equivalent Gas Free Liquid HIT (TVD)	2524 ft		
Acoustic Test			

Group: Ulysses East Well: Moody E-1 (acquired on: 07/09/19 15:06:38)



Acoustic Velocity 1118.82 ft/s Joints counted 36
 Joints Per Second 17.6471 jts/sec Joints to liquid level 45.7765
 Depth to liquid level 1451.11 ft Filter Width 15.5747 19.5747
 Automatic Collar Count Yes Time to 1st Collar 0.316 2.356

July 16, 2019

Katherine McClurkan
Merit Energy Company, LLC
13727 Noel Road, Suite 1200
Dallas, TX 75240

Re: Temporary Abandonment
API 15-081-21993-00-00
Moody E 1
NW/4 Sec.14-27S-34W
Haskell County, Kansas

Dear Katherine McClurkan:

"Your temporary abandonment (TA) application for the well listed above has been approved. In accordance with K.A.R. 82-3-111 the TA status of this well will expire 07/16/2020.

- * If you return this well to service or plug it, please notify the District Office.
- * If you sell this well you are required to file a Transfer of Operator form, T-1.
- * If the well will remain temporarily abandoned, you must submit a new TA application, CP-111, before 07/16/2020.

You may contact me at the number above if you have questions.

Very truly yours,

Michael Maier"