

KANSAS CORPORATION COMMISSION
OIL & GAS CONSERVATION DIVISION

TEMPORARY ABANDONMENT WELL APPLICATION

OPERATOR: License#
Name:
Address 1:
Address 2:
City: State: Zip:
Contact Person:
Phone:
Contact Person Email:
Field Contact Person:
Field Contact Person Phone:

API No. 15-
Spot Description:
Sec. Twp. S. R.
GPS Location: Lat, Long
Datum: NAD27, NAD83, WGS84
County: Elevation:
Lease Name: Well #:
Well Type: Oil, Gas, OG, WSW, Other
SWD Permit #: ENHR Permit #:
Gas Storage Permit #:
Spud Date: Date Shut-In:

Table with 7 columns: Conductor, Surface, Production, Intermediate, Liner, Tubing. Rows include Size, Setting Depth, Amount of Cement, Top of Cement, Bottom of Cement.

Casing Fluid Level from Surface: How Determined? Date:
Casing Squeeze(s): to w / sacks of cement, to w / sacks of cement. Date:
Do you have a valid Oil & Gas Lease? Yes No
Depth and Type: Junk in Hole at Tools in Hole at Casing Leaks: Yes No Depth of casing leak(s):
Type Completion: ALT. I ALT. II Depth of: DV Tool: w / sacks of cement Port Collar: w / sack of cement
Packer Type: Size: Inch Set at: Feet
Total Depth: Plug Back Depth: Plug Back Method:

Geological Date:

Table with 4 columns: Formation Name, Formation Top, Formation Base, Completion Information. Rows 1 and 2.

UNDER PENALTY OF PERJURY I HEREBY ATTEST THAT THE INFORMATION CONTAINED HEREIN IS TRUE AND CORRECT TO THE BEST OF MY KNOWLEDGE

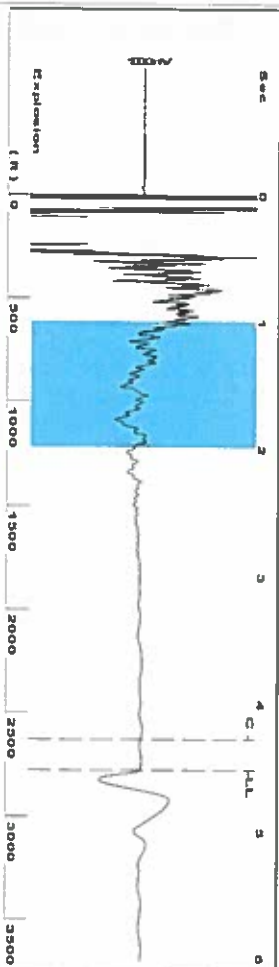
Submitted Electronically

Form with fields: Do NOT Write in This Space - KCC USE ONLY, Date Tested, Results, Date Plugged, Date Repaired, Date Put Back in Service, Review Completed by, Comments, TA Approved: Yes Denied, Date.

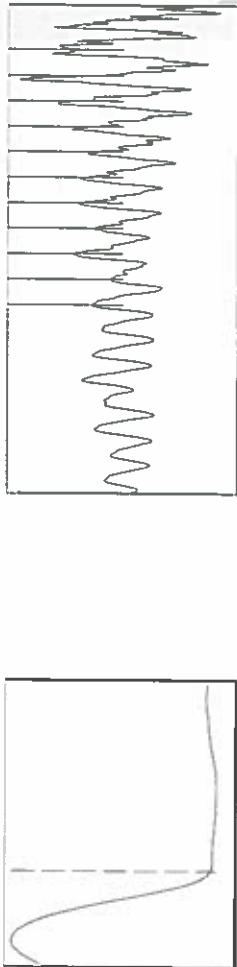
Mail to the Appropriate KCC Conservation Office:

Table with 3 columns: District Office #, Address, Phone. Rows 1-4.

Group TAVD Well King h-2 (acquired on 06/06/19 08:21:42)

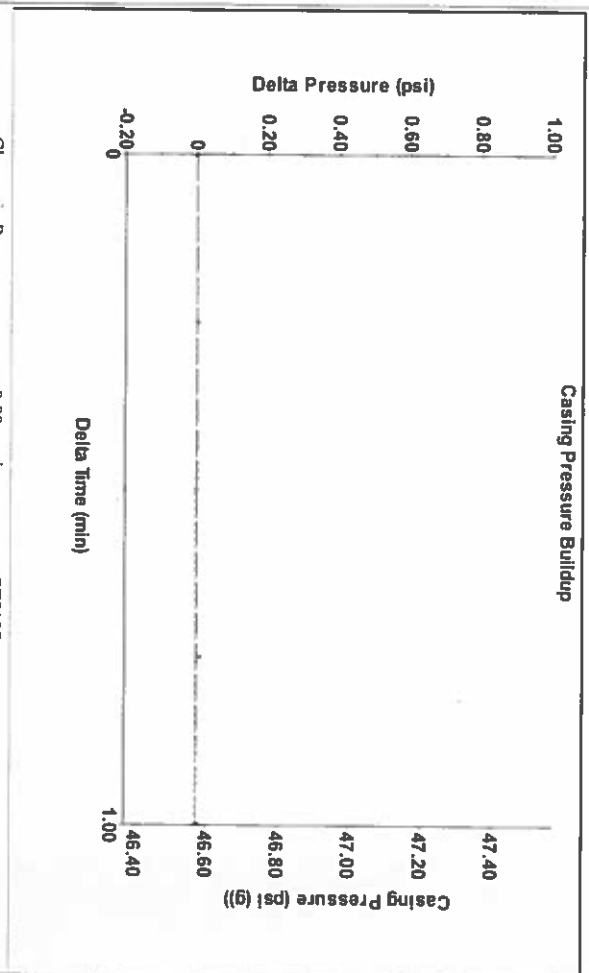


Filter Type High Pass
 Manual Acoustic Velocity 1207.62 ft/s
 Automatic Collar Count Yes
 Manual JTS sec 19.0476
 Time 4.519 sec
 Joints 87.5949 J/s
 Depth 2776.76 ft



Analysis Method: Automatic

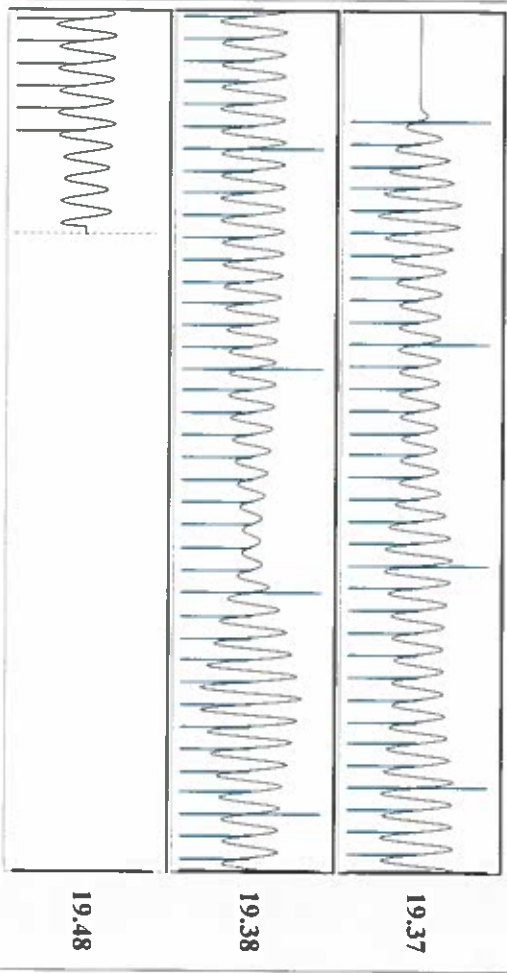
Group TAVD Well King h-2 (acquired on 06/06/19 08:21:42)



Change in Pressure 0.00 psi
 Change in Time 1.00 min
 PT8197
 Range 0 - ? psi

Group TAVD Well King h-2 (acquired on 06/06/19 08:21:42)

Production	Potential	Casing Pressure	Producing
Oil - - -	BBL/D - - -	46.6 psi (g)	Annular Gas Flow 0 Mscf/D
Water - - -	BBL/D - - -	Casing Pressure Buildup 0.004 psi	% Liquid 100 %
Gas - - -	Mscf/D - - -	1.00 min	Liquid Stream Below Tubing 0 %
IPR Method PBHP/SBHP	Vogel - - -	Gas/Liquid Interface Pressure 51.1 psi (g)	Oil 0 %
Production Efficiency 0.0		Liquid Level Depth 2776.76 ft	Water 100 %
Oil 40 deg API		Pump Intake Depth 2926.00 ft	
Water 1.05 Sp.Gr.H2O		Formation Depth 2947.00 ft	
Gas 0.77 Sp.Gr.AIR			
Acoustic Velocity 1228.93 ft/s			
Formation Submergence			
Total Gaseous Liquid Column HT (TVVD) 170 ft			
Equivalent Gas Free Liquid HT (TVVD) 170 ft			
Acoustic Test			



Acoustic Velocity 1228.93 ft/s
 Joints Per Second 19.3837 J/s/Sec
 Depth to liquid level 2776.76 ft
 Automatic Collar Count Yes

Joints counted 78
 Joints to liquid level 87.5949
 Filler Width 17.0476
 Time to 1st Collar 0.256

June 11, 2019

Katherine McClurkan
Merit Energy Company, LLC
13727 Noel Road, Suite 1200
DALLAS, TX 75240-7362

Re: Temporary Abandonment
API 15-067-20468-00-00
King H 2
NE/4 Sec.16-29S-35W
Grant County, Kansas

Dear Katherine McClurkan:

"Your temporary abandonment (TA) application for the well listed above has been approved. In accordance with K.A.R. 82-3-111 the TA status of this well will expire 06/11/2020.

- * If you return this well to service or plug it, please notify the District Office.
- * If you sell this well you are required to file a Transfer of Operator form, T-1.
- * If the well will remain temporarily abandoned, you must submit a new TA application, CP-111, before 06/11/2020.

You may contact me at the number above if you have questions.

Very truly yours,

Michael Maier"