

KANSAS CORPORATION COMMISSION
OIL & GAS CONSERVATION DIVISION

TEMPORARY ABANDONMENT WELL APPLICATION

OPERATOR: License#
Name:
Address 1:
Address 2:
City: State: Zip:
Contact Person:
Phone:
Contact Person Email:
Field Contact Person:
Field Contact Person Phone:

API No. 15-
Spot Description:
Sec. Twp. S. R.
GPS Location: Lat, Long
Datum: NAD27, NAD83, WGS84
County: Elevation:
Lease Name: Well #:
Well Type: Oil, Gas, OG, WSW, Other
SWD Permit #: ENHR Permit #:
Gas Storage Permit #:
Spud Date: Date Shut-In:

Table with 7 columns: Conductor, Surface, Production, Intermediate, Liner, Tubing. Rows include Size, Setting Depth, Amount of Cement, Top of Cement, Bottom of Cement.

Casing Fluid Level from Surface: How Determined? Date:
Casing Squeeze(s): to w / sacks of cement, to w / sacks of cement. Date:
Do you have a valid Oil & Gas Lease? Yes No
Depth and Type: Junk in Hole at Tools in Hole at Casing Leaks: Yes No Depth of casing leak(s):
Type Completion: ALT. I ALT. II Depth of: DV Tool: w / sacks of cement Port Collar: w / sack of cement
Packer Type: Size: Inch Set at: Feet
Total Depth: Plug Back Depth: Plug Back Method:

Geological Date:

Table with 4 columns: Formation Name, Formation Top, Formation Base, Completion Information. Rows 1 and 2.

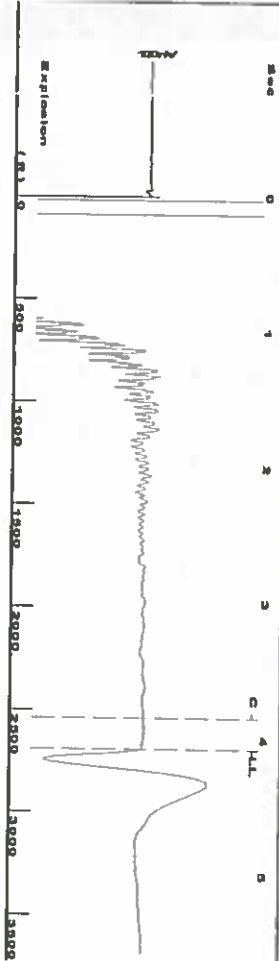
UNDER PENALTY OF PERJURY I HEREBY ATTEST THAT THE INFORMATION CONTAINED HEREIN IS TRUE AND CORRECT TO THE BEST OF MY KNOWLEDGE

Submitted Electronically

Do NOT Write in This Space - KCC USE ONLY
Date Tested: Results: Date Plugged: Date Repaired: Date Put Back in Service:
Review Completed by: Comments:
TA Approved: Yes Denied Date:

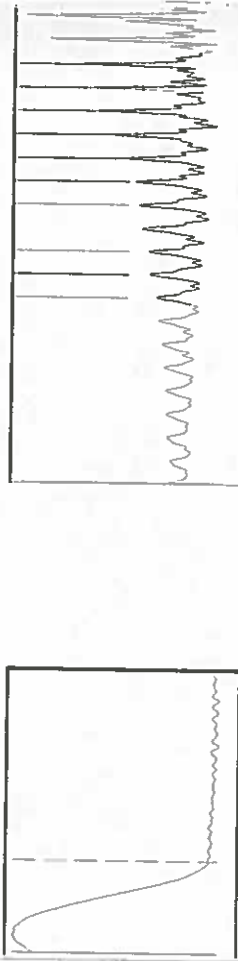
Mail to the Appropriate KCC Conservation Office:

Table with 3 columns: District Office #, Address, Phone. Rows 1-4.



Filter Type: High Pass
 Manual Acoustic Velo: 1315.35 ft/s
 Automatic Collar Count: Yes
 Manual JTS/sec: 20.7469
 Time: 4.071 sec
 Joints: 84.9068 Jts
 Depth: 2691.55 ft

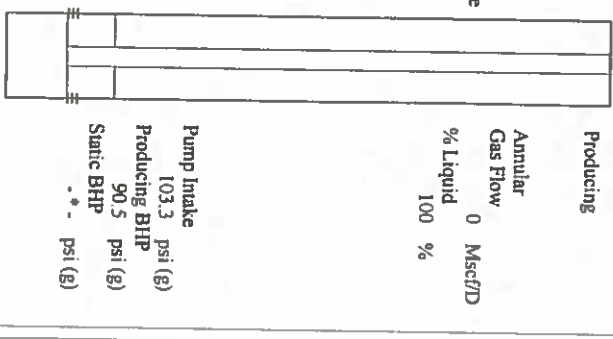
0.5 to 1.5 (Sec)



Analysis Method: Automatic

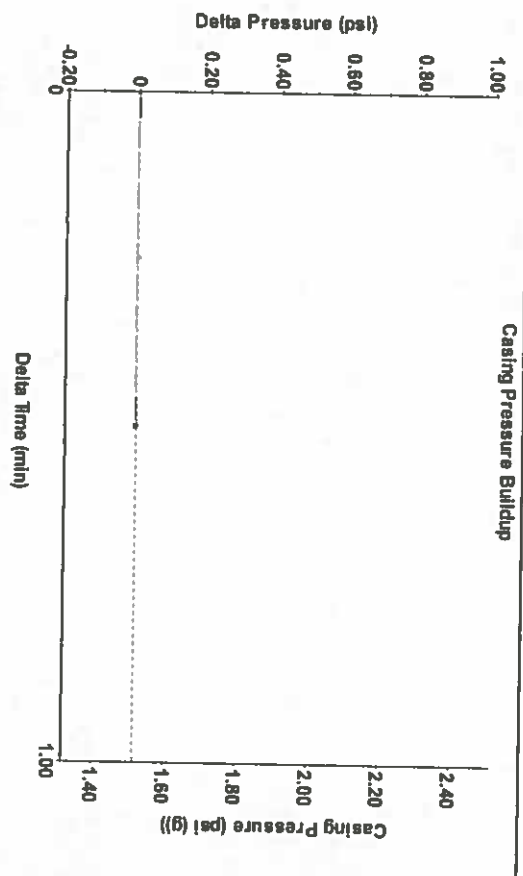
Group: Merit Energy Company-Ulysses Well: Ladrer A-2 (acquired on: 06/05/19 14:55:13)

Production	Potential	Casing Pressure	Producing
Current	BBL/D	1.5 psi (g)	Annular
Oil	BBL/D	Casing Pressure Buildup	Gas Flow
Water	BBL/D	-0.003 psi	0 Mscf/D
Gas	Mscf/D	0.50 min	% Liquid
IPR Method	Vogel	Gas/Liquid Interface Pressure	100 %
PBHP/SBHP	0.0	2.5 psi (g)	
Production Efficiency			
Oil	40 deg API	Liquid Level Depth	
Water	1.05 Sp.Gr./H2O	2691.55 ft	
Gas	0.69 Sp.Gr./AIR	Pump Intake Depth	
Acoustic Velocity	1322.3 ft/s	2990.00 ft	
		Formation Depth	
		2952.00 ft	



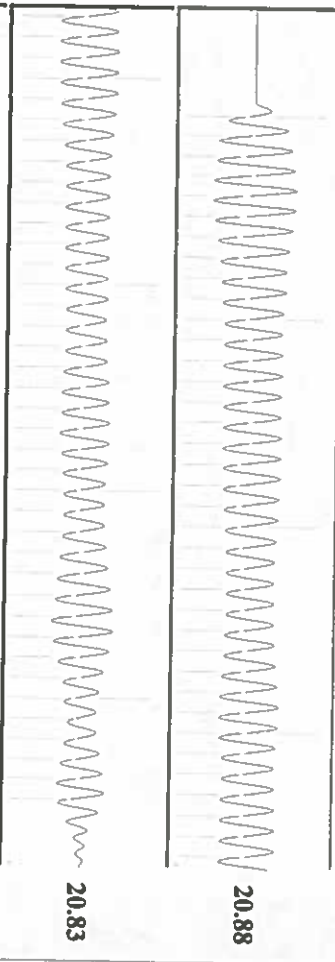
Formation Submergence
 Total Gaseous Liquid Column HT (TVL)
 Equivalent Gas-Free Liquid HT (TVL)
 Acoustic Test

298 ft
 298 ft
 Pump Intake
 103.3 psi (g)
 Producing BHP
 90.5 psi (g)
 Static BHP
 psi (g)



Change in Pressure: -0.00 psi
 Change in Time: 0.50 min
 Range: PT9522
 0 - 7 psi

Group: Merit Energy Company-Ulysses Well: Ladrer A-2 (acquired on: 06/05/19 14:55:13)



Acoustic Velocity: 1322.3 ft/s
 Joints Per Second: 20.8565 jts/sec
 Depth to liquid level: 2691.55 ft
 Automatic Collar Count: Yes

Joints counted: 75
 Joints to liquid level: 84.9068
 Filter Width: 18.7469
 Time to 1st Collar: 0.248
 22.7469
 3.844

June 11, 2019

Katherine McClurkan
Merit Energy Company, LLC
13727 Noel Road, Suite 1200
Dallas, TX 75240-7362

Re: Temporary Abandonment
API 15-067-20416-00-00
Ladner A 2
NE/4 Sec.28-27S-35W
Grant County, Kansas

Dear Katherine McClurkan:

"Your temporary abandonment (TA) application for the well listed above has been approved. In accordance with K.A.R. 82-3-111 the TA status of this well will expire 06/11/2020.

- * If you return this well to service or plug it, please notify the District Office.
- * If you sell this well you are required to file a Transfer of Operator form, T-1.
- * If the well will remain temporarily abandoned, you must submit a new TA application, CP-111, before 06/11/2020.

You may contact me at the number above if you have questions.

Very truly yours,

Michael Maier"