

KANSAS CORPORATION COMMISSION
OIL & GAS CONSERVATION DIVISION

TEMPORARY ABANDONMENT WELL APPLICATION

OPERATOR: License# \_\_\_\_\_
Name: \_\_\_\_\_
Address 1: \_\_\_\_\_
Address 2: \_\_\_\_\_
City: \_\_\_\_\_ State: \_\_\_\_\_ Zip: \_\_\_\_\_ + \_\_\_\_\_
Contact Person: \_\_\_\_\_
Phone:( \_\_\_\_\_ ) \_\_\_\_\_
Contact Person Email: \_\_\_\_\_
Field Contact Person: \_\_\_\_\_
Field Contact Person Phone: ( \_\_\_\_\_ ) \_\_\_\_\_

API No. 15- \_\_\_\_\_
Spot Description: \_\_\_\_\_
- - - - - Sec. \_\_\_\_\_ Twp. \_\_\_\_\_ S. R. \_\_\_\_\_  E  W
\_\_\_\_\_ feet from  N /  S Line of Section
\_\_\_\_\_ feet from  E /  W Line of Section
GPS Location: Lat: \_\_\_\_\_, Long: \_\_\_\_\_
Datum:  NAD27  NAD83  WGS84
County: \_\_\_\_\_ Elevation: \_\_\_\_\_  GL  KB
Lease Name: \_\_\_\_\_ Well #: \_\_\_\_\_
Well Type: (check one)  Oil  Gas  OG  WSW  Other: \_\_\_\_\_
 SWD Permit #: \_\_\_\_\_  ENHR Permit #: \_\_\_\_\_
 Gas Storage Permit #: \_\_\_\_\_
Spud Date: \_\_\_\_\_ Date Shut-In: \_\_\_\_\_

Table with 7 columns: Conductor, Surface, Production, Intermediate, Liner, Tubing. Rows include Size, Setting Depth, Amount of Cement, Top of Cement, Bottom of Cement.

Casing Fluid Level from Surface: \_\_\_\_\_ How Determined? \_\_\_\_\_ Date: \_\_\_\_\_
Casing Squeeze(s): \_\_\_\_\_ to \_\_\_\_\_ w / \_\_\_\_\_ sacks of cement, \_\_\_\_\_ to \_\_\_\_\_ w / \_\_\_\_\_ sacks of cement. Date: \_\_\_\_\_
Do you have a valid Oil & Gas Lease?  Yes  No
Depth and Type:  Junk in Hole at \_\_\_\_\_ (depth)  Tools in Hole at \_\_\_\_\_ (depth) Casing Leaks:  Yes  No Depth of casing leak(s): \_\_\_\_\_
Type Completion:  ALT. I  ALT. II Depth of:  DV Tool: \_\_\_\_\_ w / \_\_\_\_\_ sacks of cement  Port Collar: \_\_\_\_\_ w / \_\_\_\_\_ sack of cement
Packer Type: \_\_\_\_\_ Size: \_\_\_\_\_ Inch Set at: \_\_\_\_\_ Feet
Total Depth: \_\_\_\_\_ Plug Back Depth: \_\_\_\_\_ Plug Back Method: \_\_\_\_\_

Geological Date:

Table with 2 columns: Formation Name, Completion Information. Rows 1 and 2 for formation details.

UNDER PENALTY OF PERJURY I HEREBY ATTEST THAT THE INFORMATION CONTAINED HEREIN IS TRUE AND CORRECT TO THE BEST OF MY KNOWLEDGE

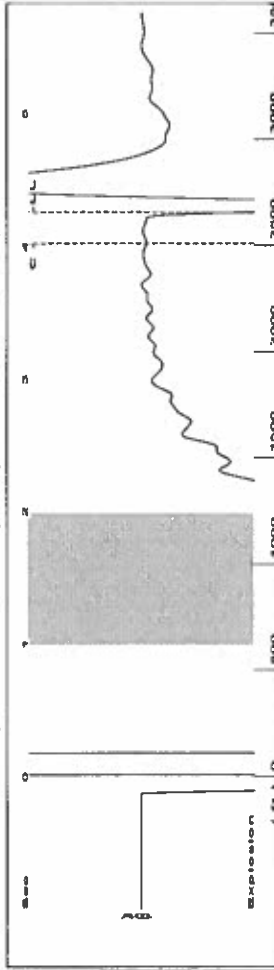
Submitted Electronically

Form with fields: Do NOT Write in This Space - KCC USE ONLY, Date Tested, Results, Date Plugged, Date Repaired, Date Put Back in Service, Review Completed by, Comments, TA Approved (Yes/No), Date.

Mail to the Appropriate KCC Conservation Office:

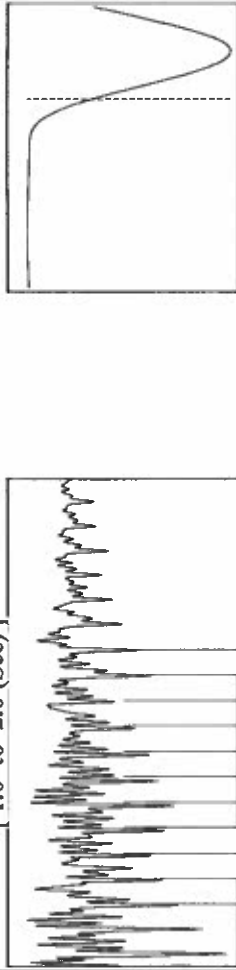
Table with 2 columns: Office Address, Phone Number. Rows for KCC District Office #1, #2, #3, and #4.

Group: TAD Well: mowbray 2 (acquired on: 05/02/19 08:42:49 )



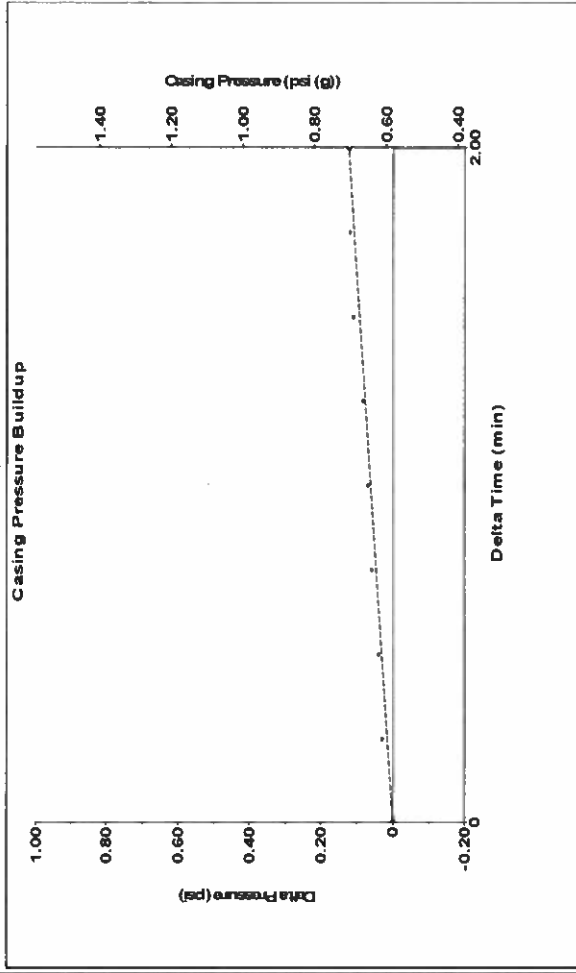
Filter Type High Pass Automatic Collar Count Yes  
 Manual/Acoustic Veloc 1214.56 ft/s Manual JTS/sec 19.1571  
 Time 4.261 sec  
 Joints 83.771 Jts  
 Depth 2655.54 ft

1.0 to 2.0 (Sec)



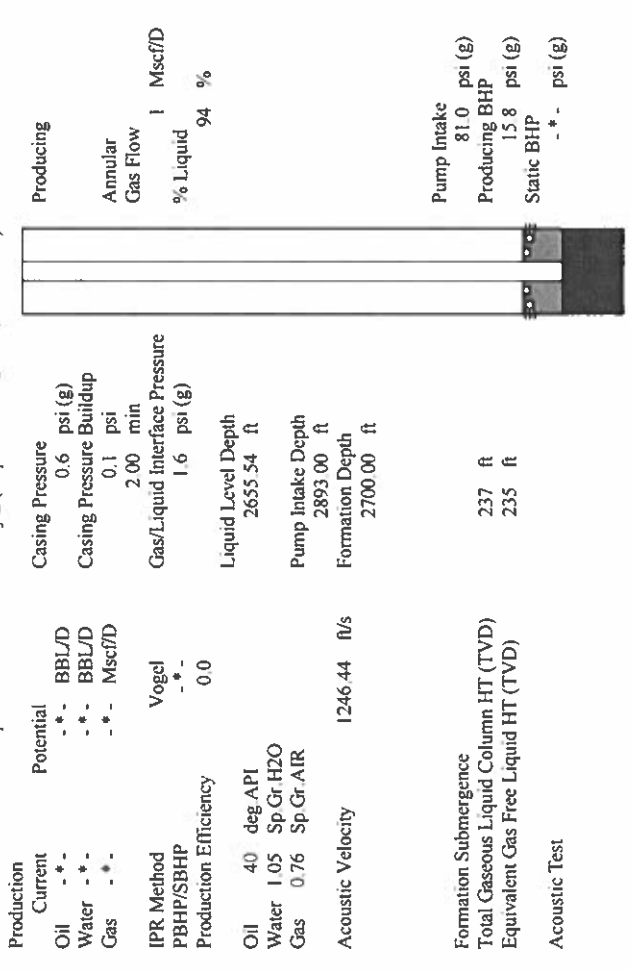
Change in Pressure 0.12 psi  
 Change in Time 2.00 min  
 PT 6902  
 Range 0 - ? psi

Group: TAD Well: mowbray 2 (acquired on: 05/02/19 08:42:49 )



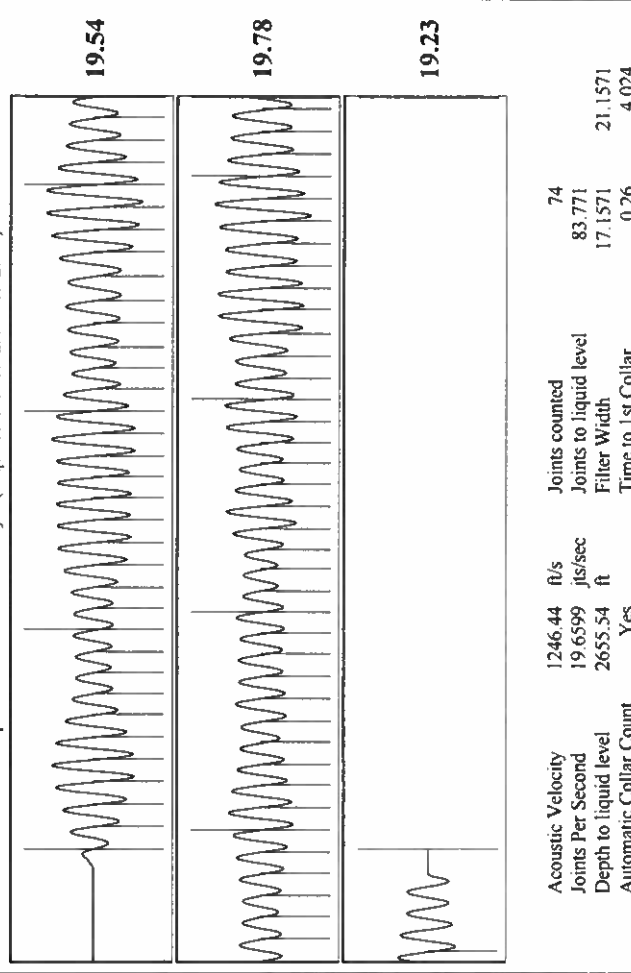
**Analysis Method: Automatic**

Group: TAD Well: mowbray 2 (acquired on: 05/02/19 08:42:49 )



Production Current Potential  
 Oil - \* - BBL/D 0.6 psi (g)  
 Water - \* - BBL/D Casing Pressure Buildup  
 Gas - \* - Mscf/D 0.1 psi  
 IPR Method Vogel 2.00 min  
 PBHP/SBHP - \* - Gas/Liquid Interface Pressure 1.6 psi (g)  
 Production Efficiency 0.0  
 Oil 40 deg/API  
 Water 1.05 Sp.Gr.H2O  
 Gas 0.76 Sp.Gr.AIR  
 Acoustic Velocity 1246.44 ft/s  
 Formation Submergence  
 Total Gaseous Liquid Column HT (TVD) 237 ft  
 Equivalent Gas Free Liquid HT (TVD) 235 ft  
 Acoustic Test  
 Producing Annular Gas Flow 1 Mscf/D 94 %  
 Pump Intake 81.0 psi (g)  
 Producing BHP 15.8 psi (g)  
 Static BHP - \* - psi (g)

Group: TAD Well: mowbray 2 (acquired on: 05/02/19 08:42:49 )



Acoustic Velocity 1246.44 ft/s  
 Joints Per Second 19.6599 jts/sec  
 Depth to liquid level 2655.54 ft  
 Automatic Collar Count Yes  
 Joints counted 74  
 Joints to liquid level 83.771  
 Filter Width 17.1571  
 Time to 1st Collar 4.024

June 11, 2019

Katherine McClurkan  
Merit Energy Company, LLC  
13727 Noel Road, Suite 1200  
Dallas, TX 75240-7362

Re: Temporary Abandonment  
API 15-055-20357-00-00  
Mowbray 2  
N/2 Sec.08-26S-33W  
Finney County, Kansas

Dear Katherine McClurkan:

"Your temporary abandonment (TA) application for the well listed above has been approved. In accordance with K.A.R. 82-3-111 the TA status of this well will expire 06/11/2020.

- \* If you return this well to service or plug it, please notify the District Office.
- \* If you sell this well you are required to file a Transfer of Operator form, T-1.
- \* If the well will remain temporarily abandoned, you must submit a new TA application, CP-111, before 06/11/2020.

You may contact me at the number above if you have questions.

Very truly yours,

Michael Maier"