

KANSAS CORPORATION COMMISSION
OIL & GAS CONSERVATION DIVISION

TEMPORARY ABANDONMENT WELL APPLICATION

OPERATOR: License#
Name:
Address 1:
Address 2:
City: State: Zip:
Contact Person:
Phone:
Contact Person Email:
Field Contact Person:
Field Contact Person Phone:

API No. 15-
Spot Description:
Sec. Twp. S. R.
GPS Location: Lat, Long
Datum: NAD27, NAD83, WGS84
County: Elevation:
Lease Name: Well #:
Well Type: Oil, Gas, OG, WSW, Other
SWD Permit #: ENHR Permit #:
Gas Storage Permit #:
Spud Date: Date Shut-In:

Table with 7 columns: Conductor, Surface, Production, Intermediate, Liner, Tubing. Rows include Size, Setting Depth, Amount of Cement, Top of Cement, Bottom of Cement.

Casing Fluid Level from Surface: How Determined? Date:
Casing Squeeze(s): to w / sacks of cement, to w / sacks of cement. Date:
Do you have a valid Oil & Gas Lease? Yes No
Depth and Type: Junk in Hole at Tools in Hole at Casing Leaks: Yes No Depth of casing leak(s):
Type Completion: ALT. I ALT. II Depth of: DV Tool: w / sacks of cement Port Collar: w / sack of cement
Packer Type: Size: Inch Set at: Feet
Total Depth: Plug Back Depth: Plug Back Method:

Geological Data:

Table with 4 columns: Formation Name, Formation Top, Formation Base, Completion Information. Rows 1 and 2.

UNDER PENALTY OF PERJURY I HEREBY ATTEST THAT THE INFORMATION CONTAINED HEREIN IS TRUE AND CORRECT TO THE BEST OF MY KNOWLEDGE

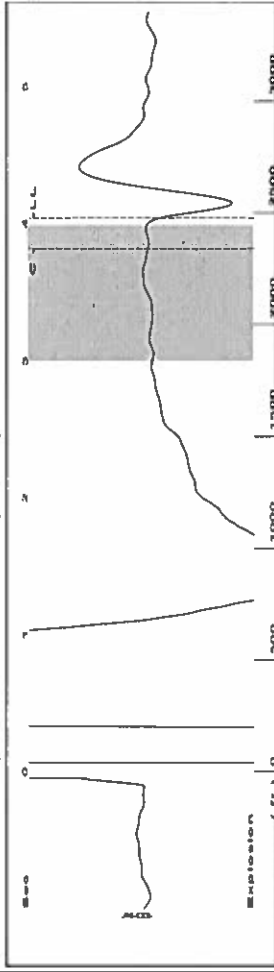
Submitted Electronically

Do NOT Write in This Space - KCC USE ONLY
Date Tested: Results: Date Plugged: Date Repaired: Date Put Back in Service:
Review Completed by: Comments:
TA Approved: Yes Denied Date:

Mail to the Appropriate KCC Conservation Office:

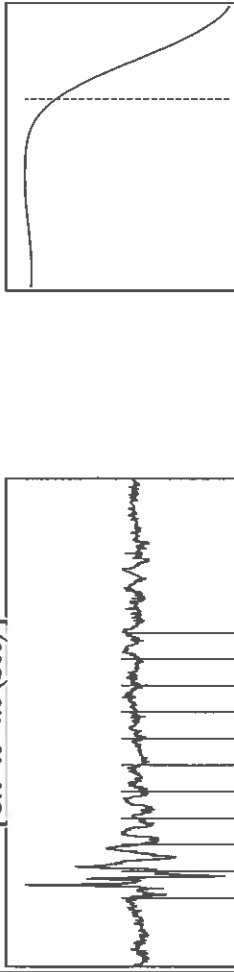
Table with 3 columns: District Office #, Address, Phone. Rows 1-4.

Group: Route 4 Well: Garden City K-3 (acquired on: 05/02/19 12:59:26)



Filter Type High Pass Automatic Collar Count Yes Time 4.039 sec  
 Manual Acoustic Veloc 1165.44 ft/s Manual JTS/sec 18.3824 Joints 78.1085 Jts  
 Depth 2476.04 ft

[ 3.0 to 4.0 (Sec) ]

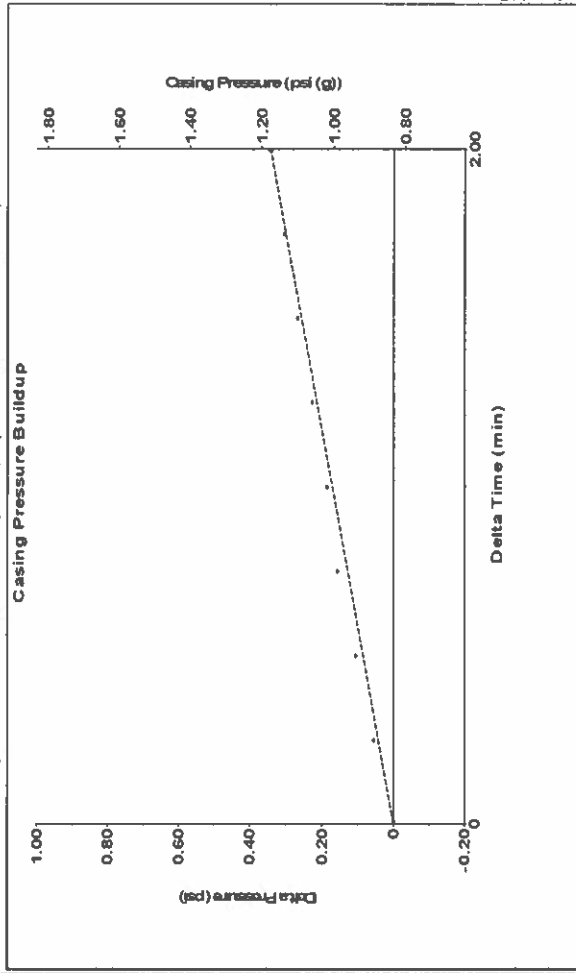


**Analysis Method: Automatic**

Group: Route 4 Well: Garden City K-3 (acquired on: 05/02/19 12:59:26)

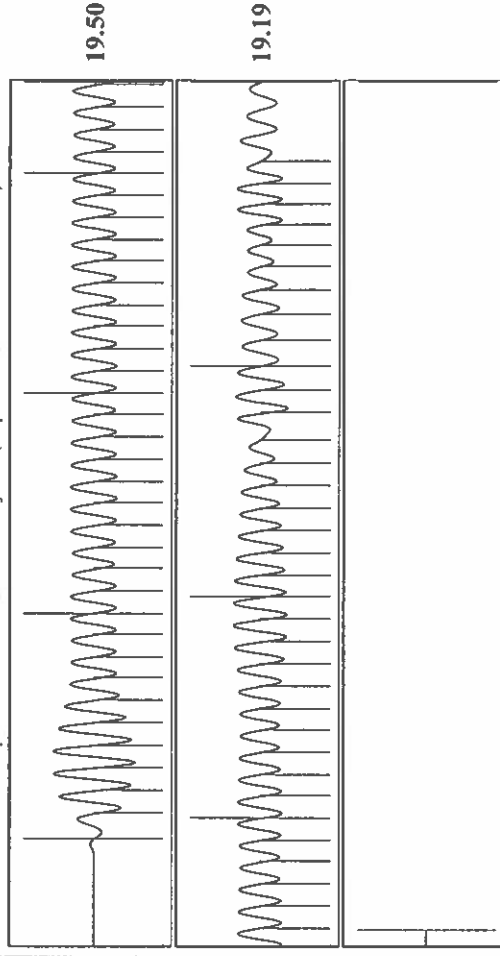
Production	Potential	Casing Pressure	Producing
Oil - * -	- * - BBL/D	0.8 psi (g)	Annular Gas Flow 2 Mscf/D
Water - * -	- * - BBL/D	Casing Pressure Buildup	% Liquid 100 %
Gas - * -	- * - Mscf/D	0.3 psi	
IPR Method Vogel	2.00 min	Gas/Liquid Interface Pressure	Pump Intake 139.3 psi (g)
PBHP/SBHP - * -	1.9 psi (g)	Liquid Level Depth	Producing BHP 1.8 psi (g)
Production Efficiency 0.0		2476.04 ft	Static BHP - * - psi (g)
Oil 40 deg API		Pump Intake Depth	
Water 1.05 Sp.Gr:H2O		2882.00 ft	
Gas 0.78 Sp.Gr:AIR		Formation Depth	
Acoustic Velocity 1226.07 ft/s		2457.00 ft	
Formation Submergence			
Total Gaseous Liquid Column HT (TVD) 406 ft			
Equivalent Gas Free Liquid HT (TVD) 406 ft			
Acoustic Test			

Group: Route 4 Well: Garden City K-3 (acquired on: 05/02/19 12:59:26)



Change in Pressure 0.34 psi PT 6902 Range  
 Change in Time 2.00 min

Group: Route 4 Well: Garden City K-3 (acquired on: 05/02/19 12:59:26)



Acoustic Velocity 1226.07 ft/s Joints counted 69  
 Joints Per Second 19.3386 Jts/sec 78.1085  
 Depth to Liquid level 2476.04 ft Filter Width 20.3824  
 Automatic Collar Count Yes Time to 1st Collar 3.816

June 11, 2019

Katherine McClurkan  
Merit Energy Company, LLC  
13727 Noel Road, Suite 1200  
Dallas, TX 75240-7362

Re: Temporary Abandonment  
API 15-055-21899-00-01  
Garden City K 3  
NE/4 Sec.26-23S-34W  
Finney County, Kansas

Dear Katherine McClurkan:

"Your temporary abandonment (TA) application for the well listed above has been approved. In accordance with K.A.R. 82-3-111 the TA status of this well will expire 06/11/2020.

- \* If you return this well to service or plug it, please notify the District Office.
- \* If you sell this well you are required to file a Transfer of Operator form, T-1.
- \* If the well will remain temporarily abandoned, you must submit a new TA application, CP-111, before 06/11/2020.

You may contact me at the number above if you have questions.

Very truly yours,

Michael Maier"