

KANSAS CORPORATION COMMISSION  
OIL & GAS CONSERVATION DIVISION

TEMPORARY ABANDONMENT WELL APPLICATION

OPERATOR: License# \_\_\_\_\_  
 Name: \_\_\_\_\_  
 Address 1: \_\_\_\_\_  
 Address 2: \_\_\_\_\_  
 City: \_\_\_\_\_ State: \_\_\_\_\_ Zip: \_\_\_\_\_ + \_\_\_\_\_  
 Contact Person: \_\_\_\_\_  
 Phone: ( \_\_\_\_\_ ) \_\_\_\_\_  
 Contact Person Email: \_\_\_\_\_  
 Field Contact Person: \_\_\_\_\_  
 Field Contact Person Phone: ( \_\_\_\_\_ ) \_\_\_\_\_

API No. 15- \_\_\_\_\_  
 Spot Description: \_\_\_\_\_  
 \_\_\_\_\_ - \_\_\_\_\_ - \_\_\_\_\_ - \_\_\_\_\_ Sec. \_\_\_\_\_ Twp. \_\_\_\_\_ S. R. \_\_\_\_\_  E  W  
 \_\_\_\_\_ feet from  N /  S Line of Section  
 \_\_\_\_\_ feet from  E /  W Line of Section  
 GPS Location: Lat: \_\_\_\_\_, Long: \_\_\_\_\_  
(e.g. xx.xxxxx) (e.g. -xxx.xxxxx)  
 Datum:  NAD27  NAD83  WGS84  
 County: \_\_\_\_\_ Elevation: \_\_\_\_\_  GL  KB  
 Lease Name: \_\_\_\_\_ Well #: \_\_\_\_\_  
 Well Type: (check one)  Oil  Gas  OG  WSW  Other: \_\_\_\_\_  
 SWD Permit #: \_\_\_\_\_  ENHR Permit #: \_\_\_\_\_  
 Gas Storage Permit #: \_\_\_\_\_  
 Spud Date: \_\_\_\_\_ Date Shut-In: \_\_\_\_\_

	Conductor	Surface	Production	Intermediate	Liner	Tubing
Size						
Setting Depth						
Amount of Cement						
Top of Cement						
Bottom of Cement						

Casing Fluid Level from Surface: \_\_\_\_\_ How Determined? \_\_\_\_\_ Date: \_\_\_\_\_  
 Casing Squeeze(s): \_\_\_\_\_ to \_\_\_\_\_ w / \_\_\_\_\_ sacks of cement, \_\_\_\_\_ to \_\_\_\_\_ w / \_\_\_\_\_ sacks of cement. Date: \_\_\_\_\_  
(top) (bottom) (top) (bottom)  
 Do you have a valid Oil & Gas Lease?  Yes  No  
 Depth and Type:  Junk in Hole at \_\_\_\_\_  Tools in Hole at \_\_\_\_\_ Casing Leaks:  Yes  No Depth of casing leak(s): \_\_\_\_\_  
(depth) (depth)  
 Type Completion:  ALT. I  ALT. II Depth of:  DV Tool: \_\_\_\_\_ w / \_\_\_\_\_ sacks of cement  Port Collar: \_\_\_\_\_ w / \_\_\_\_\_ sack of cement  
(depth) (depth)  
 Packer Type: \_\_\_\_\_ Size: \_\_\_\_\_ Inch Set at: \_\_\_\_\_ Feet  
 Total Depth: \_\_\_\_\_ Plug Back Depth: \_\_\_\_\_ Plug Back Method: \_\_\_\_\_

**Geological Data:**

Formation Name	Formation Top	Formation Base	Completion Information
1. _____	At: _____	to _____ Feet	Perforation Interval _____ to _____ Feet or Open Hole Interval _____ to _____ Feet
2. _____	At: _____	to _____ Feet	Perforation Interval _____ to _____ Feet or Open Hole Interval _____ to _____ Feet

UNDER PENALTY OF PERJURY I HEREBY ATTEST THAT THE INFORMATION CONTAINED HEREIN IS TRUE AND CORRECT TO THE BEST OF MY KNOWLEDGE

Submitted Electronically

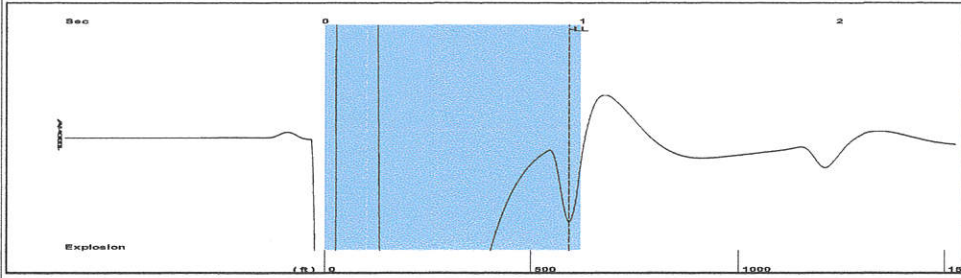
<b>Do NOT Write in This Space - KCC USE ONLY</b>	Date Tested: _____	Results: _____	Date Plugged: _____	Date Repaired: _____	Date Put Back in Service: _____
	Review Completed by: _____ Comments: _____				
TA Approved: <input type="checkbox"/> Yes <input type="checkbox"/> Denied Date: _____					

Mail to the Appropriate KCC Conservation Office:

	KCC District Office #1 - 210 E. Frontview, Suite A, Dodge City, KS 67801	Phone 620.682.7933
	KCC District Office #2 - 3450 N. Rock Road, Building 600, Suite 601, Wichita, KS 67226	Phone 316.337.7400
	KCC District Office #3 - 137 E. 21st St., Chanute, KS 66720	Phone 620.902.6450
	KCC District Office #4 - 2301 E. 13th Street, Hays, KS 67601-2651	Phone 785.261.6250

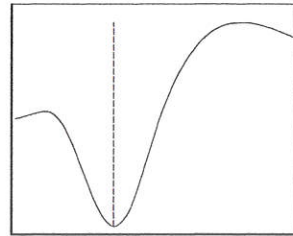
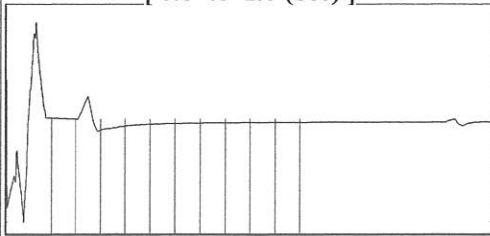
**SHOT THRU CASING**

Group: TA'D WELLS Well: JF SCHROEDER 3-16 (acquired on: 06/21/19 12:23:58 )



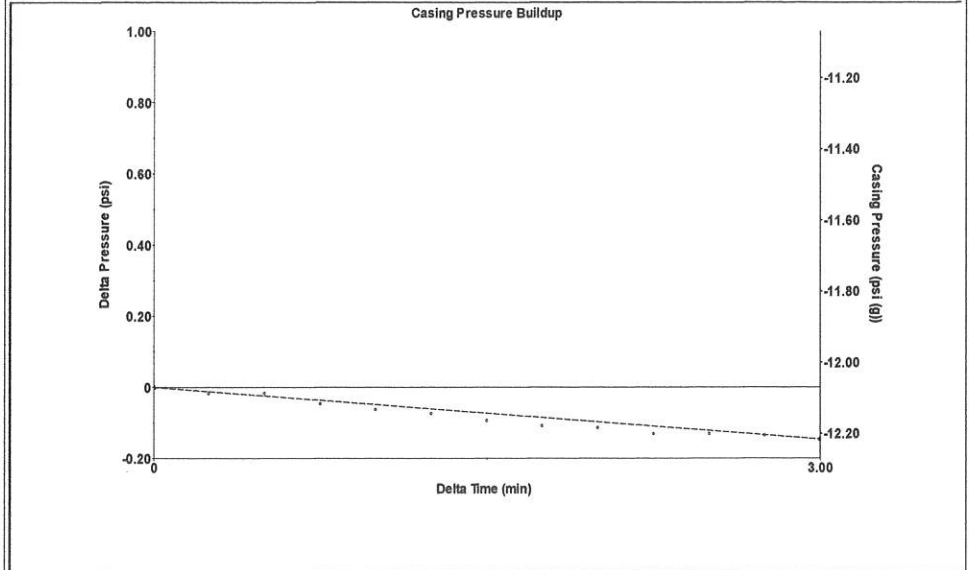
Filter Type High Pass Automatic Collar Count Yes Time 0.95 sec  
 Manual Acoustic Velo 1245.58 ft/s Manual JTS/sec 19.6464 Joints 18.664 Jts  
 Depth 591.65 ft

[ 0.0 to 1.0 (Sec) ]



**Analysis Method: Automatic**

Group: TA'D WELLS Well: JF SCHROEDER 3-16 (acquired on: 06/21/19 12:23:58 )



Change in Pressure -0.15 psi PT16755  
 Change in Time 3.00 min Range 0 - ? psi

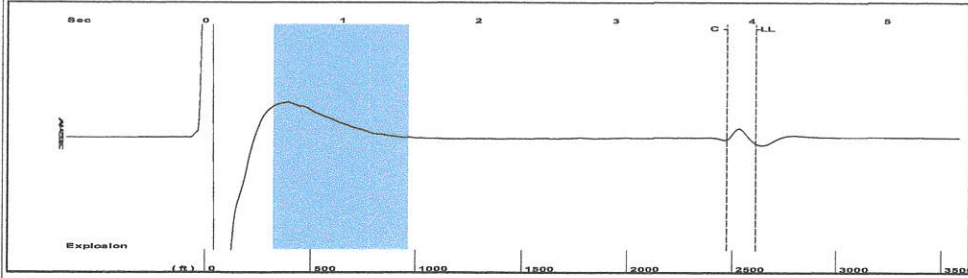
Group: TA'D WELLS Well: JF SCHROEDER 3-16 (acquired on: 06/21/19 12:23:58 )

Production Current	Potential	Casing Pressure		Producing	
Oil - * -	- * - BBL/D	-12.1 psi (g)		Annular Gas Flow	- * - Mscf/D
Water - * -	- * - BBL/D	Casing Pressure Buildup		% Liquid	100 %
Gas - * -	- * - Mscf/D	-0.146 psi			
IPR Method	Vogel	3.00 min			
PBHP/SBHP	- * -	Gas/Liquid Interface Pressure			
Production Efficiency	0.0	-12.0 psi (g)			
Oil 40 deg.API		Liquid Level Depth			
Water 1.05 Sp.Gr.H2O		591.65 ft			
Gas 0.73 Sp.Gr.AIR		Pump Intake Depth			
Acoustic Velocity 1245.58 ft/s		- * - ft			
		Formation Depth			
		2400.00 ft			
Formation Submergence			Pump Intake	- * - psi (g)	
Total Gaseous Liquid Column HT (TVD)	1808 ft		Producing BHP	810.1 psi (g)	
Equivalent Gas Free Liquid HT (TVD)	1808 ft		Static BHP	- * - psi (g)	
Acoustic Test					

Group: TA'D WELLS Well: JF SCHROEDER 3-16 (acquired on: 06/21/19 12:23:58 )

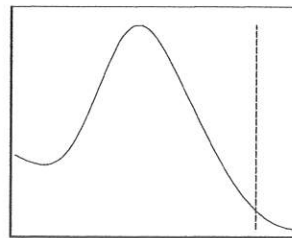
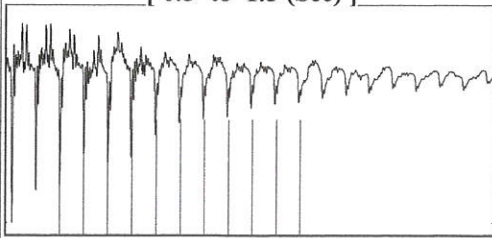
**No Collar Count Data Available**

Group: TA'D WELLS Well: TJ ISOM 1 (acquired on: 06/21/19 09:40:00 )



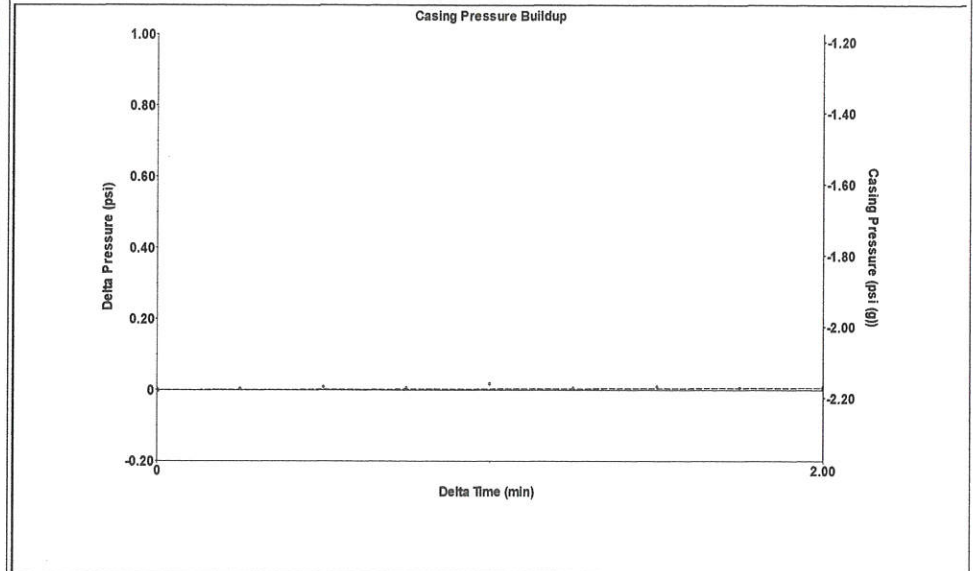
Filter Type High Pass Automatic Collar Count Yes Time 4.033 sec  
 Manual Acoustic Velo 1293.88 ft/s Manual JTS/sec 20.4082 Joints 82.4213 Jts  
 Depth 2612.76 ft

[ 0.5 to 1.5 (Sec) ]



Analysis Method: Automatic

Group: TA'D WELLS Well: TJ ISOM 1 (acquired on: 06/21/19 09:40:00 )



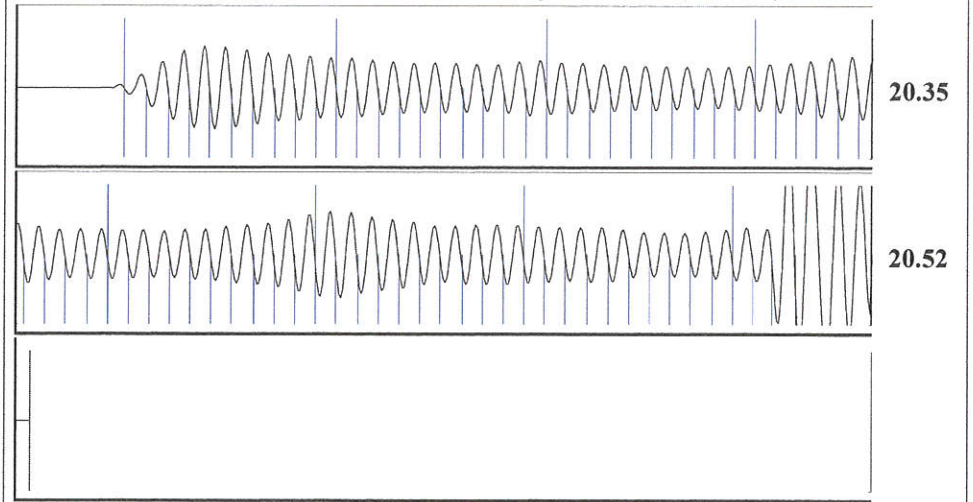
Change in Pressure 0.01 psi PT16755  
 Change in Time 2.00 min Range 0 - ? psi

Group: TA'D WELLS Well: TJ ISOM 1 (acquired on: 06/21/19 09:40:00 )

<b>Production</b>	<b>Potential</b>	<b>Casing Pressure</b>	<b>Producing</b>
Current		-2.2 psi (g)	
Oil - * -	- * - BBL/D	<b>Casing Pressure Buildup</b>	<b>Annular Gas Flow</b>
Water - * -	- * - BBL/D	0.006 psi	0 Mscf/D
Gas - * -	- * - Mscf/D	2.00 min	<b>% Liquid</b>
		<b>Gas/Liquid Interface Pressure</b>	100 %
<b>IPR Method</b>	<b>Vogel</b>	-1.4 psi (g)	
PBHP/SBHP - * -		<b>Liquid Level Depth</b>	
Production Efficiency 0.0		2612.76 ft	
		<b>Pump Intake Depth</b>	
Oil 40 deg.API		- * - ft	
Water 1.05 Sp.Gr.H2O		<b>Formation Depth</b>	
Gas 0.71 Sp.Gr.AIR		2648.00 ft	
<b>Acoustic Velocity</b> 1295.69 ft/s			
		<b>Pump Intake</b>	
		- * - psi (g)	
<b>Formation Submergence</b>		<b>Producing BHP</b>	
Total Gaseous Liquid Column HT (TVD) 35 ft		14.6 psi (g)	
Equivalent Gas Free Liquid HT (TVD) 35 ft		<b>Static BHP</b>	
		- * - psi (g)	



Group: TA'D WELLS Well: TJ ISOM 1 (acquired on: 06/21/19 09:40:00 )



Acoustic Velocity 1295.69 ft/s Joints counted 73  
 Joints Per Second 20.4367 jts/sec Joints to liquid level 82.4213  
 Depth to liquid level 2612.76 ft Filter Width 18.4082 22.4082  
 Automatic Collar Count Yes Time to 1st Collar 0.248 3.82

July 02, 2019

Katherine McClurkan  
Merit Energy Company, LLC  
13727 Noel Road, Suite 1200  
Dallas, TX 75240-7362

Re: Temporary Abandonment  
API 15-129-21397-00-00  
J F Schroeder (TBM) 16-3  
NW/4 Sec.16-35S-40W  
Morton County, Kansas

Dear Katherine McClurkan:

"Your temporary abandonment (TA) application for the well listed above has been approved. In accordance with K.A.R. 82-3-111 the TA status of this well will expire 07/02/2020.

- \* If you return this well to service or plug it, please notify the District Office.
- \* If you sell this well you are required to file a Transfer of Operator form, T-1.
- \* If the well will remain temporarily abandoned, you must submit a new TA application, CP-111, before 07/02/2020.

You may contact me at the number above if you have questions.

Very truly yours,

Scott Alberg"