

KANSAS CORPORATION COMMISSION
OIL & GAS CONSERVATION DIVISION

TEMPORARY ABANDONMENT WELL APPLICATION

OPERATOR: License#
Name:
Address 1:
Address 2:
City: State: Zip:
Contact Person:
Phone:
Contact Person Email:
Field Contact Person:
Field Contact Person Phone:

API No. 15-
Spot Description:
Sec. Twp. S. R.
GPS Location: Lat: Long:
Datum: NAD27 NAD83 WGS84
County: Elevation:
Lease Name: Well #:
Well Type: Oil Gas OG WSW Other:
SWD Permit #: ENHR Permit #:
Gas Storage Permit #:
Spud Date: Date Shut-In:

Table with 7 columns: Conductor, Surface, Production, Intermediate, Liner, Tubing. Rows include Size, Setting Depth, Amount of Cement, Top of Cement, Bottom of Cement.

Casing Fluid Level from Surface: How Determined? Date:
Casing Squeeze(s): to w / sacks of cement, to w / sacks of cement. Date:
Do you have a valid Oil & Gas Lease? Yes No
Depth and Type: Junk in Hole at Tools in Hole at Casing Leaks: Yes No Depth of casing leak(s):
Type Completion: ALT. I ALT. II Depth of: DV Tool: w / sacks of cement Port Collar: w / sack of cement
Packer Type: Size: Inch Set at: Feet
Total Depth: Plug Back Depth: Plug Back Method:

Geological Data:

Table with 4 columns: Formation Name, Formation Top, Formation Base, Completion Information. Rows 1 and 2.

UNDER PENALTY OF PERJURY I HEREBY ATTEST THAT THE INFORMATION CONTAINED HEREIN IS TRUE AND CORRECT TO THE BEST OF MY KNOWLEDGE

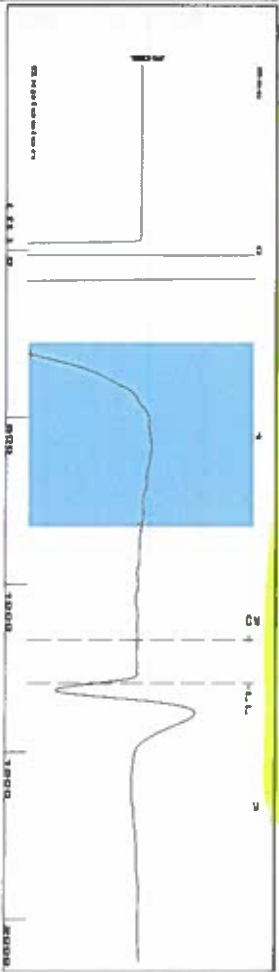
Submitted Electronically

Do NOT Write in This Space - KCC USE ONLY
Date Tested: Results: Date Plugged: Date Repaired: Date Put Back in Service:
Review Completed by: Comments:
TA Approved: Yes Denied Date:

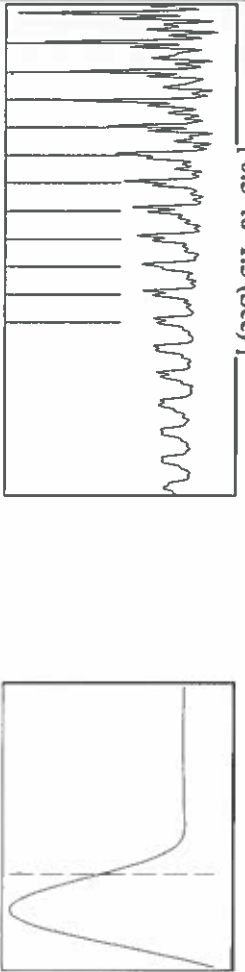
Mail to the Appropriate KCC Conservation Office:

Table with 3 columns: District Office, Address, Phone. Rows for District Office #1, #2, #3, #4.

Group: Liberal TAD Wells Well: Liberal 2-6 (acquired on: 06/21/19 12:48:35 )



Filter Type High Pass Automatic Collar Count Yes  
 Manual Acoustic Velocity 112.28 ft/s Manual JTS/sec 17.5439  
 Time 2.335 sec  
 Joints 40.786 Jts  
 Depth 1292.92 ft



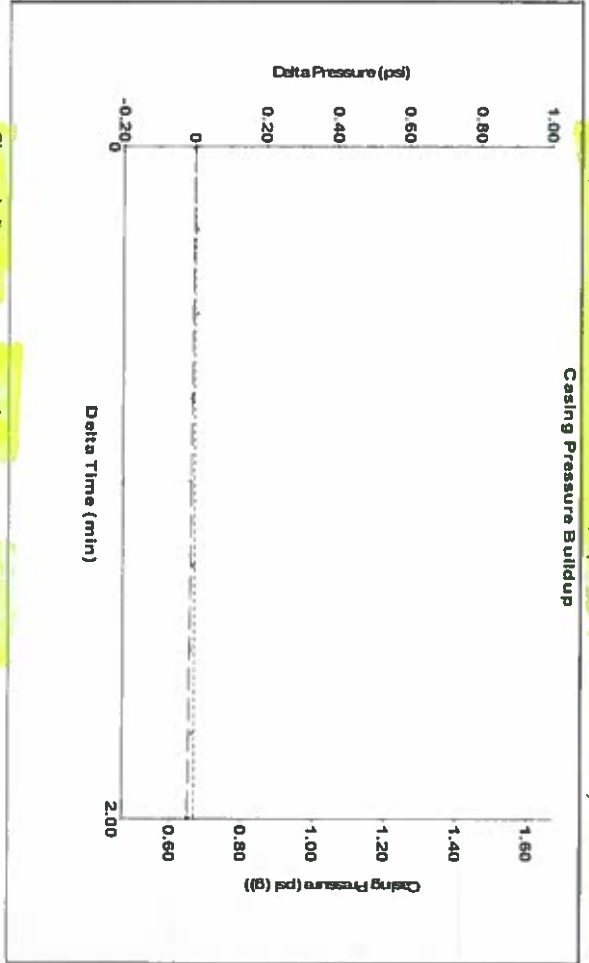
Analysis Method: Automatic

Group: Liberal TAD Wells Well: Liberal 2-6 (acquired on: 06/21/19 12:48:35 )

Production Current	Potential	Casing Pressure	0.7 psi (g)	Static
Oil	BBL/D	Casing Pressure Buildup	-0.017 psi	Oil Column Height MD 0 ft
Water	BBL/D	Gas/Liquid Interface Pressure	2.00 min	Water Column Height MD 5337 ft
Gas	Mscf/D		1.3 psi (g)	Static BHP 2427.8 psi (g)
IPR Method PBHP/SBHP	Vogel	Liquid Level Depth	1292.92 ft	
Production Efficiency	0.0	Pump Intake Depth	6630.00 ft	
Oil 40 deg API		Formation Depth	6630.00 ft	
Water 1.05 Sp.Gr.H2O				
Gas 0.86 Sp.Gr.AIR				
Acoustic Velocity	1107.42 ft/s			

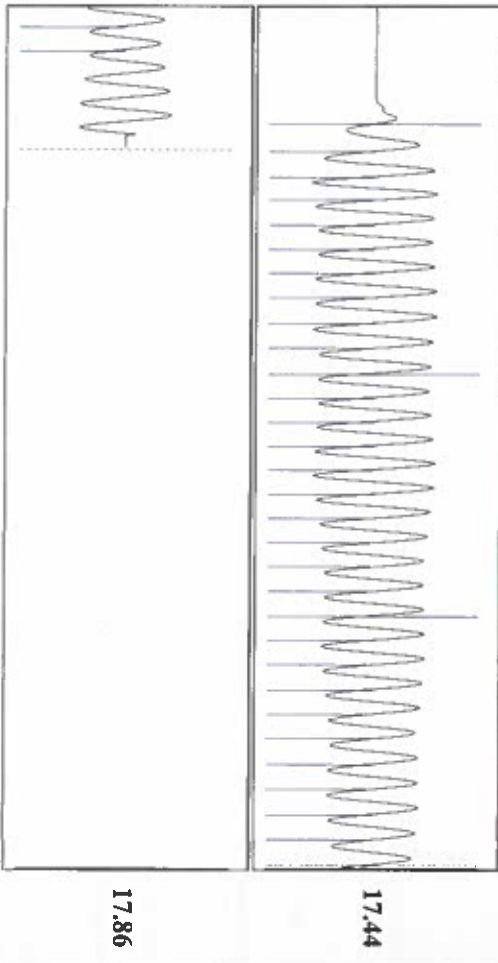


Group: Liberal TAD Wells Well: Liberal 2-6 (acquired on: 06/21/19 12:48:35 )



Change in Pressure -0.02 psi  
 Change in Time 2.00 min  
 PT11249 Range

Group: Liberal TAD Wells Well: Liberal 2-6 (acquired on: 06/21/19 12:48:35 )



Acoustic Velocity 1107.42 ft/s  
 Joints Per Second 17.4672 Jts/sec  
 Depth to liquid level 1292.92 ft  
 Automatic Collar Count Yes  
 Joints counted 32  
 Joints to liquid level 40.786  
 Filter Width 15.5439  
 Time to 1st Collar 0.272

17.86

17.44

*Handwritten signature: Mark Q. Cook*

June 25, 2019

Katherine McClurkan  
Merit Energy Company, LLC  
13727 Noel Road, Suite 1200  
Dallas, TX 75240-7362

Re: Temporary Abandonment  
API 15-175-21216-00-00  
Liberal 2-6  
NE/4 Sec.06-35S-33W  
Seward County, Kansas

Dear Katherine McClurkan:

"Your temporary abandonment (TA) application for the well listed above has been approved. In accordance with K.A.R. 82-3-111 the TA status of this well will expire 06/25/2020.

- \* If you return this well to service or plug it, please notify the District Office.
- \* If you sell this well you are required to file a Transfer of Operator form, T-1.
- \* If the well will remain temporarily abandoned, you must submit a new TA application, CP-111, before 06/25/2020.

You may contact me at the number above if you have questions.

Very truly yours,

Michael Maier"