

KANSAS CORPORATION COMMISSION
OIL & GAS CONSERVATION DIVISION

TEMPORARY ABANDONMENT WELL APPLICATION

OPERATOR: License#
Name:
Address 1:
Address 2:
City: State: Zip:
Contact Person:
Phone:
Contact Person Email:
Field Contact Person:
Field Contact Person Phone:

API No. 15-
Spot Description:
Sec. Twp. S. R.
GPS Location: Lat: Long:
Datum: NAD27 NAD83 WGS84
County: Elevation:
Lease Name: Well #:
Well Type: Oil Gas OG WSW Other:
SWD Permit #: ENHR Permit #:
Gas Storage Permit #:
Spud Date: Date Shut-In:

Table with 7 columns: Conductor, Surface, Production, Intermediate, Liner, Tubing. Rows include Size, Setting Depth, Amount of Cement, Top of Cement, Bottom of Cement.

Casing Fluid Level from Surface: How Determined? Date:
Casing Squeeze(s): to w / sacks of cement, to w / sacks of cement. Date:
Do you have a valid Oil & Gas Lease? Yes No
Depth and Type: Junk in Hole at Tools in Hole at Casing Leaks: Yes No Depth of casing leak(s):
Type Completion: ALT. I ALT. II Depth of: DV Tool: w / sacks of cement Port Collar: w / sack of cement
Packer Type: Size: Inch Set at: Feet
Total Depth: Plug Back Depth: Plug Back Method:

Geological Data:

Table with 4 columns: Formation Name, Formation Top, Formation Base, Completion Information. Rows 1 and 2.

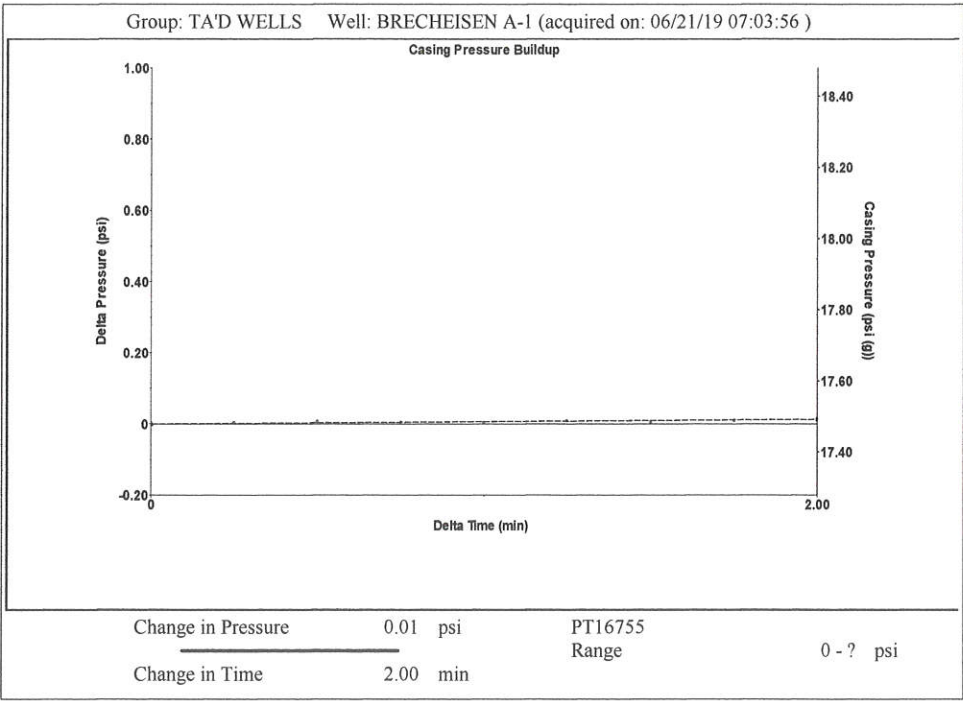
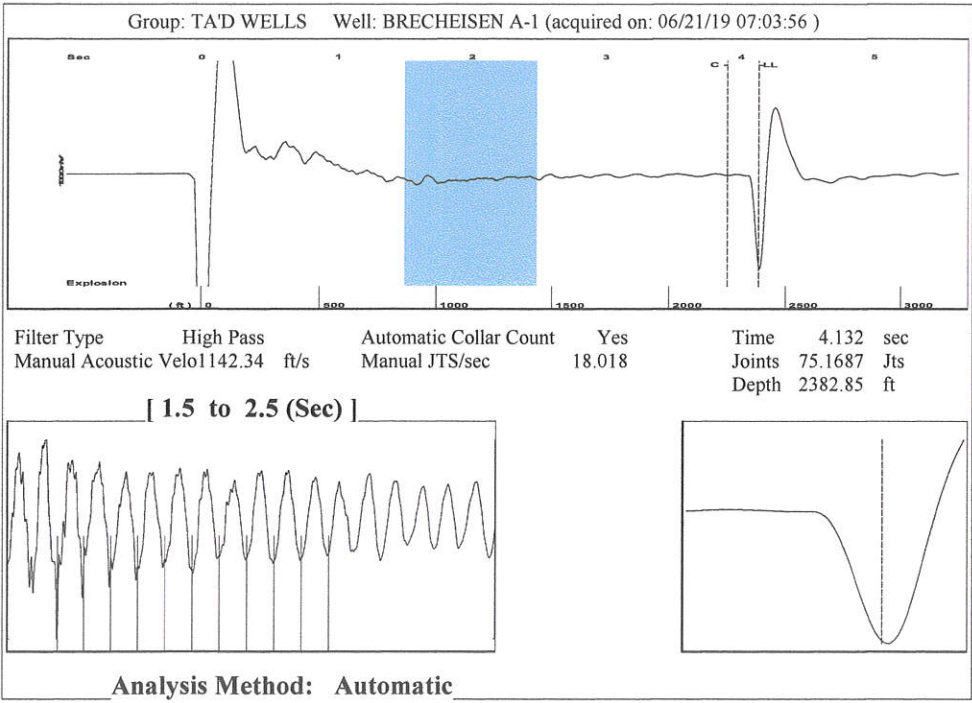
UNDER PENALTY OF PERJURY I HEREBY ATTEST THAT THE INFORMATION CONTAINED HEREIN IS TRUE AND CORRECT TO THE BEST OF MY KNOWLEDGE

Submitted Electronically

Do NOT Write in This Space - KCC USE ONLY
Date Tested: Results: Date Plugged: Date Repaired: Date Put Back in Service:
Review Completed by: Comments:
TA Approved: Yes Denied Date:

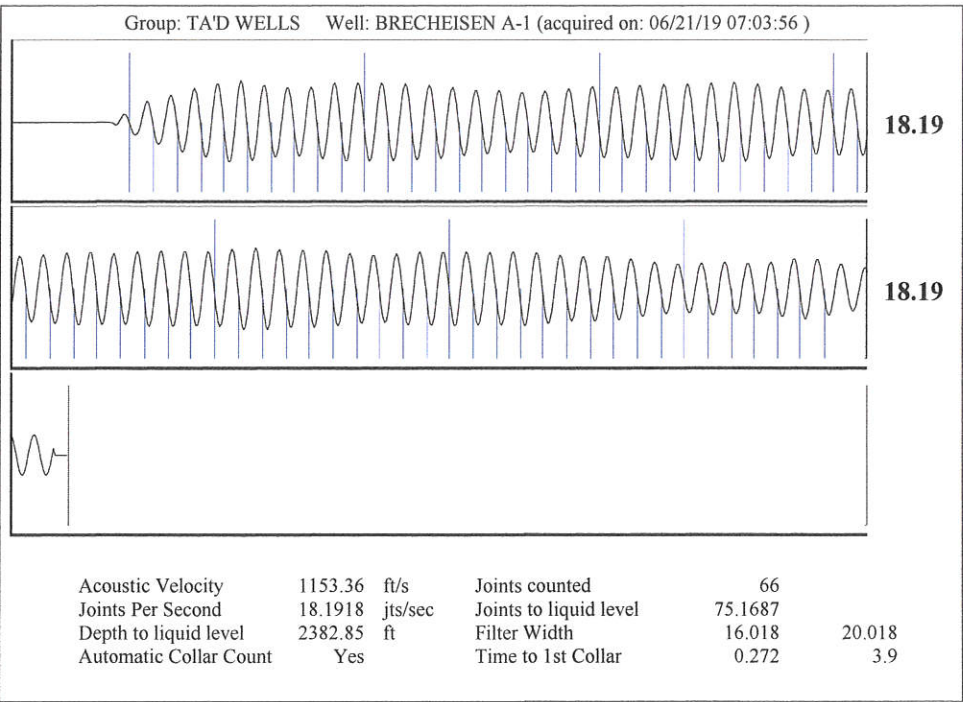
Mail to the Appropriate KCC Conservation Office:

Map of Kansas with 4 numbered districts. Table with 3 columns: District Office Name, Address, Phone Number.



Group: TA'D WELLS Well: BRECHEISEN A-1 (acquired on: 06/21/19 07:03:56)

Production Current	Potential	Casing Pressure	Producing
Oil - * -	- * - BBL/D	17.5 psi (g)	Annular Gas Flow - * - Mscf/D
Water - * -	- * - BBL/D	Casing Pressure Buildup 0.013 psi	% Liquid 100 %
Gas - * -	- * - Mscf/D	2.00 min	
IPR Method Vogel		Gas/Liquid Interface Pressure 19.7 psi (g)	
PBHP/SBHP - * -		Liquid Level Depth 2382.85 ft	
Production Efficiency 0.0		Pump Intake Depth - * - ft	
Oil 40 deg.API		Formation Depth 6240.00 ft	
Water 1.05 Sp.Gr.H2O			
Gas 0.82 Sp.Gr.AIR			
Acoustic Velocity 1153.36 ft/s			
Formation Submergence		Pump Intake - * - psi (g)	
Total Gaseous Liquid Column HT (TVD) 3857 ft		Producing BHP 1773.4 psi (g)	
Equivalent Gas Free Liquid HT (TVD) 3857 ft		Static BHP - * - psi (g)	
Acoustic Test			



June 25, 2019

Katherine McClurkan
Merit Energy Company, LLC
13727 Noel Road, Suite 1200
Dallas, TX 75240-7362

Re: Temporary Abandonment
API 15-189-21919-00-00
Brecheisen A 1
SW/4 Sec.16-35S-38W
Stevens County, Kansas

Dear Katherine McClurkan:

"Your temporary abandonment (TA) application for the well listed above has been approved. In accordance with K.A.R. 82-3-111 the TA status of this well will expire 06/25/2020.

- * If you return this well to service or plug it, please notify the District Office.
- * If you sell this well you are required to file a Transfer of Operator form, T-1.
- * If the well will remain temporarily abandoned, you must submit a new TA application, CP-111, before 06/25/2020.

You may contact me at the number above if you have questions.

Very truly yours,

Michael Maier"