

KANSAS CORPORATION COMMISSION
OIL & GAS CONSERVATION DIVISION

TEMPORARY ABANDONMENT WELL APPLICATION

OPERATOR: License#
Name:
Address 1:
Address 2:
City: State: Zip:
Contact Person:
Phone:
Contact Person Email:
Field Contact Person:
Field Contact Person Phone:

API No. 15-
Spot Description:
Sec. Twp. S. R.
GPS Location: Lat: Long:
Datum: NAD27 NAD83 WGS84
County: Elevation:
Lease Name: Well #:
Well Type: Oil Gas OG WSW Other:
SWD Permit #: ENHR Permit #:
Gas Storage Permit #:
Spud Date: Date Shut-In:

Table with 7 columns: Conductor, Surface, Production, Intermediate, Liner, Tubing. Rows include Size, Setting Depth, Amount of Cement, Top of Cement, Bottom of Cement.

Casing Fluid Level from Surface: How Determined? Date:
Casing Squeeze(s): to w / sacks of cement, to w / sacks of cement. Date:
Do you have a valid Oil & Gas Lease? Yes No
Depth and Type: Junk in Hole at Tools in Hole at Casing Leaks: Yes No Depth of casing leak(s):
Type Completion: ALT. I ALT. II Depth of: DV Tool: w / sacks of cement Port Collar: w / sack of cement
Packer Type: Size: Inch Set at: Feet
Total Depth: Plug Back Depth: Plug Back Method:

Geological Data:

Table with 4 columns: Formation Name, Formation Top, Formation Base, Completion Information. Rows 1 and 2.

UNDER PENALTY OF PERJURY I HEREBY ATTEST THAT THE INFORMATION CONTAINED HEREIN IS TRUE AND CORRECT TO THE BEST OF MY KNOWLEDGE

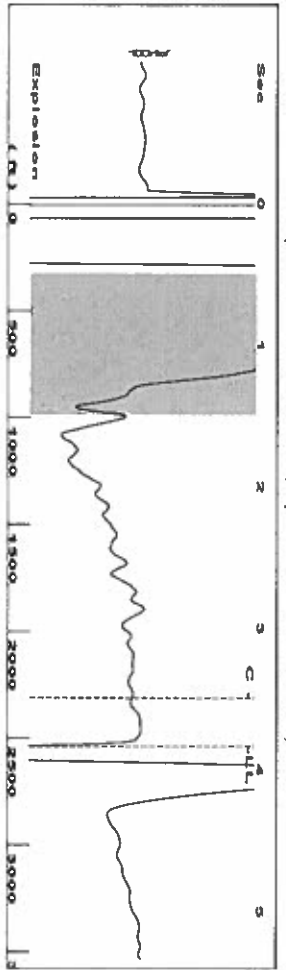
Submitted Electronically

Do NOT Write in This Space - KCC USE ONLY
Date Tested: Results: Date Plugged: Date Repaired: Date Put Back in Service:
Review Completed by: Comments:
TA Approved: Yes Denied Date:

Mail to the Appropriate KCC Conservation Office:

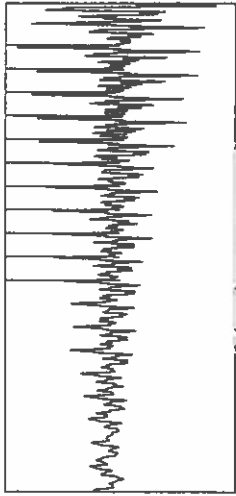
Map of Kansas with 4 numbered districts and corresponding office addresses and phone numbers.

Group: TAD Well: ohmes 2-22 (acquired on: 06/21/19 12:14:54)

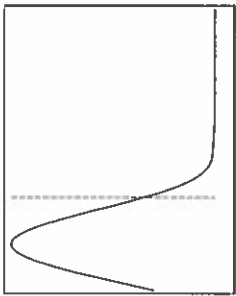


Filter Type High Pass
Manual Acoustic Velocity 1315.35 ft/s
Automatic Collar Count Yes
Manual JTS/sec 20.7469

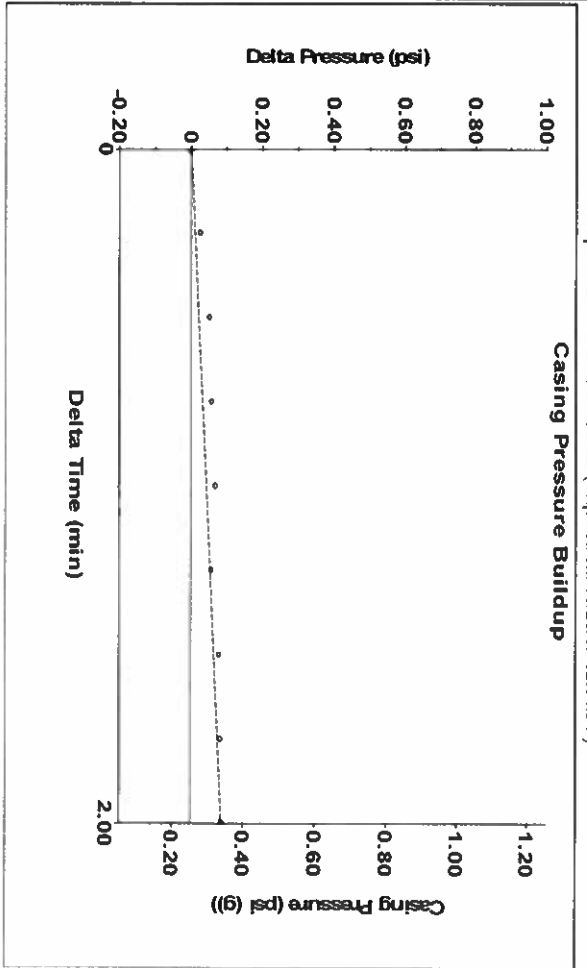
Time 3.833 sec
Joints 80.0594 Jts
Depth 2537.88 ft



Analysis Method: Automatic



Group: TAD Well: ohmes 2-22 (acquired on: 06/21/19 12:14:54)

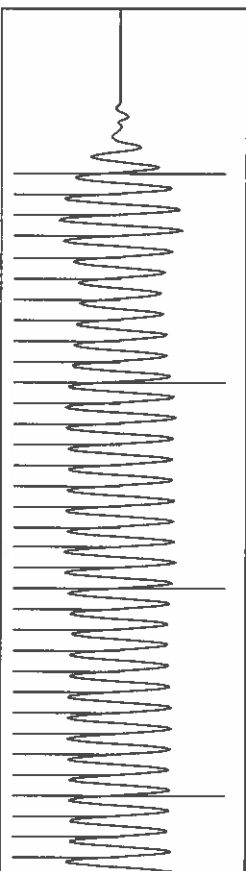


Change in Pressure 0.09 psi
Change in Time 2.00 min

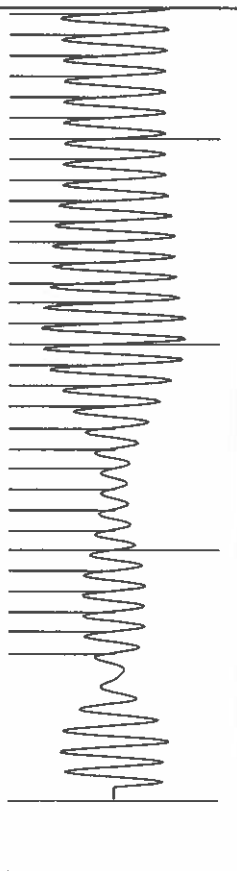
PT 6902
Range

0 - ? psi

Group: TAD Well: ohmes 2-22 (acquired on: 06/21/19 12:14:54)



20.83



20.94



Producing

Annular Gas Flow 1 Mscf/D
% Liquid 97 %

Pump Intake 85.6 psi (g)
Producing BHP 44.9 psi (g)
Static BHP - * - psi (g)

Group: TAD Well: ohmes 2-22 (acquired on: 06/21/19 12:14:54)

Production	Potential	Casing Pressure	Producing
Oil - * -	- * - BBL/D	0.3 psi (g)	Annular Gas Flow 1 Mscf/D
Water - * -	- * - BBL/D	0.1 psi	% Liquid 97 %
Gas - * -	- * - Mscf/D	2.00 min	
		Gas/Liquid Interface Pressure 1.1 psi (g)	
IPR Method PBHP/SBHP	Vogel - * -		
Production Efficiency 0.0			
Oil 40 deg API		Liquid Level Depth 2537.88 ft	
Water 1.05 Sp.Gr. H2O		Pump Intake Depth 2793.00 ft	
Gas 0.69 Sp.Gr. AIR		Formation Depth 2672.00 ft	
Acoustic Velocity 1324.23 ft/s			

Formation Submergence
Total Gaseous Liquid Column HT (TVD)
Equivalent Gas Free Liquid HT (TVF)

255 ft
250 ft

Acoustic Test

Acoustic Velocity 1324.23 ft/s
Joints Per Second 20.8869 Jts/Sec
Depth to liquid level 2537.88 ft
Automatic Collar Count Yes

Joints counted 65
Joints to liquid level 80.0594
Filter Width 18.7469
Time to 1st Collar 0.38

22.7469
3.492

July 02, 2019

Katherine McClurkan
Merit Energy Company, LLC
13727 Noel Road, Suite 1200
Dallas, TX 75240-7362

Re: Temporary Abandonment
API 15-055-20835-00-01
OMES 2-22
NW/4 Sec.22-26S-32W
Finney County, Kansas

Dear Katherine McClurkan:

"Your temporary abandonment (TA) application for the well listed above has been approved. In accordance with K.A.R. 82-3-111 the TA status of this well will expire 07/02/2020.

- * If you return this well to service or plug it, please notify the District Office.
- * If you sell this well you are required to file a Transfer of Operator form, T-1.
- * If the well will remain temporarily abandoned, you must submit a new TA application, CP-111, before 07/02/2020.

You may contact me at the number above if you have questions.

Very truly yours,

Scott Alberg"