

WF



PAGE	CUST NO	YARD #	INVOICE DATE
1 of 1	1000335	1718	03/15/2019
INVOICE NUMBER			
92930405			

Pratt (620) 672-1201
 B BEREXCO LLC
 I 2020 N BRAMBLEWOOD
 L WICHITA
 L KS US 67206
 T
 O ATTN: VICKEY LOVETTE

J LEASE NAME Melodie 1-20
 O LOCATION
 B COUNTY : Finney
 S STATE : KS
 I JOB DESCRIPTION : Cement-New Well Casing/Pi
 T JOB CONTACT
 E

JOB #	EQUIPMENT #	PURCHASE ORDER NO.	TERMS	DUE DATE
41165789			Net - 30 days	04/14/2019

	QTY	U of M	UNIT PRICE	INVOICE AMOUNT
<i>For Service Dates: 03/14/2019 to 03/14/2019</i>				
0041165789				
171819340L Cement-New Well Casing/Pi 03/14/2019 Cement Surface Casing				
A-Serv Lite	650.00	EA	7.41	4,816.50 T
150 Sk. - Premium Plus Cement	1.00	EA	1,393.50	1,393.50 T
1980 Lb. - Calcium Chloride	1.00	LB	1,188.00	1,188.00 T
200 Lb. - Celloflake	1.00	LB	422.00	422.00 T
Guide Shoe - Regular, 8 5/8" (Blue)	1.00	EA	380.00	380.00
Flapper Type Insert Float Valves. 8 5/8"	1.00	EA	280.00	280.00
Centralizer, 8 5/8" (Blue)	3.00	EA	90.00	270.00
Top Rubber Cement Plug, 8 5/8"	1.00	EA	225.00	225.00
180 Miles - Heavy Equipment Mileage	1.00	MI	770.40	770.40
800 Sk.-Blending & Mixing Service Charge	1.00	BAG	640.00	640.00
2121 Tn/Mi-Proppant & Bulk Del. Chg.	1.00	EA	3,033.03	3,033.03
Depth Charge; 1001'-2000'	1.00	EA	855.00	855.00
Plug Container Utilization Charge	1.00	EA	142.50	142.50
60 Miles-Unit Mileage Chg	1.00	MI	154.20	154.20
"Service Supervisor, first 8 hrs on loc.	1.00	EA	99.75	99.75
Cement Data Acquisition Monitor	1.00	EA	313.50	313.50

*per bid
BCP*

PLEASE REMIT TO:	SEND OTHER CORRESPONDENCE TO:	SUB TOTAL	14,983.38
BASIC ENERGY SERVICES, LP	BASIC ENERGY SERVICES, LP	TAX	621.69
PO BOX 841903	801 CHERRY ST, STE 2100	INVOICE TOTAL	15,605.07
DALLAS, TX 75284-1903	FORT WORTH, TX 76102		



Liberal Yard #1717 - Phone 620-624-2277 - 1700 S. Country Estates Road, Liberal KS 67901

PRESSURE PUMPING

Job Log

Customer:	Berexco Inc	Cement Pump No.:	38117 19919 15HRS	Operator TRK No.:	78938	
Address:	2020 N BRAMBLEWOOD	Ticket #:	1718 19340 L	Bulk TRK No.:	27808 19883 Sam	70897 37725 Oscar
City, State, Zip:	WICHITA KS 67206	Job Type:	Z42 - Cement Surface Casing			
Service District:	1718-Liberal KS	Well Type:	OIL			
Well Name and No.:	Melodie 1-20	Well Location:	20,21,32	County:	Finney	State: Ks

Type of Cmt	Sacks	Additives	Truck Loaded On		
A-Serv Lite	650	3% Calcium Chloride, + 1/4pps Cello flake	27808 19883 Sam	Front	Back
Premium Plus Cement	150	2% Calcium Chloride, + 1/4pps Cello flake	70897 37725 Oscar	Front	Back
				Front	Back

Lead/Tail:	Weight #1 Gal.	Cu/Ft/sk	Water Requirements	CU. FT.	Man Hours / Personnel	
Lead:	12.3	2.08	11.52	1352	TT Man Hours:	64
Tail:	14.8	1.34	6.33	201	# of Men on Job:	4

Time (am/pm)	(BPM)	Volume (BBLs)	Pumps		Pressure (PSI)		Description of Operation and Materials
			T	C	Tubing	Casing	
7:45am							Arrived at location
13:30pm							Rig up/Prime up pump
14:00pm							Safety meeting
14:14pm						1500	Pressure test lines to 1500 psi
14:16pm	6	240.8				180	Pump lead 240.8 bbls from 650sks @ 12.3#
14:51pm	6	35.8				180	Pump tail 35.8 bbls from 150sks @ 14.8#
15:01pm							Shut down/drop plug/wash pump and lines
15:02pm							Start displacement of 111.4bbls with fresh water
15:06pm	6	20				150	20bbls gone
15:10pm	6	40				210	40bbls gone
15:14pm	6	60				300	60bbls gone
15:18pm	6	80				450	80bbls gone
15:21pm	6	100				530	100bbls gone/slow down rate to bpm
15:24pm	3	111.4				1000	Bump plug
							Check if float holds
							Got 100bbls of cement to surface
							Rig down
							Job completed

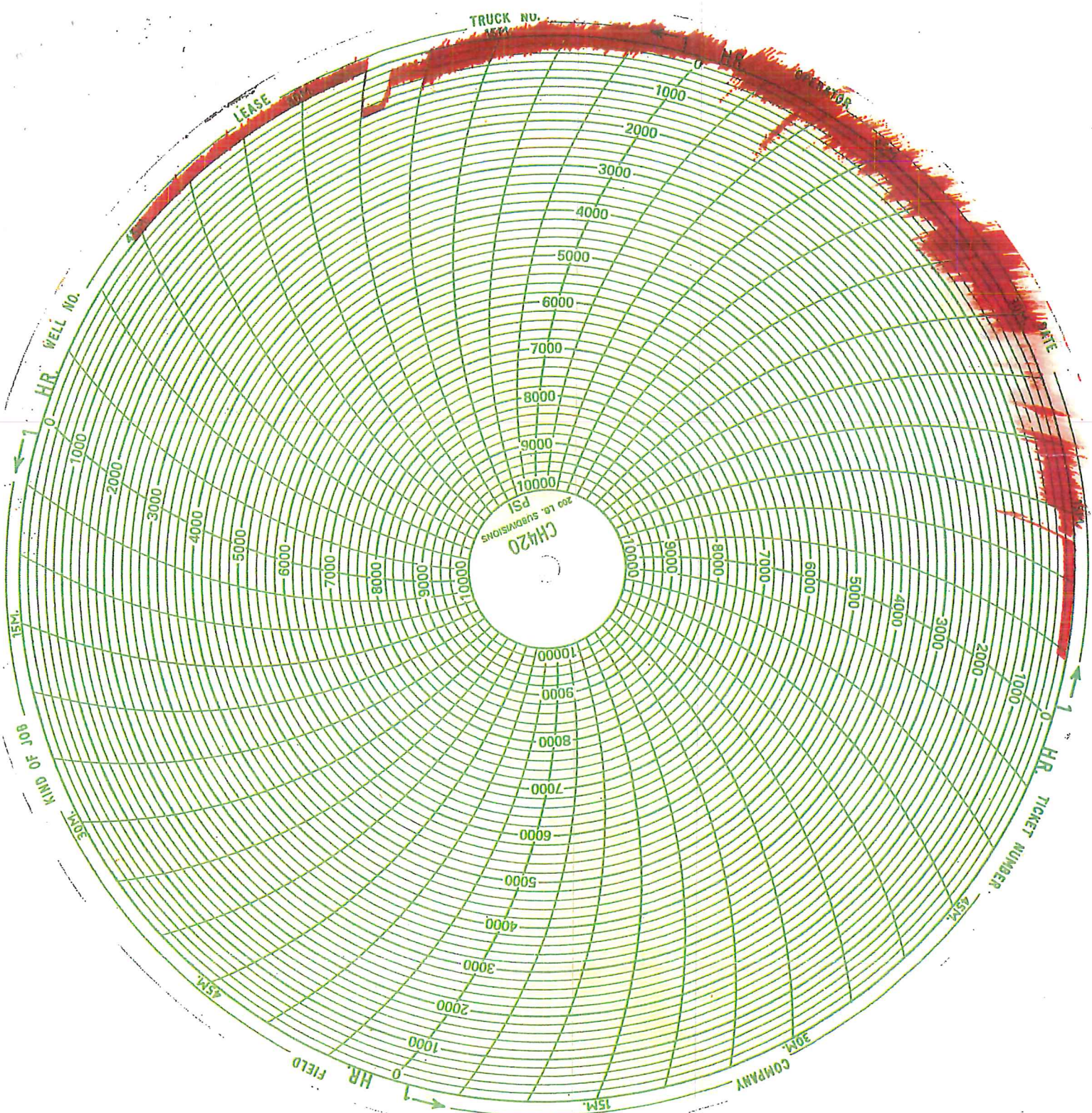
Size Hole	12 1/4	Depth	1802 feet		TYPE	
Size & Wt. Csg.	8 5/8 24#	Depth	1792	New / Used	Insert float	1749.8
Shoe Joint	42 1/5	Depth			Retainer	Depth
Top Plugs		Type			Perfs	CIBP

Customer Signature: *Walter Brown*

Basic Representative: Victor A. Corona

Basic Signature: *Victor A. Corona*

Date of Service: 3/14/2019



03-14-18
 Peraco Inc
 Melodie 1-20
 Finney, KS
 Cement Surface Casing