

T24S, R32W, 6th P.M.

LEGEND:

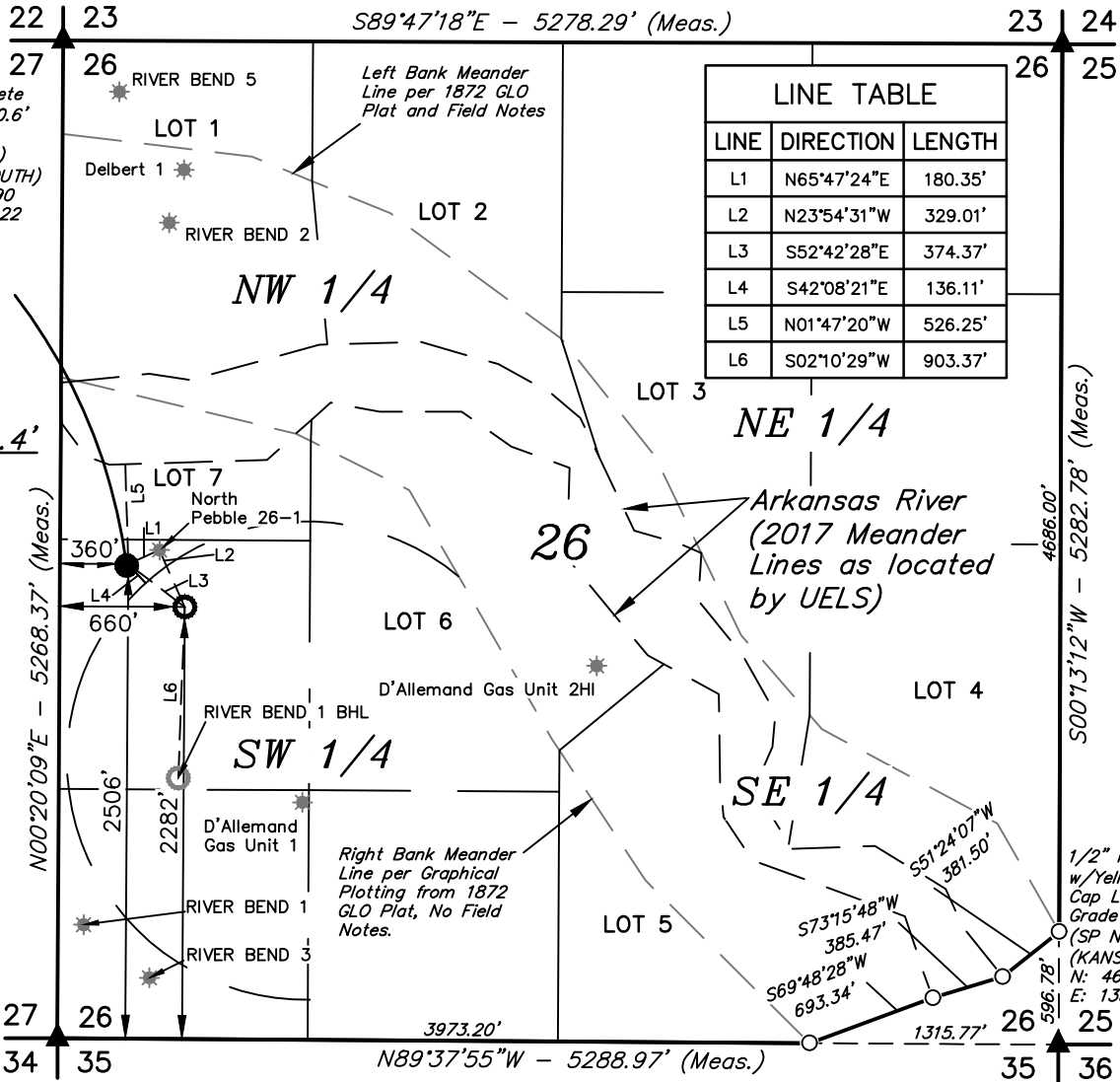
- = PROPOSED WELLHEAD.
- = TARGET BOTTOM HOLE.
- ▲ = SECTION CORNERS LOCATED
- = DIMENSION CORNER ONLY
- * = EXISTING WELLS

NOTE:
Distances referenced on plat to section lines are perpendicular.

4"x4" Concrete Monument, 0.6' Below Grade (SP NAD 27) (KANSAS SOUTH)
N: 473972.90
E: 1333852.22

RIVER BEND 10 WSW
Elev. Ungraded Ground = 2804.4'

5/8" Rebar,
0.5' Below Grade
(SP NAD 27)
(KANSAS SOUTH)
N: 473817.58
E: 1339127.07



CERTIFICATE

THIS IS TO CERTIFY THAT THE ABOVE PLAT WAS PREPARED FROM FIELD NOTES OF ACTUAL SURVEYS MADE BY ME OR UNDER MY SUPERVISION, AND THAT THE SAME ARE TRUE AND CORRECT TO THE BEST OF MY KNOWLEDGE AND BELIEF.

REGISTERED LAND SURVEYOR
REGISTRATION NO. 9347
STATE OF KANSAS

NAD 83 (SURFACE LOCATION)	NAD 83 (TARGET BOTTOM HOLE)
LATITUDE = 37°56'17.32" (37.938145)	LATITUDE = 37°56'15.08" (37.937521)
LONGITUDE = 100°48'34.48" (100.809577)	LONGITUDE = 100°48'30.76" (100.808545)
NAD 27 (SURFACE LOCATION)	NAD 27 (TARGET BOTTOM HOLE)
LATITUDE = 37°56'17.24" (37.938122)	LATITUDE = 37°56'14.99" (37.937499)
LONGITUDE = 100°48'32.90" (100.809140)	LONGITUDE = 100°48'29.19" (100.808108)
STATE PLANE NAD 83 (KANSAS SOUTH)	STATE PLANE NAD 83 (KANSAS SOUTH)
N: 1783556.51 E: 646349.24	N: 1783322.14 E: 646641.07
STATE PLANE NAD 27 (KANSAS SOUTH)	STATE PLANE NAD 27 (KANSAS SOUTH)
N: 471201.39 E: 1334125.18	N: 470967.03 E: 1334417.01

BASIS OF BEARINGS
BASIS OF BEARINGS IS A G.P.S. OBSERVATION
BASIS OF ELEVATION

BASED ON NGS CONTROL STATION WITH A PUBLISHED ELEVATION OF 2848.98' (NAVD88) AND A PUBLISHED POSITION OF LAT: N37°58'08.98901" LONG: W100°54'04.80320" (NAVD83(2011)).



MERIT ENERGY COMPANY

RIVER BEND 10 WSW
2506' FSL 360' FWL
NW 1/4 SW 1/4, SECTION 26, T24S, R32W, 6th P.M.
FINNEY COUNTY, KANSAS

SURVEYED BY	J.P.	05-29-19	SCALE
DRAWN BY	S.Y.	05-31-19	1" = 1000'

WELL LOCATION PLAT



UELS, LLC
Corporate Office * 85 South 200 East
Vernal, UT 84078 * (435) 789-1017

T24S, R32W, 6th P.M.

LEGEND:

- = PROPOSED WELLHEAD.
- = TARGET BOTTOM HOLE.
- ▲ = SECTION CORNERS LOCATED
- = DIMENSION CORNER ONLY
- * = EXISTING WELLS

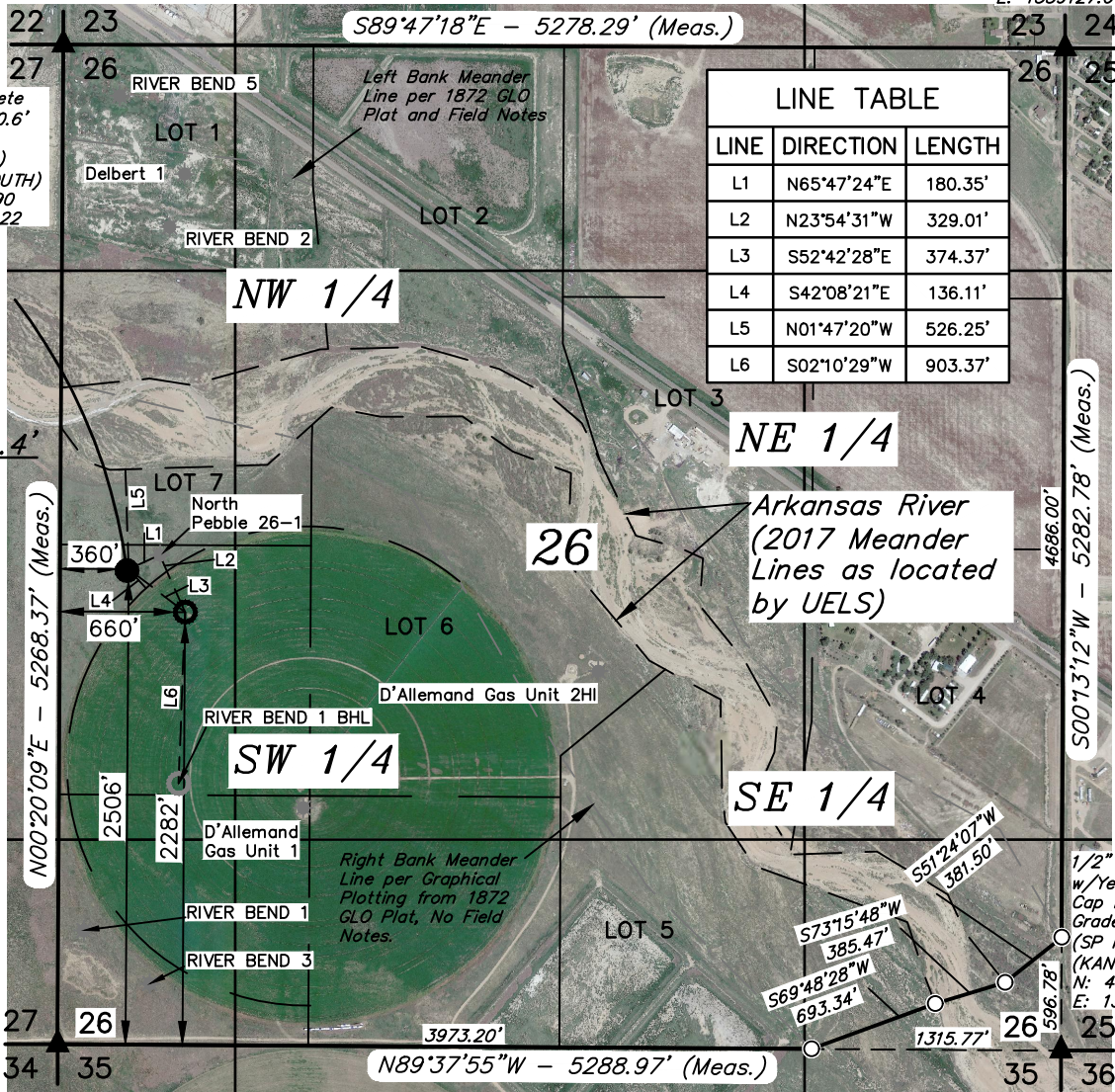
NOTE:
Distances referenced on plat to section lines are perpendicular.

4"x4" Concrete Monument, 0.6' Below Grade (SP NAD 27) (KANSAS SOUTH)
N: 473972.90
E: 1333852.22

RIVER BEND 10 WSW

Elev. Ungraded Ground = 2804.4'

5/8" Rebar, 0.5' Below Grade (SP NAD 27) (KANSAS SOUTH)
N: 473817.58
E: 1339127.07



LINE TABLE		
LINE	DIRECTION	LENGTH
L1	N65°47'24"E	180.35'
L2	N23°54'31"W	329.01'
L3	S52°42'28"E	374.37'
L4	S42°08'21"E	136.11'
L5	N01°47'20"W	526.25'
L6	S02°10'29"W	903.37'

CERTIFICATE

THIS IS TO CERTIFY THAT THE ABOVE PLAT WAS PREPARED FROM FIELD NOTES OF ACTUAL SURVEYS MADE BY ME OR UNDER MY SUPERVISION, AND THAT THE SAME ARE TRUE AND CORRECT TO THE BEST OF MY KNOWLEDGE AND BELIEF.

REGISTERED LAND SURVEYOR
REGISTRATION NO. 19341
STATE OF KANSAS

NAD 83 (SURFACE LOCATION)	NAD 83 (TARGET BOTTOM HOLE)
LATITUDE = 37°56'17.32" (37.938145)	LATITUDE = 37°56'15.08" (37.937521)
LONGITUDE = 100°48'34.48" (100.809577)	LONGITUDE = 100°48'30.76" (100.808545)
NAD 27 (SURFACE LOCATION)	NAD 27 (TARGET BOTTOM HOLE)
LATITUDE = 37°56'17.24" (37.938122)	LATITUDE = 37°56'14.99" (37.937499)
LONGITUDE = 100°48'32.90" (100.809140)	LONGITUDE = 100°48'29.19" (100.808108)
STATE PLANE NAD 83 (KANSAS SOUTH)	STATE PLANE NAD 83 (KANSAS SOUTH)
N: 1783556.51 E: 646349.24	N: 1783322.14 E: 646641.07
STATE PLANE NAD 27 (KANSAS SOUTH)	STATE PLANE NAD 27 (KANSAS SOUTH)
N: 471201.39 E: 1334125.18	N: 470967.03 E: 1334417.01

BASIS OF BEARINGS
BASIS OF BEARINGS IS A G.P.S. OBSERVATION

BASIS OF ELEVATION
BASED ON NGS CONTROL STATION WITH A PUBLISHED ELEVATION OF 2848.98" (NAVD88) AND A PUBLISHED POSITION OF LAT: N37°58'08.98901" LONG: W100°54'04.80320" (NAVD83(2011)).



MERIT ENERGY COMPANY

RIVER BEND 10 WSW
2506' FSL 360' FWL
NW 1/4 SW 1/4, SECTION 26, T24S, R32W, 6th P.M.
FINNEY COUNTY, KANSAS

SURVEYED BY	J.P.	05-29-19	SCALE
DRAWN BY	S.Y.	05-31-19	1" = 1000'

WELL LOCATION PLAT



UELS, LLC
Corporate Office * 85 South 200 East
Vernal, UT 84078 * (435) 789-1017

BEGINNING AT THE INTERSECTION OF US-83 BUSINESS AND KS-156 IN GARDEN CITY, KANSAS PROCEED IN A SOUTHWESTERLY, THEN SOUTHEASTERLY DIRECTION ALONG US-83 BUSINESS APPROXIMATELY 3.2 MILES TO THE JUNCTION OF THIS ROAD AND US-83; TURN LEFT AND PROCEED IN A NORTHEASTERLY DIRECTION APPROXIMATELY 1.2 MILES TO THE JUNCTION OF THIS ROAD AND BURNSIDE DRIVE TO THE EAST; TURN RIGHT AND PROCEED IN AN EASTERLY DIRECTION APPROXIMATELY 0.9 MILES TO THE JUNCTION OF THIS ROAD AND AN EXISTING ROAD TO THE SOUTH; TURN RIGHT AND PROCEED IN A SOUTHERLY, THEN SOUTHEASTERLY, THEN EASTERLY DIRECTION APPROXIMATELY 1.7 MILES. FROM THIS POINT, THE PROPOSED WELL LOCATION IS APPROXIMATELY 2545' NORTHERLY.

TOTAL DISTANCE FROM GARDEN CITY, KANSAS TO THE PROPOSED WELL LOCATION IS APPROXIMATELY 7.5 MILES.

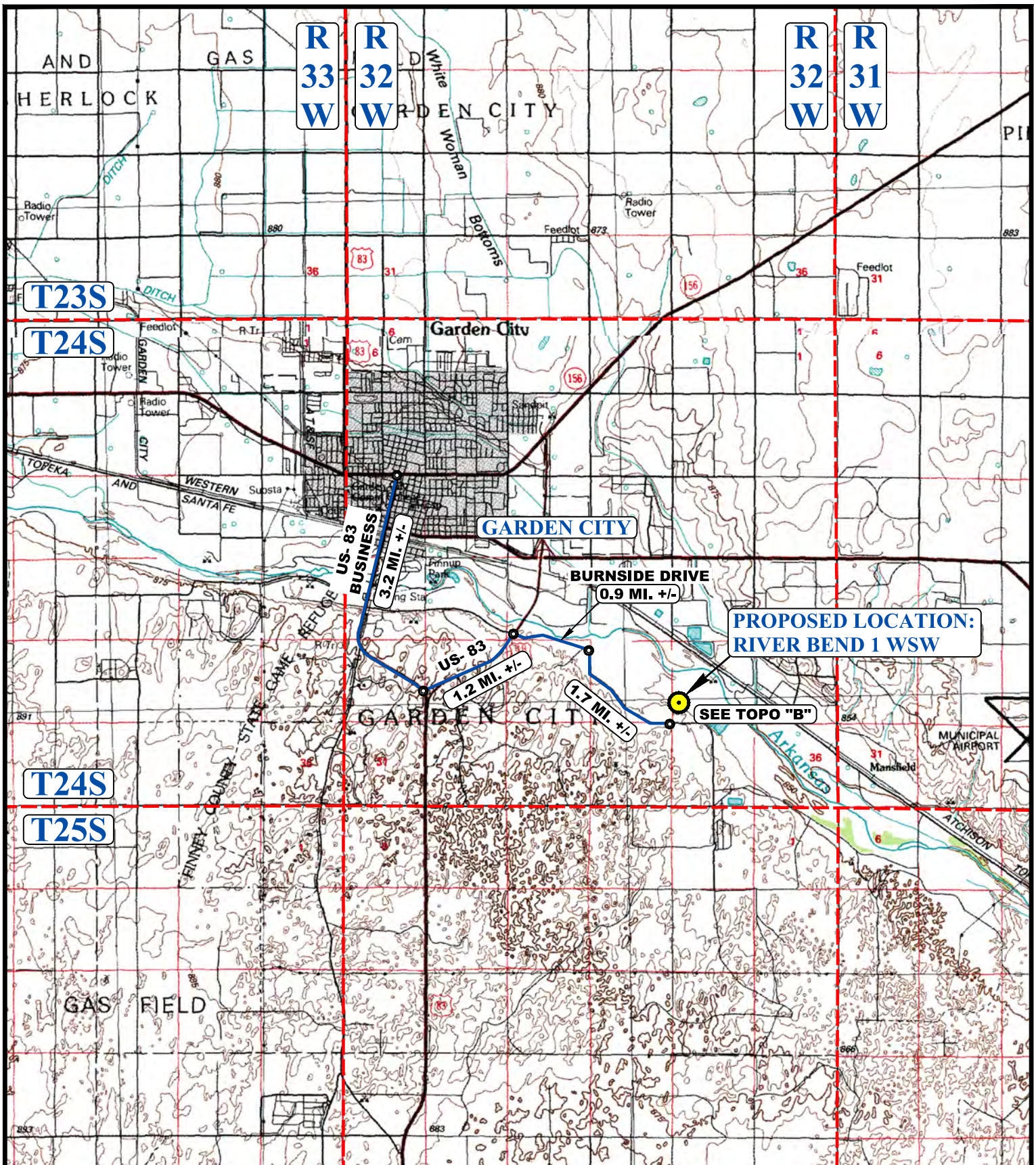
MERIT ENERGY COMPANY

**RIVER BEND 10 WSW
2506' FSL 360' FWL
NW 1/4 SW 1/4, SECTION 26, T24S, R32W, 6th P.M.
FINNEY COUNTY, KANSAS**

SURVEYED BY	J.P.	05-29-19	
DRAWN BY	W.G.	05-31-19	
ROAD DESCRIPTION			



UELS, LLC
Corporate Office * 85 South 200 East
Vernal, UT 84078 * (435) 789-1017



LEGEND:

 **PROPOSED LOCATION**



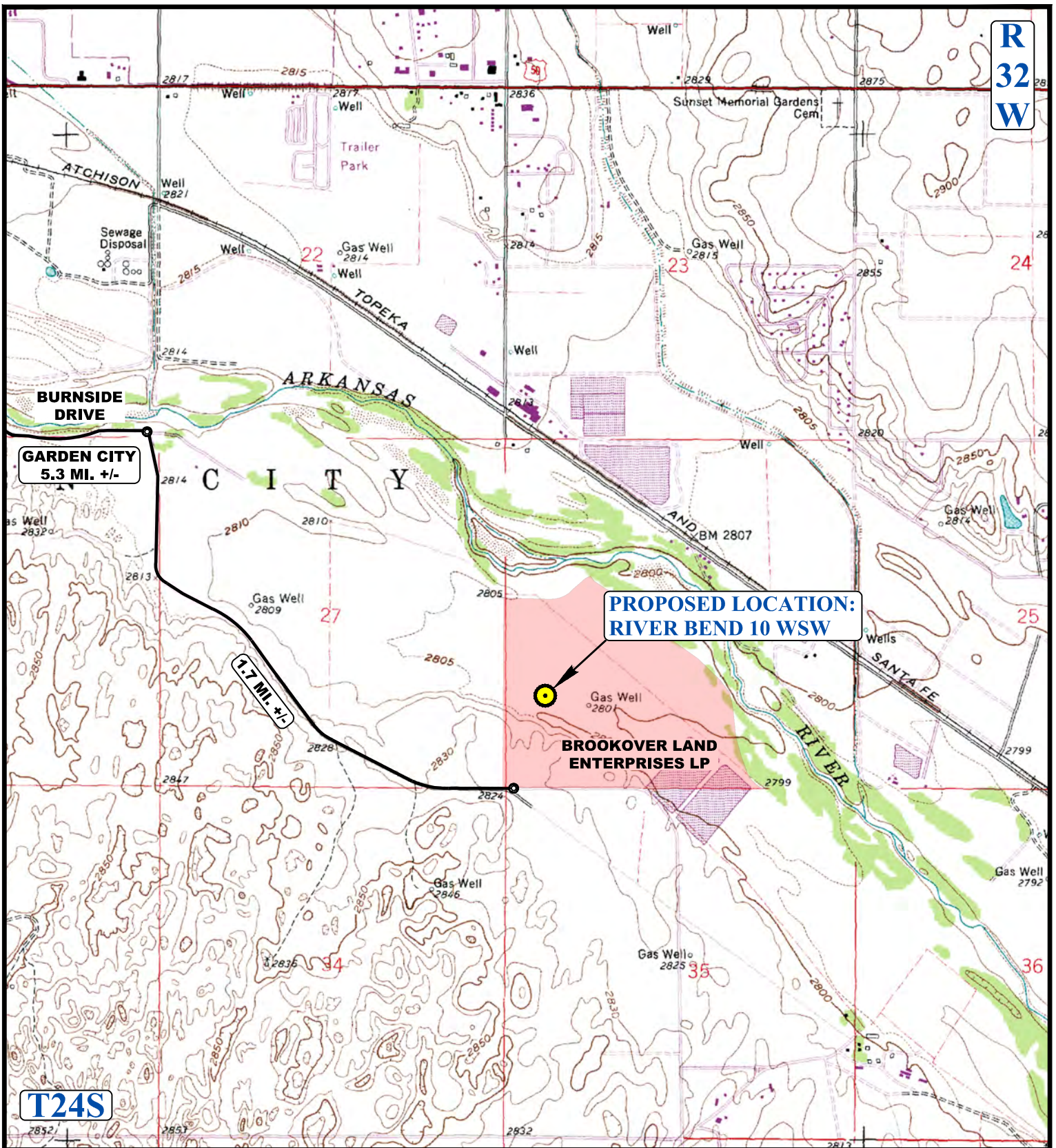
MERIT ENERGY COMPANY

RIVER BEND 10 WSW
2506' FSL 360' FWL
NW 1/4 SW 1/4, SECTION 26, T24S, R32W, 6th P.M.
FINNEY COUNTY, KANSAS

SURVEYED BY	J.P.	05-29-19	SCALE
DRAWN BY	W.G.	05-31-19	1 : 100,000
ACCESS ROAD MAP			TOPO A



UELS, LLC
 Corporate Office * 85 South 200 East
 Vernal, UT 84078 * (435) 789-1017



NOTE: PARCEL DATA SHOWN HAS BEEN OBTAINED FROM VARIOUS SOURCES AND SHOULD BE USED FOR MAPPING, GRAPHIC AND PLANNING PURPOSES ONLY. NO WARRANTY IS MADE BY UINTAH ENGINEERING AND LAND SURVEYING (UELS) FOR ACCURACY OF THE PARCEL DATA.

LEGEND:

— EXISTING ROAD



MERIT ENERGY COMPANY

RIVER BEND 10 WSW
2506' FSL 360' FWL
NW 1/4 SW 1/4, SECTION 26, T24S, R32W, 6th P.M.
FINNEY COUNTY, KANSAS

SURVEYED BY	J.P.	05-29-19	SCALE
DRAWN BY	W.G.	05-31-19	1 : 24,000
ACCESS ROAD MAP			TOPO B



UELS, LLC
 Corporate Office * 85 South 200 East
 Vernal, UT 84078 * (435) 789-1017