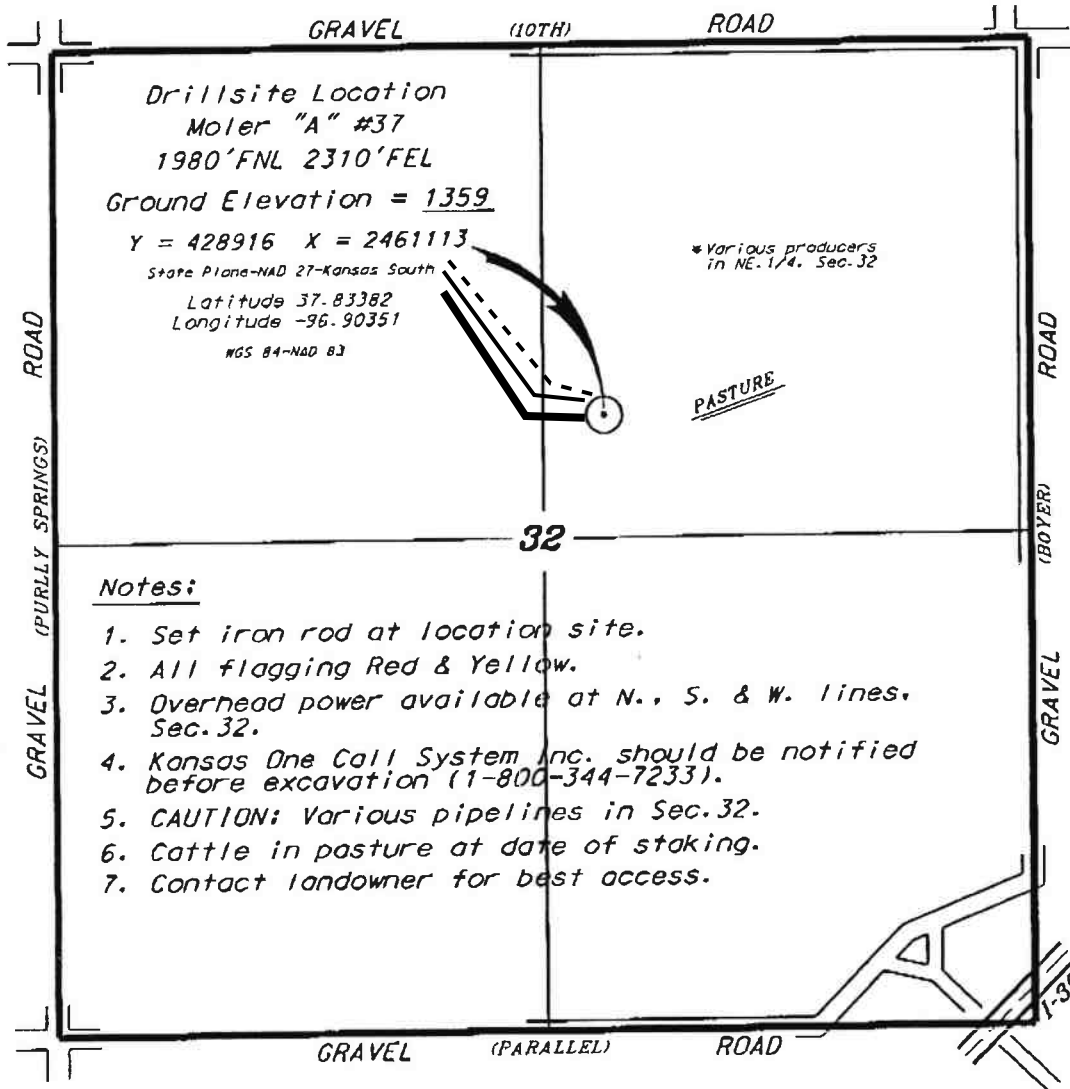


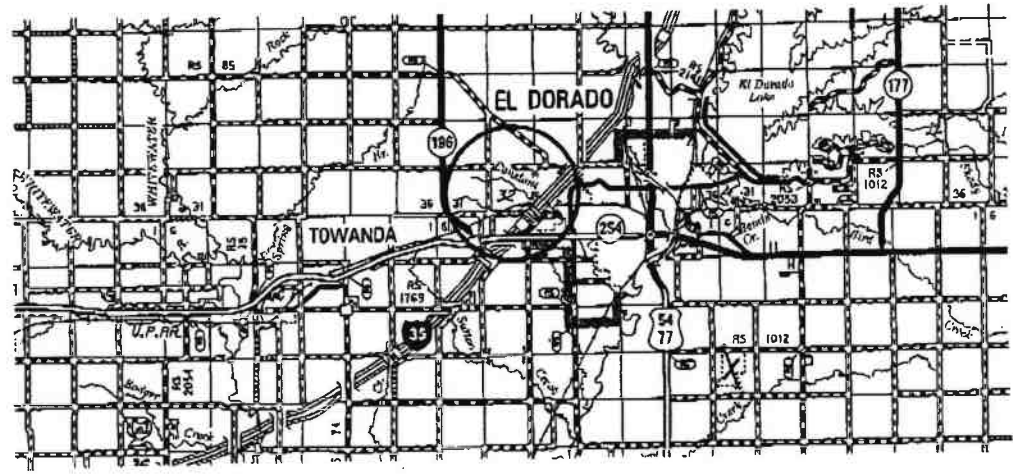
VESS OIL CORPORATION  
 MOLER LEASE  
 NE. 1/4, SECTION 32, T25S, R5E  
 BUTLER COUNTY, KANSAS



Notes:

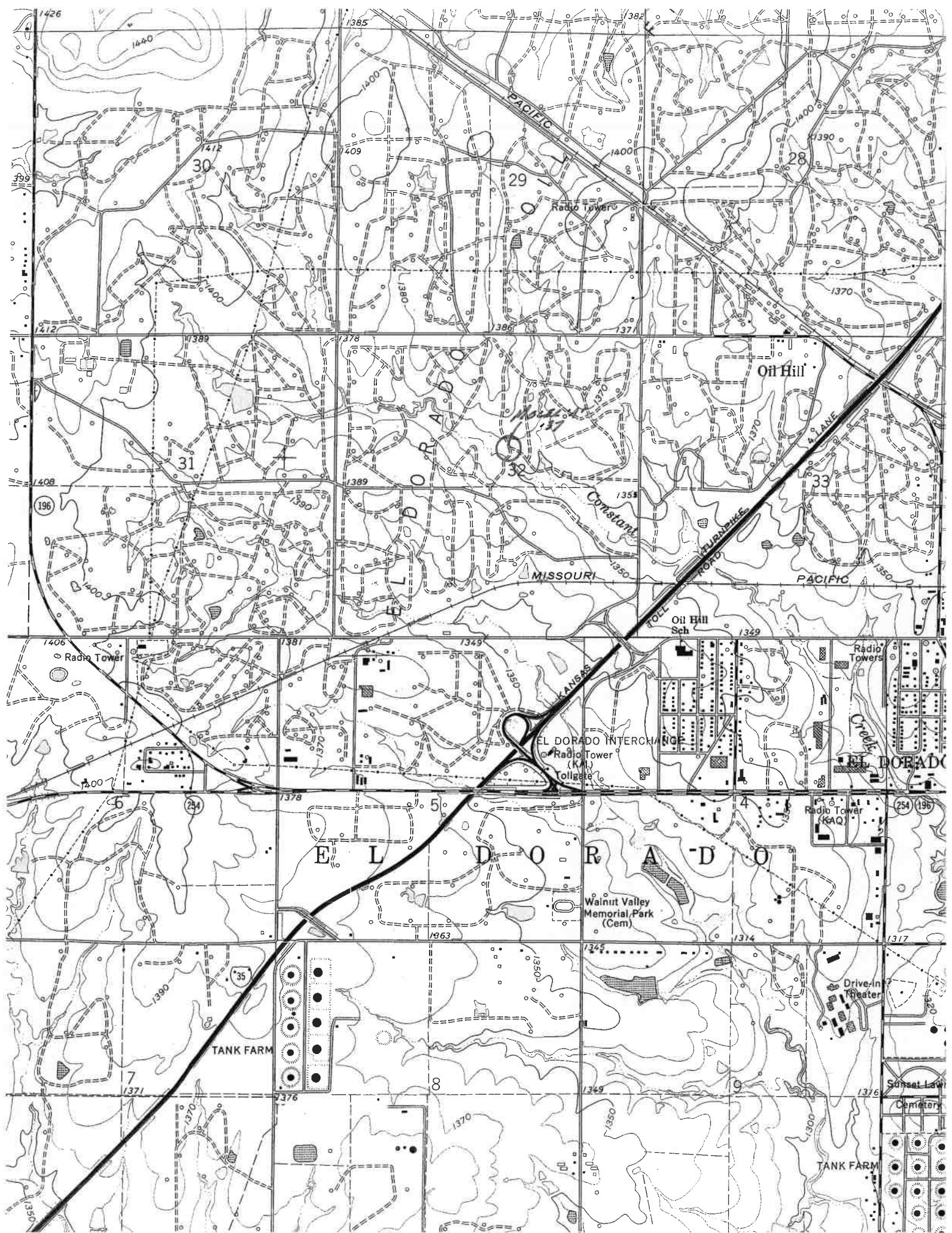
1. Set iron rod at location site.
2. All flagging Red & Yellow.
3. Overhead power available at N., S. & W. lines. Sec. 32.
4. Kansas One Call System Inc. should be notified before excavation (1-800-344-7233).
5. CAUTION: Various pipelines in Sec. 32.
6. Cattle in pasture at date of staking.
7. Contact landowner for best access.

\*Ingress and egress to location as shown on this plat is per usage only and may not be legally opened for public use. Contact landowner, transient and county road department for access.



\* Controlling data is based upon the best maps and photographic available to us and upon a regular section of land containing 360 acres.  
 \* Approximate section lines were determined using the normal standard of care of oilfield surveyors practicing in the state of Kansas. The section corners, which establish the precise section lines, were not necessarily located, and the exact location of the drillsite location in the section is not guaranteed. Therefore, the operator securing this service and accepting this plat, and all other parties relying thereon agree to hold Central Kansas Oilfield Services, Inc., its officers and employees harmless from all losses, costs and expenses and said entities released from any liability from incidental or consequential damages.  
 \* Elevations derived from National Geodetic Vertical Datum.

Date May 15, 2019



1426

30

31

6

7

1385

29

32

5

8

1382

28

33

4

3

1400

1400

1370

1349

1376

1412

1406

1406

1390

1350

1409

1399

1381

1378

1376

1400

1386

1378

1350

1349

1390

1359

1349

1314

1300

1412

1400

1400

1390

1350

1381

1399

1378

1370

1370

1400

1386

1378

1350

1349

1390

1359

1349

1314

1300

1412

1400

1400

1390

1350

1381

1399

1378

1370

1370

1400

1386

1378

1350

1349

1390

1359

1349

1314

1300

1412

1406

1406

1390

1350

1381

1399

1378

1370

1370

1400

1386

1378

1350

1349

1390

1359

1349

1314

1300

1412

1406

1406

1390

1350

1381

1399

1378

1370

1370

1400

1386

1378

1350

1349

1390

1359

1349

1314

1300

1412

1406

1406

1390

1350

1381

1399

1378

1370

1370

1400

1386

1378

1350

1349

1390

1359

1349

1314

1300

1412

1406

1406

1390

1350

1381

1399

1378

1370

1370

1400

1386

1378

1350

1349

1390

1359

1349

1314

1300

1406

1406

1406

1390

1399

1378

1378

1370

1386

1378

1350

1349

1359

1349

1314

1300

1406

1406

1406

1390

1399

1378

1378

1370

1386

1378

1350

1349

1359

1349

1314

1300

1406

1406

1406

1390

1399

1378

1378

1370

1386

1378

1350

1349

1359

1349

1314

1300

1406

1406

1406

1390

1399

1378

1378

1370

1386

1378

1350

1349

1359

1349

1314

1300

1406

1406

1406

1390

1399

1378

1378

1370

1386

1378

1350

1349

1359

1349

1314

1300

1406

1406

1406

1390

1399

1378

1378

1370

1386

1378

1350

1349

1359

1349

1314

1300

1406

1406

1406

1390

1399

1378

1378

1370

1386

1378

1350

1349

1359

1349

1314

1300

1406

1406

1406

1390

1399

1378

1378

1370

1386

1378

1350

1349

1359

1349

1314

1300

1406

1406

1406

1390

1399

1378

1378

1370

1386

1378

1350

1349

1359

1349

1314

1300

1406

1406

1406

1390

1399

1378

1378

1370

1386

1378

1350

1349

1359

1349

1314

1300

1406