



Fall & Associates

Stake and Elevation Service

P.O. Box 222

Pretty Prairie, KS. 67570

785-243-7506

Date 6-11-19

Invoice Number 0606191

MURFIN DRILLING

2-21

Smith 'A'

Operator

Number

Farm Name

Cheyenne-KS

21

2s

37w

2310'FL 330'FEL

County-State

S

T

R

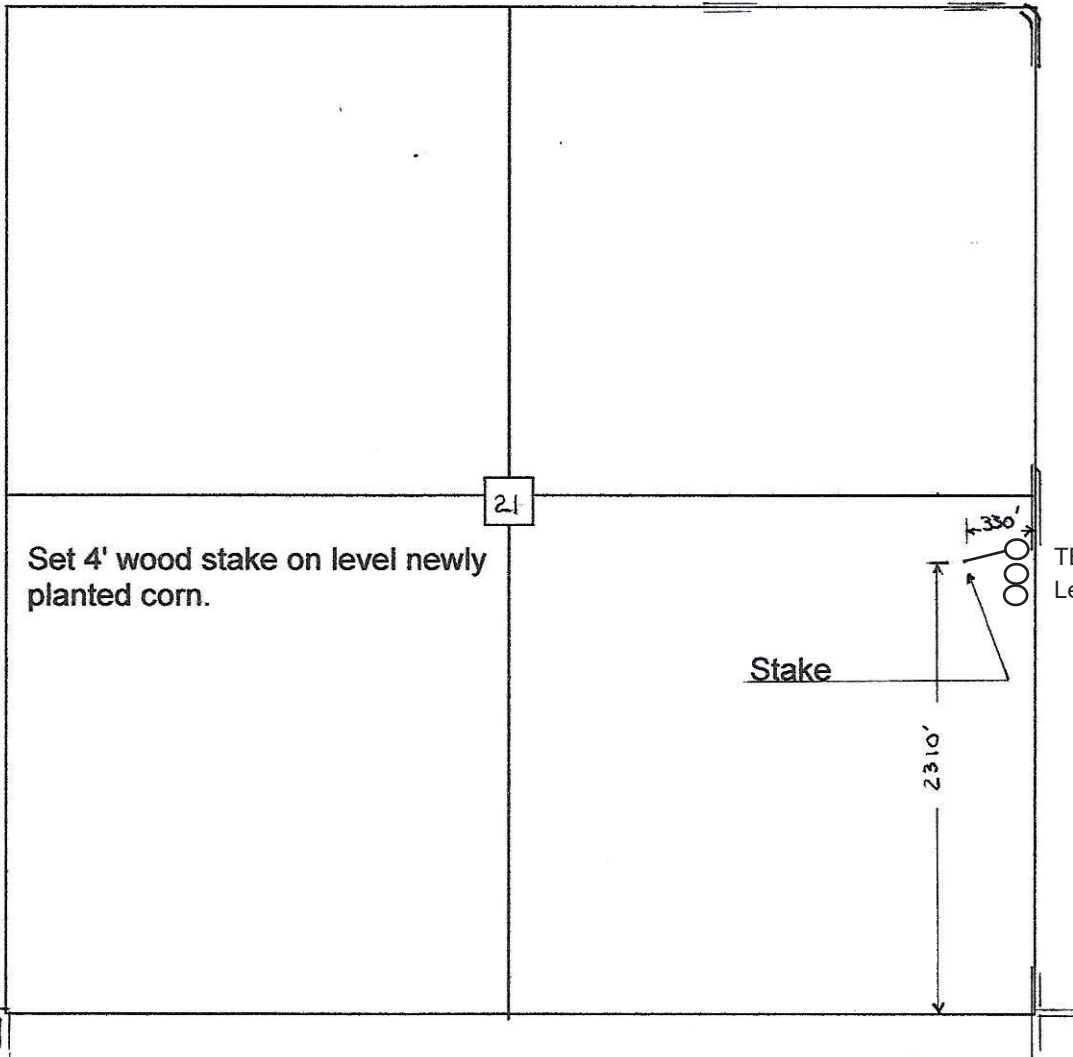
Location

Murfin Drilling
250 N Water
Suite 300
Wichita, Ks. 67202

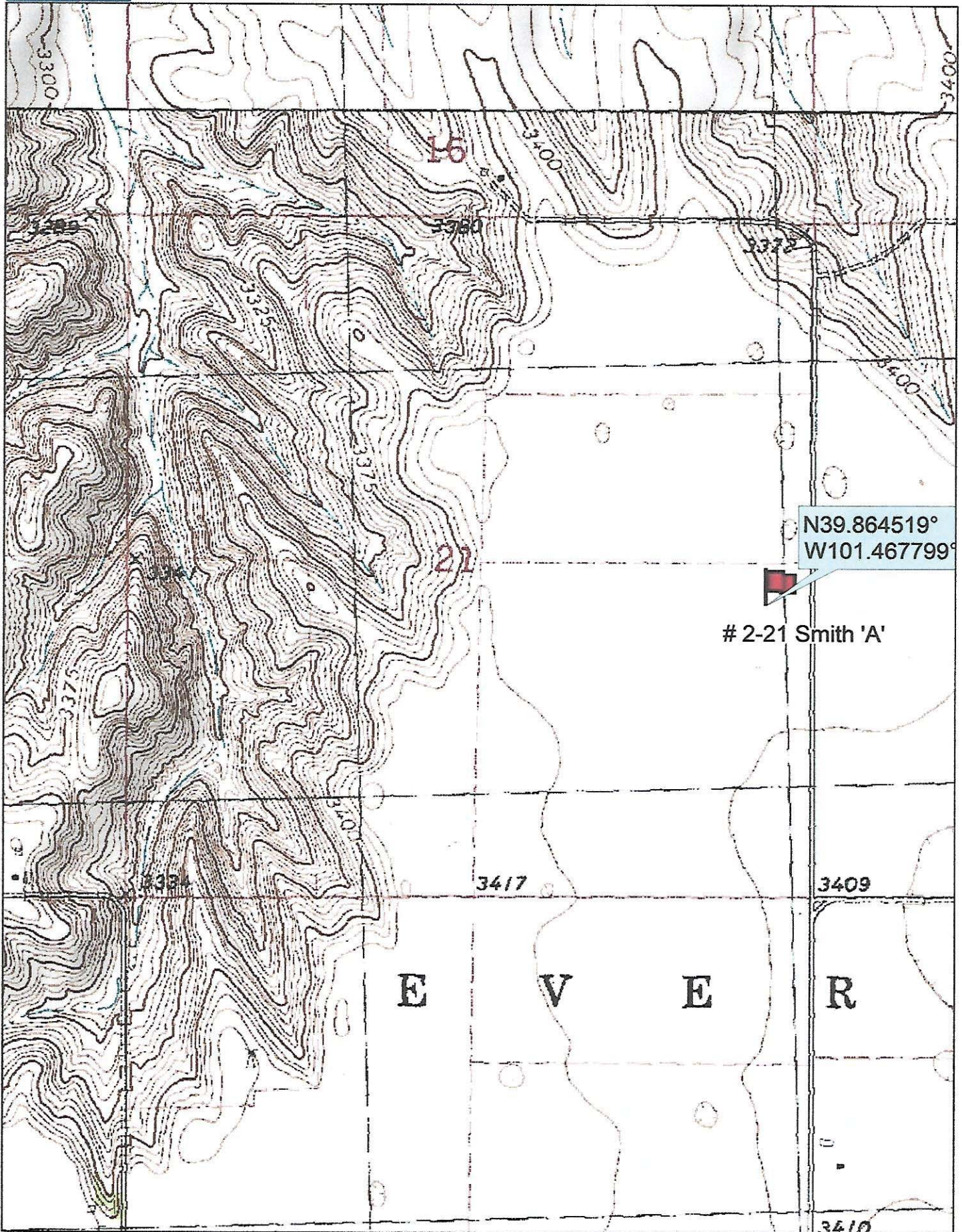
Elevation 3411 Gr.

Ordered By: Shauna

Scale 1"=1000'



Set 4' wood stake on level newly planted corn.



Data use subject to license.

© DeLorme. Topo North America™ 9.

www.delorme.com

