

GREAT GUNS

Sonic Cement

Bond Log

FILING NO.

COMPANY SHEPLER & THOMAS, INC.

WELL SIEMANS #1-29

FIELD Wildcat

COUNTY SEWARD STATE KANSAS

Location C-SW-NW

Sec. 29 Twp 32S Rge. 31W

Other Services:

Permanent Datum GROUND LEVEL

Elev. 2783

Elev. K.B. 2794

Log Measured From KELLY BUSHING 11 Ft. Above Perm. Datum

D.F.

Drilling Measured From KELLY BUSHING

G.L. 2783

Run No.	<u>ONE</u>
Date & Time Survey	<u>2-9-89</u> <u>3:00 P</u>
Date & Time Cementing	<u>1-31-89</u>
Type Cementing Operation	<u>PRODUCTION</u>
Depth Driller	<u>4000'</u>
Depth Logger	<u>5610'</u>
Logged Interval	<u>5604' to 4000'</u>
Casing Driller	<u>4 1/2 @ 5650'</u>
Float Collar—D.V. Tool	<u>@</u>
Squeeze Depth	
Amount & Type Cement	
Amount & Type Admix	
Type Fluid in Hole	<u>H₂O</u>
Fluid Level	<u>FULL</u>
Salinity PPM Cl	
Weight lb/gal—Vis.	
Approx. Logged Cem. Top	<u>4140'</u>
Calculated Cement Top	
Max. Hole Temperature	<u>138° F.</u>
Tool No.	<u>GRTBOTSIE-14</u>
Spacing Recorded	<u>4 FT.</u>
Equipment—Location	<u>86 Liberal, Ks.</u>
Recorded by	<u>G. ELDER</u>
Witnessed by	<u>FRANK BURKE</u>

CASING RECORD

Centralized Interval

Scratched Interval

To 1630'
From 5650'

From 00
To 00

Wt 28#
Csg. Size 4 1/2

BORE HOLE RECORD

To 1630'
From 4000'

From 00
To 1630'

Bit Size 13 1/4
7 1/8

GREAT GUNS

Sonic Cement
Bond Log

FILING NO. _____

COMPANY Shepler & Thomas, Inc.

WELL SIEMANS #1-29

FIELD Wildcat

COUNTY SEWARD STATE KANSAS

Location C-SW-NW Other Services: _____

Sec. 29 Twp 32S Rge. 31W

Permanent Datum GROUND LEVEL Elev. 2783 Elev. K.B. 2794

Log Measured From Kelly Bushing 11 Ft. Above Perm. Datum: D.F. _____

Log Measured From Kelly Bushing G.L. 2783

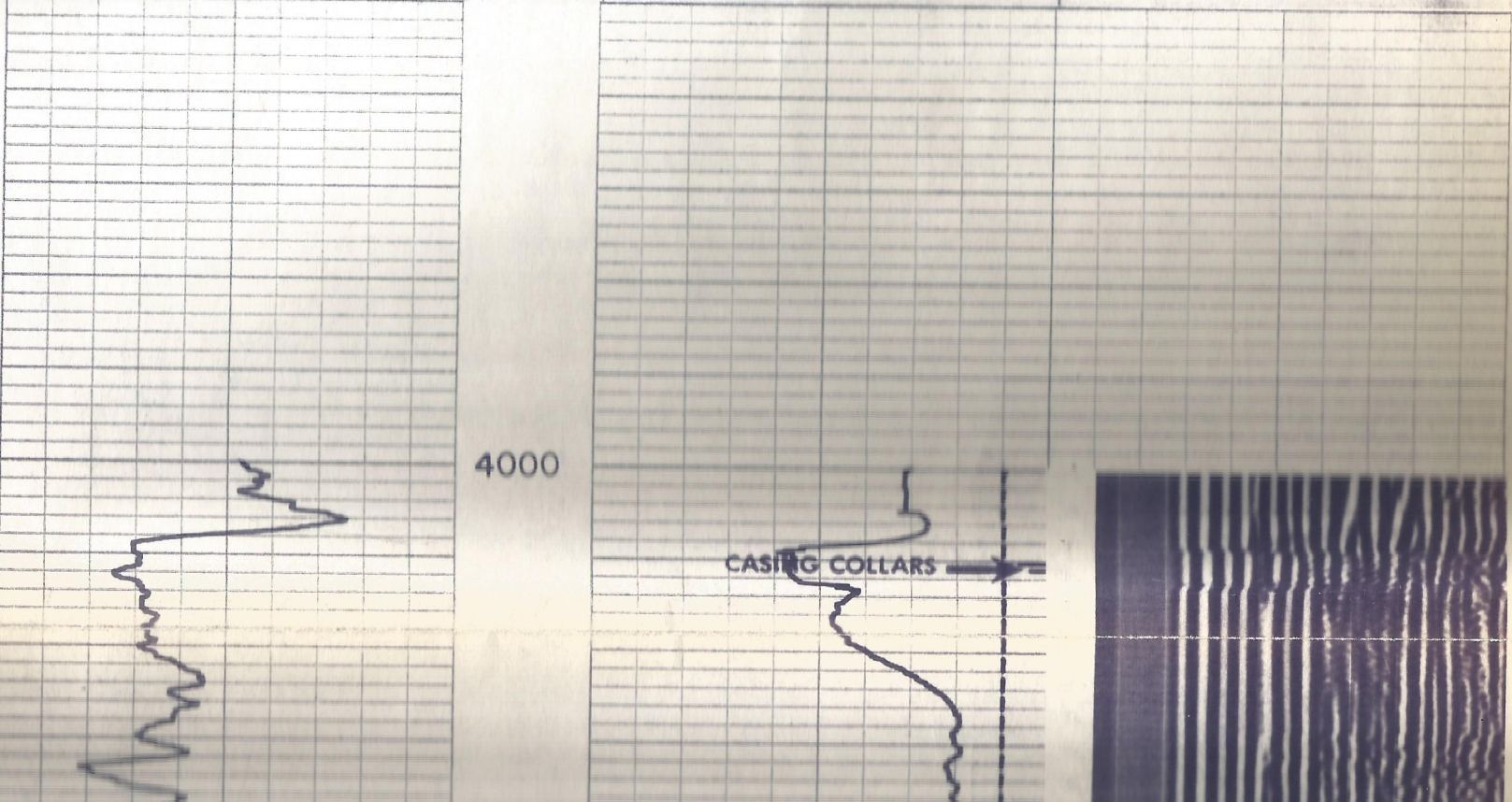
Run No.	<u>ONE</u>
Date & Time Survey	<u>2-9-89 3:00 p</u>
Date & Time Cementing	<u>1-31-89</u>
Type Cementing Operation	<u>PRODUCTION</u>
Depth Driller	<u>4000'</u>
Depth Logger	<u>5410'</u>
Logged Interval	<u>5404' to 4000'</u>
Casing Driller	<u>4 1/2 @ 5450'</u>
Joint Collar - DV Tool	
Grease Depth	
Amount & Type Cement	
Amount & Type Admix	
Type Fluid in Hole	<u>H2O</u>
Fluid Level	<u>FULL</u>
Salinity PPM Cl	
Weight lb/gal - Vis	
Approx. Logged Cem. Top	<u>4140'</u>
Calculated Cement Top	
Max. Hole Temperature	<u>138°F</u>
Well No.	<u>GRIBOITSIE-14</u>
Operator Recorded	<u>Liberal, Ka.</u>
Equipment - Location	
Recorded by	<u>E. EIDER</u>

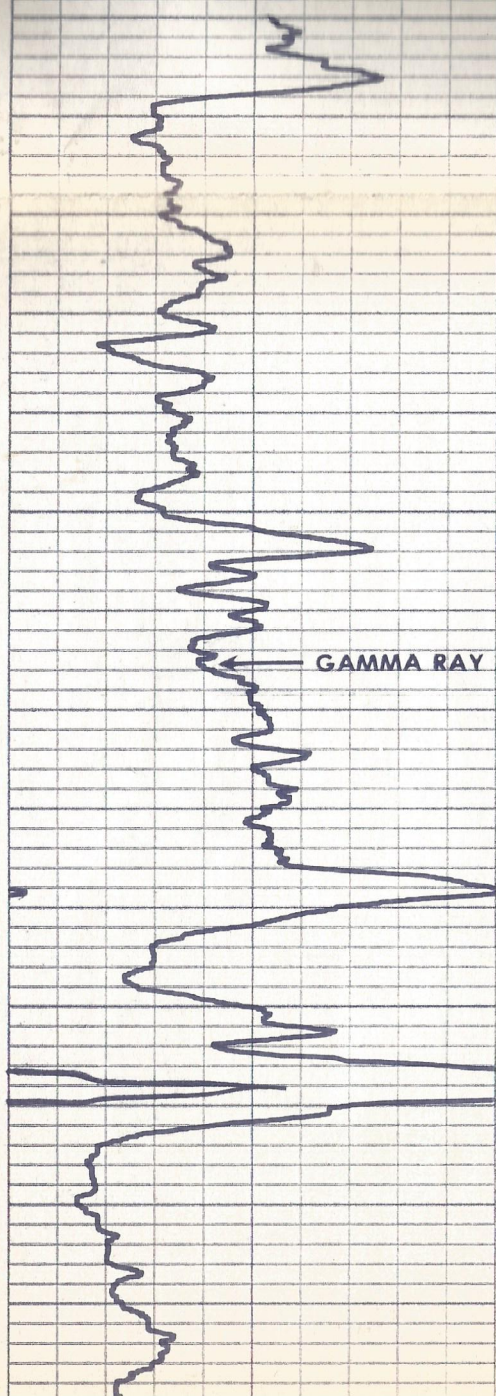
BORE HOLE RECORD		CASING RECORD		
Start	End	From	To	Interval
1630'	00	00	1630'	Centralized Interval
1630'	6000'	00	5450'	Scratched Interval
				Open Perforations

GAMMA RAY		VIL	
DEPTH	READING	DEPTH	READING
300		PIPE CURVE	100
150		FORMATION CURVE	250.0
			1000

BORE HOLE RECORD			CASING RECORD				
Bit Size	From	To	Csg. Size	Wt.	From	To	Centralized Interval
12 1/4	00	1630'	8 5/8	24"	00	1630'	
7 7/8	1630'	6000'	4 1/2	10.5"	00	5650'	Scratched Interval
							Open Perforations

GAMMA RAY		DEPTHS	CASING COLLARS		VIL
150	300		0	PIPE CURVE 100	
0	150	750	FORMATION CURVE 250 0	1000	





GAMMA RAY

4000

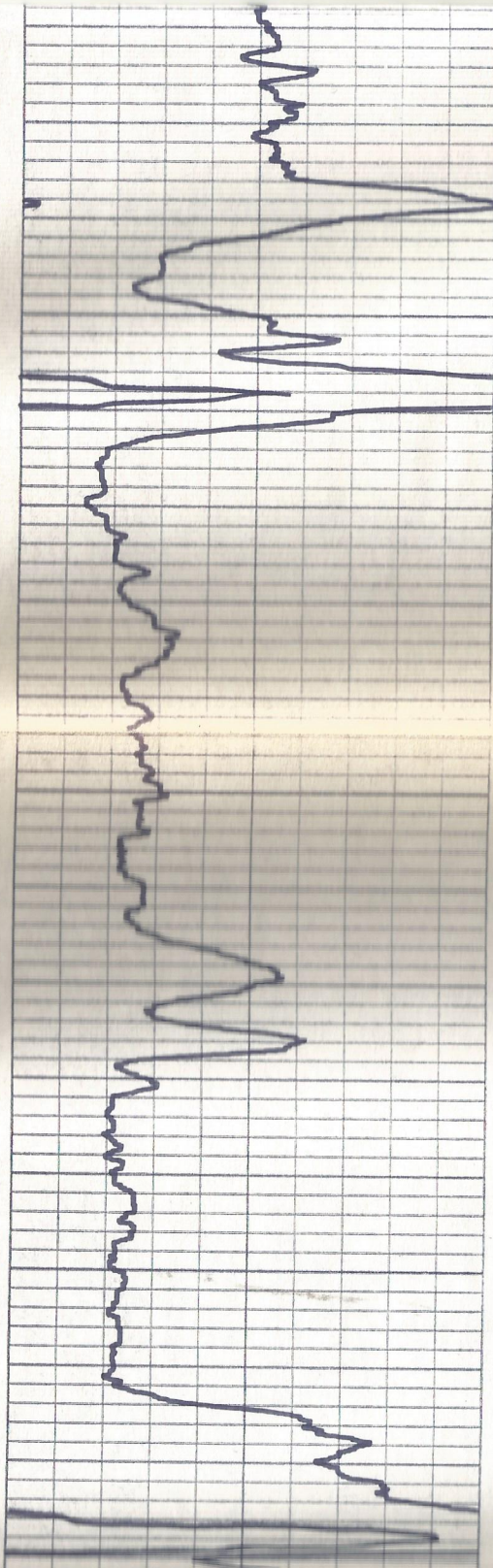
4100

CASING COLLARS

PIPE CURVE

FORMATION CURVE



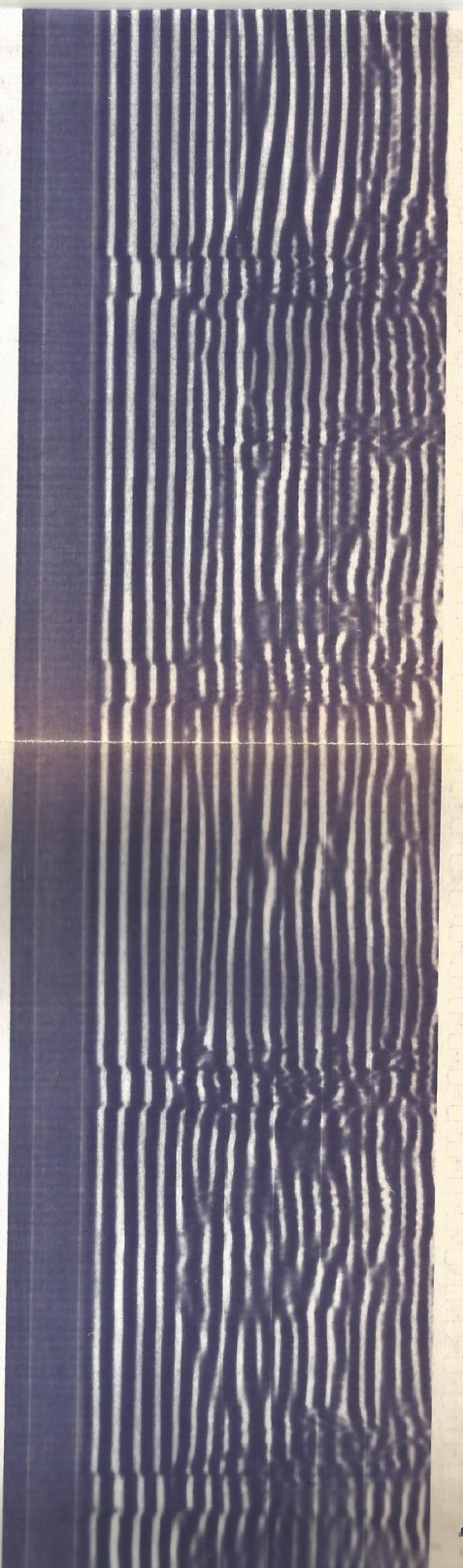
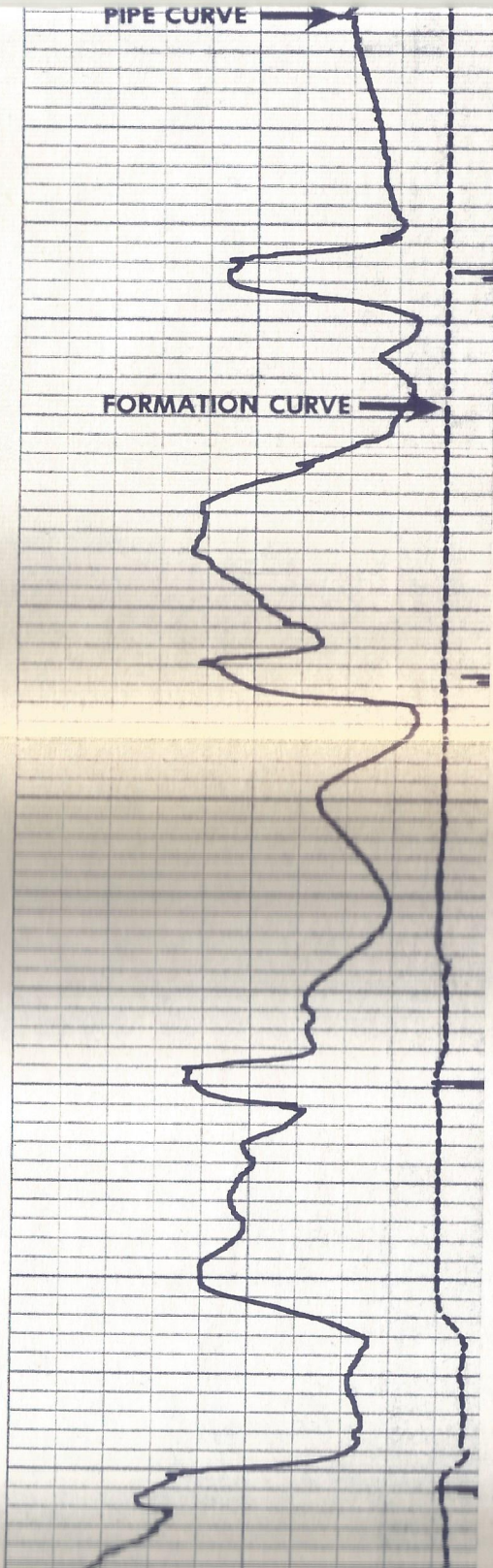


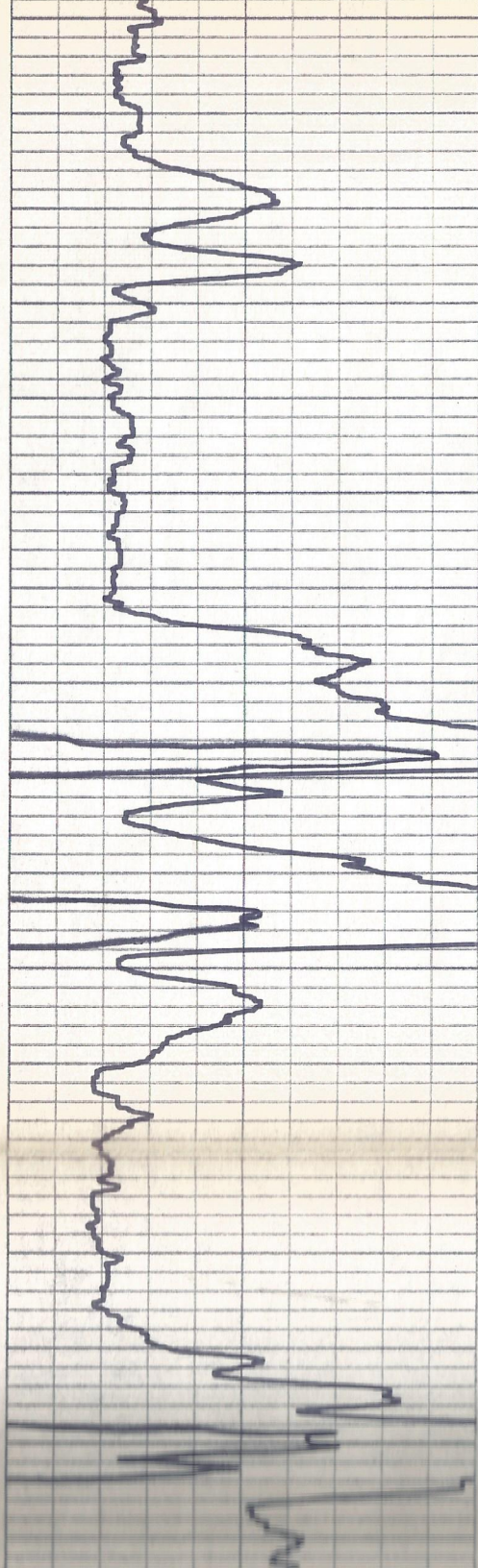
4100

4200

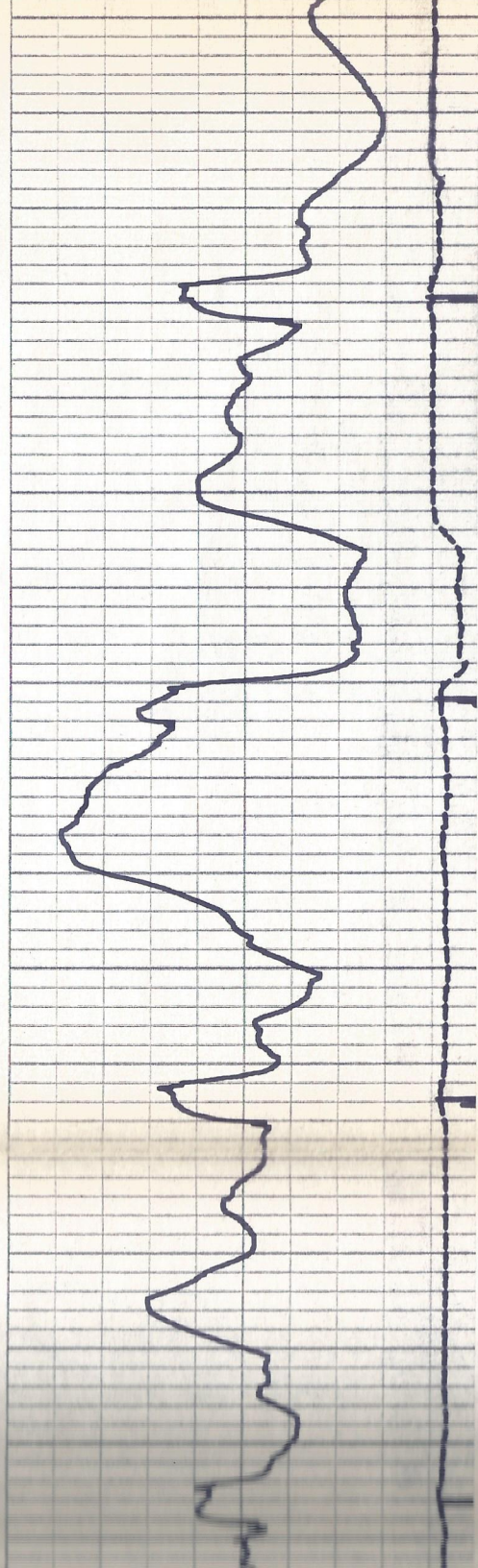
PIPE CURVE →

FORMATION CURVE →

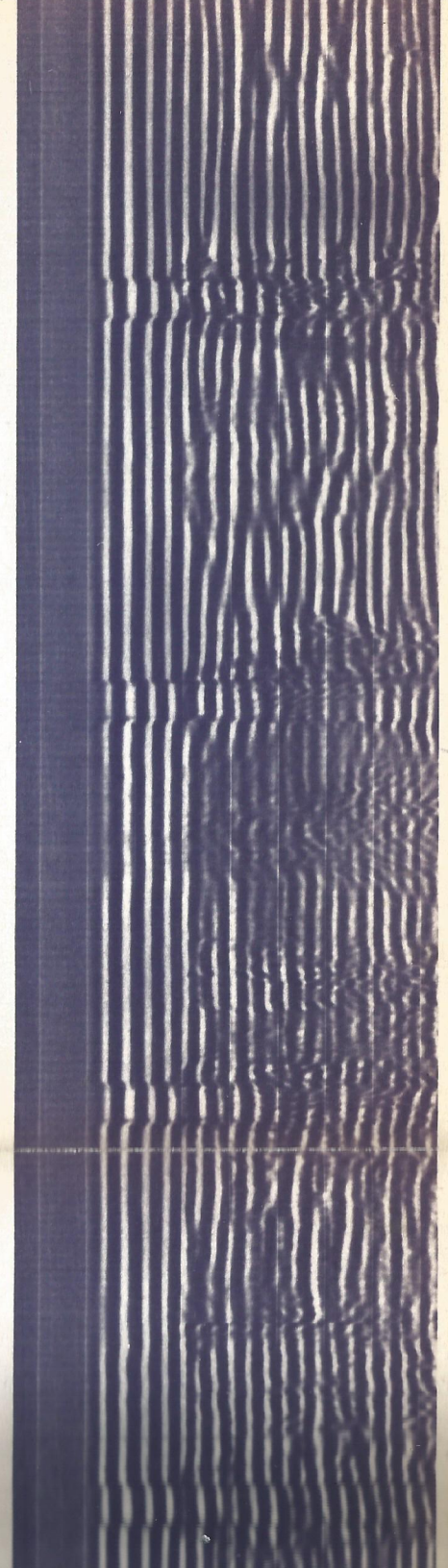


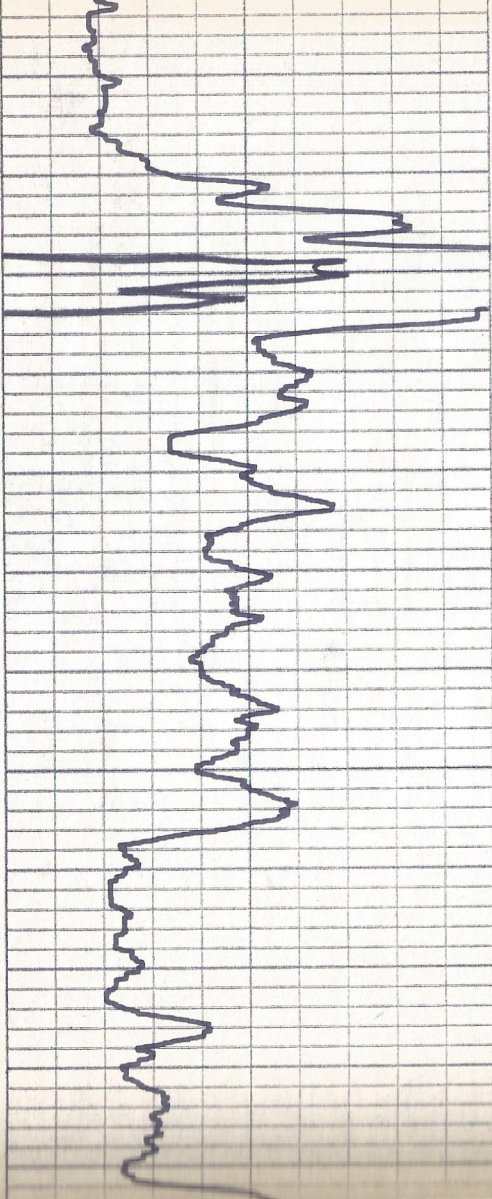


4200

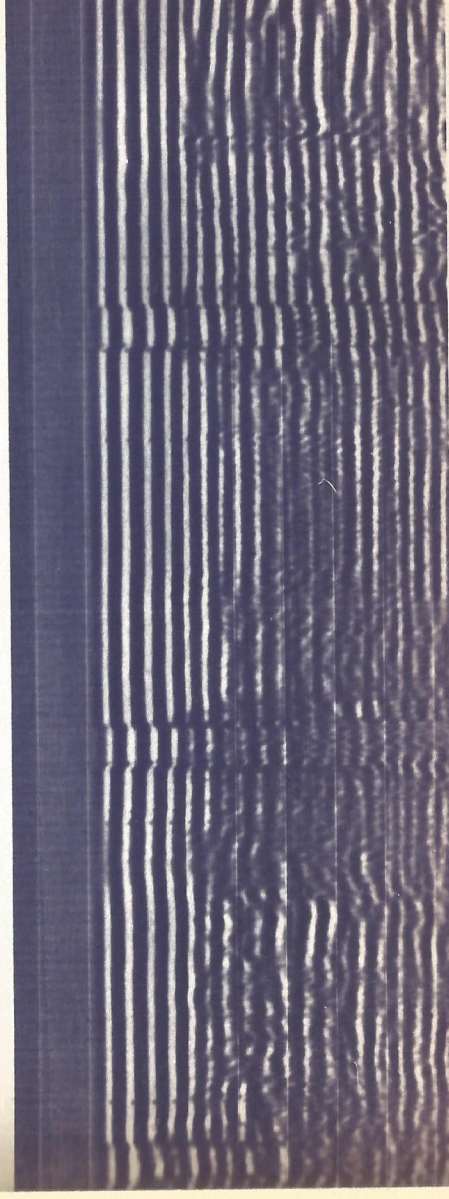


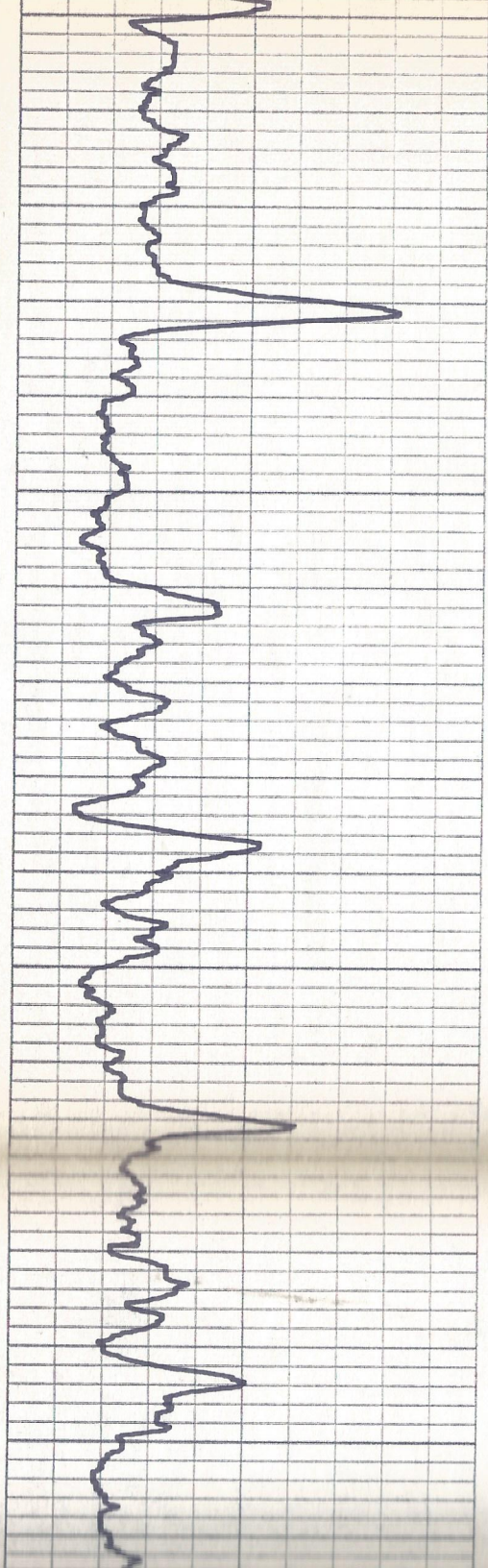
4300





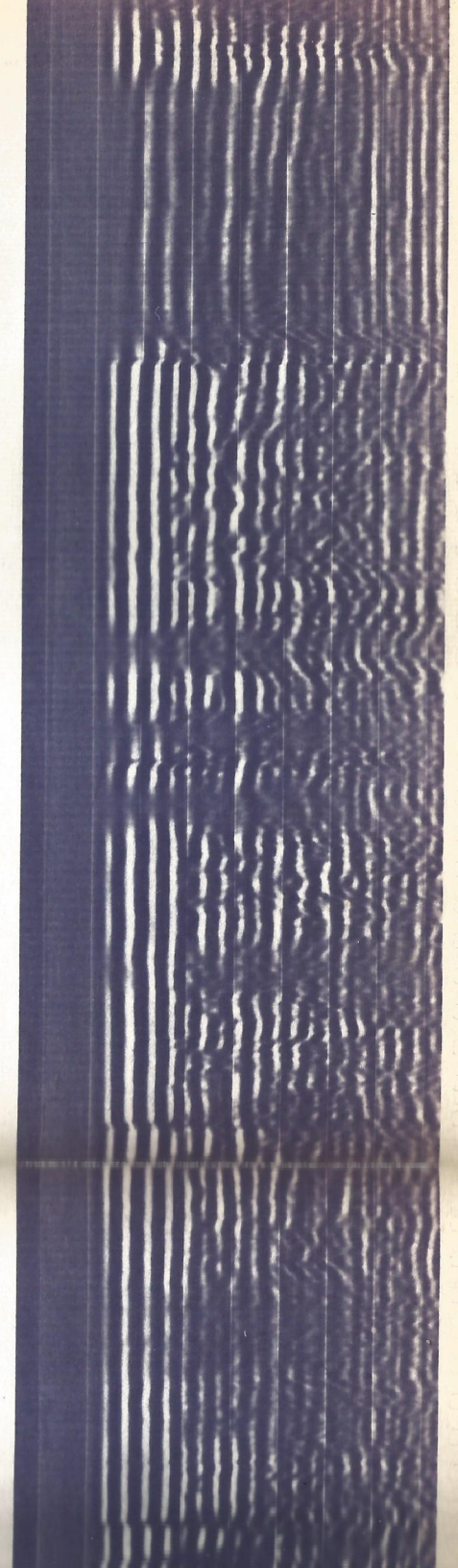
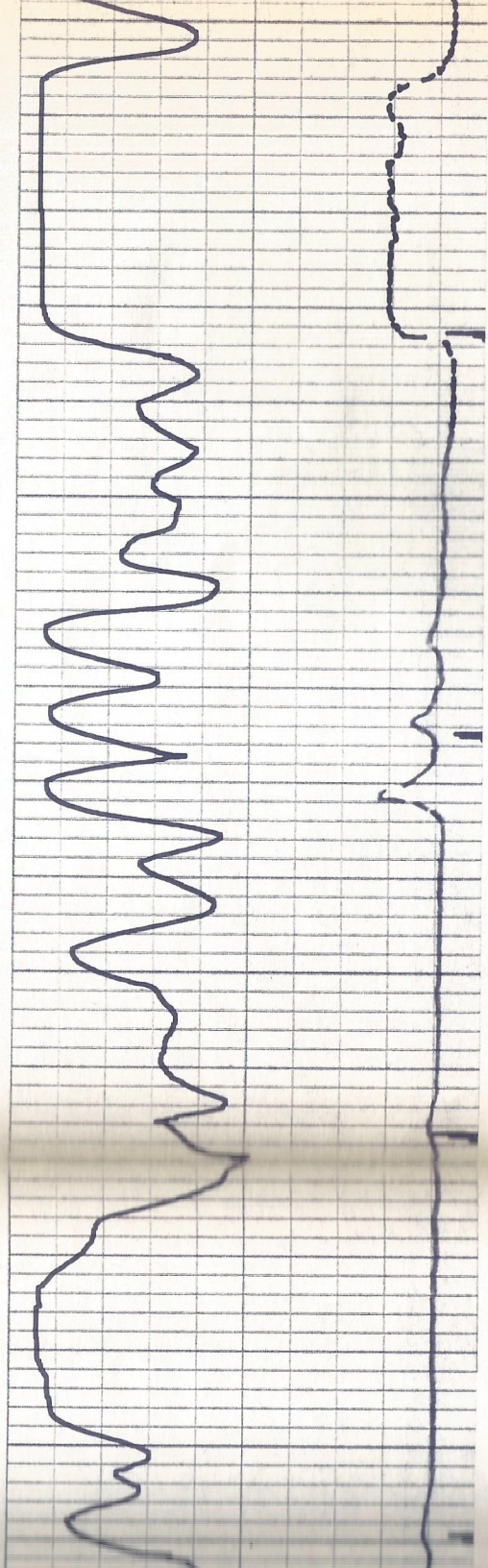
4300

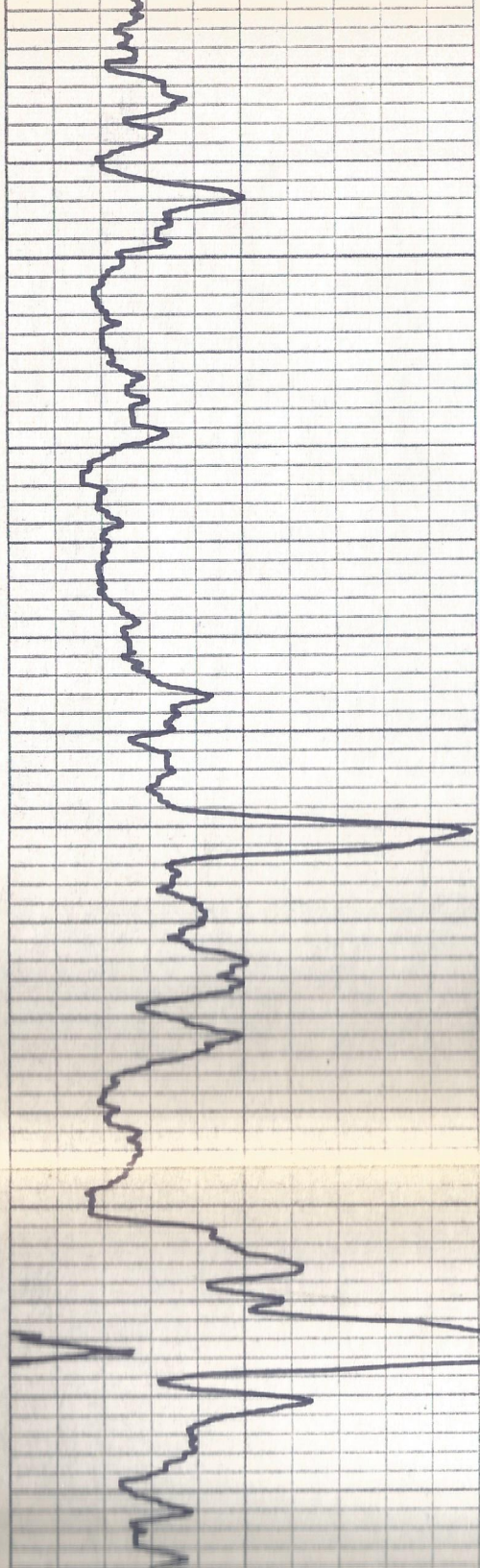




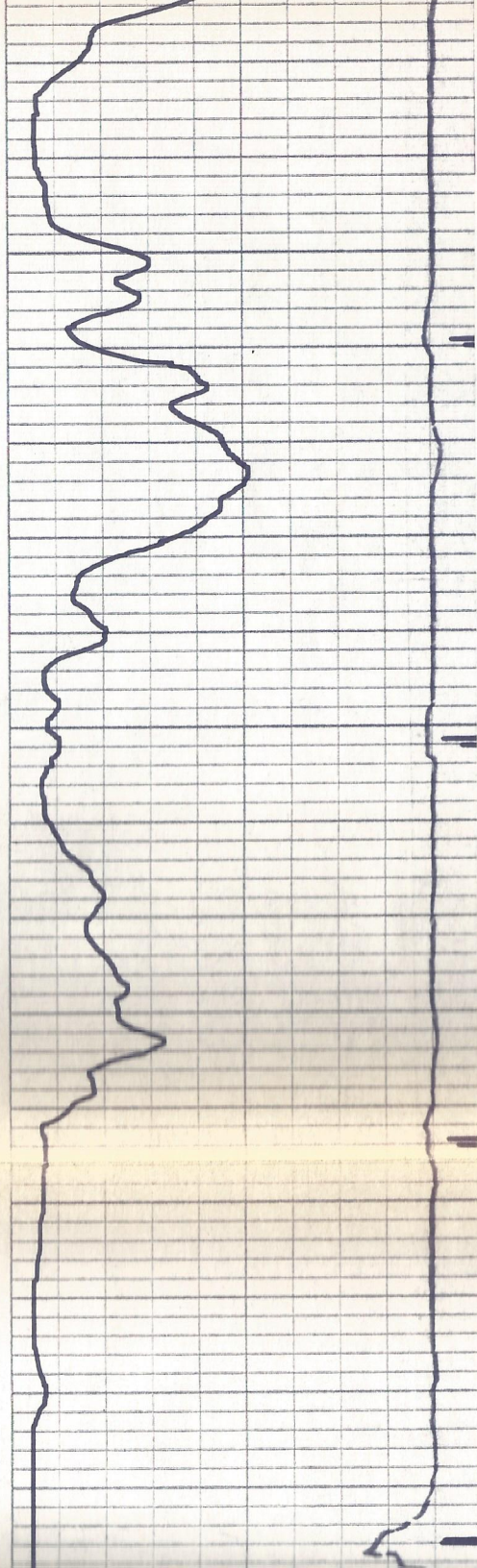
4400

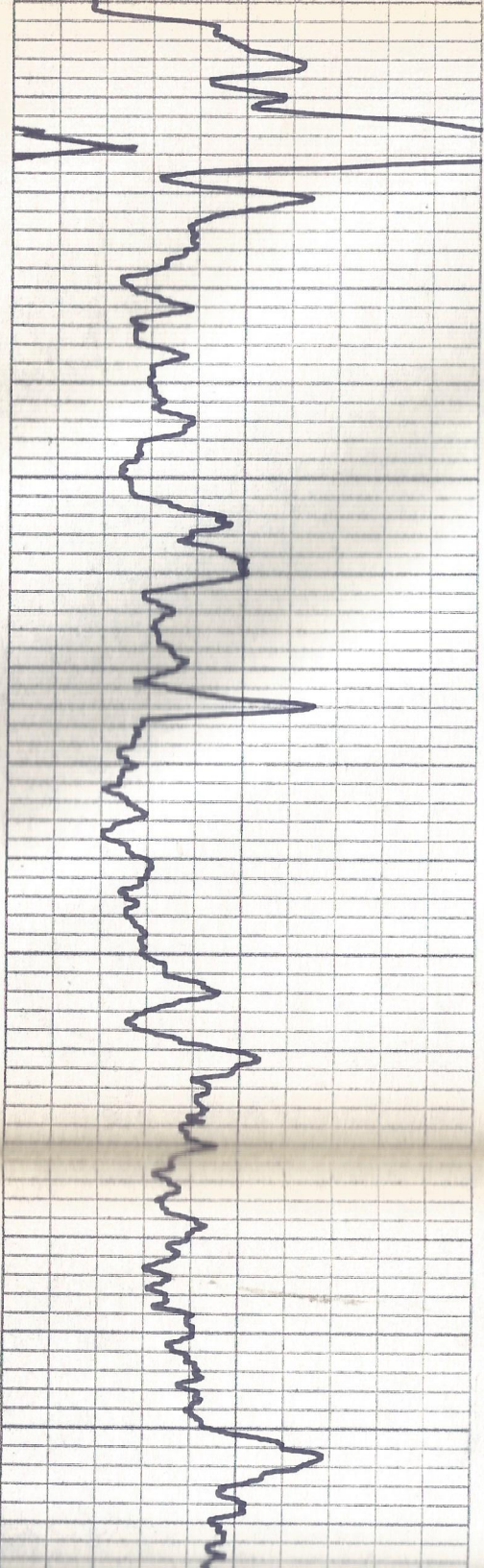
4500





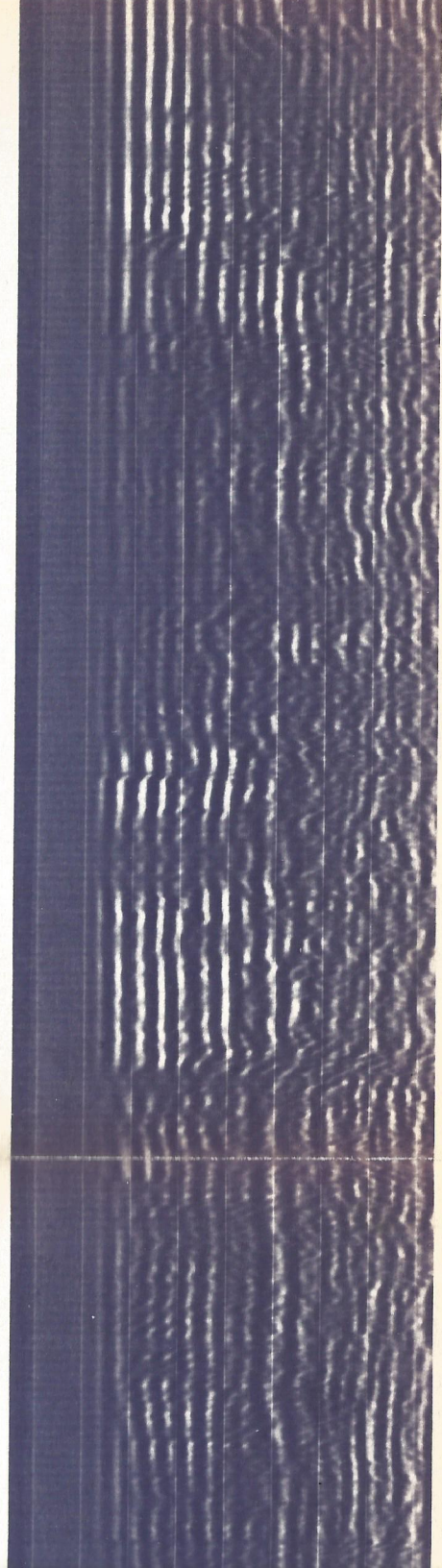
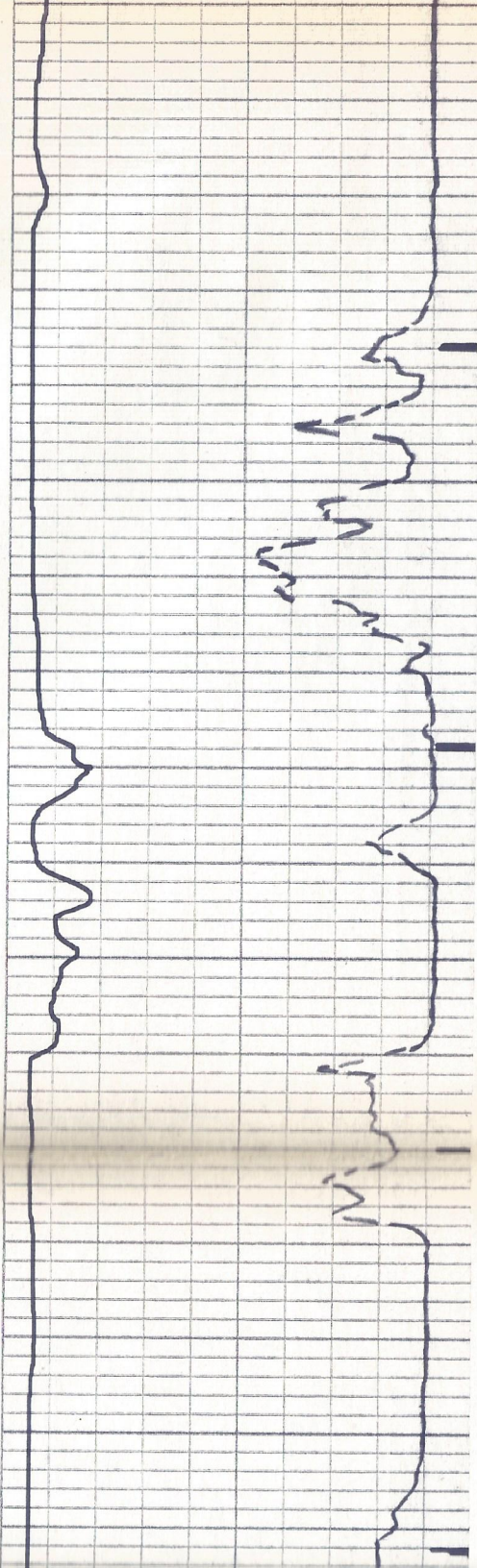
4600

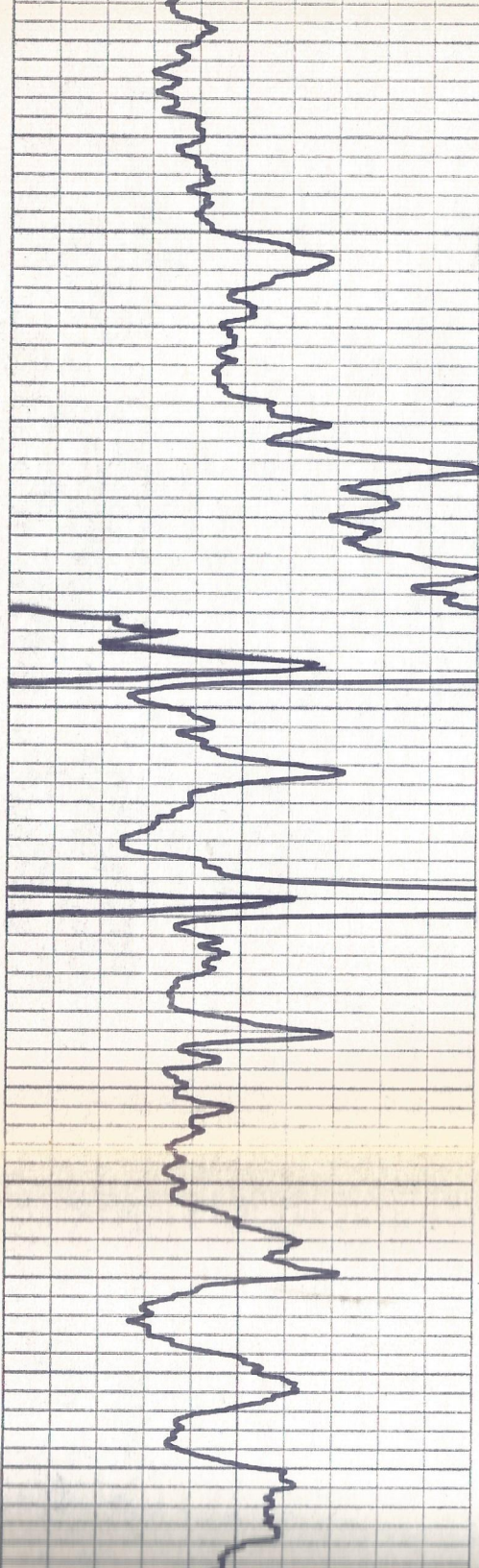




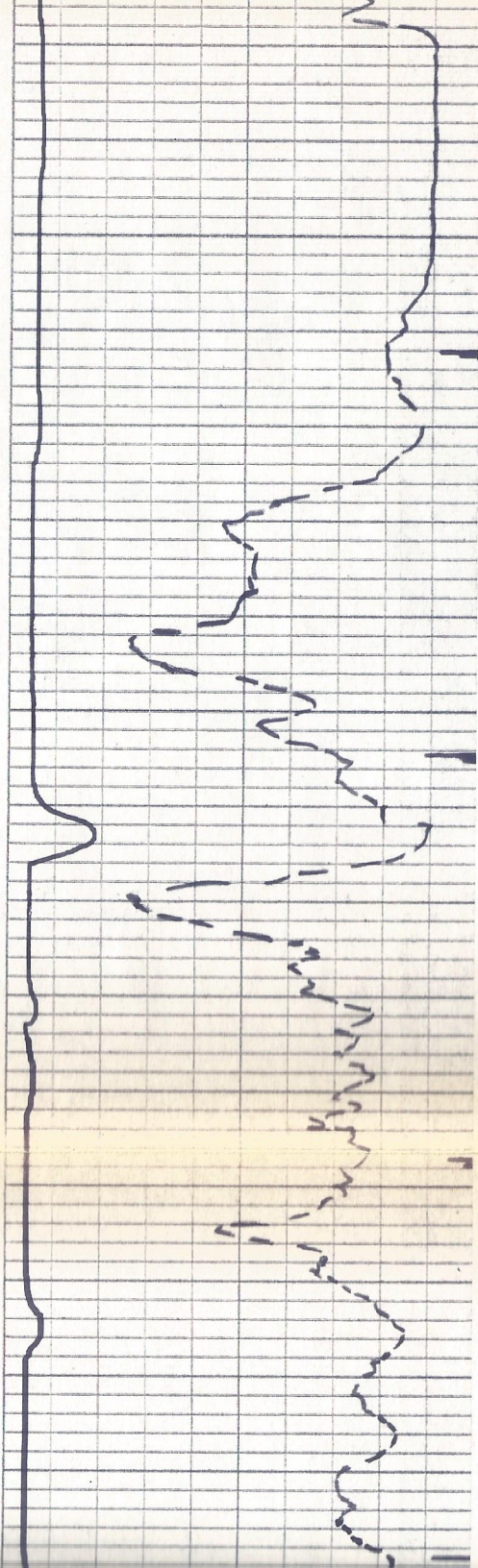
4700

4800

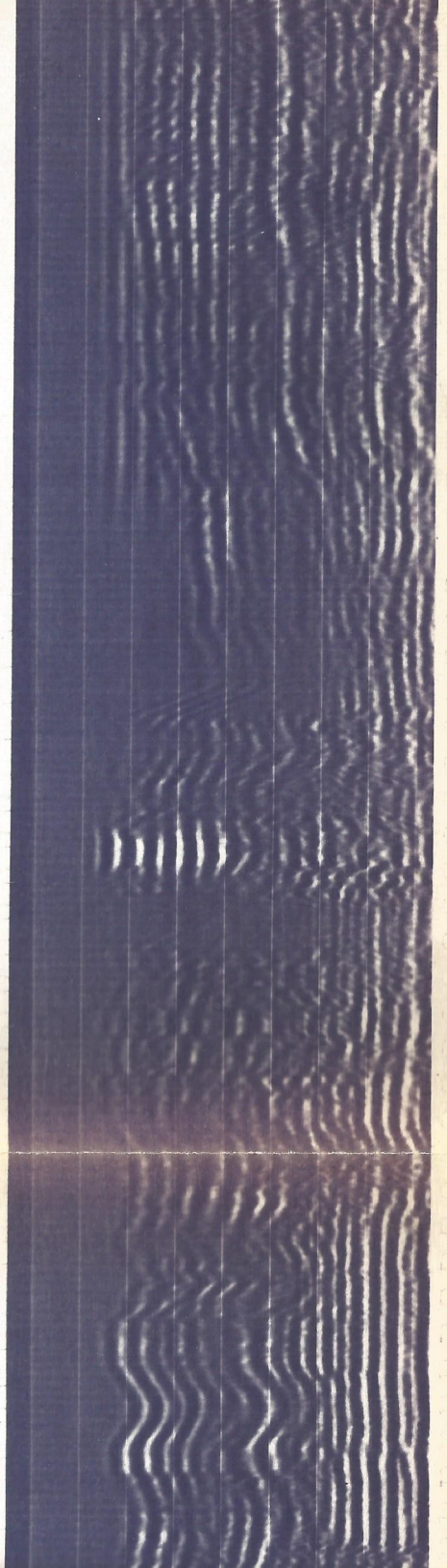


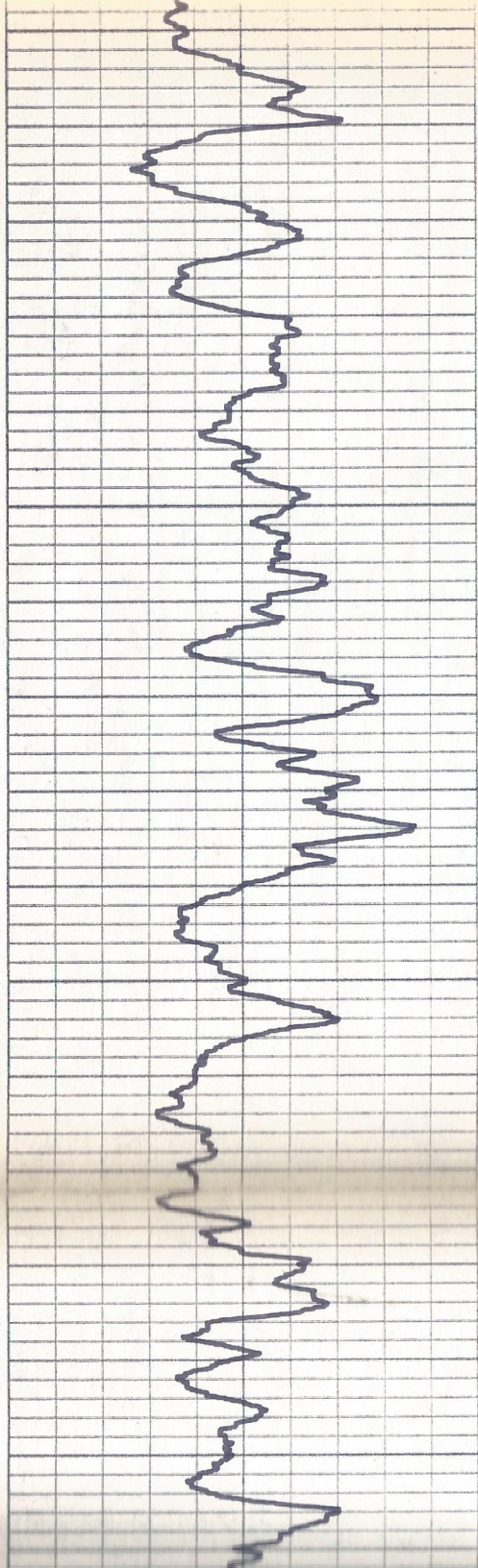


4800



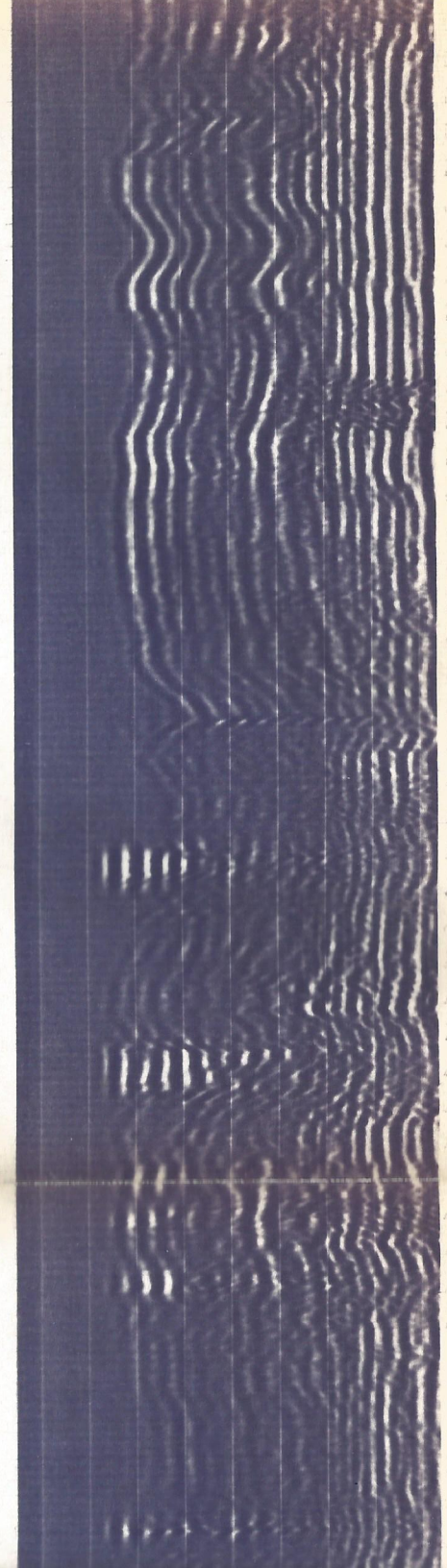
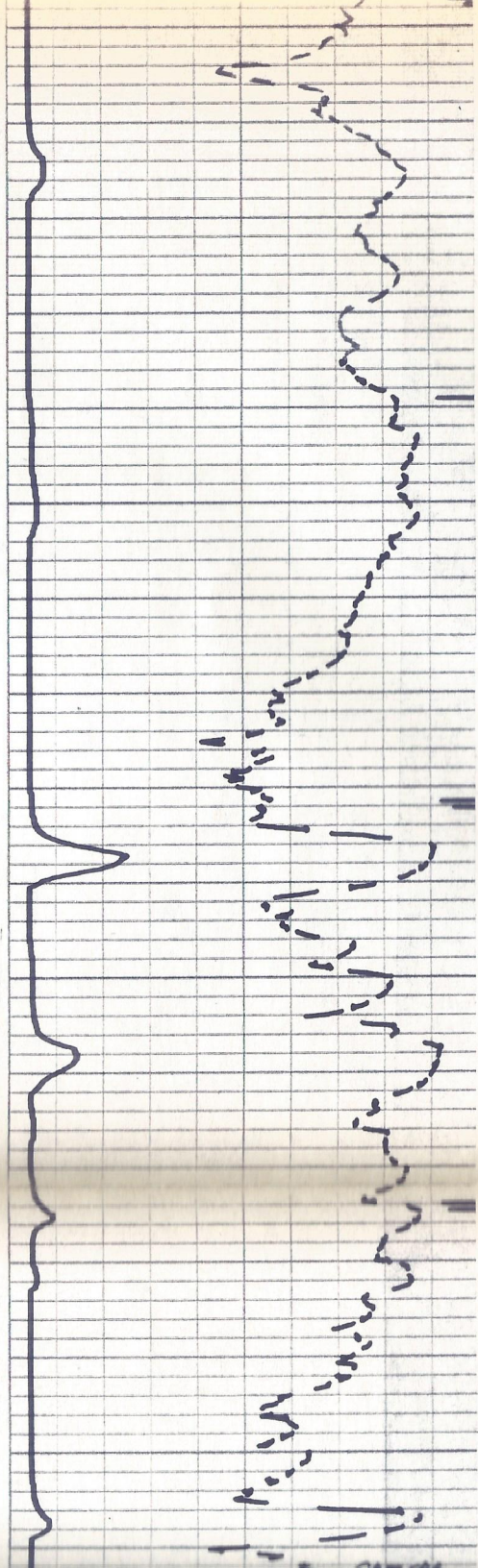
4900



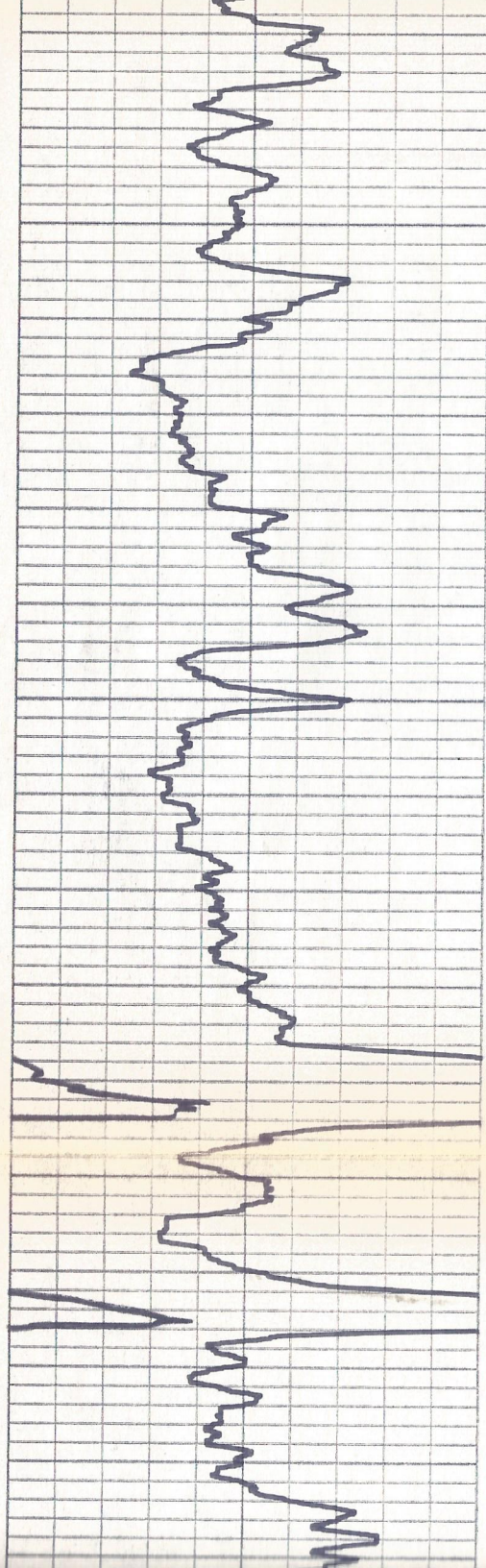


4900

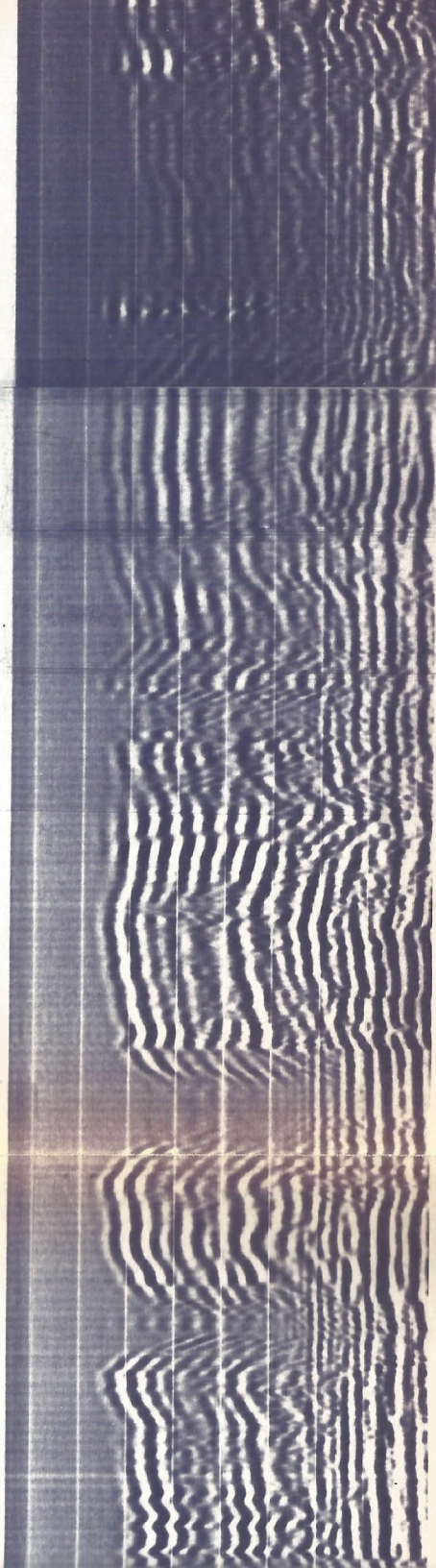
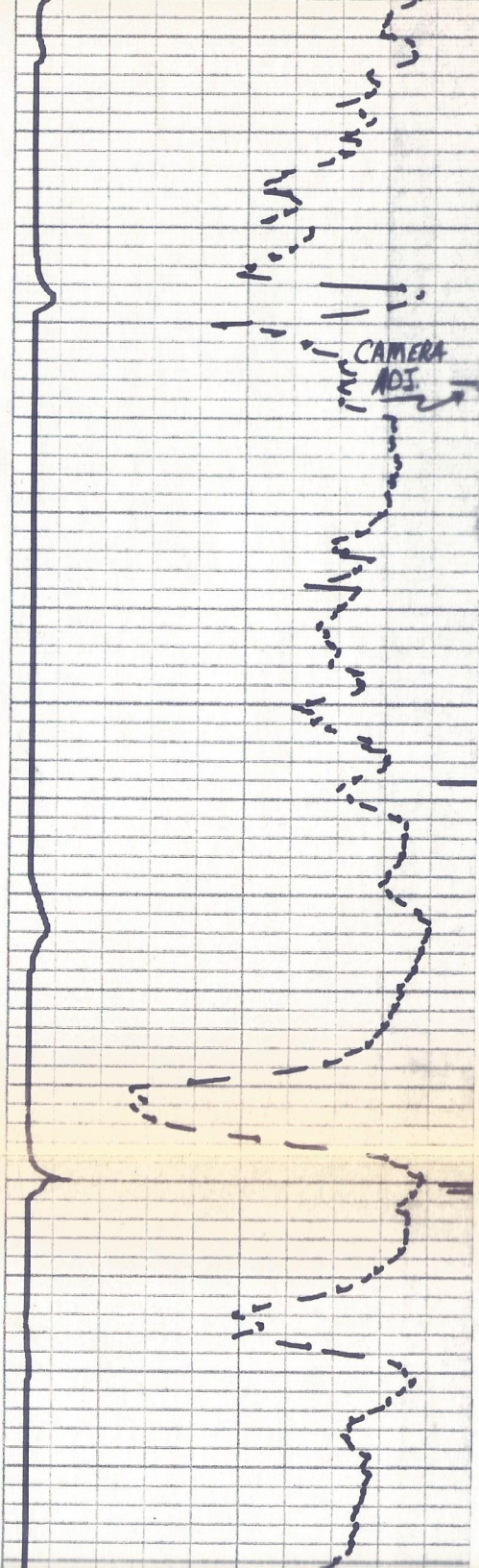
5000

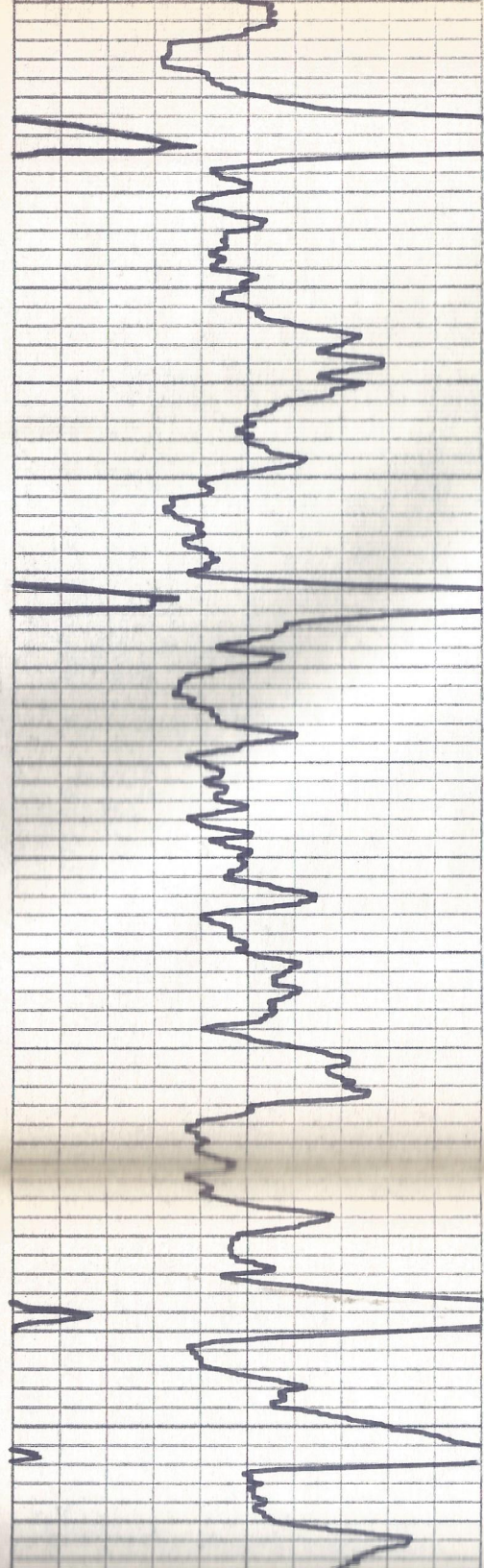


1000
1100
1200
1300
1400
1500
1600
1700
1800
1900
2000
2100
2200
2300
2400
2500
2600
2700
2800
2900
3000
3100
3200
3300
3400
3500
3600
3700
3800
3900
4000
4100
4200
4300
4400
4500
4600
4700
4800
4900
5000
5100
5200
5300
5400
5500
5600
5700
5800
5900
6000
6100
6200
6300
6400
6500
6600
6700
6800
6900
7000
7100
7200
7300
7400
7500
7600
7700
7800
7900
8000
8100
8200
8300
8400
8500
8600
8700
8800
8900
9000
9100
9200
9300
9400
9500
9600
9700
9800
9900
10000



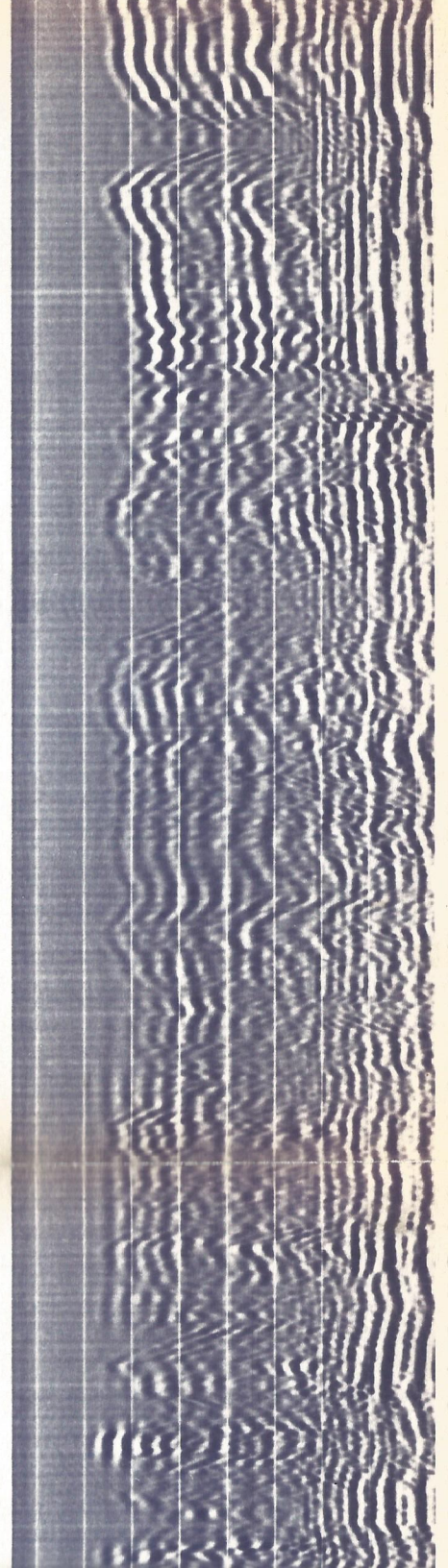
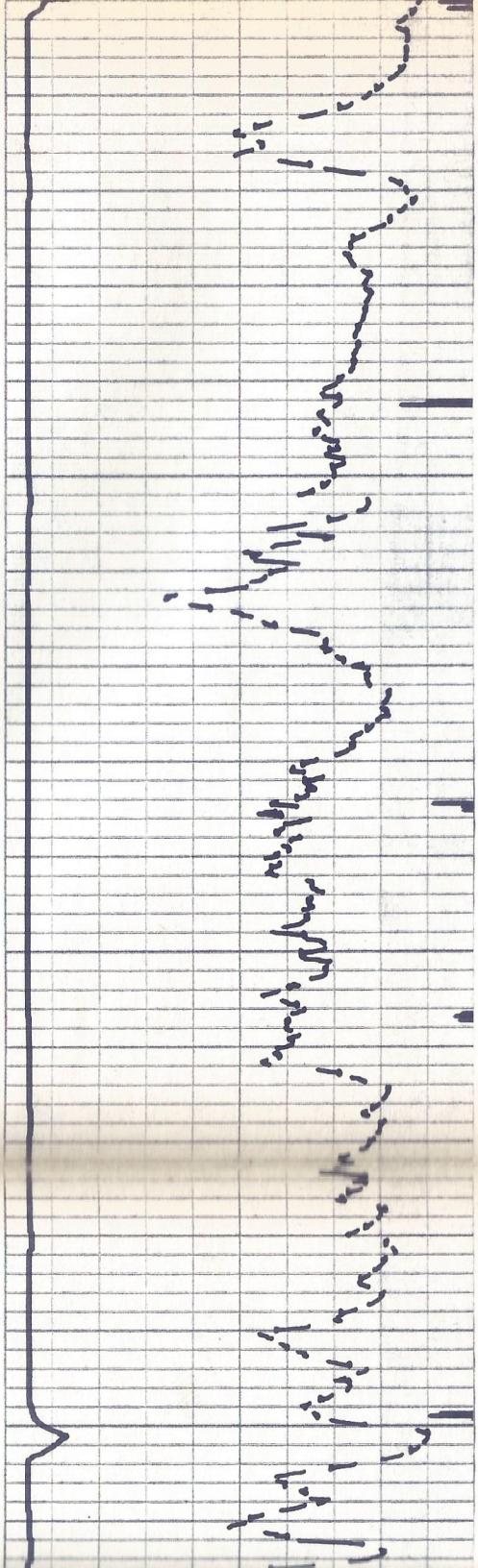
5100

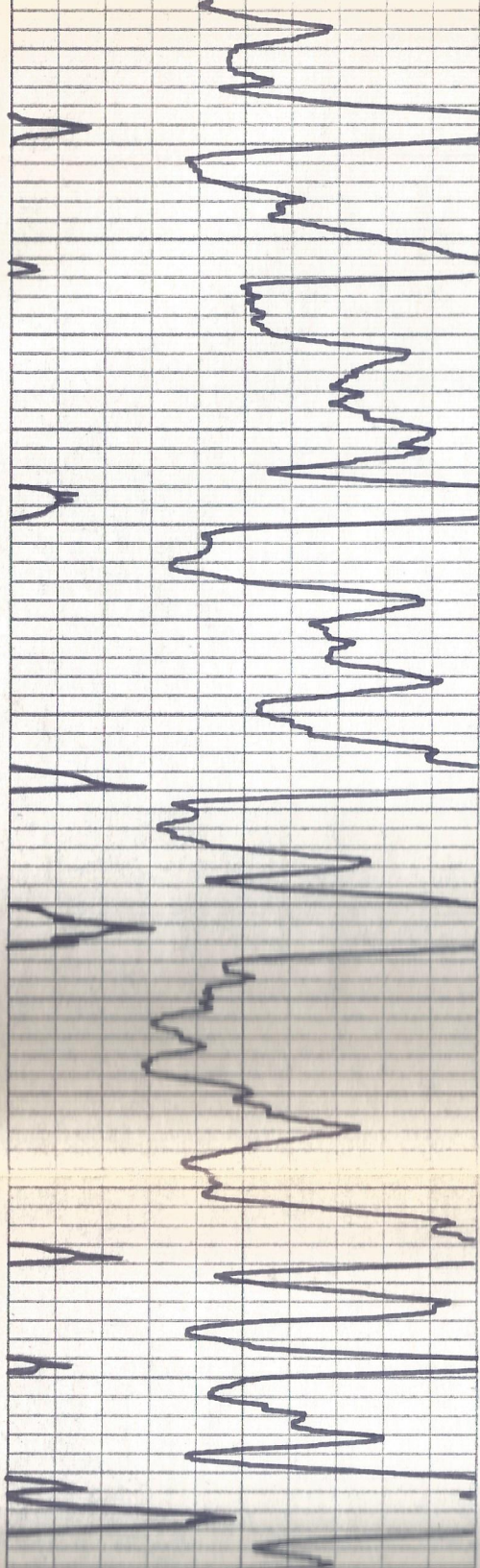




5200

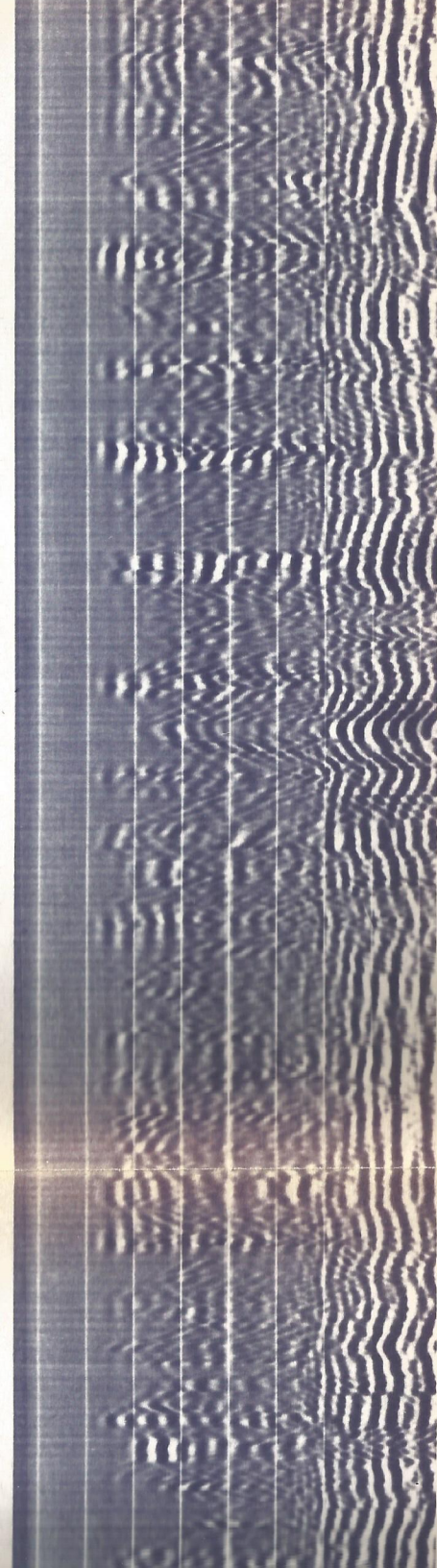
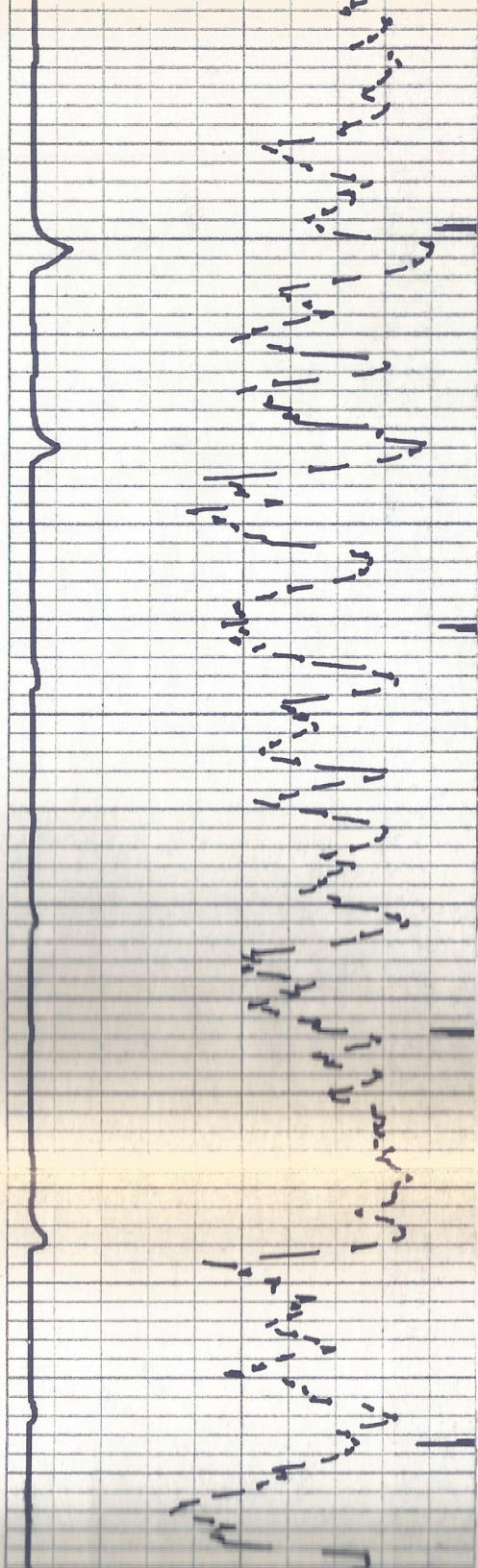
5300

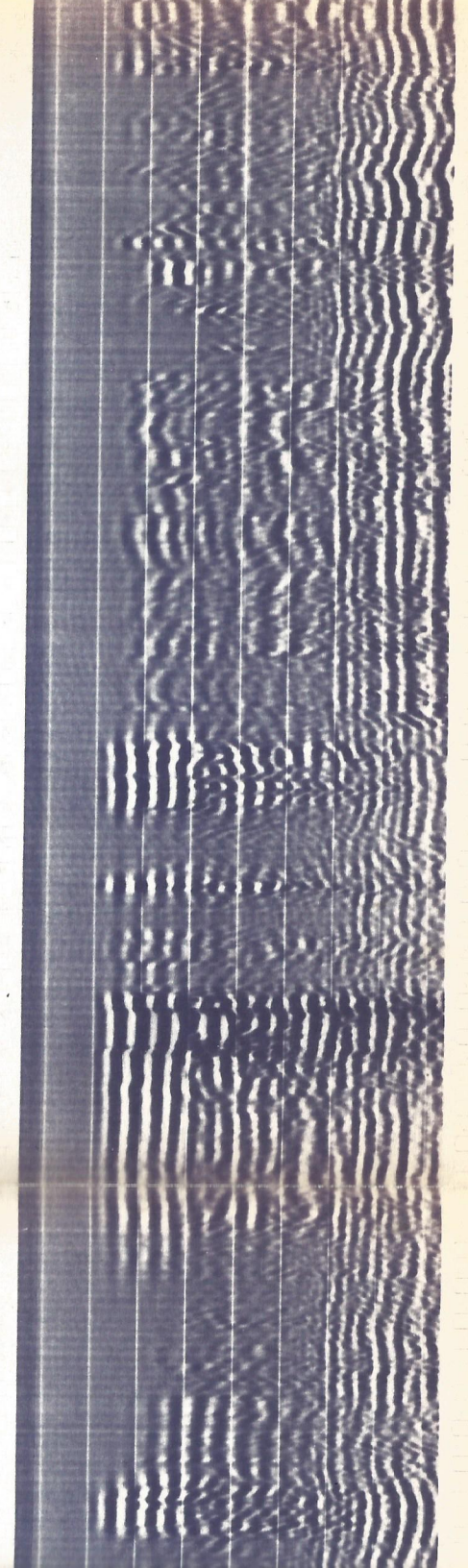
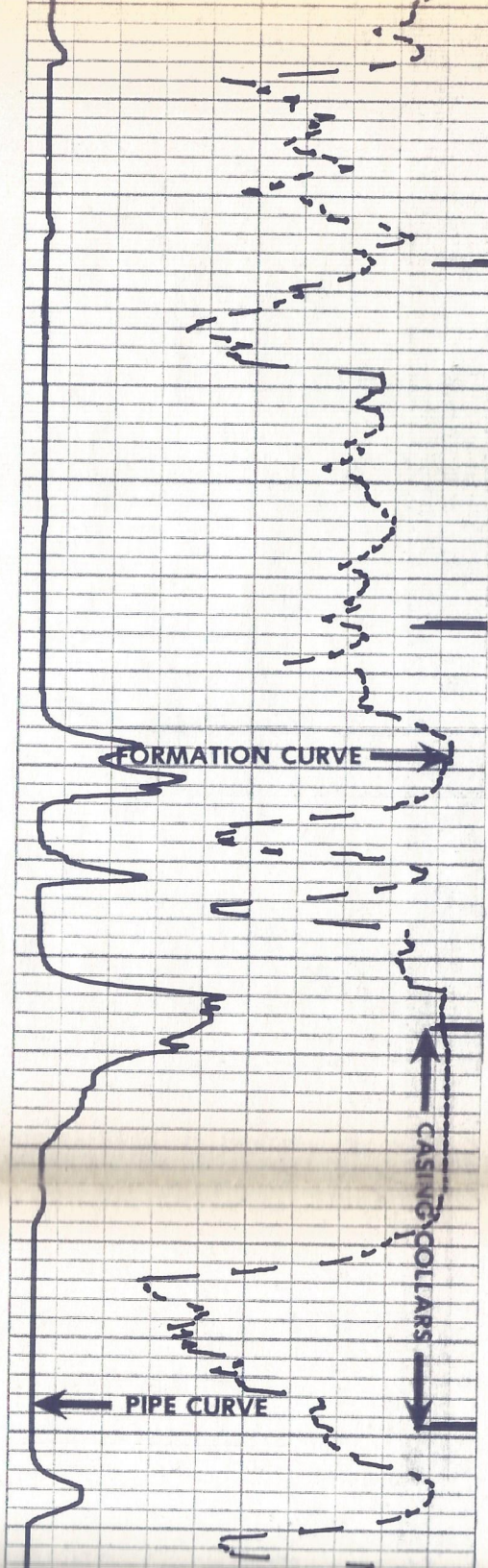
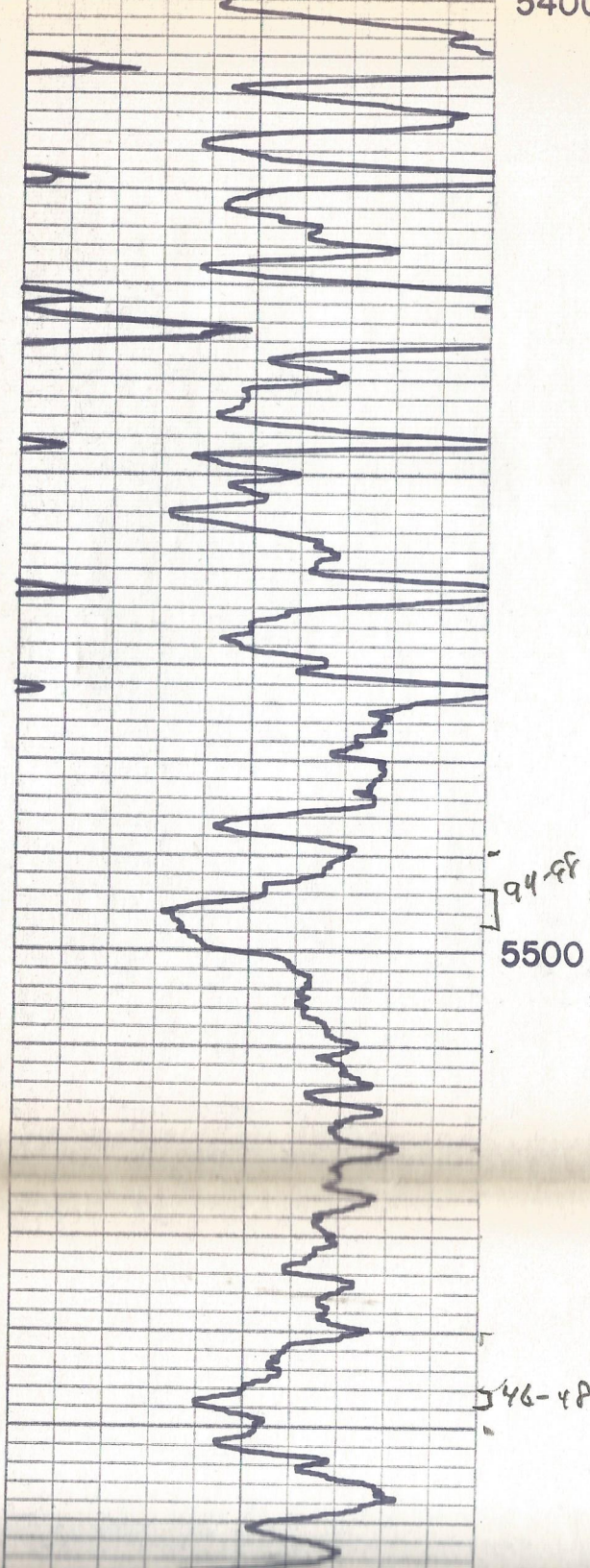


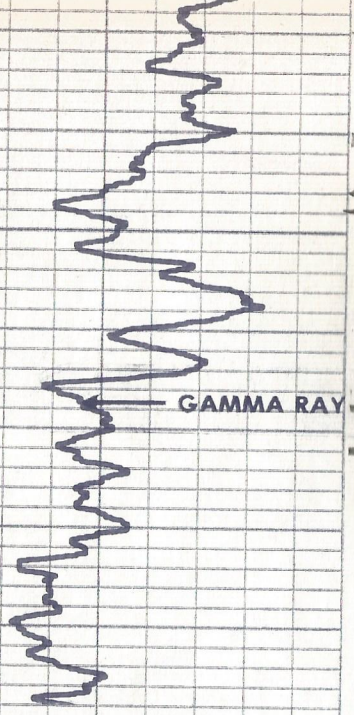


5300

5400





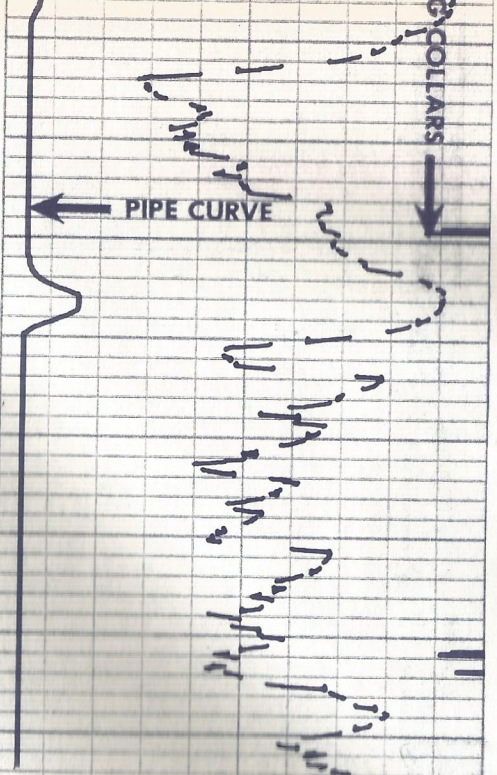


GAMMA RAY

46-48

68-72

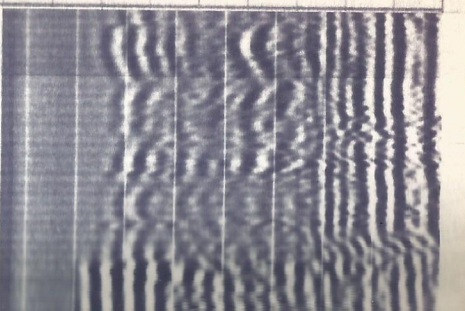
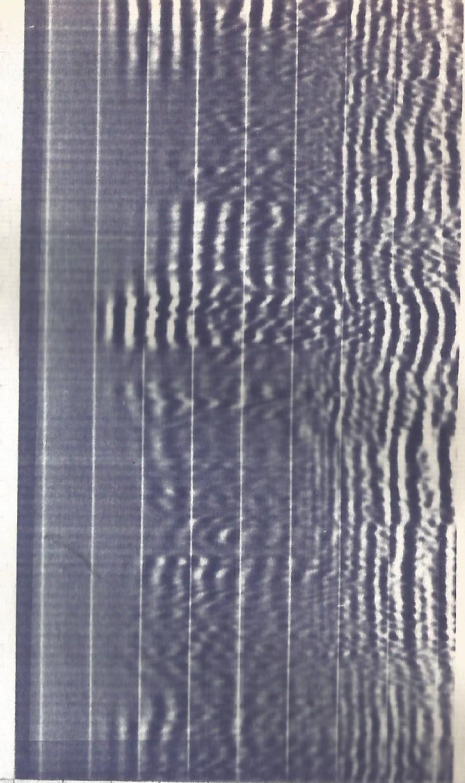
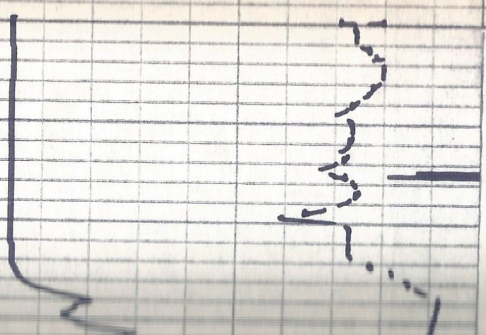
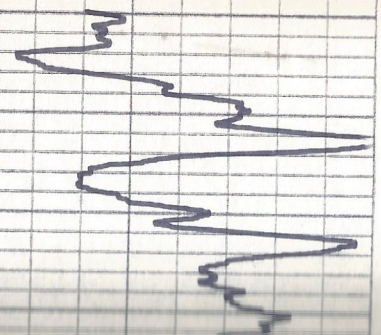
5600

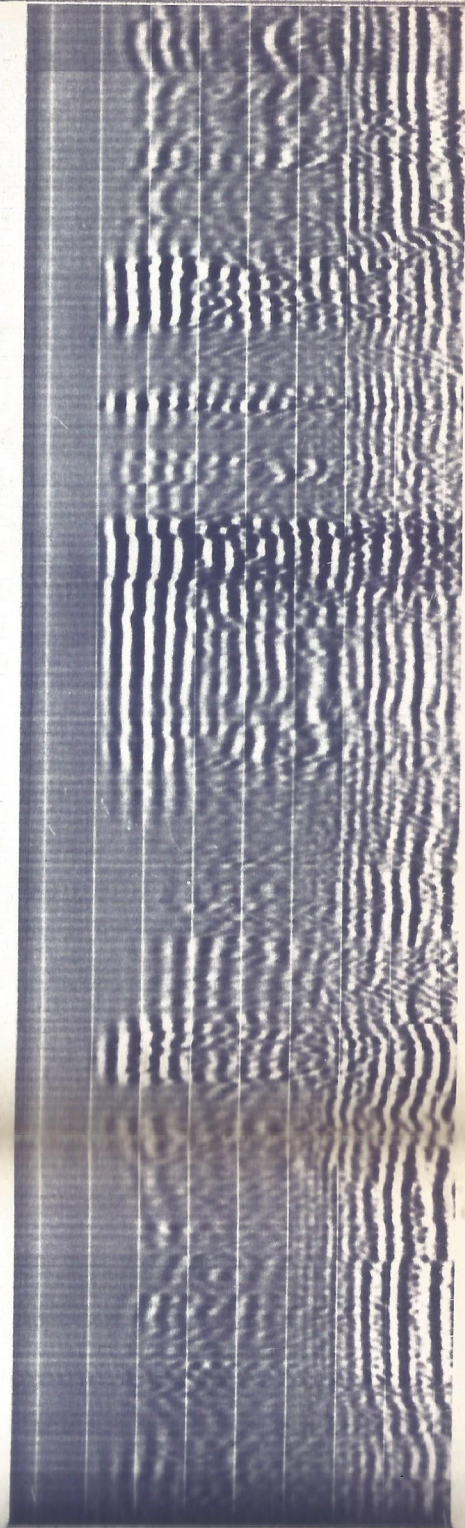
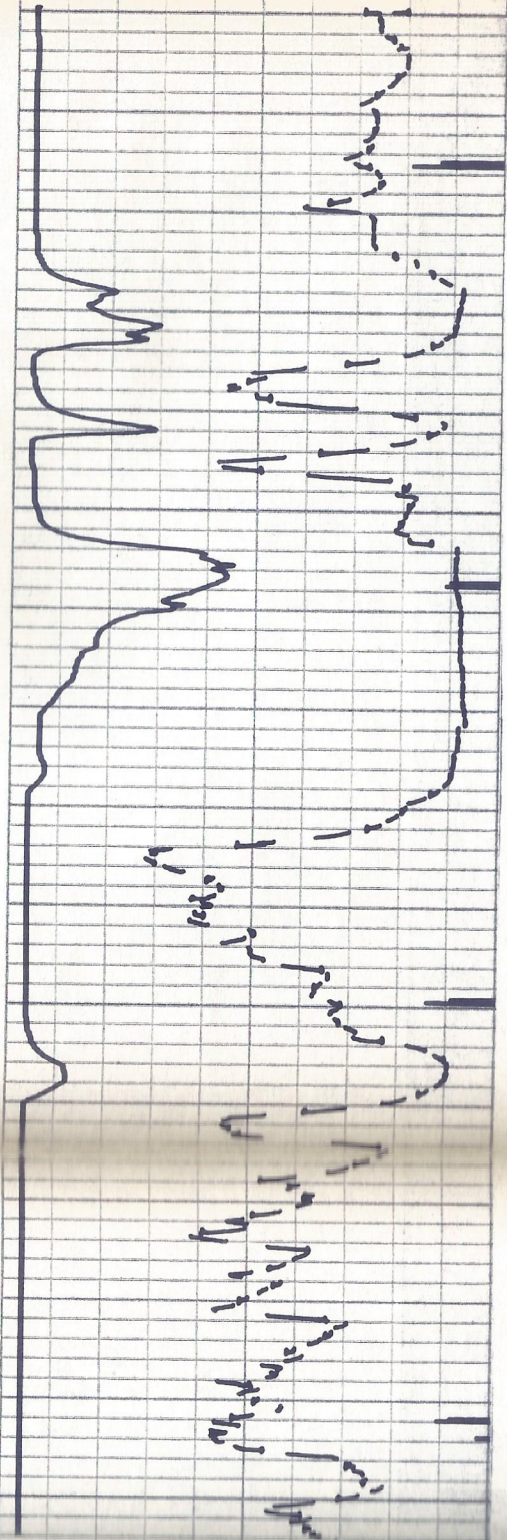
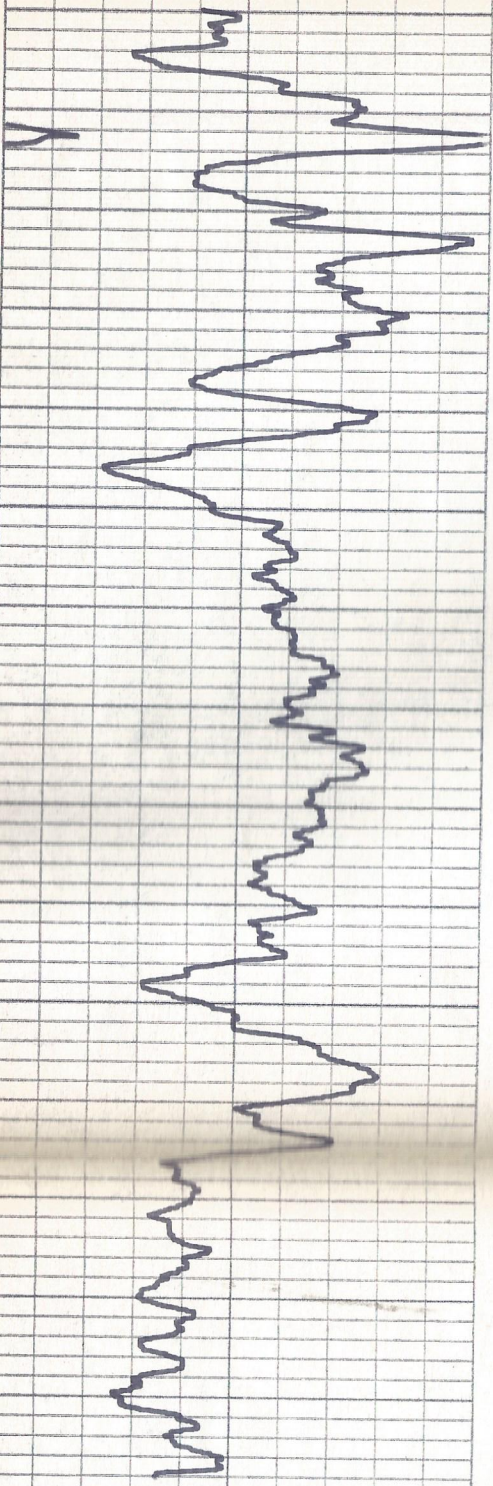


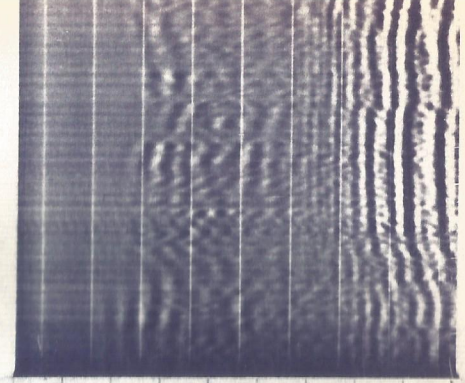
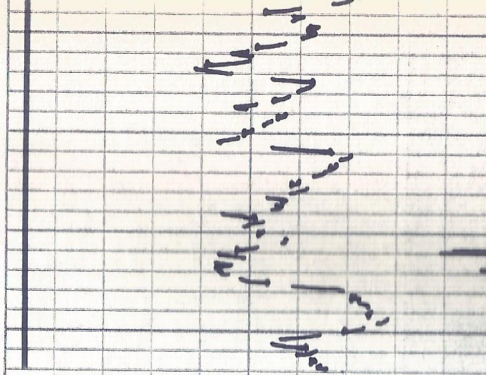
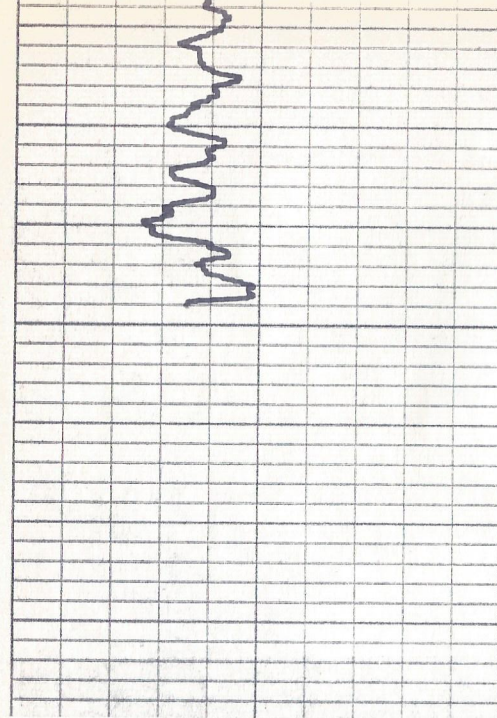
PIPE CURVE

COLLARS

REPEAT SECTION







150	300	750	250	0	1000
0	150	FORMATION CURVE			
		0	PIPE CURVE	100	
GAMMA RAY		CASING COLLARS		VIL	
DEPTHS					