

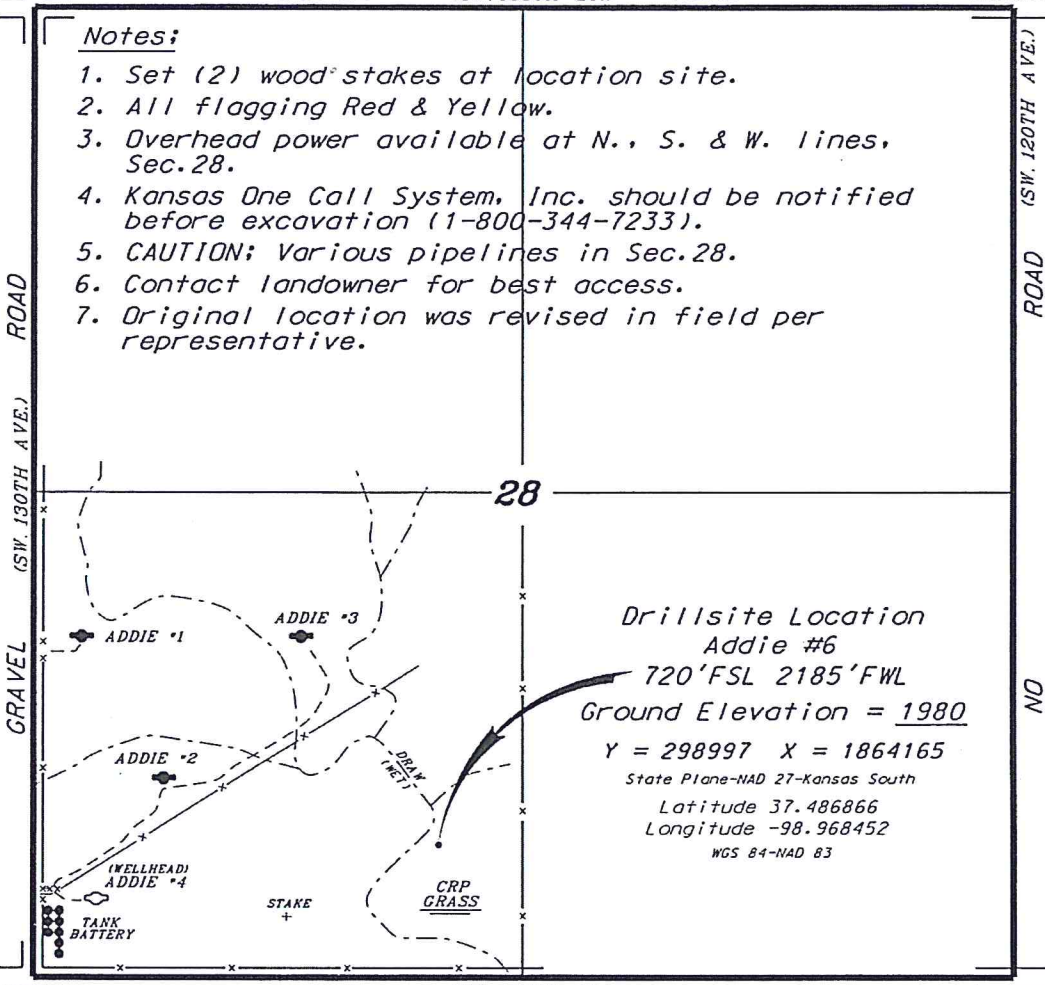
**GRIFFIN MANAGEMENT, LLC
ADDIE LEASE
SW.1/4, SECTION 28, T29S, R15W
PRATT COUNTY, KANSAS**

GRAVEL (SW. 100TH ST.) ROAD

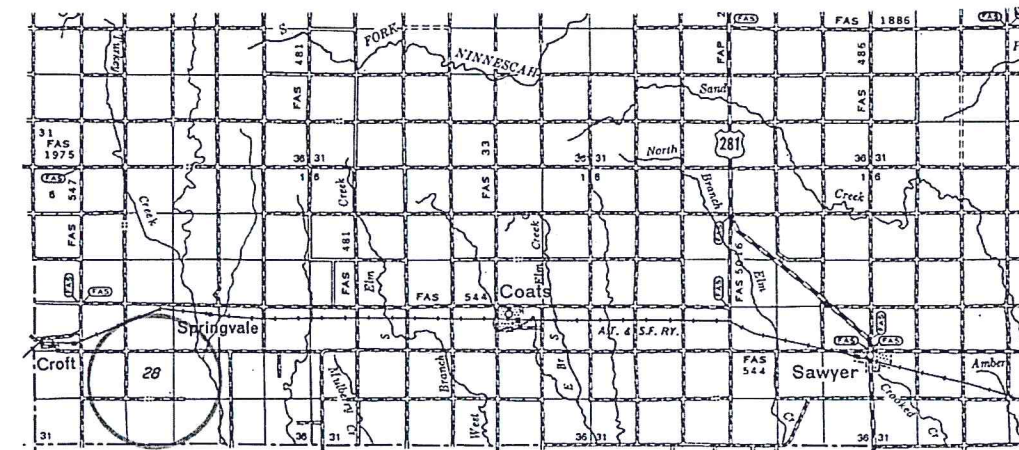
Notes:

1. Set (2) wood stakes at location site.
2. All flagging Red & Yellow.
3. Overhead power available at N., S. & W. lines, Sec. 28.
4. Kansas One Call System, Inc. should be notified before excavation (1-800-344-7233).
5. CAUTION; Various pipelines in Sec. 28.
6. Contact landowner for best access.
7. Original location was revised in field per representative.

* Ingress and egress to location as shown on this plat is per usage only and may not be legally opened for public use. Contact landowner, tenant and county road department for access.



GRAVEL (SW. 110TH ST.) ROAD



ROAD (SW. 120TH AVE.)
ROAD (SW. 130TH AVE.)
ROAD (SW. 140TH AVE.)
ROAD (SW. 150TH AVE.)
ROAD (SW. 160TH AVE.)
ROAD (SW. 170TH AVE.)
ROAD (SW. 180TH AVE.)
ROAD (SW. 190TH AVE.)
ROAD (SW. 200TH AVE.)
ROAD (SW. 210TH AVE.)
ROAD (SW. 220TH AVE.)
ROAD (SW. 230TH AVE.)
ROAD (SW. 240TH AVE.)
ROAD (SW. 250TH AVE.)
ROAD (SW. 260TH AVE.)
ROAD (SW. 270TH AVE.)
ROAD (SW. 280TH AVE.)
ROAD (SW. 290TH AVE.)
ROAD (SW. 300TH AVE.)
ROAD (SW. 310TH AVE.)
ROAD (SW. 320TH AVE.)
ROAD (SW. 330TH AVE.)
ROAD (SW. 340TH AVE.)
ROAD (SW. 350TH AVE.)
ROAD (SW. 360TH AVE.)
ROAD (SW. 370TH AVE.)
ROAD (SW. 380TH AVE.)
ROAD (SW. 390TH AVE.)
ROAD (SW. 400TH AVE.)
ROAD (SW. 410TH AVE.)
ROAD (SW. 420TH AVE.)
ROAD (SW. 430TH AVE.)
ROAD (SW. 440TH AVE.)
ROAD (SW. 450TH AVE.)
ROAD (SW. 460TH AVE.)
ROAD (SW. 470TH AVE.)
ROAD (SW. 480TH AVE.)
ROAD (SW. 490TH AVE.)
ROAD (SW. 500TH AVE.)
ROAD (SW. 510TH AVE.)
ROAD (SW. 520TH AVE.)
ROAD (SW. 530TH AVE.)
ROAD (SW. 540TH AVE.)
ROAD (SW. 550TH AVE.)
ROAD (SW. 560TH AVE.)
ROAD (SW. 570TH AVE.)
ROAD (SW. 580TH AVE.)
ROAD (SW. 590TH AVE.)
ROAD (SW. 600TH AVE.)
ROAD (SW. 610TH AVE.)
ROAD (SW. 620TH AVE.)
ROAD (SW. 630TH AVE.)
ROAD (SW. 640TH AVE.)
ROAD (SW. 650TH AVE.)
ROAD (SW. 660TH AVE.)
ROAD (SW. 670TH AVE.)
ROAD (SW. 680TH AVE.)
ROAD (SW. 690TH AVE.)
ROAD (SW. 700TH AVE.)
ROAD (SW. 710TH AVE.)
ROAD (SW. 720TH AVE.)
ROAD (SW. 730TH AVE.)
ROAD (SW. 740TH AVE.)
ROAD (SW. 750TH AVE.)
ROAD (SW. 760TH AVE.)
ROAD (SW. 770TH AVE.)
ROAD (SW. 780TH AVE.)
ROAD (SW. 790TH AVE.)
ROAD (SW. 800TH AVE.)
ROAD (SW. 810TH AVE.)
ROAD (SW. 820TH AVE.)
ROAD (SW. 830TH AVE.)
ROAD (SW. 840TH AVE.)
ROAD (SW. 850TH AVE.)
ROAD (SW. 860TH AVE.)
ROAD (SW. 870TH AVE.)
ROAD (SW. 880TH AVE.)
ROAD (SW. 890TH AVE.)
ROAD (SW. 900TH AVE.)
ROAD (SW. 910TH AVE.)
ROAD (SW. 920TH AVE.)
ROAD (SW. 930TH AVE.)
ROAD (SW. 940TH AVE.)
ROAD (SW. 950TH AVE.)
ROAD (SW. 960TH AVE.)
ROAD (SW. 970TH AVE.)
ROAD (SW. 980TH AVE.)
ROAD (SW. 990TH AVE.)
ROAD (SW. 1000TH AVE.)

SCALE 1" = 1000'

* Controlling data is based upon the best maps and photographs available to us and upon a regular section of land containing 640 acres.
 * Approximate section lines were determined using the normal standards of care of oilfield surveyors practicing in the state of Kansas. The section corners, which establish the precise section lines, were not necessarily located, and the exact location of the drillsite location in the section is not guaranteed. Therefore, the operator securing this service and accepting this plat and all other parties relying thereon agree to hold Central Kansas Oilfield Services, Inc., its officers and employees harmless from all losses, costs and expenses and solid entries released from any liability from incidental or consequential damages.
 * Elevations derived from National Geodetic Vertical Datum.

Date May 14, 2019

