

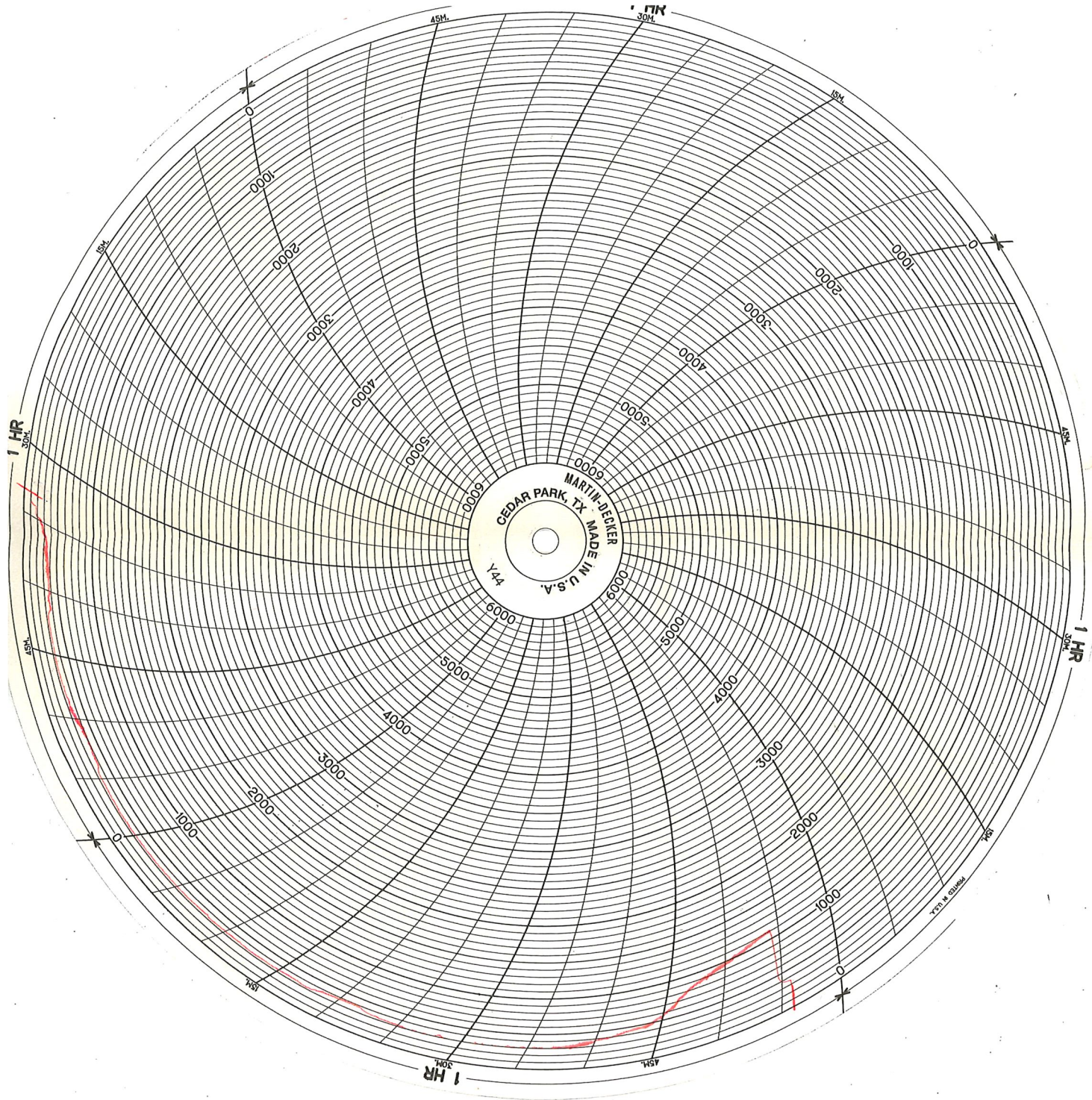
Customer LD Drilling	Lease No.	Date 3/7/2019
Lease Hickerr Farm	Well # 1-27	
Field Order # 17691	Station PT92115	Casing 5 1/2
Type Job 242/5 1/2 Longstring	Depth	County Greham
	Formation TD-3996	State KS
		Legal Description 27-65-25w

PIPE DATA		PERFORATING DATA		FLUID USED		TREATMENT RESUME		
Casing Size	Tubing Size	Shots/Ft		Acid	RATE	PRESS	ISIP	
5 1/2								
Depth 3978	Depth	From	To	Pre Pad	Max		5 Min.	
Volume 94.6	Volume	From	To	Pad	Min		10 Min.	
Max Press	Max Press	From	To	Frac	Avg		15 Min.	
Well Connection	Annulus Vol.	From	To		HHP Used		Annulus Pressure	
Plug Depth 3963	Packer Depth	From	To	Flush Water	Gas Volume		Total Load	

Customer Representative Rick Popp	Station Manager Justin Westerman	Treater Darin Franklin
--	---	-------------------------------

Service Units	92911	78822	19843	19960	19918	70889	21010				
Driver Names	Darin	Brett	Brett	Gilley	Gilley	D992	D92				

Time	Casing Pressure	Tubing Pressure	Bbbls. Pumped	Rate	Service Log
1:30am					ON LOCATION / SAFETY MEETINGS
					T-1, 2, 3, 4, 5, 12, 32, 52, 64, 74
					B-1, 11, 31, 51, 63, 73
					350SK A-CON Blend Common, 3% Calcium Chloride, 0.25pps Cellulose
					11.2 pps, 3.16 veld, 19.63 water
					150SK AA2 Cement, 10% salt, 10% Gypsum, 0.65% fluid loss, 0.5% defoamer
					0.25pps Cellulose, 6pps Gilsomite
					14.8 pps, 1.54 veld, 6.51 water
6:20am	300		5	5	Pump 5 bbls water
	300		24	5	Pump 24 bbls Flush
	300		5	5	Pump 5 bbls water
	300		197	6	mix 350SK A-con
	300		41	6	mix 150SK AA2
					Shut down
					Wash pump & lines & release plug
	200		0	5	Start displacement
	500		60	5	Light Pressure
	800		84	3	Slow Rate
					circulate 20SK
7:40pm	1500		94	3	Bump Plug
					Flow - Hold



03-07-19
 L.D. Drilling
 Hickert Farm 1-27
 Graham, KS
 Cement Longstring