



BASICSM
ENERGY SERVICES
PRESSURE PUMPING & WIRELINE

10244 NE Hwy. 61
P.O. Box 8613
Pratt, Kansas 67124
Phone 620-672-1201

FIELD SERVICE TICKET
1718 17793 A

Total MH - 52

DATE _____ TICKET NO. _____

DATE OF JOB 4-5-2019	DISTRICT Pratt, KS. #1718	NEW WELL <input checked="" type="checkbox"/>	OLD WELL <input type="checkbox"/>	PROD <input type="checkbox"/>	INJ <input type="checkbox"/>	WDW <input type="checkbox"/>	CUSTOMER ORDER NO.:			
CUSTOMER LD Drilling INC		LEASE Terry		WELL NO. 1-24						
ADDRESS		COUNTY Rooks		STATE Kansas						
CITY		STATE		SERVICE CREW Carl B. Eddie M. Ron G.						
AUTHORIZED BY		JOB TYPE: 5 1/2 Production Casing 2-42								
EQUIPMENT#	HRS	EQUIPMENT#	HRS	EQUIPMENT#	HRS	TRUCK CALLED	DATE	AM	PM	TIME
84980-20920	.75					4-4-19				8:00
19959-19918	.25					ARRIVED AT JOB				11:15
						START OPERATION				3:05
						FINISH OPERATION				3:45
						RELEASED				4:30
						MILES FROM STATION TO WELL				

CONTRACT CONDITIONS: (This contract must be signed before the job is commenced or merchandise is delivered).

The undersigned is authorized to execute this contract as an agent of the customer. As such, the undersigned agrees and acknowledges that this contract for services, materials, products, and/or supplies includes all of and only those terms and conditions appearing on the front and back of this document. No additional or substitute terms and/or conditions shall become a part of this contract without the written consent of an officer of Basic Energy Services LP.

SIGNED: Mark Davis By DLScott
(WELL OWNER, OPERATOR, CONTRACTOR OR AGENT)

ITEM/PRICE REF. NO.	MATERIAL, EQUIPMENT AND SERVICES USED	UNIT	QUANTITY	UNIT PRICE	\$ AMOUNT	
CP 105	AA2 Cement	SK	150		2550 -	
CP 103	60/40 Poz	SX	30		360 -	
CC 102	cello Flake	lb	38		146 60	
CC 105	C-41P	lb	71		284 -	
CC 111	Salt	lb	814		467 -	
CC 113	Gypsum	lb	705		528 75	
CC 148	C-17	lb	92		1840 -	
CC 201	Gilsonite	lb	901		603 67	
CE 1251	Auto fill float shoe	ea	1		360 -	
CE 1907	latch down plug + handle basket	ea	3		400 -	
CE 1651	Turbolizers	ea	10		870 -	
CE 481	Port collar	ea	1		1100 -	
CC 151	mud flush	Gal.	1000		3500 -	
E 100	light vehicle mileage	Mi	100		1500 -	
E 101	heavy vehicle mileage	Mi	200		450 -	
E 113	Bulk delivery charges per ten mile	Tn	84		1500 -	
CE 204	Depth Change 3001-4000' (4 hr)	Hr	1		2087 50	
CE 240	Blending + mixing charge	SX	180		2160 -	
CE 504	plug container utilization charge	Job	1		252 -	
5003	service supervisor charge	ea	1		250 -	
					SUB TOTAL	175 -

CHEMICAL / ACID DATA:		

SERVICE & EQUIPMENT	%TAX ON \$	15088 52
MATERIALS	%TAX ON \$	27,318 52

TOTAL
12,791 .12

SERVICE REPRESENTATIVE Carl Baldery
FIELD SERVICE ORDER NO. _____

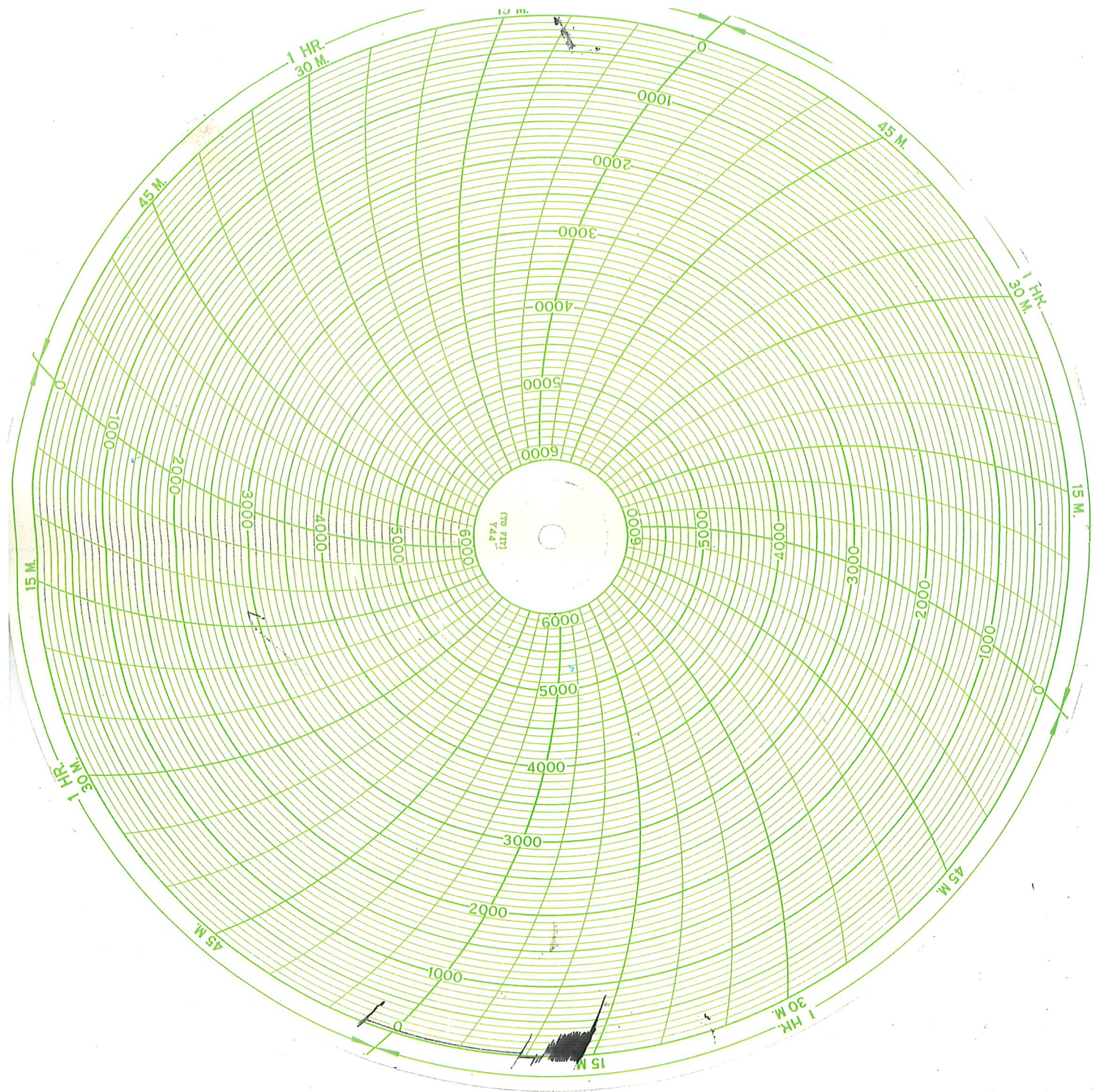
THE ABOVE MATERIAL AND SERVICE ORDERED BY CUSTOMER AND RECEIVED BY: Mark Davis By DLScott
(WELL OWNER OPERATOR CONTRACTOR OR AGENT)

Customer <i>LD Drilling Co.</i>	Lease No.	Date <i>4-5-2019</i>	
Lease <i>Terry</i>	Well # <i>1-24</i>		
Field Order #	Station <i>Pratt KS.</i>	Casing <i>5 1/2</i>	Depth
Type Job <i>Production Casing</i>	County <i>Rooks</i>	State <i>KS.</i>	
Formation	Legal Description <i>24-65-18w</i>		

PIPE DATA		PERFORATING DATA		FLUID USED		TREATMENT RESUME		
Casing Size	Tubing Size	Shots/Ft		Acid		RATE	PRESS	ISIP
<i>5 1/2</i>				Pre Pad		Max		5 Min.
Depth <i>3564</i>	Depth	From	To	Pad		Min		10 Min.
Volume <i>84.5</i>	Volume	From	To	Frac		Avg		15 Min.
Max Press <i>1100</i>	Max Press	From	To	HHP Used				Annulus Pressure
Well Connection <i>Head inverted</i>	Annulus Vol.	From	To	Flush		Gas Volume		Total Load
Plug Depth	Packer Depth	From	To					

Customer Representative <i>Dave Scott</i>	Station Manager <i>Justin Westerman</i>	Treater <i>Carl Balding</i>
Service Units <i>84980 20920 19959 19918</i>		
Driver Names <i>Eddie M Ron G</i>		

Time	Casing Pressure	Tubing Pressure	Bbls. Pumped	Rate	Service Log
					on location + Rig up
					Run 3564' 5 1/2 casing + float equipment Port collar @ 1462.57
<i>2:00 AM</i>					Drop ball for shoe + circulate with rig for 1 hour
					Rig up to cement
<i>3:05 AM</i>	<i>200</i>		<i>5</i>	<i>4</i>	start 5 Bbls Fresh
	<i>200</i>		<i>24</i>	<i>4</i>	24 Bbls mid flush
	<i>200</i>		<i>5</i>	<i>4</i>	5 Fresh
<i>3:10 AM</i>	<i>250</i>		<i>41</i>	<i>5 1/2</i>	Mix + pump 150 sx AA2 cement
					Cement in wash pump + lines
					Release plug + start Displacement
	<i>300</i>		<i>68</i>	<i>5 1/2</i>	68 Bbls out see hit + pressure
	<i>700</i>		<i>74 1/2</i>	<i>2 1/2</i>	74 1/2 Bbls out slow Rate
<i>3:45 AM</i>	<i>1100</i>		<i>84 1/2</i>	<i>2</i>	84 1/2 Bbls out land plug
					Release pressure + float held
			<i>7.4</i>	<i>3</i>	Plug Rat w/ 30 sx 60-40-10z



04-05-19
L.D. Drilling
Terry 1-24
Rooks, KS
Cement Producing Casing