



Fall & Associates
 Stake and Elevation Service
 719 W. 5th Street
 P.O. Box 404
 Concordia, KS. 66901
 1-800-536-2821

Date June 15, 2019

Invoice Number _____

CHOLLA PRODUCTION, LLC

3-12 SWD

Patterson

Operator

Number

Farm Name

Formerly Frontier Howat #1

Trego-KS

12

11s

23w

330' FNL 1650' FWL

County-State

S

T

R

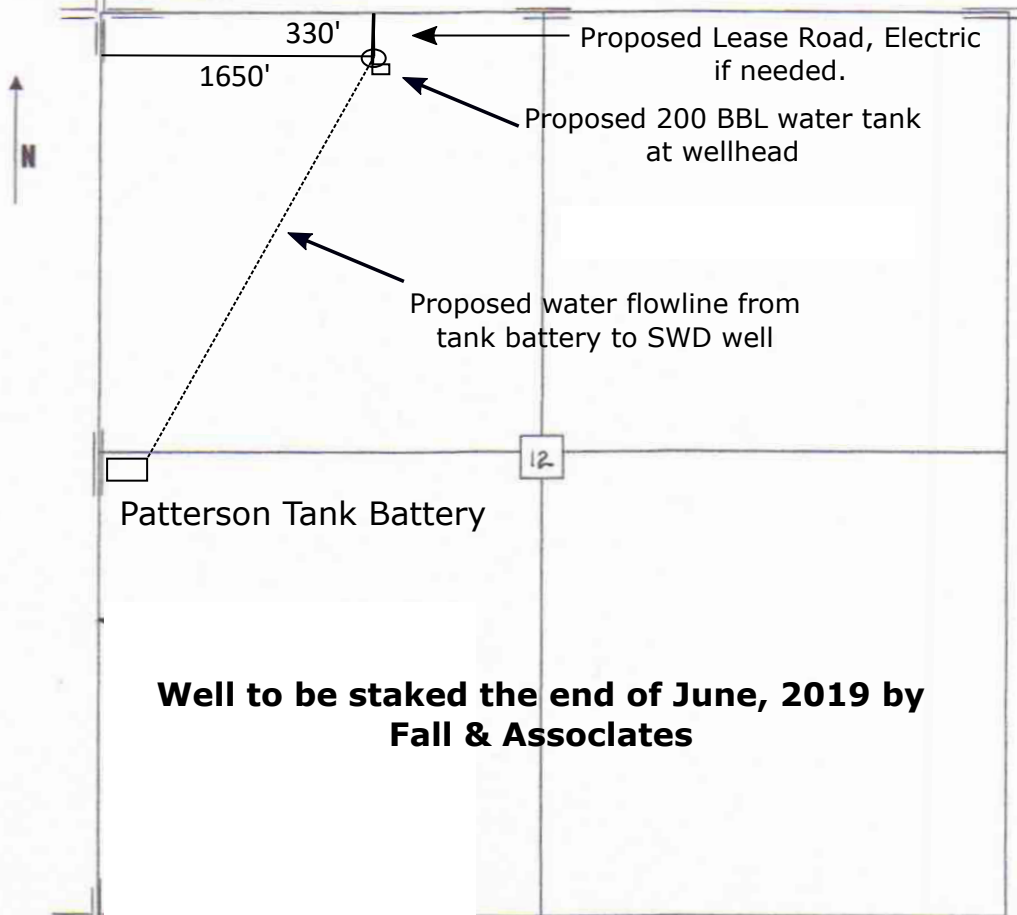
Location

Cholla Production, LLC
 10390 Bradford Rd.
 Suite 201
 Littleton, CO. 80127

Elevation 2245'

Ordered By: Bill

Scale 1"=1000'



**Well to be staked the end of June, 2019 by
 Fall & Associates**