



**Fall & Associates**  
 Stake and Elevation Service  
 P.O. Box 222  
 Pretty Prairie, KS. 67570  
 785-243-7506

Date 5-6-19

Invoice Number 050119

MURFIN DRILLING

5-17

Jones 'A'

Operator

Number

Farm Name

Cheyenne-KS

17

1s

37w

1980'FNL 2080'FWL

~~1980'FNL 1980'FWL~~

County-State

S

T

R

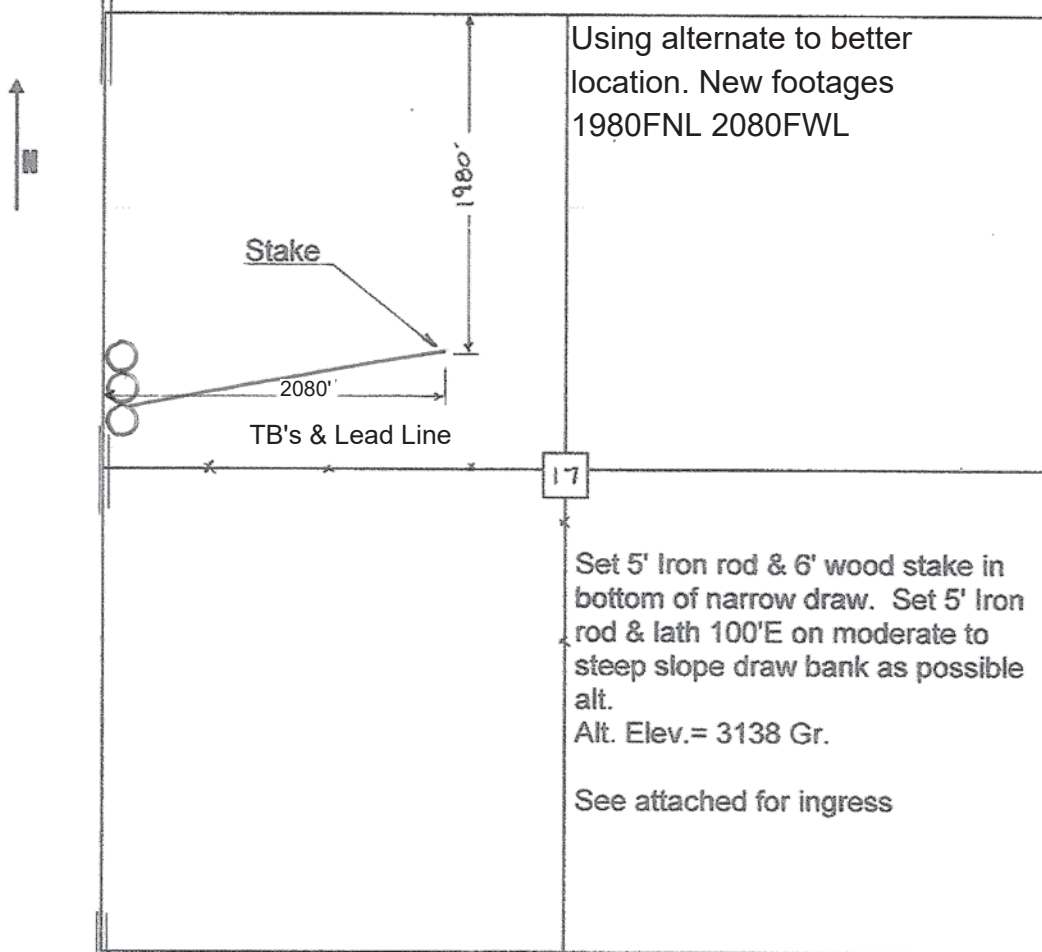
Location

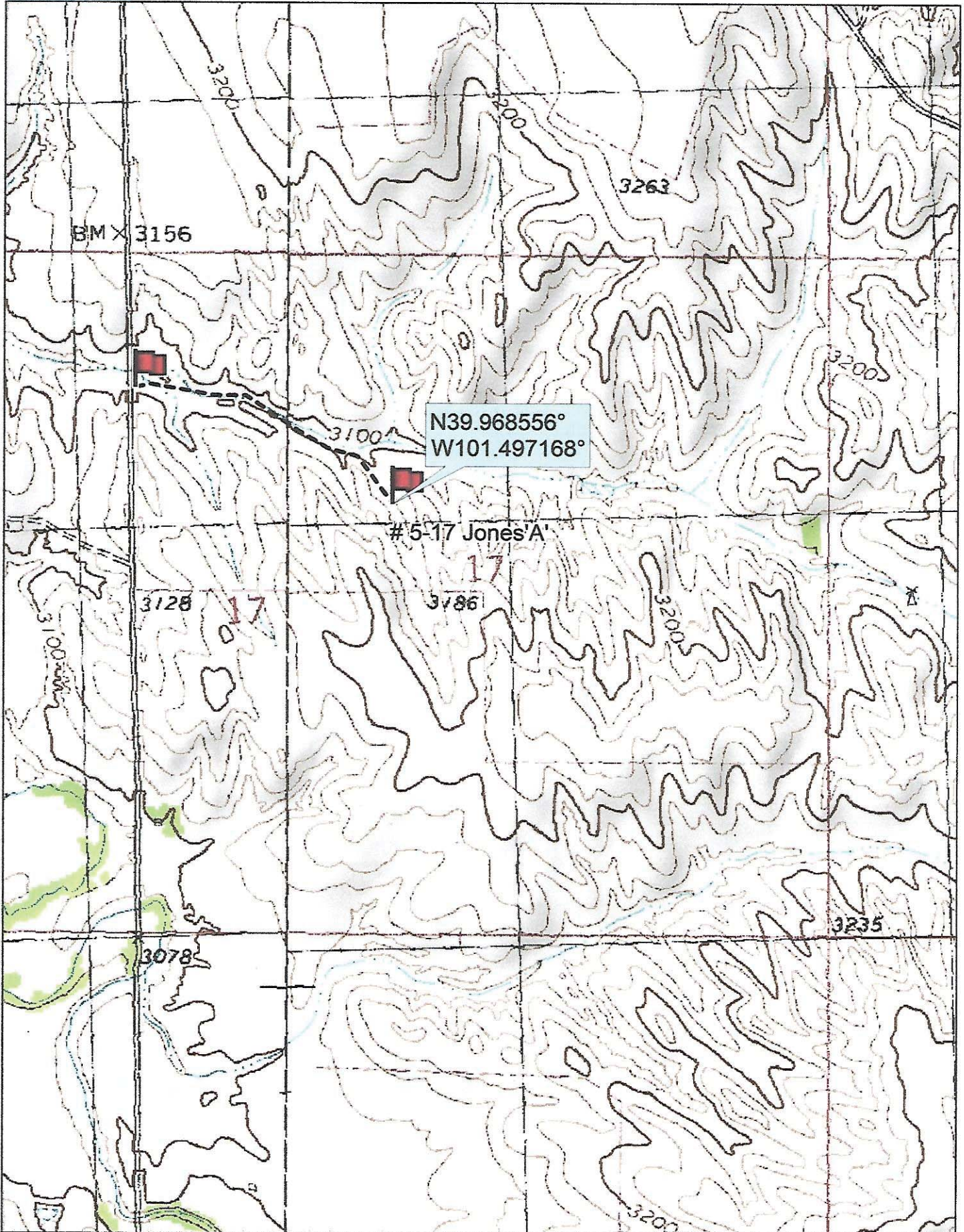
Murfin Drilling  
 250 N Water  
 Suite 300  
 Wichita, KS. 67202

Elevation 3118 Gr.

Ordered By: Shauna

Scale 1"=1000'





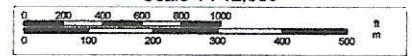
Data use subject to license.

© DeLorme. Topo North America™ 9.

www.delorme.com



Scale 1 : 12,000



1" = 1,000.0 ft

Data Zoom 13-1