

ADVANTAGE ELEVATIONS

OIL FIELD SURVEYORS

BOX 8604 - PRATT, KS 67124
(620) 672-6491

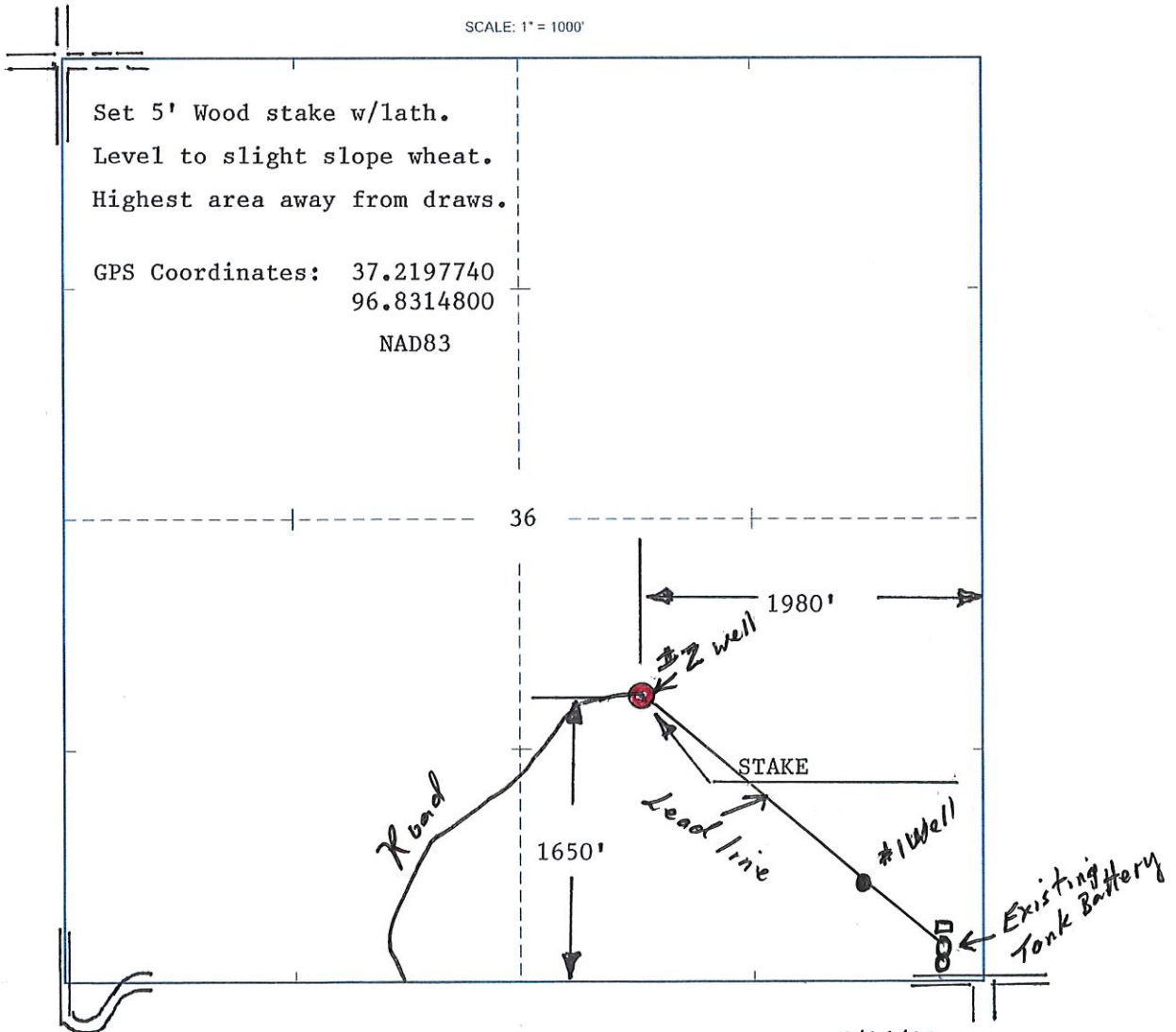
516192
INVOICE NO.

VAL ENERGY INC OPERATOR 2-36 NO. ANDES FARM
COWLEY COUNTY 36 S 32s T 5e R 1650' FSL & 1980' FEL of Sec LOCATION
ELEVATION: 1214' GR



VAL ENERGY INC
125 N Market St. Ste 1110
Wichita, KS 67202

AUTHORIZED BY: Todd Allam



DATE STAKED: 5/16/19