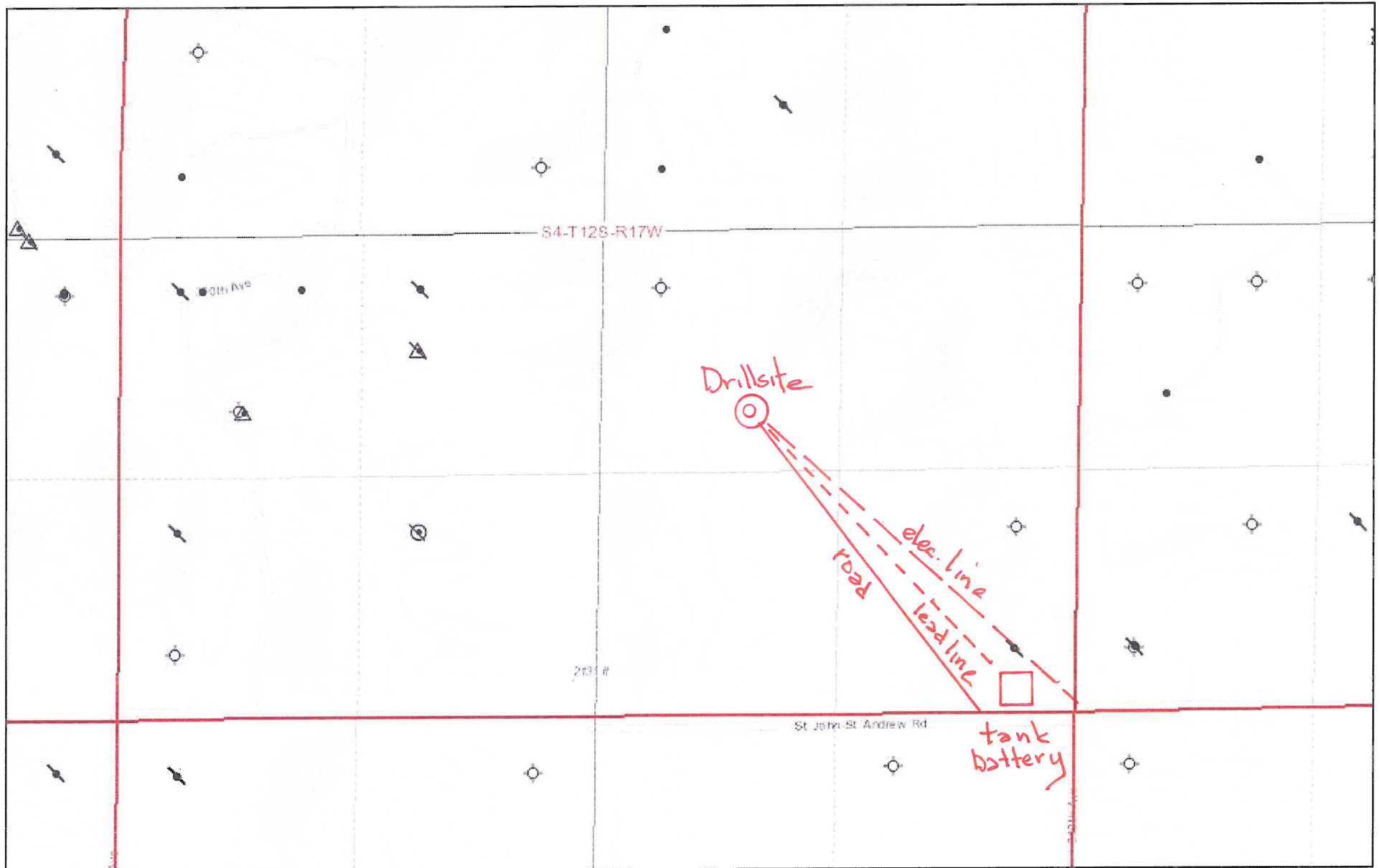
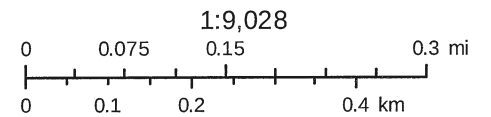


# PRELIMINARY PLAT#1 Schmeid Ranch /DaMar Resources, Inc.



July 5, 19



Sources: Esri, HERE, Garmin, Intermap, increment P Corp., GEBCO, USGS, FAO, NPS, NRCAN, GeoBase, IGN, Kadaster NL, Ordnance Survey, Esri