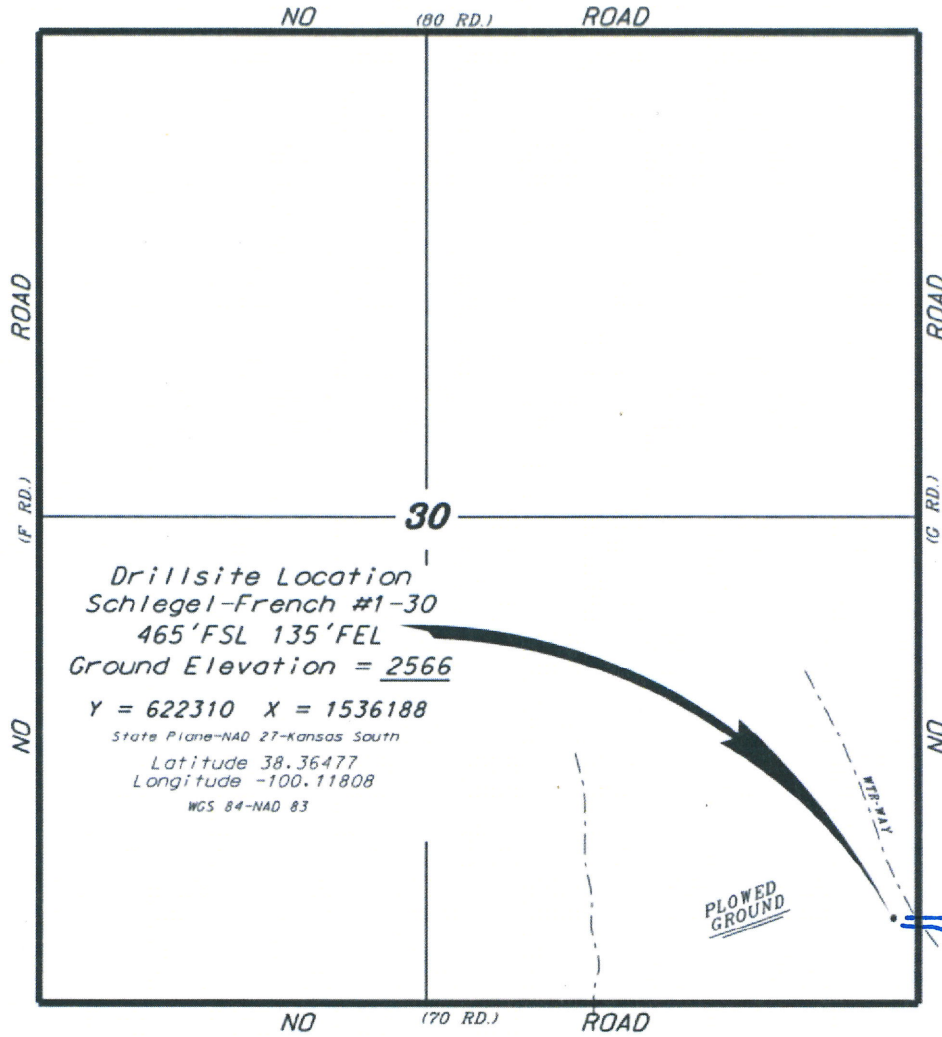
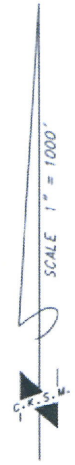


BLUERIDGE PETROLEUM CORPORATION
 SCHLEGEL-FRENCH LEASE
 SE. 1/4, SECTION 30, T19S, R25W
 NESS COUNTY, KANSAS



Drillsite Location
 Schlegel-French #1-30
 465' FSL 135' FEL
 Ground Elevation = 2566
 Y = 622310 X = 1536188
 State Plane-NAD 27-Kansas South
 Latitude 38.36477
 Longitude -100.11808
 WGS 84-NAD 83



*Ingress and egress to location as shown on this
 diagram is for usage only and may not be legally
 opened for public use. Contact landowner,
 tenant and county road department for access.

LEGEND

- Well Location
- Tank Battery Location
- Pipeline Location
- Electric Line Location
- Lease Road Location

• Controlling data is based upon the best maps and photographs available to us and upon a regular section of land containing 640 acres.
 • Approximate section lines were determined using the normal standard of care of oilfield surveyors practicing in the state of Kansas. The section corners, which establish the precise section lines, were not necessarily located, and the exact location of the drillsite location in the section is not guaranteed. Therefore, the operator securing this service and accepting this plot and all other parties relying thereon agree to hold Central Kansas Oilfield Services, Inc., its officers and employees harmless from all losses, costs and expenses and said entities released from any liability from incidental or consequential damages.
 • Elevations derived from National Geodetic Vertical Datum.

Date September 18, 2019

Battery in Sec. 29