

KANSAS CORPORATION COMMISSION  
OIL & GAS CONSERVATION DIVISION

TEMPORARY ABANDONMENT WELL APPLICATION

OPERATOR: License# \_\_\_\_\_  
 Name: \_\_\_\_\_  
 Address 1: \_\_\_\_\_  
 Address 2: \_\_\_\_\_  
 City: \_\_\_\_\_ State: \_\_\_\_\_ Zip: \_\_\_\_\_ + \_\_\_\_\_  
 Contact Person: \_\_\_\_\_  
 Phone: ( \_\_\_\_\_ ) \_\_\_\_\_  
 Contact Person Email: \_\_\_\_\_  
 Field Contact Person: \_\_\_\_\_  
 Field Contact Person Phone: ( \_\_\_\_\_ ) \_\_\_\_\_

API No. 15- \_\_\_\_\_  
 Spot Description: \_\_\_\_\_  
 \_\_\_\_\_ - \_\_\_\_\_ - \_\_\_\_\_ - \_\_\_\_\_ Sec. \_\_\_\_\_ Twp. \_\_\_\_\_ S. R. \_\_\_\_\_  E  W  
 \_\_\_\_\_ feet from  N /  S Line of Section  
 \_\_\_\_\_ feet from  E /  W Line of Section  
 GPS Location: Lat: \_\_\_\_\_, Long: \_\_\_\_\_  
(e.g. xx.xxxxx) (e.g. -xxx.xxxxx)  
 Datum:  NAD27  NAD83  WGS84  
 County: \_\_\_\_\_ Elevation: \_\_\_\_\_  GL  KB  
 Lease Name: \_\_\_\_\_ Well #: \_\_\_\_\_  
 Well Type: (check one)  Oil  Gas  OG  WSW  Other: \_\_\_\_\_  
 SWD Permit #: \_\_\_\_\_  ENHR Permit #: \_\_\_\_\_  
 Gas Storage Permit #: \_\_\_\_\_  
 Spud Date: \_\_\_\_\_ Date Shut-In: \_\_\_\_\_

	Conductor	Surface	Production	Intermediate	Liner	Tubing
Size						
Setting Depth						
Amount of Cement						
Top of Cement						
Bottom of Cement						

Casing Fluid Level from Surface: \_\_\_\_\_ How Determined? \_\_\_\_\_ Date: \_\_\_\_\_  
 Casing Squeeze(s): \_\_\_\_\_ to \_\_\_\_\_ w / \_\_\_\_\_ sacks of cement, \_\_\_\_\_ to \_\_\_\_\_ w / \_\_\_\_\_ sacks of cement. Date: \_\_\_\_\_  
(top) (bottom) (top) (bottom)  
 Do you have a valid Oil & Gas Lease?  Yes  No  
 Depth and Type:  Junk in Hole at \_\_\_\_\_  Tools in Hole at \_\_\_\_\_ Casing Leaks:  Yes  No Depth of casing leak(s): \_\_\_\_\_  
(depth) (depth)  
 Type Completion:  ALT. I  ALT. II Depth of:  DV Tool: \_\_\_\_\_ w / \_\_\_\_\_ sacks of cement  Port Collar: \_\_\_\_\_ w / \_\_\_\_\_ sack of cement  
(depth) (depth)  
 Packer Type: \_\_\_\_\_ Size: \_\_\_\_\_ Inch Set at: \_\_\_\_\_ Feet  
 Total Depth: \_\_\_\_\_ Plug Back Depth: \_\_\_\_\_ Plug Back Method: \_\_\_\_\_

**Geological Data:**

Formation Name	Formation Top	Formation Base	Completion Information
1. _____	At: _____	to _____ Feet	Perforation Interval _____ to _____ Feet or Open Hole Interval _____ to _____ Feet
2. _____	At: _____	to _____ Feet	Perforation Interval _____ to _____ Feet or Open Hole Interval _____ to _____ Feet

UNDER PENALTY OF PERJURY I HEREBY ATTEST THAT THE INFORMATION CONTAINED HEREIN IS TRUE AND CORRECT TO THE BEST OF MY KNOWLEDGE

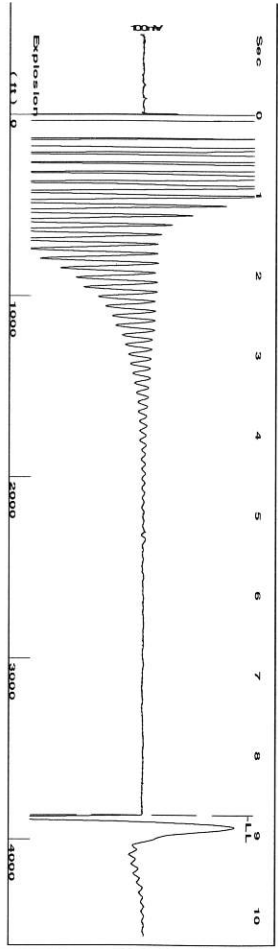
Submitted Electronically

<b>Do NOT Write in This Space - KCC USE ONLY</b>	Date Tested: _____	Results: _____	Date Plugged: _____	Date Repaired: _____	Date Put Back in Service: _____
	Review Completed by: _____ Comments: _____				
TA Approved: <input type="checkbox"/> Yes <input type="checkbox"/> Denied Date: _____					

Mail to the Appropriate KCC Conservation Office:

	KCC District Office #1 - 210 E. Frontview, Suite A, Dodge City, KS 67801	Phone 620.682.7933
	KCC District Office #2 - 3450 N. Rock Road, Building 600, Suite 601, Wichita, KS 67226	Phone 316.337.7400
	KCC District Office #3 - 137 E. 21st St., Chanute, KS 66720	Phone 620.902.6450
	KCC District Office #4 - 2301 E. 13th Street, Hays, KS 67601-2651	Phone 785.261.6250

Group: Landmark Well: Janzen #2-1 (acquired on: 04/20/19 07:48:49 )



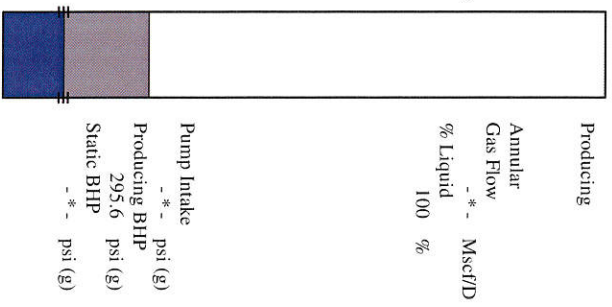
Liquid level calculated with user supplied Acoustic Velocity

Acoustic Velocity 883.866 ft/s

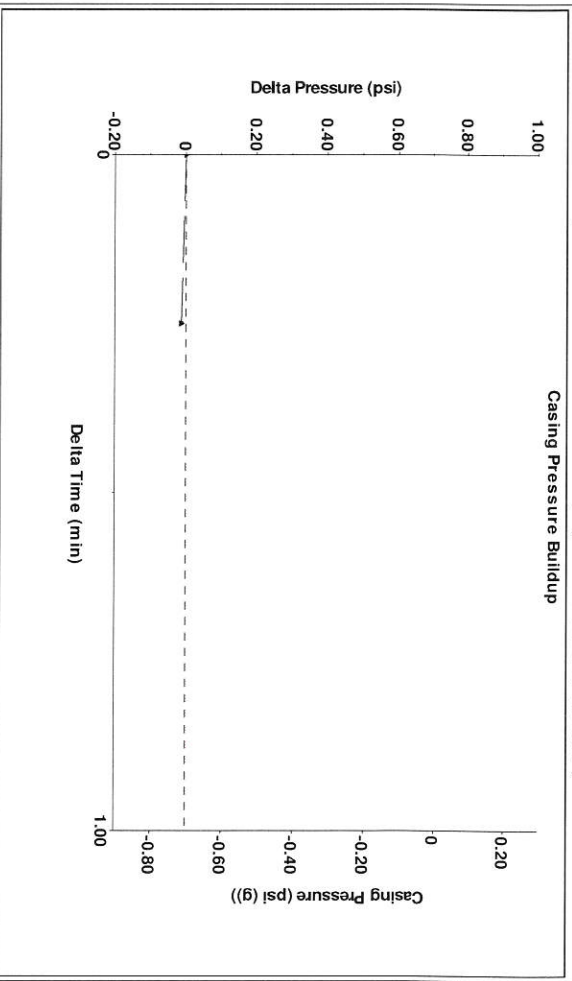
**Analysis Method: Acoustic Velocity**

Group: Landmark Well: Janzen #2-1 (acquired on: 04/20/19 07:48:49 )

Production Current	Potential	Casing Pressure	Producing
Oil 100	-* - BBL/D	-0.7 psi (g)	-* - psi (g)
Water 0	-* - BBL/D	Casing Pressure Buildup	Producing BHP
Gas 0.0	-* - Mscf/D	-0.013 psi	295.6 psi (g)
		0.25 min	Static BHP
PR Method	Vogel	Gas/Liquid Interface Pressure	-* - psi (g)
BHP/SBHP	-* -	1.4 psi (g)	
Production Efficiency	0.0		
Oil 35 deg API		Liquid Level Depth	
Water 1.3 Sp.Gr:H2O		3866.91 ft	
Gas 1.10 Sp.Gr:AIR		Pump Intake Depth	
Acoustic Velocity	883.866 ft/s	Formation Depth	
		4700.00 ft	
Formation Submergence			
Total Gaseous Liquid Column HT (TVD)			
Equivalent Gas Free Liquid HT (TVD)			
Acoustic Test			



Group: Landmark Well: Janzen #2-1 (acquired on: 04/20/19 07:48:49 )



Change in Pressure -0.01 psi PT11179  
 Change in Time 0.25 min Range  
 0 - ? psi

Group: Landmark Well: Janzen #2-1 (acquired on: 04/20/19 07:48:49 )

**Entered Acoustic Velocity for Liquid Level depth determination**

WELL BORE DIAGRAM - EXISTING

Field: Capstone East

Date: 3-7-19

**Janzen 2-1**

API: 15-171-21123

SW NE SE SW Sec 1-17S-34W

Scott Co. KS

**Present Status:** TA'd Well

Elev KB: 3112'  
GL: 3102'

**Surface Csg:**  
8 5/8" 23# LS STC @ 265' in 12 1/4" hole  
Cmt'd w/200 sx, cmt circ to surface

DV Tool @ 2425-27' (CBL)  
Cmt 2nd Stage w/400 sx, did not circ  
TOC temp survey 1050'  
Run 1" to 791' and cmt w/125 sx  
circ cmt to surface (15-20 sx to pit)

TOC 1st Stage @ 3600' (CBL)

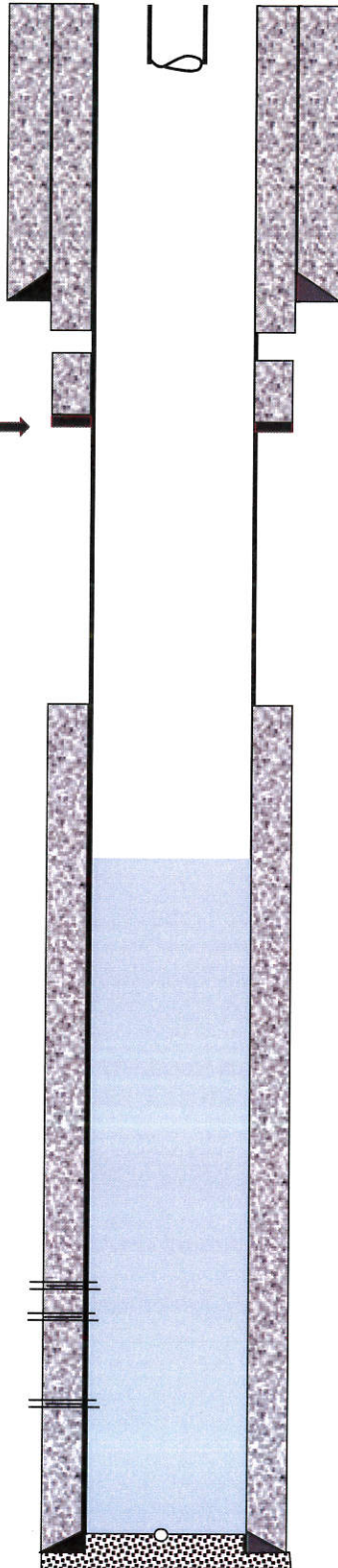
U. Altamont Pfs: 4463-69' (4 SPF)  
L. Altamont Pfs: 4499-4503' (4 SPF)

Johnson Zn Pfs: 4692-4700' (2 SPF)

**LS Prod Csg:** 5 1/2" 15.5# J-55 @ 4834'  
Cmt 1st Stage w/150 sxs

PBTD: 4790' PBTD (5 1/2" Baffle)  
4783' PBTD (CBL)

TD: 4840'



1 jt 2 3/8" cork-screwed tubing

Fluid Level = 3867' (4-20-19)

July 29, 2019

Jeff Wood  
Landmark Resources, Inc.  
4900 WOODWAY DR SUITE 880  
HOUSTON, TX 77056-1881

Re: Temporary Abandonment  
API 15-171-21123-00-00  
JANZEN 2-1  
SW/4 Sec.01-17S-34W  
Scott County, Kansas

Dear Jeff Wood :

"Your temporary abandonment (TA) application for the well listed above has been approved. In accordance with K.A.R. 82-3-111 the TA status of this well will expire 07/29/2020.

- \* If you return this well to service or plug it, please notify the District Office.
- \* If you sell this well you are required to file a Transfer of Operator form, T-1.
- \* If the well will remain temporarily abandoned, you must submit a new TA application, CP-111, before 07/29/2020.

You may contact me at the number above if you have questions.

Very truly yours,

Michael Maier"