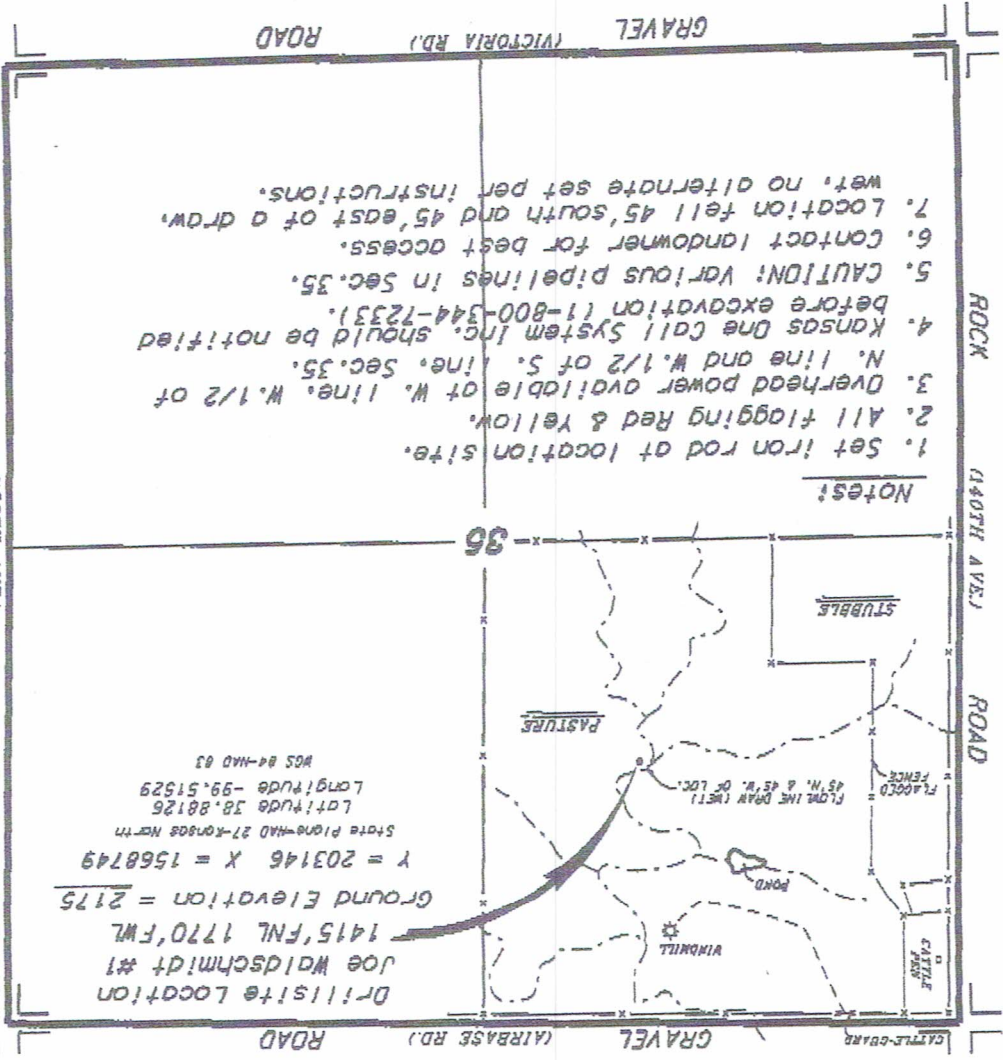
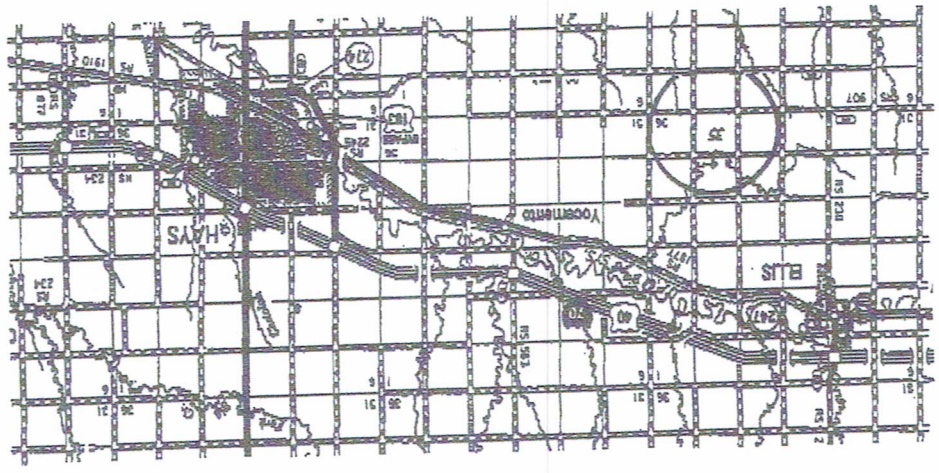


DOUBLE D.S. LLC
 JOE WALDSCHMIDT LEASE
 NW 1/4, SECTION 35, T13S, R20W
 ELLIS COUNTY, KANSAS



*Egress and ingress to location as shown on this plot is for usage only and may not be legally opened for public use. Contact landowner, tenant and county road department for access.



*Controlling data is based upon the best maps and photographs available to us and upon a regular section of land containing 800 acres.

Drifting in the state of Kansas, the section corners, which are (or were) in the precise section lines, are not necessarily located at the quarter section corners. The location of the section corners is determined using the normal standard of care of oilfield surveyors.

Drifting in the state of Kansas, the section corners, which are (or were) in the precise section lines, are not necessarily located at the quarter section corners. The location of the section corners is determined using the normal standard of care of oilfield surveyors.

