



Fall & Associates

Stake and Elevation Service

P.O. Box 222

Pretty Prairie, KS. 67570

785-243-7506

Date 6-28-19

Invoice Number 0627191

MURFIN DRILLING

Operator

1-19

Number

Laing

Farm Name

Cheyenne-KS

County-State

19

S

2s

T

38w

R

330' FSL 990'FWL

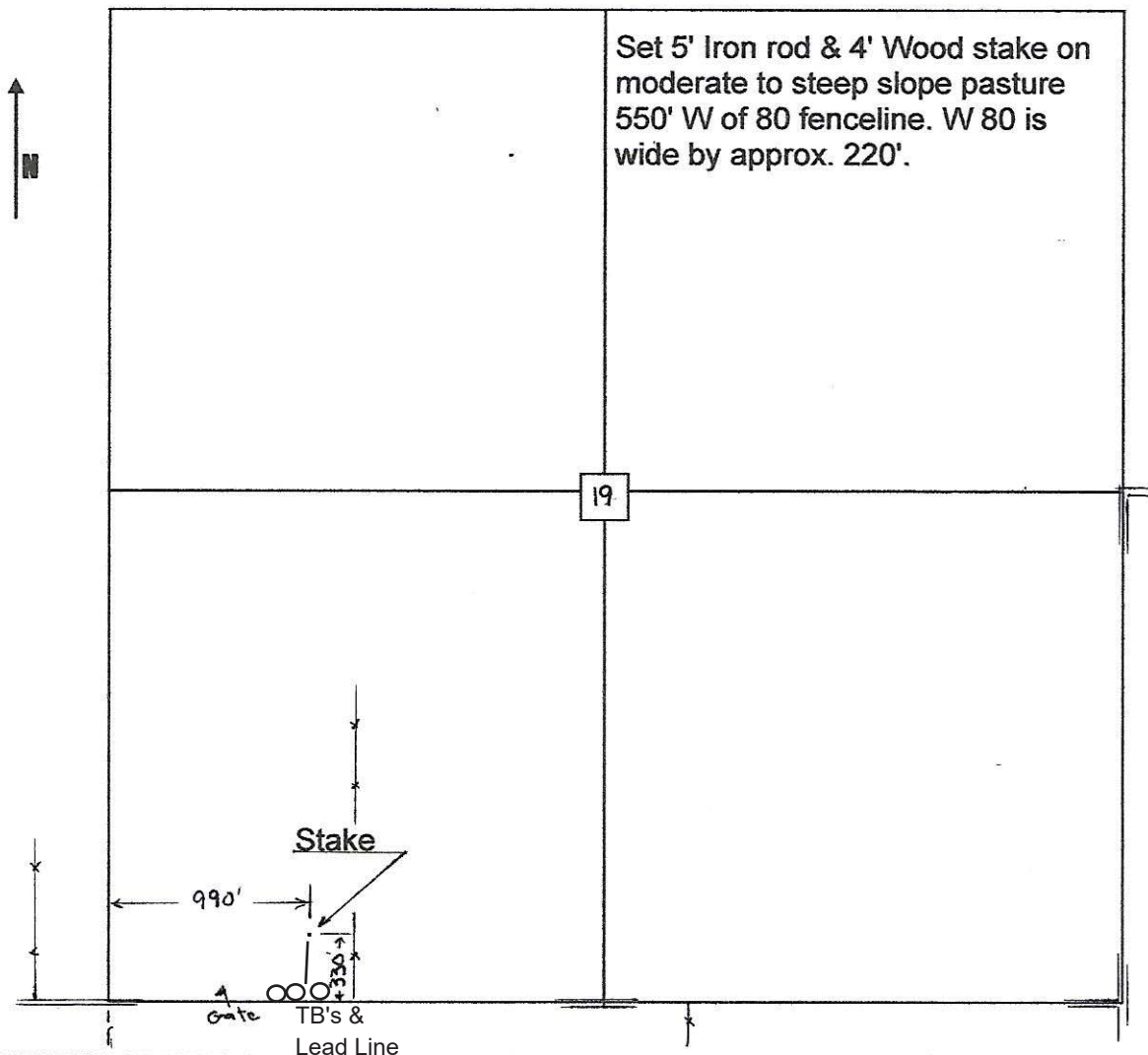
Location

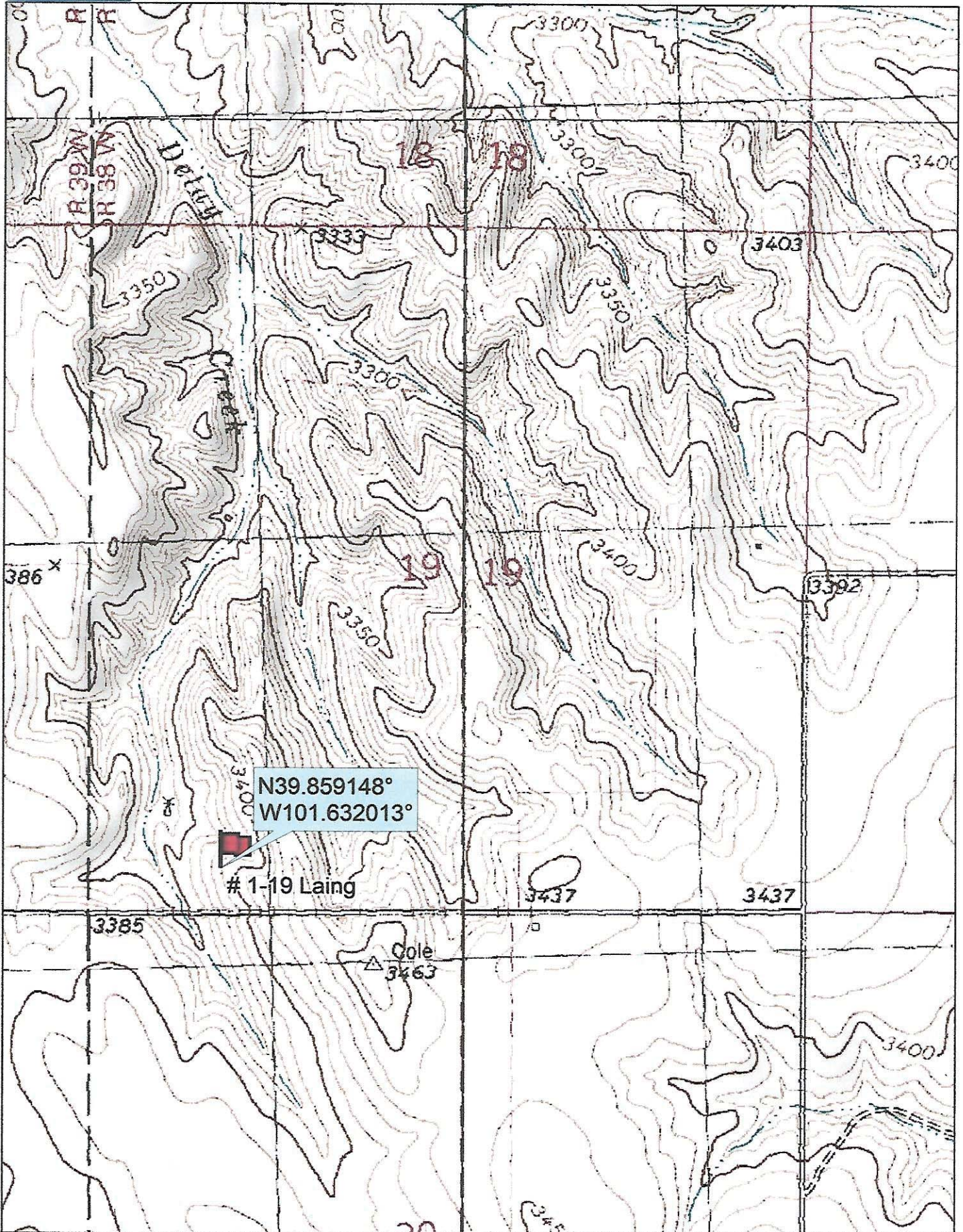
Murfin Drilling
250 N Water
Suite 300
Wichita, Ks. 67202

Elevation 3386 Gr.

Ordered By: Shauna

Scale 1"=1000'





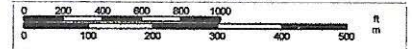
Data use subject to license.

© DeLorme. Topo North America™ 9.

www.delorme.com



Scale 1 : 12,000



1" = 1,000.0 ft Data Zoom 13-1