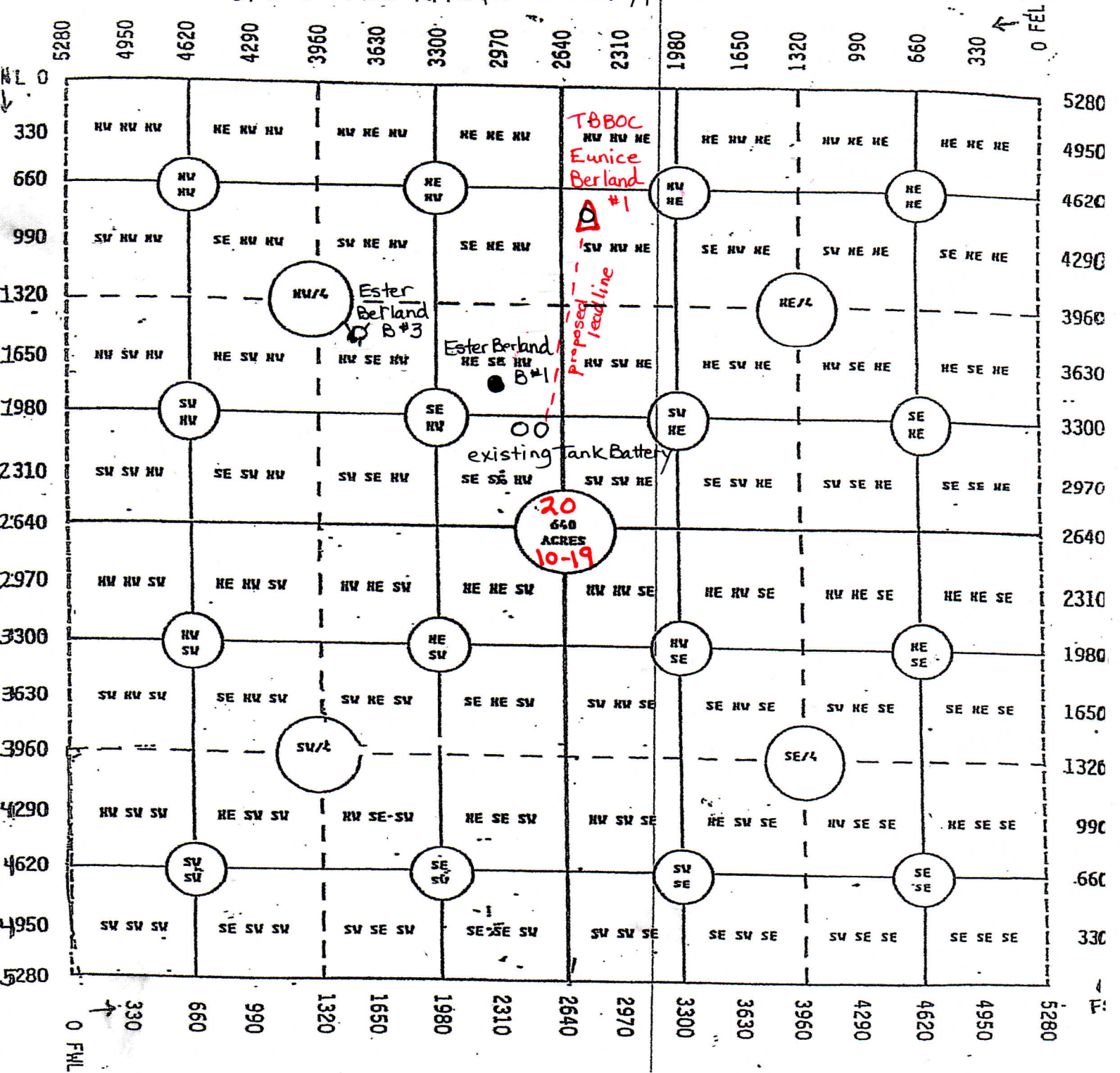


The Bill Bowman Oil Company  
 Eunice Berland #1 NWSW NW NE  
 of S 20-T10S-R19W, Rooks County, Kansas



If production pipe is set on Eunice Berland #1  
 then a lead line will be laid to existing Tank Battery  
 for the Ester Berland B lease (NW/4 of S20-T10S-R19W)