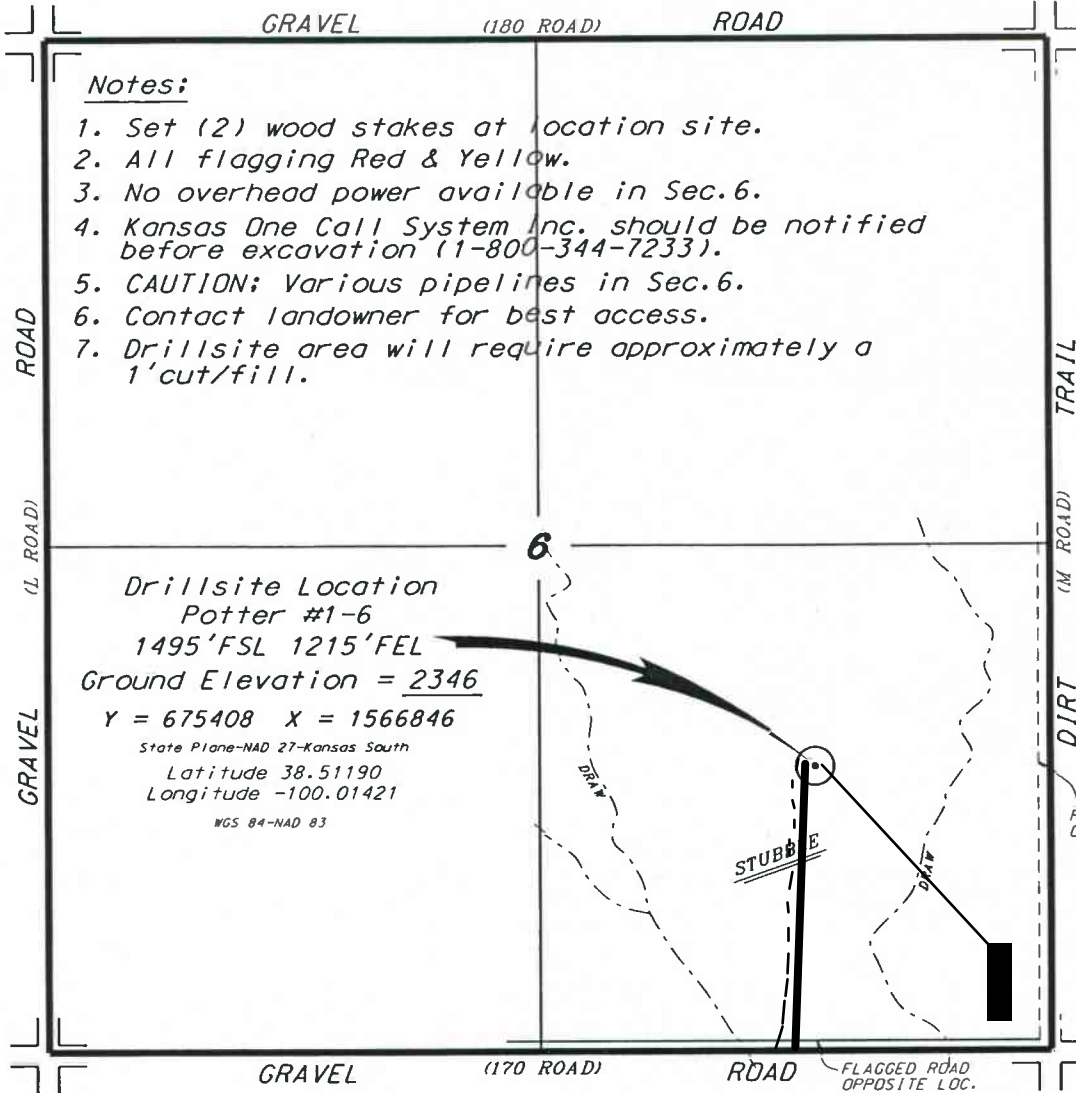


L.D. DRILLING, INC.
POTTER LEASE
SE.1/4, SECTION 6, T18S, R24W
NESS COUNTY, KANSAS

Directions:

From the intersection of Highway 96 and Highway 283 (in Ness City, Kansas) go 6.6 miles West on Highway 96, then go 4.0 miles North to the SW. corner of Section 6, then go 0.75 miles East to a flag on the north edge of road, then go 0.28 miles North to location.

* Ingress and egress to location as shown on this plat is per usage only and may not be legally opened for public use. Contact landowner, tenant and county road department for access.

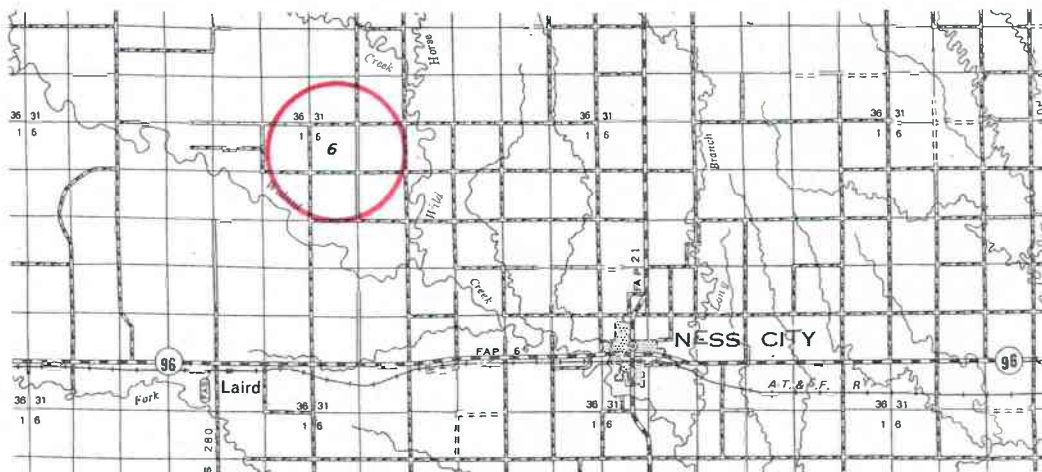


Notes:

1. Set (2) wood stakes at location site.
2. All flagging Red & Yellow.
3. No overhead power available in Sec.6.
4. Kansas One Call System Inc. should be notified before excavation (1-800-344-7233).
5. CAUTION; Various pipelines in Sec.6.
6. Contact landowner for best access.
7. Drillsite area will require approximately a 1'cut/fill.

Drillsite Location
Potter #1-6
1495'FSL 1215'FEL
Ground Elevation = 2346
Y = 675408 X = 1566846

State Plane-NAD 27-Kansas South
 Latitude 38.51190
 Longitude -100.01421
 WGS 84-NAD 83



- Controlling data is based upon the best maps and photographs available to us and upon a regular section of land containing 640 acres.
- Approximate section lines were determined using the normal standard of care of oilfield surveyors practicing in the state of Kansas. The section corners, which establish the precise section lines, were not necessarily located, and the exact location of the drillsite location in the section is not guaranteed. Therefore, the operator securing this service and accepting this plat and all other parties relying thereon agree to hold Central Kansas Oilfield Services, Inc., its officers and employees harmless from all losses, costs and expenses and said entities released from any liability from incidental or consequential damages.
- Elevations derived from National Geodetic Vertical Datum.

Date July 16, 2019